



SOUTHEAST GAP ANALYSIS PROJECT



Species Modeling Report

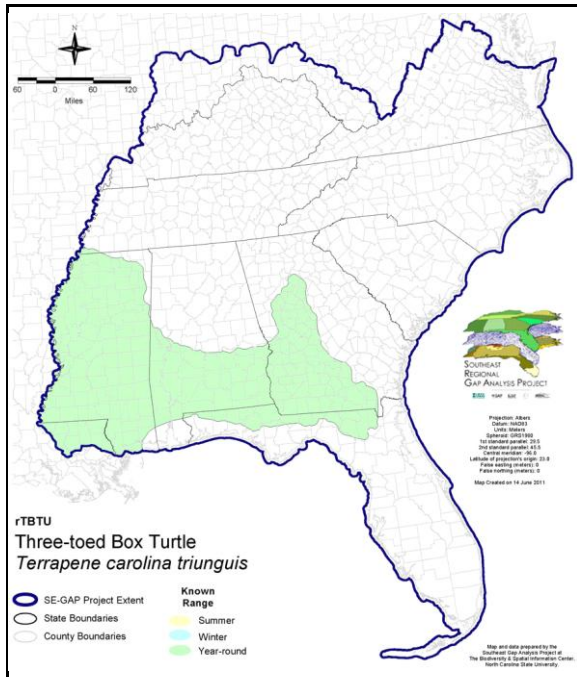
Three-toed Box Turtle

Terrapene carolina triunguis

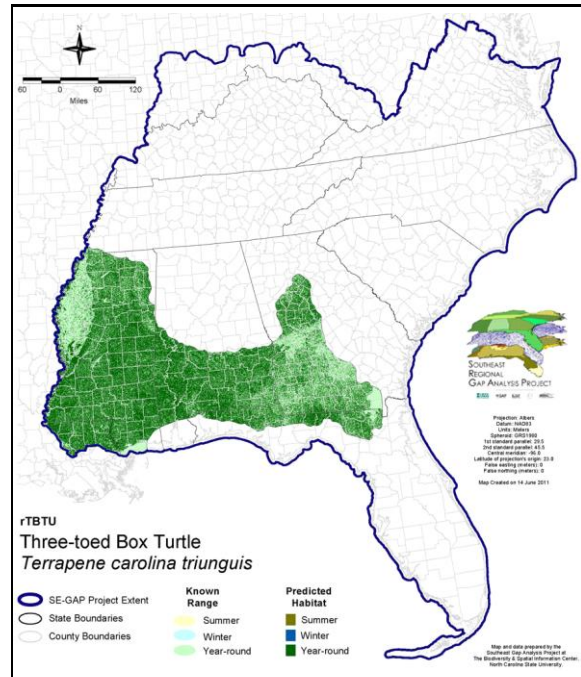
Taxa: Reptilian
 Order: Cryptodeira
 Family: Emydidae

SE-GAP Spp Code: **rTBTU**
 ITIS Species Code: 208600
 NatureServe Element Code: ARAAD08014

KNOWN RANGE:



PREDICTED HABITAT:



Range Map Link: http://www.basic.ncsu.edu/segap/datazip/maps/SE_Range_rTBTU.pdf

Predicted Habitat Map Link: http://www.basic.ncsu.edu/segap/datazip/maps/SE_Dist_rTBTU.pdf

GAP Online Tool Link: <http://www.gapservice.ncsu.edu/segap/segap/index2.php?species=rTBTU>

Data Download: http://www.basic.ncsu.edu/segap/datazip/region/vert/rTBTU_se00.zip

PROTECTION STATUS:

Reported on March 14, 2011

Federal Status: ---

State Status: ---

NS Global Rank: G5T5

NS State Rank: AR (S4), FL (SNR), MO (S5)

SUMMARY OF PREDICTED HABITAT BY MANAGMENT AND GAP PROTECTION STATUS:

	US FWS		US Forest Service		Tenn. Valley Author.		US DOD/ACOE	
	ha	%	ha	%	ha	%	ha	%
Status 1	19,904.5	< 1	527.0	< 1	0.0	0	0.0	0
Status 2	55,780.7	< 1	23,890.3	< 1	0.0	0	786.1	< 1
Status 3	4.0	< 1	485,154.0	3	0.0	0	72,289.1	< 1
Status 4	14.6	< 1	0.0	0	0.0	0	0.0	0
Total	75,703.7	< 1	509,571.4	3	0.0	0	73,075.1	< 1
	US Dept. of Energy		US Nat. Park Service		NOAA		Other Federal Lands	
	ha	%	ha	%	ha	%	ha	%
Status 1	0.0	0	0.0	0	0.0	0	0.0	0
Status 2	0.0	0	1.1	< 1	0.0	0	0.0	0
Status 3	0.0	0	11,593.6	< 1	0.0	0	4,280.9	< 1
Status 4	0.0	0	0.0	0	0.0	0	0.0	0
Total	0.0	0	11,594.7	< 1	0.0	0	4,280.9	< 1
	Native Am. Reserv.		State Park/Hist. Park		State WMA/Gameland		State Forest	
	ha	%	ha	%	ha	%	ha	%
Status 1	0.0	0	284.3	< 1	0.0	0	0.0	0
Status 2	0.0	0	403.5	< 1	83,808.3	< 1	0.0	0
Status 3	8,061.0	< 1	55,386.4	< 1	51,332.9	< 1	68,136.4	< 1
Status 4	0.0	0	0.0	0	30,337.6	< 1	45.5	< 1
Total	8,061.0	< 1	56,074.1	< 1	165,478.7	< 1	68,181.8	< 1
	State Coastal Reserve		ST Nat.Area/Preserve		Other State Lands		Private Cons. Easemt.	
	ha	%	ha	%	ha	%	ha	%
Status 1	0.0	0	704.3	< 1	0.0	0	0.0	0
Status 2	2,262.9	< 1	1,352.5	< 1	0.0	0	355.2	< 1
Status 3	0.0	0	3,504.7	< 1	2,300.0	< 1	23,010.7	< 1
Status 4	0.0	0	0.0	0	455.9	< 1	0.0	0
Total	2,262.9	< 1	5,561.6	< 1	2,756.0	< 1	23,365.9	< 1
	Private Land - No Res.		Water		Overall Total			
	ha	%	ha	%	ha	%		
Status 1	0.0	0	0.0	0	21,420.2	< 1		
Status 2	0.0	0	0.0	0	168,640.5	1		
Status 3	407.4	< 1	0.0	0	785,461.1	8		
Status 4	15,175,903.2	91	22,568.3	< 1	15,259,648.1	91		
Total	15,176,310.7	91	22,568.3	< 1	16,235,169.8	100		

GAP Status 1: An area having permanent protection from conversion of natural land cover and a mandated management plan in operation to maintain a natural state within which disturbance events (of natural type, frequency, and intensity) are allowed to proceed without interference or are mimicked through management.

GAP Status 2: An area having permanent protection from conversion of natural land cover and a mandated management plan in operation to maintain a primarily natural state, but which may receive use or management practices that degrade the quality of existing natural communities.

GAP Status 3: An area having permanent protection from conversion of natural land cover for the majority of the area, but subject to extractive uses of either a broad, low-intensity type or localized intense type. It also confers protection to federally listed endangered and threatened species throughout the area.

GAP Status 4: Lack of irrevocable easement or mandate to prevent conversion of natural habitat types to anthropogenic habitat types. Allows for intensive use throughout the tract. Also includes those tracts for which the existence of such restrictions or sufficient information to establish a higher status is unknown.

PREDICTED HABITAT MODEL(S):

Year-round Model:

Habitat Description: Eastern box turtle is predominately a species of open woodlands, fields, pastures, forest-field edges and also marshy meadows (Ernst et al. 1994, NatureServe 2005). In general, most all box turtles 'show little habitat specificity, but are generally most abundant in moist, woodland habitats, usually with and open canopy' (Mount 1975, Wilson 1995). Amy Silvano 8jul05

Subspecies T.C. triunguis - Habitat not known to differ from those of T.C. carolina (Mount 1975).

Ecosystem Classifiers: Habitat is primarily, moist but will nest in uplands so used Wetlands, swamps and Forested Bottomlands as well as bare soil for burrowing as PMU's and Forested Classes as AMU's. Amy Silvano 8jul05

Selected Map Units:

Functional Group	Map Unit Name
Anthropogenic	Bare Sand
Anthropogenic	Bare Soil
Anthropogenic	Developed Open Space
Anthropogenic	Pasture/Hay
Anthropogenic	Successional Grassland/Herbaceous
Anthropogenic	Successional Grassland/Herbaceous (Other)
Anthropogenic	Successional Grassland/Herbaceous (Utility Swath)
Forest/Woodland	Alabama Ketona Glade and Woodland
Forest/Woodland	Central Appalachian Oak and Pine Forest
Forest/Woodland	East Gulf Coastal Plain Black Belt Calcareous Prairie and Woodland - Woodland Modifier
Forest/Woodland	East Gulf Coastal Plain Interior Shortleaf Pine-Oak Forest - Hardwood Modifier
Forest/Woodland	East Gulf Coastal Plain Interior Shortleaf Pine-Oak Forest - Mixed Modifier
Forest/Woodland	East Gulf Coastal Plain Interior Shortleaf Pine-Oak Forest - Pine Modifier
Forest/Woodland	East Gulf Coastal Plain Interior Upland Longleaf Pine Woodland - Loblolly Modifier
Forest/Woodland	East Gulf Coastal Plain Interior Upland Longleaf Pine Woodland - Offsite Hardwood Modifier
Forest/Woodland	East Gulf Coastal Plain Interior Upland Longleaf Pine Woodland - Open Understory Modifier
Forest/Woodland	East Gulf Coastal Plain Interior Upland Longleaf Pine Woodland - Scrub/Shrub Modifier
Forest/Woodland	East Gulf Coastal Plain Limestone Forest
Forest/Woodland	East Gulf Coastal Plain Northern Dry Upland Hardwood Forest
Forest/Woodland	East Gulf Coastal Plain Northern Loess Bluff Forest
Forest/Woodland	East Gulf Coastal Plain Northern Loess Plain Oak-Hickory Upland - Hardwood Modifier
Forest/Woodland	East Gulf Coastal Plain Northern Loess Plain Oak-Hickory Upland - Juniper Modifier
Forest/Woodland	East Gulf Coastal Plain Northern Mesic Hardwood Forest
Forest/Woodland	East Gulf Coastal Plain Southern Loess Bluff Forest
Forest/Woodland	East Gulf Coastal Plain Southern Mesic Slope Forest
Forest/Woodland	Florida Longleaf Pine Sandhill - Open Understory Modifier
Forest/Woodland	Florida Longleaf Pine Sandhill - Scrub/Shrub Understory Modifier
Forest/Woodland	Northern Atlantic Coastal Plain Dry Hardwood Forest
Forest/Woodland	Southeastern Interior Longleaf Pine Woodland
Forest/Woodland	Southern Coastal Plain Dry Upland Hardwood Forest
Forest/Woodland	Southern Coastal Plain Oak Dome and Hammock
Forest/Woodland	Southern Piedmont Dry Oak-(Pine) Forest - Hardwood Modifier
Forest/Woodland	Southern Piedmont Dry Oak-(Pine) Forest - Loblolly Pine Modifier
Forest/Woodland	Southern Piedmont Dry Oak-(Pine) Forest - Mixed Modifier
Forest/Woodland	Southern Piedmont Dry Oak-Heath Forest - Hardwood Modifier
Forest/Woodland	Southern Piedmont Dry Oak-Heath Forest - Mixed Modifier
Forest/Woodland	Southern Piedmont Dry Oak-Heath Forest - Virginia/Pitch Pine Modifier
Forest/Woodland	Southern Piedmont Glade and Barrens
Forest/Woodland	Southern Piedmont Mafic Hardpan Woodland
Forest/Woodland	Southern Piedmont Mesic Forest

Forest/Woodland	Southern Piedmont Northern Triassic Basin Dry Forest
Prairie	East Gulf Coastal Plain Black Belt Calcareous Prairie and Woodland
Prairie	East Gulf Coastal Plain Black Belt Calcareous Prairie and Woodland - Herbaceous Modifier
Prairie	East Gulf Coastal Plain Jackson Plain Prairie and Barrens
Prairie	East Gulf Coastal Plain Jackson Prairie and Woodland
Prairie	Panhandle Florida Limestone Glade
Wetlands	Central Florida Herbaceous Seep
Wetlands	East Gulf Coastal Plain Interior Shrub Bog
Wetlands	East Gulf Coastal Plain Jackson Plain Dry Flatwoods - Open Understory Modifier
Wetlands	East Gulf Coastal Plain Jackson Plain Dry Flatwoods - Scrub/Shrub Understory Modifier
Wetlands	East Gulf Coastal Plain Large River Floodplain Forest - Forest Modifier
Wetlands	East Gulf Coastal Plain Large River Floodplain Forest - Herbaceous Modifier
Wetlands	East Gulf Coastal Plain Near-Coast Pine Flatwoods - Offsite Hardwood Modifier
Wetlands	East Gulf Coastal Plain Near-Coast Pine Flatwoods - Open Understory Modifier
Wetlands	East Gulf Coastal Plain Near-Coast Pine Flatwoods - Scrub/Shrub Understory Modifier
Wetlands	East Gulf Coastal Plain Northern Depression Pondshore
Wetlands	East Gulf Coastal Plain Northern Seepage Swamp
Wetlands	East Gulf Coastal Plain Small Stream and River Floodplain Forest
Wetlands	East Gulf Coastal Plain Southern Depression Pondshore
Wetlands	East Gulf Coastal Plain Southern Loblolly-Hardwood Flatwoods
Wetlands	East Gulf Coastal Plain Treeless Savanna and Wet Prairie
Wetlands	Floridian Highlands Freshwater Marsh
Wetlands	Lower Mississippi River Bottomland and Floodplain Forest
Wetlands	Lower Mississippi River Bottomland Depressions - Forest Modifier
Wetlands	Lower Mississippi River Bottomland Depressions - Herbaceous Modifier
Wetlands	Mississippi River Low Floodplain (Bottomland) Forest
Wetlands	Mississippi River Riparian Forest
Wetlands	Southern Coastal Plain Blackwater River Floodplain Forest
Wetlands	Southern Coastal Plain Herbaceous Seepage Bog
Wetlands	Southern Coastal Plain Hydric Hammock
Wetlands	Southern Coastal Plain Nonriverine Basin Swamp
Wetlands	Southern Coastal Plain Nonriverine Cypress Dome
Wetlands	Southern Coastal Plain Seepage Swamp and Baygall
Wetlands	Southern Coastal Plain Spring-run Stream Aquatic Vegetation
Wetlands	Southern Piedmont Large Floodplain Forest - Forest Modifier
Wetlands	Southern Piedmont Large Floodplain Forest - Herbaceous Modifier
Wetlands	Southern Piedmont Seepage Wetland
Wetlands	Southern Piedmont Small Floodplain and Riparian Forest
Wetlands	Southern Piedmont/Ridge and Valley Upland Depression Swamp
Wetlands	Unconsolidated Shore (Lake/River/Pond)

CITATIONS: Dodd, C.K. 2001. North American Box Turtles: A Natural History. University of Oklahoma Press, Norman, OK. 231p.

Ernst, C. H., R. W. Barbour, and J. E. Lovich. 1994. Turtles of the United States and Canada. Smithsonian Institution Press, Washington, D.C. xxxviii + 578 pp.

Mount, R. H. 1975. The Reptiles and Amphibians of Alabama. Auburn University Agricultural Experiment Station, Auburn, Alabama. vii + 347 pp.

Stickel, L. F. 1989. Home range behavior among box turtles (*TERRAPENE C. CAROLINA*) of a bottomland forest in Maryland. *J. Herpetol.* 23:40-44.

For more information:: SE-GAP Analysis Project / BaSIC
127 David Clark Labs
Dept. of Biology, NCSU
Raleigh, NC 27695-7617
(919) 513-2853
www.basic.ncsu.edu/segap

Compiled: 15 September 2011

This data was compiled and/or developed by the Southeast GAP Analysis Project at The Biodiversity and Spatial Information Center, North Carolina State University.