



SOUTHEAST GAP ANALYSIS PROJECT



Species Modeling Report

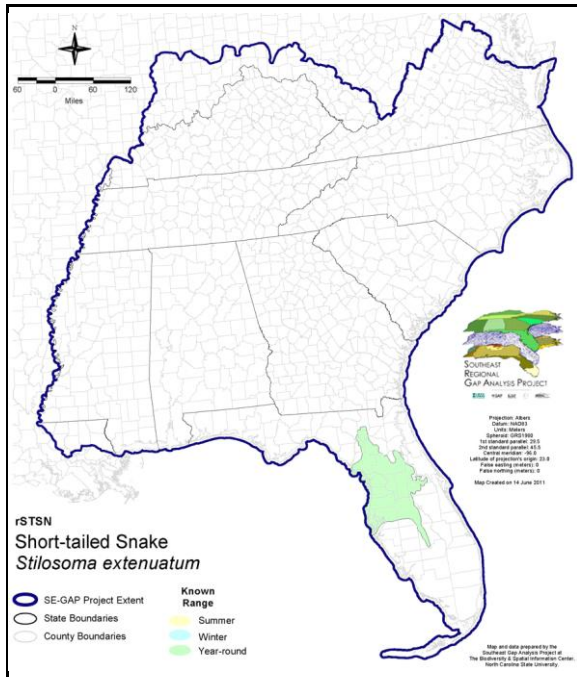
Short-tailed Snake

Stilosoma extenuatum

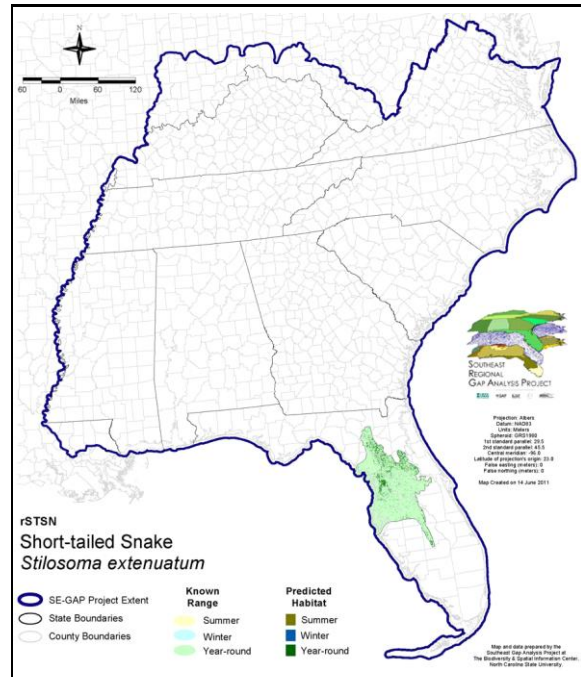
Taxa: Reptilian
 Order: Squamata
 Family: Colubridae

SE-GAP Spp Code: **rSTSN**
 ITIS Species Code: 174277
 NatureServe Element Code: ARADB33010

KNOWN RANGE:



PREDICTED HABITAT:



Range Map Link: http://www.basic.ncsu.edu/segap/datazip/maps/SE_Range_rSTSN.pdf

Predicted Habitat Map Link: http://www.basic.ncsu.edu/segap/datazip/maps/SE_Dist_rSTSN.pdf

GAP Online Tool Link: <http://www.gapservice.ncsu.edu/segap/segap/index2.php?species=rSTSN>

Data Download: http://www.basic.ncsu.edu/segap/datazip/region/vert/rSTSN_se00.zip

PROTECTION STATUS:

Reported on March 14, 2011

Federal Status: ---
 State Status: FL (ST)
 NS Global Rank: G3
 NS State Rank: FL (S3)

SUMMARY OF PREDICTED HABITAT BY MANAGMENT AND GAP PROTECTION STATUS:

	US FWS		US Forest Service		Tenn. Valley Author.		US DOD/ACOE	
	ha	%	ha	%	ha	%	ha	%
Status 1	86.9	< 1	0.0	0	0.0	0	0.0	0
Status 2	137.6	< 1	2,949.2	1	0.0	0	0.0	0
Status 3	0.0	0	36,560.7	12	0.0	0	31.8	< 1
Status 4	0.0	0	0.0	0	0.0	0	0.0	0
Total	224.6	< 1	39,509.9	13	0.0	0	31.8	< 1
	US Dept. of Energy		US Nat. Park Service		NOAA		Other Federal Lands	
	ha	%	ha	%	ha	%	ha	%
Status 1	0.0	0	0.0	0	0.0	0	0.0	0
Status 2	0.0	0	0.0	0	0.0	0	0.0	0
Status 3	0.0	0	0.0	0	0.0	0	0.0	0
Status 4	0.0	0	0.0	0	0.0	0	0.0	0
Total	0.0	0	0.0	0	0.0	0	0.0	0
	Native Am. Reserv.		State Park/Hist. Park		State WMA/Gameland		State Forest	
	ha	%	ha	%	ha	%	ha	%
Status 1	0.0	0	0.0	0	0.0	0	0.0	0
Status 2	0.0	0	0.0	0	3,600.3	1	0.0	0
Status 3	0.0	0	13,349.9	5	0.0	0	22,490.9	8
Status 4	0.0	0	0.0	0	0.0	0	0.0	0
Total	0.0	0	13,349.9	5	3,600.3	1	22,490.9	8
	State Coastal Reserve		ST Nat.Area/Preserve		Other State Lands		Private Cons. Easemt.	
	ha	%	ha	%	ha	%	ha	%
Status 1	0.0	0	0.0	0	0.0	0	0.0	0
Status 2	0.0	0	260.6	< 1	0.0	0	0.0	0
Status 3	0.0	0	194.1	< 1	105.1	< 1	1,189.0	< 1
Status 4	0.0	0	0.0	0	0.0	0	0.0	0
Total	0.0	0	454.8	< 1	105.1	< 1	1,189.0	< 1
	Private Land - No Res.		Water		Overall Total			
	ha	%	ha	%	ha	%		
Status 1	0.0	0	0.0	0	86.9	< 1		
Status 2	0.0	0	0.0	0	6,947.7	2		
Status 3	0.0	0	0.0	0	73,921.5	38		
Status 4	176,498.6	60	365.0	< 1	176,863.5	60		
Total	176,498.6	60	365.0	< 1	257,819.7	100		

GAP Status 1: An area having permanent protection from conversion of natural land cover and a mandated management plan in operation to maintain a natural state within which disturbance events (of natural type, frequency, and intensity) are allowed to proceed without interference or are mimicked through management.

GAP Status 2: An area having permanent protection from conversion of natural land cover and a mandated management plan in operation to maintain a primarily natural state, but which may receive use or management practices that degrade the quality of existing natural communities.

GAP Status 3: An area having permanent protection from conversion of natural land cover for the majority of the area, but subject to extractive uses of either a broad, low-intensity type or localized intense type. It also confers protection to federally listed endangered and threatened species throughout the area.

GAP Status 4: Lack of irrevocable easement or mandate to prevent conversion of natural habitat types to anthropogenic habitat types. Allows for intensive use throughout the tract. Also includes those tracts for which the existence of such restrictions or sufficient information to establish a higher status is unknown.

PREDICTED HABITAT MODEL(S):

Year-round Model:

Habitat Description: Mostly restricted to longleaf pine/turkey oak associations. Sometimes in upland hammock, sand pine scrub adjacent to longleaf-turkey oak. May select for Norfolk, Blanton fine, and St. Lucie soils. Well drained soils (Campbell 1992). # Longleaf pine/turkey oak, xeric oak hammocks, and sandy soils of upland ridges (Ashton 1988). # High pine, upland hammock, and rosemary scrub (Carr 1940). # Fossorial, xeric adapted. Sandy soils longleaf pine/turkey oak, xeric oak hammocks. More abundant in early successional pine scrub than full canopied scrub (Ernst and Barbour 1989). # Longleaf pine/turkey oak ridges, rosemary/sand pine scrub, and upland hammock (Carr and Goin 1955). # Dry hardwood hammocks in Hernando, Lake, Orange, and Marion counties (Van Duyn 1939).

From NatureServe 2005: 'Dry sandy uplands, especially longleaf pine-turkey oak (sandhill) and sometimes adjacent xeric oak hammocks and rosemary-sand pine scrub. Has been found also in sphagnum bog adjacent to typical habitat. Fossorial; sometimes found under objects or in leaf litter in fall (Ashton and Ashton 1981, Carr and Goin 1955, Campbell and Moler 1992).'

Ecosystem Classifiers: Evergreen & Maritime Forests, Domes/Hammocks, bare sand, and bogs. ****Soils layer would be useful in predicting the distribution of this species. Amy Silvano 25Aug05

Customized Model: ****No FROM buffer for AMUs; just select bog habitat when adjacent to PMUs. Soils layer would be useful in predicting the distribution of this species. Amy Silvano 25Aug05.

The bog AMUs need to be selected when adjacent to PMUs. This needs to be a regiongrouping/zonal process that must be hand modeled. Previously there was no buffer distance set for AMUs. I changed it to 0 meters which would essentially not select any AMUs. Hand modeled this species instead. MJR 24 October2007.

Selected Map Units:

Functional Group	Map Unit Name
Anthropogenic	Bare Sand
Forest/Woodland	East Gulf Coastal Plain Interior Upland Longleaf Pine Woodland - Open Understory Modifier
Forest/Woodland	East Gulf Coastal Plain Interior Upland Longleaf Pine Woodland - Scrub/Shrub Modifier
Forest/Woodland	East Gulf Coastal Plain Maritime Forest
Forest/Woodland	Florida Longleaf Pine Sandhill - Open Understory Modifier
Forest/Woodland	Florida Longleaf Pine Sandhill - Scrub/Shrub Understory Modifier
Forest/Woodland	Florida Peninsula Inland Scrub
Forest/Woodland	Southeast Florida Coastal Strand and Maritime Hammock
Forest/Woodland	Southern Coastal Plain Oak Dome and Hammock
Forest/Woodland	Southwest Florida Coastal Strand and Maritime Hammock

Functional Group	Map Unit Name
Wetlands	Southern Coastal Plain Herbaceous Seepage Bog
Wetlands	East Gulf Coastal Plain Interior Shrub Bog
Wetlands	Central Florida Herbaceous Seep

CITATIONS:

For more information:: SE-GAP Analysis Project / BaSIC
 127 David Clark Labs
 Dept. of Biology, NCSU
 Raleigh, NC 27695-7617
 (919) 513-2853
www.basic.ncsu.edu/segap

Compiled: 15 September 2011

This data was compiled and/or developed by the Southeast GAP Analysis Project at The Biodiversity and Spatial Information Center, North Carolina State University.