



# SOUTHEAST GAP ANALYSIS PROJECT



## Species Modeling Report

### Slider

#### *Trachemys scripta*

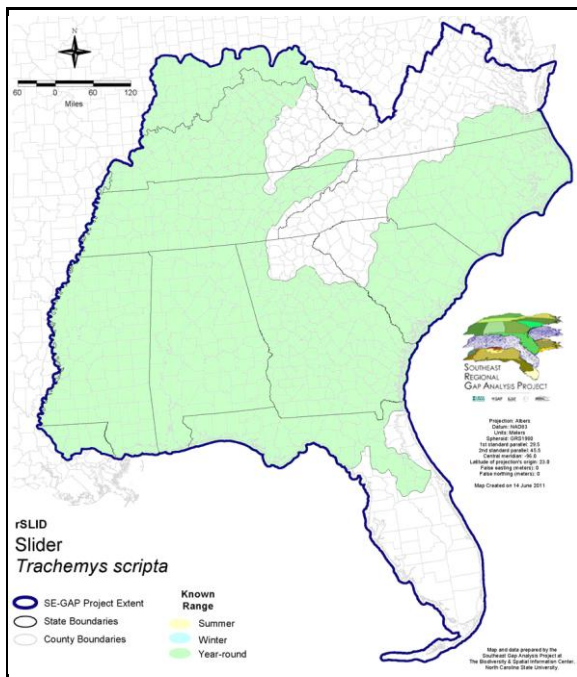
Taxa: Reptilian  
 Order: Cryptodeira  
 Family: Emydidae

SE-GAP Spp Code: **rSLID**

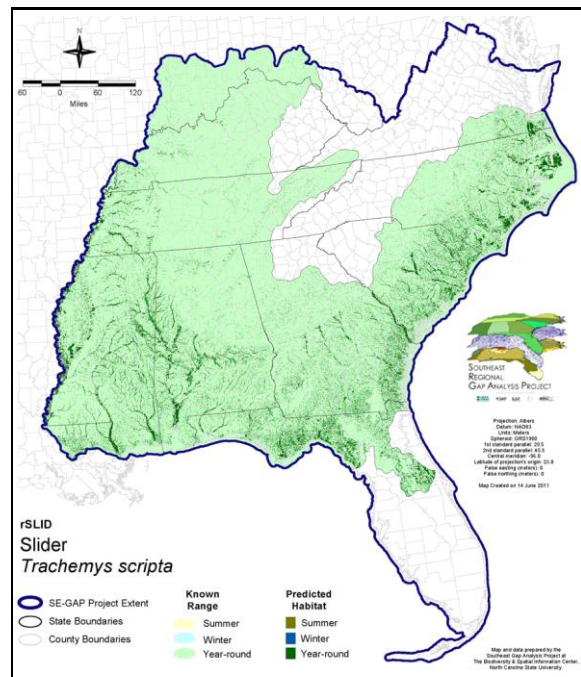
ITIS Species Code: 173819

NatureServe Element Code: ARAAD09010

### KNOWN RANGE:



### PREDICTED HABITAT:



Range Map Link: [http://www.basic.ncsu.edu/segap/datazip/maps/SE\\_Range\\_rSLID.pdf](http://www.basic.ncsu.edu/segap/datazip/maps/SE_Range_rSLID.pdf)

Predicted Habitat Map Link: [http://www.basic.ncsu.edu/segap/datazip/maps/SE\\_Dist\\_rSLID.pdf](http://www.basic.ncsu.edu/segap/datazip/maps/SE_Dist_rSLID.pdf)

GAP Online Tool Link: <http://www.gapservice.ncsu.edu/segap/segap/index2.php?species=rSLID>

Data Download: [http://www.basic.ncsu.edu/segap/datazip/region/vert/rSLID\\_se00.zip](http://www.basic.ncsu.edu/segap/datazip/region/vert/rSLID_se00.zip)

### PROTECTION STATUS:

Reported on March 14, 2011

Federal Status: ---

State Status: KY (N), NE (NC), NJ (I), NY (U), BC (7 (2005)), QC (Non suivie)

NS Global Rank: G5

NS State Rank: AL (S5), AR (S5), AZ (SNA), DC (SNR), DE (SNA), FL (S5), GA (S5), IA (S3), IL (S5), IN (SNR), KS (S5), KY (S5), LA (S5), MA (SNA), MD (S5), MI (SNA), MO (SNR), MS (S5), MT (SNA), NC (S5), NE (SNA), NJ (SNR), NM (S4), NV (SNA), NY (SNA), OH (SNR), OK (S5), PA (SNA), SC (SNR), TN (S5), TX (S5), VA (S4), WA (SNA), WV (S1), BC (SNA), ON (SNA), QC (SNA)

**SUMMARY OF PREDICTED HABITAT BY MANAGMENT AND GAP PROTECTION STATUS:**

	US FWS		US Forest Service		Tenn. Valley Author.		US DOD/ACOE	
	ha	%	ha	%	ha	%	ha	%
Status 1	73,747.1	< 1	5,525.7	< 1	0.0	0	0.0	0
Status 2	173,637.9	2	28,056.8	< 1	0.0	0	583.6	< 1
Status 3	1,052.7	< 1	274,959.6	3	6,360.5	< 1	104,547.5	1
Status 4	17.0	< 1	< 0.1	< 1	0.0	0	2.6	< 1
Total	248,454.7	3	308,542.2	3	6,360.5	< 1	105,133.7	1
	US Dept. of Energy		US Nat. Park Service		NOAA		Other Federal Lands	
	ha	%	ha	%	ha	%	ha	%
Status 1	0.0	0	8,709.6	< 1	10.5	< 1	0.0	0
Status 2	0.0	0	816.9	< 1	3,468.7	< 1	0.0	0
Status 3	15,954.9	< 1	1,902.1	< 1	0.0	0	1,508.6	< 1
Status 4	0.0	0	0.0	0	0.0	0	0.0	0
Total	15,954.9	< 1	11,428.6	< 1	3,479.2	< 1	1,508.6	< 1
	Native Am. Reserv.		State Park/Hist. Park		State WMA/Gameland		State Forest	
	ha	%	ha	%	ha	%	ha	%
Status 1	0.0	0	123.4	< 1	1.1	< 1	0.0	0
Status 2	0.0	0	671.4	< 1	257,592.4	3	0.0	0
Status 3	1,705.7	< 1	133,150.2	1	102,233.0	1	62,449.7	< 1
Status 4	0.0	0	< 0.1	< 1	8,299.0	< 1	4.4	< 1
Total	1,705.7	< 1	133,945.1	1	368,125.5	4	62,454.2	< 1
	State Coastal Reserve		ST Nat.Area/Preserve		Other State Lands		Private Cons. Easemt.	
	ha	%	ha	%	ha	%	ha	%
Status 1	0.0	0	1,880.8	< 1	0.0	0	0.0	0
Status 2	11,470.0	< 1	38,886.6	< 1	1.6	< 1	308.4	< 1
Status 3	0.0	0	3,748.7	< 1	1,808.9	< 1	34,271.3	< 1
Status 4	0.0	0	0.0	0	702.8	< 1	0.0	0
Total	11,470.0	< 1	44,516.1	< 1	2,513.3	< 1	34,579.7	< 1
	Private Land - No Res.		Water		Overall Total			
	ha	%	ha	%	ha	%		
Status 1	0.0	0	0.0	0	89,998.2	< 1		
Status 2	0.0	0	0.0	0	515,494.3	6		
Status 3	451.7	< 1	0.0	0	746,105.1	11		
Status 4	7,515,691.4	82	23,983.4	< 1	7,556,982.8	82		
Total	7,516,143.1	82	23,983.4	< 1	8,908,580.3	100		

GAP Status 1: An area having permanent protection from conversion of natural land cover and a mandated management plan in operation to maintain a natural state within which disturbance events (of natural type, frequency, and intensity) are allowed to proceed without interference or are mimicked through management.

GAP Status 2: An area having permanent protection from conversion of natural land cover and a mandated management plan in operation to maintain a primarily natural state, but which may receive use or management practices that degrade the quality of existing natural communities.

GAP Status 3: An area having permanent protection from conversion of natural land cover for the majority of the area, but subject to extractive uses of either a broad, low-intensity type or localized intense type. It also confers protection to federally listed endangered and threatened species throughout the area.

GAP Status 4: Lack of irrevocable easement or mandate to prevent conversion of natural habitat types to anthropogenic habitat types. Allows for intensive use throughout the tract. Also includes those tracts for which the existence of such restrictions or sufficient information to establish a higher status is unknown.

## PREDICTED HABITAT MODEL(S):

### Year-round Model:

Habitat Description: Sliders inhabit all manners of coastal plain freshwater habitats, from lakes and ponds, to rivers, ditches, marshes, bays, and swamps (Carr 1952, Conant 1958). The species is a common inhabitant of permanent ponds, such as sink holes, Carolina Bays and small manmade impoundments. But, it is also found in rivers, small streams and sloughs and at the edges of lakes (Carr 1952). It prefers quiet or still waters with an abundance of aquatic vegetation, soft organic substrates, and basking sites, such as half submerged fallen trees or shoreline mud spots. Can tolerate some brackish waters but prefers freshwater waterbodies. The species normally travels by water and rarely ventures far over land. Therefore, best habitats are near river and stream corridors.

Quoted directly from NC State Habitat Notes.

Ecosystem Classifiers: Aquatic species, only terrestrial systems selected apply to nesting habitat. Amy Silvano 8jul05

### Hydrography Mask:

Freshwater Only

Slow Current Only

Utilizes flowing water features with buffers of 60m from and 60m into selected water features.

Utilizes open water features with buffers of 60m from and 60m into selected water features.

Utilizes wet vegetation features with buffer of unlimited into selected vegetation features.

### Selected Map Units:

Functional Group	Map Unit Name
Anthropogenic	Bare Sand
Anthropogenic	Bare Soil
Brackish Tidal Marsh & Wetland	Atlantic Coastal Plain Central Salt and Brackish Tidal Marsh
Brackish Tidal Marsh & Wetland	Atlantic Coastal Plain Embayed Region Tidal Salt and Brackish Marsh
Brackish Tidal Marsh & Wetland	Atlantic Coastal Plain Indian River Lagoon Tidal Marsh
Brackish Tidal Marsh & Wetland	Atlantic Coastal Plain Northern Sea-Level Fen
Brackish Tidal Marsh & Wetland	Atlantic Coastal Plain Northern Tidal Salt Marsh
Brackish Tidal Marsh & Wetland	Atlantic Coastal Plain Northern Tidal Wooded Swamp
Brackish Tidal Marsh & Wetland	Atlantic Coastal Plain Southern Tidal Wooded Swamp
Brackish Tidal Marsh & Wetland	East Gulf Coastal Plain Tidal Wooded Swamp
Brackish Tidal Marsh & Wetland	Florida Big Bend Salt-Brackish Tidal Marsh
Brackish Tidal Marsh & Wetland	Mississippi Sound Salt and Brackish Tidal Marsh
Brackish Tidal Marsh & Wetland	South Florida Everglades Sawgrass Marsh
Brackish Tidal Marsh & Wetland	South Florida Mangrove Swamp
Brackish Tidal Marsh & Wetland	Southwest Florida Perched Barriers Salt Swamp and Lagoon - Mangrove Modifier
Brackish Tidal Marsh & Wetland	Southwest Florida Perched Barriers Salt Swamp and Lagoon - Marsh Modifier
Forest/Woodland	Atlantic Coastal Plain Central Maritime Forest
Forest/Woodland	Atlantic Coastal Plain Northern Maritime Forest
Forest/Woodland	Atlantic Coastal Plain Southern Maritime Forest
Forest/Woodland	East Gulf Coastal Plain Maritime Forest
Forest/Woodland	Mississippi Delta Maritime Forest
Forest/Woodland	Southeast Florida Coastal Strand and Maritime Hammock
Forest/Woodland	Southwest Florida Coastal Strand and Maritime Hammock
Freshwater Tidal Marsh & Wetland	Atlantic Coastal Plain Central Fresh-Oligohaline Tidal Marsh
Freshwater Tidal Marsh & Wetland	Atlantic Coastal Plain Embayed Region Tidal Freshwater Marsh
Freshwater Tidal Marsh & Wetland	Atlantic Coastal Plain Northern Fresh and Oligohaline Tidal Marsh
Freshwater Tidal Marsh & Wetland	Florida Big Bend Fresh-Oligohaline Tidal Marsh
Water	Open Water (Fresh)
Wetlands	Atlantic Coastal Plain Blackwater Stream Floodplain Forest - Forest Modifier
Wetlands	Atlantic Coastal Plain Blackwater Stream Floodplain Forest - Herbaceous Modifier

Wetlands	Atlantic Coastal Plain Brownwater Stream Floodplain Forest
Wetlands	Atlantic Coastal Plain Clay-Based Carolina Bay Forested Wetland
Wetlands	Atlantic Coastal Plain Clay-Based Carolina Bay Herbaceous Wetland
Wetlands	Atlantic Coastal Plain Depression Pondshore
Wetlands	Atlantic Coastal Plain Large Natural Lakeshore
Wetlands	Atlantic Coastal Plain Nonriverine Swamp and Wet Hardwood Forest - Taxodium/Nyssa Modifier
Wetlands	Atlantic Coastal Plain Nonriverine Swamp and Wet Hardwood Forest - Oak Dominated Modifier
Wetlands	Atlantic Coastal Plain Northern Basin Peat Swamp
Wetlands	Atlantic Coastal Plain Northern Basin Swamp and Wet Hardwood Forest
Wetlands	Atlantic Coastal Plain Northern Pondshore
Wetlands	Atlantic Coastal Plain Northern Wet Longleaf Pine Savanna and Flatwoods
Wetlands	Atlantic Coastal Plain Peatland Pocosin
Wetlands	Atlantic Coastal Plain Sandhill Seep
Wetlands	Atlantic Coastal Plain Small Blackwater River Floodplain Forest
Wetlands	Atlantic Coastal Plain Small Brownwater River Floodplain Forest
Wetlands	Atlantic Coastal Plain Southern Wet Pine Savanna and Flatwoods
Wetlands	Atlantic Coastal Plain Streamhead Seepage Swamp, Pocosin, and Baygall
Wetlands	Atlantic Coastal Plain Xeric River Dune
Wetlands	Central Appalachian Floodplain - Forest Modifier
Wetlands	Central Appalachian Floodplain - Herbaceous Modifier
Wetlands	Central Appalachian Riparian - Forest Modifier
Wetlands	Central Appalachian Riparian - Herbaceous Modifier
Wetlands	Central Florida Herbaceous Pondshore
Wetlands	Central Florida Herbaceous Seep
Wetlands	Central Florida Pine Flatwoods
Wetlands	Central Interior Highlands and Appalachian Sinkhole and Depression Pond
Wetlands	Cumberland Riverscour
Wetlands	East Gulf Coastal Plain Interior Shrub Bog
Wetlands	East Gulf Coastal Plain Jackson Plain Dry Flatwoods - Open Understory Modifier
Wetlands	East Gulf Coastal Plain Jackson Plain Dry Flatwoods - Scrub/Shrub Understory Modifier
Wetlands	East Gulf Coastal Plain Large River Floodplain Forest - Forest Modifier
Wetlands	East Gulf Coastal Plain Large River Floodplain Forest - Herbaceous Modifier
Wetlands	East Gulf Coastal Plain Near-Coast Pine Flatwoods - Offsite Hardwood Modifier
Wetlands	East Gulf Coastal Plain Near-Coast Pine Flatwoods - Open Understory Modifier
Wetlands	East Gulf Coastal Plain Near-Coast Pine Flatwoods - Scrub/Shrub Understory Modifier
Wetlands	East Gulf Coastal Plain Northern Depression Pondshore
Wetlands	East Gulf Coastal Plain Northern Seepage Swamp
Wetlands	East Gulf Coastal Plain Small Stream and River Floodplain Forest
Wetlands	East Gulf Coastal Plain Southern Depression Pondshore
Wetlands	East Gulf Coastal Plain Southern Loblolly-Hardwood Flatwoods
Wetlands	East Gulf Coastal Plain Treeless Savanna and Wet Prairie
Wetlands	Floridian Highlands Freshwater Marsh
Wetlands	Lower Mississippi River Bottomland and Floodplain Forest
Wetlands	Lower Mississippi River Bottomland Depressions - Forest Modifier
Wetlands	Lower Mississippi River Bottomland Depressions - Herbaceous Modifier
Wetlands	Mississippi River Low Floodplain (Bottomland) Forest
Wetlands	Mississippi River Riparian Forest
Wetlands	North-Central Appalachian Acidic Swamp
Wetlands	North-Central Appalachian Seepage Fen
Wetlands	North-Central Interior and Appalachian Rich Swamp
Wetlands	South Florida Bayhead Swamp
Wetlands	South Florida Cypress Dome
Wetlands	South Florida Dwarf Cypress Savanna
Wetlands	South Florida Freshwater Slough and Gator Hole
Wetlands	South Florida Hardwood Hammock
Wetlands	South Florida Pine Flatwoods

Wetlands	South Florida Pond-Apple/Popash Slough
Wetlands	South Florida Wet Marl Prairie
Wetlands	South Florida Willow Head
Wetlands	South-Central Interior Large Floodplain - Forest Modifier
Wetlands	South-Central Interior Large Floodplain - Herbaceous Modifier
Wetlands	South-Central Interior Small Stream and Riparian
Wetlands	South-Central Interior/Upper Coastal Plain Wet Flatwoods
Wetlands	Southern and Central Appalachian Bog and Fen
Wetlands	Southern Appalachian Seepage Wetland
Wetlands	Southern Coastal Plain Blackwater River Floodplain Forest
Wetlands	Southern Coastal Plain Herbaceous Seepage Bog
Wetlands	Southern Coastal Plain Hydric Hammock
Wetlands	Southern Coastal Plain Nonriverine Basin Swamp
Wetlands	Southern Coastal Plain Nonriverine Cypress Dome
Wetlands	Southern Coastal Plain Seepage Swamp and Baygall
Wetlands	Southern Coastal Plain Spring-run Stream Aquatic Vegetation
Wetlands	Southern Piedmont Large Floodplain Forest - Forest Modifier
Wetlands	Southern Piedmont Large Floodplain Forest - Herbaceous Modifier
Wetlands	Southern Piedmont Seepage Wetland
Wetlands	Southern Piedmont Small Floodplain and Riparian Forest
Wetlands	Southern Piedmont/Ridge and Valley Upland Depression Swamp
Wetlands	Unconsolidated Shore (Lake/River/Pond)
Wetlands	Western Highland Rim Seepage Fen

- CITATIONS:** Ashton, R. E., Jr., and P. S. Ashton. 1991. Handbook of reptiles and amphibians of Florida. Part two. Lizards, turtles & crocodylians. Revised second edition. Windward Pub., Inc., Miami. 191 pp.
- Behler, J. L., and F. W. King. 1979. The Audubon Society field guide to North American reptiles and amphibians. Alfred A. Knopf, New York. 719 pp.
- Burke, V. J., J. L. Greene, and J. W. Gibbons. 1995. The effect of sample size and study duration on metapopulation estimates for slider turtles (*TRACHEMYS SCRIPTA*). *Herpetologica* 51:451-456.
- Carr, A. 1952. Handbook of Turtles. Cornell University Press, Ithaca, NY. 542 pp.
- Ernst, C. H., and R. W. Barbour. 1972. Turtles of the United States. Univ. Press of Kentucky, Lexington. x + 347 pp.
- Ernst, C. H.; R. W. Barbour, and J. R. Butler. 1972. Habitat preferences of two Florida turtles, Genus *Kinosternon*. *Transactions of Kentucky Academy of Science*. 33:41-42.
- Frazer, N. B., J. W. Gibbons, and J. L. Greene. 1990. Life table of a slider turtle population. Pages 183-200 in J. W. Gibbons, editor. Life history and ecology of the slider turtle. Smithsonian Institution Press, Washington, D.C.
- Gibbons, J. W. 1990. Life history and ecology of the slider turtle. Smithsonian Inst. Press, Washington, D.C. xiv + 368 pp.
- Green, N. B., and T. K. Pauley. 1987. Amphibians and reptiles in West Virginia. University of Pittsburg Press, Pittsburg, Pennsylvania. xi + 241 pp.
- Hart, D. R. 1983. Dietary and habitat shift with size of red-eared turtles (*PSEUDEMYX SCRIPTA*) in a southern Louisiana population. *Herpetologica* 39:285-290.
- Iverson, J. B. 1991. Patterns of survivorship in turtles (order Testudines). *Canadian J. Zoology* 69:385-391.
- Jackson, D. R. 1988. A re-examination of fossil turtles of the genus *TRACHEMYS* (Testudines: Emydidae). *Herpetologica* 44:317-325.
- Jackson, D. R. 1994. Overwintering of hatchling turtles in northern Florida. *J. Herpetol.* 28:401-402.
- Mitchell, J. C. 1994. The reptiles of Virginia. Washington, DC: Smithsonian Institution Press.
- Palmer, W. M., and A. L. Braswell. 1995. Reptiles of North Carolina. North Carolina State Museum of Natural Sciences, University of North Carolina Press, Chapel Hill, North Carolina.
- Schwartz, A., and R. W. Henderson. 1991. Amphibians and Reptiles of the West Indies: Descriptions, Distributions, and Natural History. University of Florida Press, Gainesville, Florida. xvi + 720 pp.
- Seidel, M. E., and H. M. Smith. 1986. *CHRYSEMYS*, *PSEUDEMYX*, *TRACHEMYS* (Testudines: Emydidae): did Agassiz have it right? *Herpetologica* 42:242-248.

For more information:: SE-GAP Analysis Project / BaSIC  
127 David Clark Labs  
Dept. of Biology, NCSU  
Raleigh, NC 27695-7617  
(919) 513-2853  
[www.basic.ncsu.edu/segap](http://www.basic.ncsu.edu/segap)

Compiled: 15 September 2011

This data was compiled and/or developed  
by the Southeast GAP Analysis Project at  
The Biodiversity and Spatial Information  
Center, North Carolina State University.