



SOUTHEAST GAP ANALYSIS PROJECT



Species Modeling Report

Sand Skink

Neoseps reynoldsi

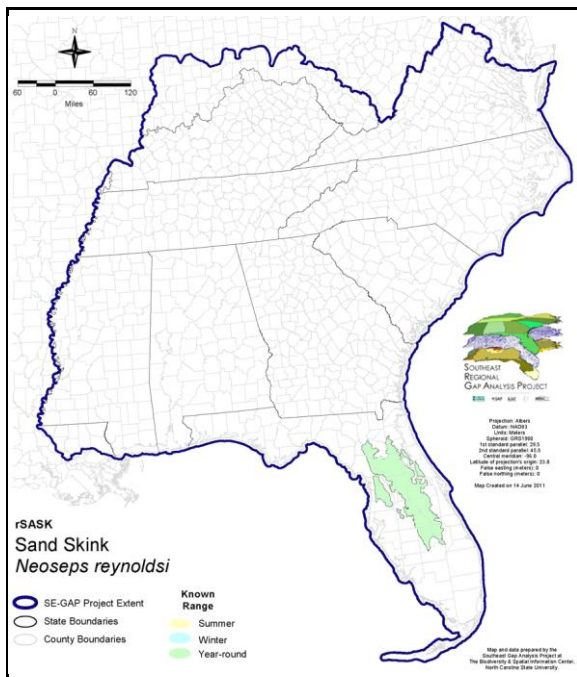
Taxa: Reptilian
 Order: Squamata
 Family: Scincidae

SE-GAP Spp Code: **rSASK**

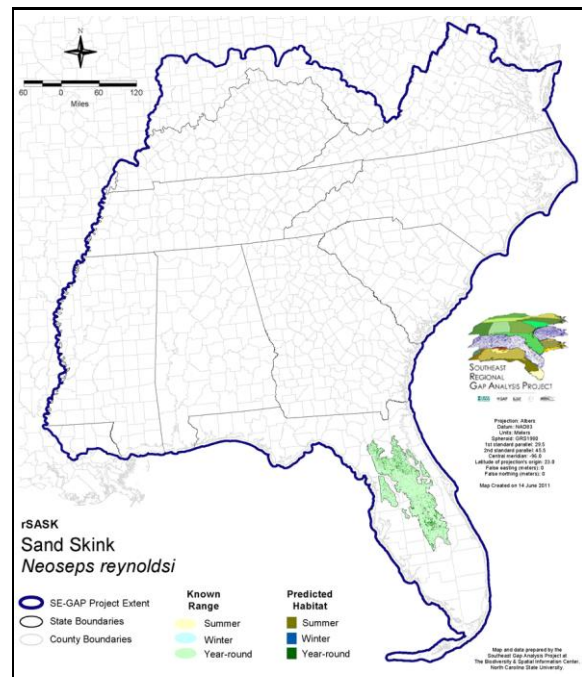
ITIS Species Code: 174005

NatureServe Element Code: ARACH02010

KNOWN RANGE:



PREDICTED HABITAT:



Range Map Link: http://www.basic.ncsu.edu/segap/datazip/maps/SE_Range_rSASK.pdf

Predicted Habitat Map Link: http://www.basic.ncsu.edu/segap/datazip/maps/SE_Dist_rSASK.pdf

GAP Online Tool Link: <http://www.gapservice.ncsu.edu/segap/segap/index2.php?species=rSASK>

Data Download: http://www.basic.ncsu.edu/segap/datazip/region/vert/rSASK_se00.zip

PROTECTION STATUS:

Reported on March 14, 2011

Federal Status: LT
 State Status: FL (FT)
 NS Global Rank: G2
 NS State Rank: FL (S2)

SUMMARY OF PREDICTED HABITAT BY MANAGMENT AND GAP PROTECTION STATUS:

	US FWS		US Forest Service		Tenn. Valley Author.		US DOD/ACOE	
	ha	%	ha	%	ha	%	ha	%
Status 1	0.2	< 1	0.0	0	0.0	0	0.0	0
Status 2	0.0	0	2,018.1	< 1	0.0	0	0.0	0
Status 3	0.0	0	24,766.2	9	0.0	0	15,369.3	5
Status 4	0.0	0	0.0	0	0.0	0	0.0	0
Total	0.2	< 1	26,784.3	9	0.0	0	15,369.3	5
	US Dept. of Energy		US Nat. Park Service		NOAA		Other Federal Lands	
	ha	%	ha	%	ha	%	ha	%
Status 1	0.0	0	0.0	0	0.0	0	0.0	0
Status 2	0.0	0	0.0	0	0.0	0	0.0	0
Status 3	0.0	0	0.0	0	0.0	0	0.0	0
Status 4	0.0	0	0.0	0	0.0	0	0.0	0
Total	0.0	0	0.0	0	0.0	0	0.0	0
	Native Am. Reserv.		State Park/Hist. Park		State WMA/Gameland		State Forest	
	ha	%	ha	%	ha	%	ha	%
Status 1	0.0	0	0.0	0	0.0	0	0.0	0
Status 2	0.0	0	0.0	0	9,187.7	3	0.0	0
Status 3	0.0	0	17,160.8	6	0.0	0	10,017.7	4
Status 4	0.0	0	0.0	0	0.0	0	0.0	0
Total	0.0	0	17,160.8	6	9,187.7	3	10,017.7	4
	State Coastal Reserve		ST Nat.Area/Preserve		Other State Lands		Private Cons. Easemt.	
	ha	%	ha	%	ha	%	ha	%
Status 1	0.0	0	0.0	0	0.0	0	0.0	0
Status 2	0.0	0	0.0	0	0.0	0	213.8	< 1
Status 3	0.0	0	723.5	< 1	1,024.8	< 1	1,410.4	< 1
Status 4	0.0	0	0.0	0	0.0	0	0.0	0
Total	0.0	0	723.5	< 1	1,024.8	< 1	1,624.2	< 1
	Private Land - No Res.		Water		Overall Total			
	ha	%	ha	%	ha	%		
Status 1	0.0	0	0.0	0	0.2	< 1		
Status 2	0.0	0	0.0	0	11,419.6	4		
Status 3	0.0	0	0.0	0	70,472.8	34		
Status 4	175,159.7	62	160.0	< 1	175,319.7	62		
Total	175,159.7	62	160.0	< 1	257,212.3	100		

GAP Status 1: An area having permanent protection from conversion of natural land cover and a mandated management plan in operation to maintain a natural state within which disturbance events (of natural type, frequency, and intensity) are allowed to proceed without interference or are mimicked through management.

GAP Status 2: An area having permanent protection from conversion of natural land cover and a mandated management plan in operation to maintain a primarily natural state, but which may receive use or management practices that degrade the quality of existing natural communities.

GAP Status 3: An area having permanent protection from conversion of natural land cover for the majority of the area, but subject to extractive uses of either a broad, low-intensity type or localized intense type. It also confers protection to federally listed endangered and threatened species throughout the area.

GAP Status 4: Lack of irrevocable easement or mandate to prevent conversion of natural habitat types to anthropogenic habitat types. Allows for intensive use throughout the tract. Also includes those tracts for which the existence of such restrictions or sufficient information to establish a higher status is unknown.

PREDICTED HABITAT MODEL(S):

Year-round Model:

Habitat Description: Primary habitat is rosemary scrub, but occurs in sand pine scrub, oak scrub, scrubby flatwoods; i.e. habitats with loose, sandy soils and scrubby vegetation lacking grasses and tree canopies (Wilson 1995). M. Rubino, 10mar05.

Selected Map Units:

Functional Group	Map Unit Name
Forest/Woodland	Atlantic Coastal Plain Dry and Dry-Mesic Oak Forest
Forest/Woodland	Atlantic Coastal Plain Upland Longleaf Pine Woodland
Forest/Woodland	Florida Longleaf Pine Sandhill - Scrub/Shrub Understory Modifier
Forest/Woodland	Florida Peninsula Inland Scrub
Forest/Woodland	Northern Atlantic Coastal Plain Dry Hardwood Forest
Forest/Woodland	Southern Coastal Plain Dry Upland Hardwood Forest
Forest/Woodland	Southern Coastal Plain Oak Dome and Hammock
Wetlands	Central Florida Pine Flatwoods
Wetlands	South Florida Pine Flatwoods

CITATIONS:

For more information:: SE-GAP Analysis Project / BaSIC
127 David Clark Labs
Dept. of Biology, NCSU
Raleigh, NC 27695-7617
(919) 513-2853
www.basic.ncsu.edu/segap

Compiled: 15 September 2011

This data was compiled and/or developed
by the Southeast GAP Analysis Project at
The Biodiversity and Spatial Information
Center, North Carolina State University.