



SOUTHEAST GAP ANALYSIS PROJECT



Species Modeling Report

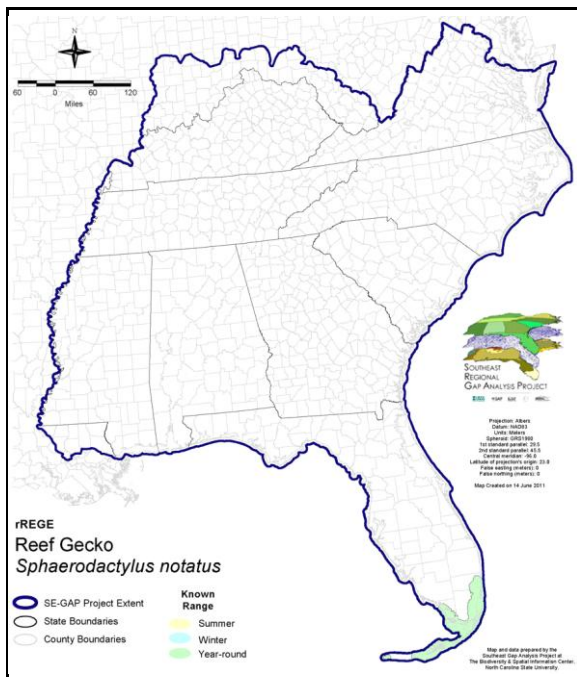
Reef Gecko

Sphaerodactylus notatus

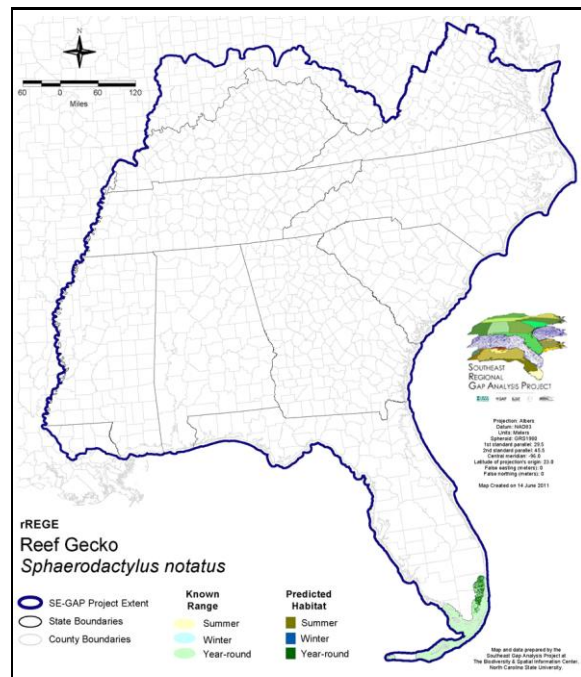
Taxa: Reptilian
 Order: Squamata
 Family: Gekkonidae

SE-GAP Spp Code: **rREGE**
 ITIS Species Code: 174083
 NatureServe Element Code: ARACD05030

KNOWN RANGE:



PREDICTED HABITAT:



Range Map Link: http://www.basic.ncsu.edu/segap/datazip/maps/SE_Range_rREGE.pdf

Predicted Habitat Map Link: http://www.basic.ncsu.edu/segap/datazip/maps/SE_Dist_rREGE.pdf

GAP Online Tool Link: <http://www.gapservice.ncsu.edu/segap/segap/index2.php?species=rREGE>

Data Download: http://www.basic.ncsu.edu/segap/datazip/region/vert/rREGE_se00.zip

PROTECTION STATUS:

Reported on March 14, 2011

Federal Status: ---
 State Status: ---
 NS Global Rank: G5
 NS State Rank: FL (SNR)

SUMMARY OF PREDICTED HABITAT BY MANAGMENT AND GAP PROTECTION STATUS:

	US FWS		US Forest Service		Tenn. Valley Author.		US DOD/ACOE	
	ha	%	ha	%	ha	%	ha	%
Status 1	577.1	< 1	0.0	0	0.0	0	0.0	0
Status 2	0.0	0	0.0	0	0.0	0	0.0	0
Status 3	0.0	0	0.0	0	0.0	0	947.3	< 1
Status 4	0.0	0	0.0	0	0.0	0	0.0	0
Total	577.1	< 1	0.0	0	0.0	0	947.3	< 1
	US Dept. of Energy		US Nat. Park Service		NOAA		Other Federal Lands	
	ha	%	ha	%	ha	%	ha	%
Status 1	0.0	0	3,060.7	2	0.0	0	0.0	0
Status 2	0.0	0	0.0	0	0.0	0	0.0	0
Status 3	0.0	0	0.0	0	0.0	0	0.0	0
Status 4	0.0	0	0.0	0	0.0	0	0.0	0
Total	0.0	0	3,060.7	2	0.0	0	0.0	0
	Native Am. Reserv.		State Park/Hist. Park		State WMA/Gameland		State Forest	
	ha	%	ha	%	ha	%	ha	%
Status 1	0.0	0	0.0	0	0.0	0	0.0	0
Status 2	0.0	0	0.0	0	35.3	< 1	0.0	0
Status 3	0.0	0	2,130.7	2	0.0	0	0.0	0
Status 4	0.0	0	0.0	0	0.0	0	0.0	0
Total	0.0	0	2,130.7	2	35.3	< 1	0.0	0
	State Coastal Reserve		ST Nat.Area/Preserve		Other State Lands		Private Cons. Easemt.	
	ha	%	ha	%	ha	%	ha	%
Status 1	0.0	0	0.0	0	0.0	0	0.0	0
Status 2	0.0	0	0.0	0	0.0	0	0.0	0
Status 3	0.0	0	0.0	0	0.0	0	0.0	0
Status 4	0.0	0	0.0	0	0.0	0	0.0	0
Total	0.0	0	0.0	0	0.0	0	0.0	0
	Private Land - No Res.		Water		Overall Total			
	ha	%	ha	%	ha	%	ha	%
Status 1	0.0	0	0.0	0	3,637.8 3			
Status 2	0.0	0	0.0	0	35.3 < 1			
Status 3	0.0	0	0.0	0	3,078.0 2			
Status 4	129,417.9	93	2,719.2	2	132,137.1 95			
Total	129,417.9	93	2,719.2	2	138,888.2 100			

GAP Status 1: An area having permanent protection from conversion of natural land cover and a mandated management plan in operation to maintain a natural state within which disturbance events (of natural type, frequency, and intensity) are allowed to proceed without interference or are mimicked through management.

GAP Status 2: An area having permanent protection from conversion of natural land cover and a mandated management plan in operation to maintain a primarily natural state, but which may receive use or management practices that degrade the quality of existing natural communities.

GAP Status 3: An area having permanent protection from conversion of natural land cover for the majority of the area, but subject to extractive uses of either a broad, low-intensity type or localized intense type. It also confers protection to federally listed endangered and threatened species throughout the area.

GAP Status 4: Lack of irrevocable easement or mandate to prevent conversion of natural habitat types to anthropogenic habitat types. Allows for intensive use throughout the tract. Also includes those tracts for which the existence of such restrictions or sufficient information to establish a higher status is unknown.

PREDICTED HABITAT MODEL(S):

Year-round Model:

Habitat Description: Native to Florida, the reef gecko can most commonly be found in vacant lots and buildings, beaches, hammocks, beneath tidal wrack and in pinelands (Bartlett & Bartlett 1999, Ashton 1988). This species is uncommonly edificarian but often associated with human debris and abandoned dwellings (Schwartz and Henderson 1991 in NatureServe 2005). Amy Silvano 1Aug05

Ecosystem Classifiers: Pine rockland, disturbed, beach, limestone forest, hammocks. Amy Silvano 18aug05

Selected Map Units:

Functional Group	Map Unit Name
Anthropogenic	Bare Sand
Anthropogenic	Bare Soil
Anthropogenic	Low Intensity Developed
Anthropogenic	Medium Intensity Developed
Beach	Atlantic Coastal Plain Southern Beach
Beach	South Florida Shell Hash Beach
Beach	Southeast Florida Beach
Beach	Southwest Florida Beach
Beach	Unconsolidated Shore (Beach/Dune)
Forest/Woodland	South Florida Pine Rockland
Wetlands	South Florida Hardwood Hammock
Wetlands	Southern Coastal Plain Hydric Hammock

CITATIONS:

For more information:: SE-GAP Analysis Project / BaSIC
127 David Clark Labs
Dept. of Biology, NCSU
Raleigh, NC 27695-7617
(919) 513-2853
www.basic.ncsu.edu/segap

Compiled: 15 September 2011

This data was compiled and/or developed
by the Southeast GAP Analysis Project at
The Biodiversity and Spatial Information
Center, North Carolina State University.