



SOUTHEAST GAP ANALYSIS PROJECT



Species Modeling Report

Northern Painted Turtle

Chrysemys picta

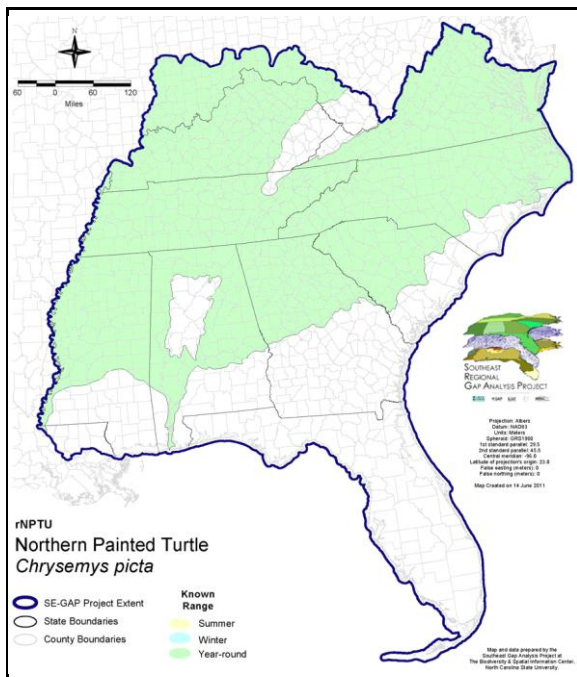
Taxa: Reptilian
 Order: Cryptodeira
 Family: Emydidae

SE-GAP Spp Code: **rNPTU**

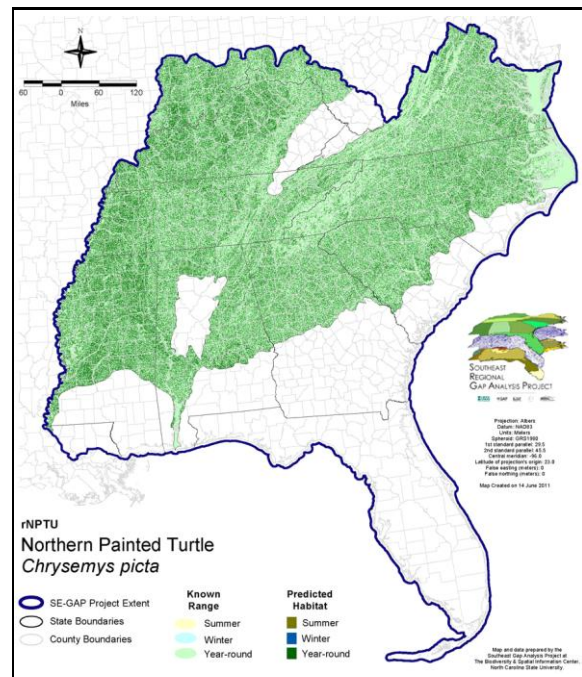
ITIS Species Code: 173783

NatureServe Element Code: ARAAD01010

KNOWN RANGE:



PREDICTED HABITAT:



Range Map Link: http://www.basic.ncsu.edu/segap/datazip/maps/SE_Range_rNPTU.pdf

Predicted Habitat Map Link: http://www.basic.ncsu.edu/segap/datazip/maps/SE_Dist_rNPTU.pdf

GAP Online Tool Link: <http://www.gapservice.ncsu.edu/segap/segap/index2.php?species=rNPTU>

Data Download: http://www.basic.ncsu.edu/segap/datazip/region/vert/rNPTU_se00.zip

PROTECTION STATUS:

Reported on March 14, 2011

Federal Status: ---

State Status: ID (P), KY (N), NE (NC), NY (GN), OR (SC), RI (Not Listed), UT (None), BC (3 (2005)), QC (Non suivie)

NS Global Rank: G5

NS State Rank: AL (S5), AR (S3), AZ (S1S2), CO (S5), CT (S5), DC (S5), DE (S5), GA (S5), IA (S5), ID (S4), IL (SNR), IN (SNR), KS (S5), KY (S5), MA (S5), MD (S5), ME (S5), MI (S5), MN (SNR), MO (SNR), MT (S4), NC (S5), ND (SNR), NE (S5), NH (S5), NJ (SNR), NM (S4), NV (SNA), NY (S5), OH (SNR), OK (S2), OR (S2), PA (SNR), RI (S5), SC (SNR), SD (S5), TN (S5), TX (S2), UT (SNA), VA (S5), VT (S5), WA (S4S5), WI (S5), WV (S5), WY (S4), AB (S1), BC (S3), MB (S4), NB (S5), NS (S5), ON (S5), QC (S4), SK (S4)

SUMMARY OF PREDICTED HABITAT BY MANAGMENT AND GAP PROTECTION STATUS:

	US FWS		US Forest Service		Tenn. Valley Author.		US DOD/ACOE	
	ha	%	ha	%	ha	%	ha	%
Status 1	10,089.6	< 1	2,534.3	< 1	0.0	0	0.0	0
Status 2	40,062.8	< 1	35,320.9	< 1	0.0	0	2,574.9	< 1
Status 3	1,355.0	< 1	300,935.3	1	45,427.2	< 1	124,177.2	< 1
Status 4	40.6	< 1	0.0	0	0.0	0	55.9	< 1
Total	51,548.0	< 1	338,790.5	2	45,427.2	< 1	126,808.0	< 1
	US Dept. of Energy		US Nat. Park Service		NOAA		Other Federal Lands	
	ha	%	ha	%	ha	%	ha	%
Status 1	0.0	0	26,625.2	< 1	0.0	0	0.0	0
Status 2	0.0	0	708.8	< 1	51.1	< 1	0.0	0
Status 3	26,382.8	< 1	32,070.8	< 1	0.0	0	897.8	< 1
Status 4	0.0	0	0.0	0	0.0	0	0.0	0
Total	26,382.8	< 1	59,404.9	< 1	51.1	< 1	897.8	< 1
	Native Am. Reserv.		State Park/Hist. Park		State WMA/Gameland		State Forest	
	ha	%	ha	%	ha	%	ha	%
Status 1	0.0	0	208.1	< 1	32.7	< 1	0.0	0
Status 2	0.0	0	3,347.8	< 1	111,185.0	< 1	26.0	< 1
Status 3	5,869.2	< 1	44,282.9	< 1	56,229.2	< 1	17,601.1	< 1
Status 4	0.0	0	0.0	0	19,572.8	< 1	0.0	0
Total	5,869.2	< 1	47,838.8	< 1	187,019.7	< 1	17,627.1	< 1
	State Coastal Reserve		ST Nat.Area/Preserve		Other State Lands		Private Cons. Easemt.	
	ha	%	ha	%	ha	%	ha	%
Status 1	0.0	0	1,624.2	< 1	0.0	0	0.0	0
Status 2	493.9	< 1	12,334.2	< 1	4.2	< 1	409.2	< 1
Status 3	0.0	0	1,835.6	< 1	2,390.0	< 1	7,301.9	< 1
Status 4	0.0	0	0.0	0	2,128.3	< 1	0.0	0
Total	493.9	< 1	15,794.1	< 1	4,522.5	< 1	7,711.1	< 1
	Private Land - No Res.		Water		Overall Total			
	ha	%	ha	%	ha	%		
Status 1	0.0	0	0.0	0	41,114.2	< 1		
Status 2	0.0	0	0.0	0	206,519.0	< 1		
Status 3	0.0	0	0.0	0	666,756.0	4		
Status 4	20,394,466.8	94	24,101.5	< 1	20,459,898.2	94		
Total	20,394,466.8	94	24,101.5	< 1	21,374,287.3	100		

GAP Status 1: An area having permanent protection from conversion of natural land cover and a mandated management plan in operation to maintain a natural state within which disturbance events (of natural type, frequency, and intensity) are allowed to proceed without interference or are mimicked through management.

GAP Status 2: An area having permanent protection from conversion of natural land cover and a mandated management plan in operation to maintain a primarily natural state, but which may receive use or management practices that degrade the quality of existing natural communities.

GAP Status 3: An area having permanent protection from conversion of natural land cover for the majority of the area, but subject to extractive uses of either a broad, low-intensity type or localized intense type. It also confers protection to federally listed endangered and threatened species throughout the area.

GAP Status 4: Lack of irrevocable easement or mandate to prevent conversion of natural habitat types to anthropogenic habitat types. Allows for intensive use throughout the tract. Also includes those tracts for which the existence of such restrictions or sufficient information to establish a higher status is unknown.

PREDICTED HABITAT MODEL(S):

Year-round Model:

Habitat Description: Painted turtles are primarily aquatic, leaving the water mainly for nesting purposes (Palmer & Braswell 1995). They prefer slow moving shallow waters of ponds, lakes, oxbows, creeks, sloughs, and freshwater marshes, especially those with soft bottoms and an abundance of aquatic vegetation (Ernst et al. 1994, Palmer & Braswell 1995). Amy Silvano 2jul05

Ecosystem Classifiers: Hydrology is model driver. All systems except Montane, Higher elevation Cove, Glades, prairie, Bald, Rock outcrops and open beach. Brackish wetland and marshed in ACP only, indicated as AMU. Amy Silvano 2jul05

Hydrography Mask:

Freshwater Only

Slow Current Only

Utilizes flowing water features with buffers of 120m from and 60m into selected water features.

Utilizes open water features with buffers of 120m from and 60m into selected water features.

Utilizes wet vegetation features with buffer of 120m from selected vegetation features.

Selected Map Units:

Functional Group	Map Unit Name
Anthropogenic	Bare Sand
Anthropogenic	Bare Soil
Anthropogenic	Deciduous Plantations
Anthropogenic	Developed Open Space
Anthropogenic	Evergreen Plantations
Anthropogenic	Low Intensity Developed
Anthropogenic	Pasture/Hay
Anthropogenic	Row Crop
Anthropogenic	Successional Grassland/Herbaceous
Anthropogenic	Successional Grassland/Herbaceous (Other)
Anthropogenic	Successional Grassland/Herbaceous (Utility Swath)
Anthropogenic	Successional Shrub/Scrub (Clear Cut)
Anthropogenic	Successional Shrub/Scrub (Other)
Anthropogenic	Successional Shrub/Scrub (Utility Swath)
Coastal Dune & Freshwater Wetland	Atlantic and Gulf Coastal Plain Interdunal Wetland
Forest/Woodland	Allegheny-Cumberland Dry Oak Forest and Woodland
Forest/Woodland	Allegheny-Cumberland Dry Oak Forest and Woodland - Hardwood Modifier
Forest/Woodland	Allegheny-Cumberland Dry Oak Forest and Woodland - Pine Modifier
Forest/Woodland	Appalachian Serpentine Woodland
Forest/Woodland	Atlantic Coastal Plain Central Maritime Forest
Forest/Woodland	Atlantic Coastal Plain Dry and Dry-Mesic Oak Forest
Forest/Woodland	Atlantic Coastal Plain Fall-Line Sandhills Longleaf Pine Woodland - Loblolly Modifier
Forest/Woodland	Atlantic Coastal Plain Fall-line Sandhills Longleaf Pine Woodland - Offsite Hardwood Modifier
Forest/Woodland	Atlantic Coastal Plain Fall-line Sandhills Longleaf Pine Woodland - Open Understory Modifier
Forest/Woodland	Atlantic Coastal Plain Fall-line Sandhills Longleaf Pine Woodland - Scrub/Shrub Understory Modifier
Forest/Woodland	Atlantic Coastal Plain Mesic Hardwood and Mixed Forest
Forest/Woodland	Atlantic Coastal Plain Northern Maritime Forest
Forest/Woodland	Atlantic Coastal Plain Northern Mixed Oak-Heath Forest
Forest/Woodland	Atlantic Coastal Plain Southern Maritime Forest
Forest/Woodland	Atlantic Coastal Plain Upland Longleaf Pine Woodland
Forest/Woodland	Central Appalachian Oak and Pine Forest

Forest/Woodland	Central Appalachian Pine-Oak Rocky Woodland
Forest/Woodland	East Gulf Coastal Plain Interior Shortleaf Pine-Oak Forest - Hardwood Modifier
Forest/Woodland	East Gulf Coastal Plain Interior Shortleaf Pine-Oak Forest - Mixed Modifier
Forest/Woodland	East Gulf Coastal Plain Interior Shortleaf Pine-Oak Forest - Pine Modifier
Forest/Woodland	East Gulf Coastal Plain Interior Upland Longleaf Pine Woodland - Loblolly Modifier
Forest/Woodland	East Gulf Coastal Plain Interior Upland Longleaf Pine Woodland - Offsite Hardwood Modifier
Forest/Woodland	East Gulf Coastal Plain Interior Upland Longleaf Pine Woodland - Open Understory Modifier
Forest/Woodland	East Gulf Coastal Plain Interior Upland Longleaf Pine Woodland - Scrub/Shrub Modifier
Forest/Woodland	East Gulf Coastal Plain Limestone Forest
Forest/Woodland	East Gulf Coastal Plain Maritime Forest
Forest/Woodland	East Gulf Coastal Plain Northern Dry Upland Hardwood Forest
Forest/Woodland	East Gulf Coastal Plain Northern Dry Upland Hardwood Forest - Offsite Pine Modifier
Forest/Woodland	East Gulf Coastal Plain Northern Loess Bluff Forest
Forest/Woodland	East Gulf Coastal Plain Northern Loess Plain Oak-Hickory Upland - Hardwood Modifier
Forest/Woodland	East Gulf Coastal Plain Northern Loess Plain Oak-Hickory Upland - Juniper Modifier
Forest/Woodland	East Gulf Coastal Plain Northern Mesic Hardwood Forest
Forest/Woodland	East Gulf Coastal Plain Southern Loess Bluff Forest
Forest/Woodland	East Gulf Coastal Plain Southern Mesic Slope Forest
Forest/Woodland	Florida Longleaf Pine Sandhill - Open Understory Modifier
Forest/Woodland	Florida Longleaf Pine Sandhill - Scrub/Shrub Understory Modifier
Forest/Woodland	Mississippi Delta Maritime Forest
Forest/Woodland	Northeastern Interior Dry Oak Forest - Mixed Modifier
Forest/Woodland	Northeastern Interior Dry Oak Forest - Virginia/Pitch Pine Modifier
Forest/Woodland	Northeastern Interior Dry Oak Forest-Hardwood Modifier
Forest/Woodland	Northern Atlantic Coastal Plain Dry Hardwood Forest
Forest/Woodland	South-Central Interior Mesophytic Forest
Forest/Woodland	Southeast Florida Coastal Strand and Maritime Hammock
Forest/Woodland	Southeastern Interior Longleaf Pine Woodland
Forest/Woodland	Southern and Central Appalachian Cove Forest
Forest/Woodland	Southern and Central Appalachian Oak Forest
Forest/Woodland	Southern and Central Appalachian Oak Forest - Xeric
Forest/Woodland	Southern Appalachian Low Mountain Pine Forest
Forest/Woodland	Southern Coastal Plain Dry Upland Hardwood Forest
Forest/Woodland	Southern Coastal Plain Oak Dome and Hammock
Forest/Woodland	Southern Interior Low Plateau Dry-Mesic Oak Forest
Forest/Woodland	Southern Interior Low Plateau Dry-Mesic Oak Forest - Evergreen Modifier
Forest/Woodland	Southern Piedmont Dry Oak-(Pine) Forest - Hardwood Modifier
Forest/Woodland	Southern Piedmont Dry Oak-(Pine) Forest - Loblolly Pine Modifier
Forest/Woodland	Southern Piedmont Dry Oak-(Pine) Forest - Mixed Modifier
Forest/Woodland	Southern Piedmont Dry Oak-Heath Forest - Hardwood Modifier
Forest/Woodland	Southern Piedmont Dry Oak-Heath Forest - Mixed Modifier
Forest/Woodland	Southern Piedmont Dry Oak-Heath Forest - Virginia/Pitch Pine Modifier
Forest/Woodland	Southern Piedmont Mafic Hardpan Woodland
Forest/Woodland	Southern Piedmont Mesic Forest
Forest/Woodland	Southern Piedmont Northern Triassic Basin Dry Forest
Forest/Woodland	Southern Ridge and Valley Dry Calcareous Forest
Forest/Woodland	Southern Ridge and Valley Dry Calcareous Forest - Hardwood Modifier
Forest/Woodland	Southern Ridge and Valley Dry Calcareous Forest - Pine Modifier
Forest/Woodland	Southwest Florida Coastal Strand and Maritime Hammock
Freshwater Tidal Marsh & Wetland	Atlantic Coastal Plain Central Fresh-Oligohaline Tidal Marsh
Freshwater Tidal Marsh & Wetland	Atlantic Coastal Plain Embayed Region Tidal Freshwater Marsh
Freshwater Tidal Marsh & Wetland	Atlantic Coastal Plain Northern Fresh and Oligohaline Tidal Marsh
Freshwater Tidal Marsh & Wetland	Florida Big Bend Fresh-Oligohaline Tidal Marsh
Water	Open Water (Fresh)
Wetlands	Atlantic Coastal Plain Blackwater Stream Floodplain Forest - Forest Modifier
Wetlands	Atlantic Coastal Plain Blackwater Stream Floodplain Forest - Herbaceous Modifier

Wetlands	Atlantic Coastal Plain Brownwater Stream Floodplain Forest
Wetlands	Atlantic Coastal Plain Clay-Based Carolina Bay Forested Wetland
Wetlands	Atlantic Coastal Plain Clay-Based Carolina Bay Herbaceous Wetland
Wetlands	Atlantic Coastal Plain Depression Pondshore
Wetlands	Atlantic Coastal Plain Large Natural Lakeshore
Wetlands	Atlantic Coastal Plain Nonriverine Swamp and Wet Hardwood Forest - Taxodium/Nyssa Modifier
Wetlands	Atlantic Coastal Plain Nonriverine Swamp and Wet Hardwood Forest - Oak Dominated Modifier
Wetlands	Atlantic Coastal Plain Northern Basin Peat Swamp
Wetlands	Atlantic Coastal Plain Northern Basin Swamp and Wet Hardwood Forest
Wetlands	Atlantic Coastal Plain Northern Pondshore
Wetlands	Atlantic Coastal Plain Northern Wet Longleaf Pine Savanna and Flatwoods
Wetlands	Atlantic Coastal Plain Peatland Pocosin
Wetlands	Atlantic Coastal Plain Sandhill Seep
Wetlands	Atlantic Coastal Plain Small Blackwater River Floodplain Forest
Wetlands	Atlantic Coastal Plain Small Brownwater River Floodplain Forest
Wetlands	Atlantic Coastal Plain Southern Wet Pine Savanna and Flatwoods
Wetlands	Atlantic Coastal Plain Streamhead Seepage Swamp, Pocosin, and Baygall
Wetlands	Atlantic Coastal Plain Xeric River Dune
Wetlands	Central Appalachian Floodplain - Forest Modifier
Wetlands	Central Appalachian Floodplain - Herbaceous Modifier
Wetlands	Central Appalachian Riparian - Forest Modifier
Wetlands	Central Appalachian Riparian - Herbaceous Modifier
Wetlands	Central Florida Herbaceous Pondshore
Wetlands	Central Florida Herbaceous Seep
Wetlands	Central Florida Pine Flatwoods
Wetlands	Central Interior Highlands and Appalachian Sinkhole and Depression Pond
Wetlands	East Gulf Coastal Plain Interior Shrub Bog
Wetlands	East Gulf Coastal Plain Large River Floodplain Forest - Forest Modifier
Wetlands	East Gulf Coastal Plain Large River Floodplain Forest - Herbaceous Modifier
Wetlands	East Gulf Coastal Plain Near-Coast Pine Flatwoods - Offsite Hardwood Modifier
Wetlands	East Gulf Coastal Plain Near-Coast Pine Flatwoods - Open Understory Modifier
Wetlands	East Gulf Coastal Plain Near-Coast Pine Flatwoods - Scrub/Shrub Understory Modifier
Wetlands	East Gulf Coastal Plain Northern Depression Pondshore
Wetlands	East Gulf Coastal Plain Northern Seepage Swamp
Wetlands	East Gulf Coastal Plain Small Stream and River Floodplain Forest
Wetlands	East Gulf Coastal Plain Southern Depression Pondshore
Wetlands	East Gulf Coastal Plain Southern Loblolly-Hardwood Flatwoods
Wetlands	East Gulf Coastal Plain Treeless Savanna and Wet Prairie
Wetlands	Floridian Highlands Freshwater Marsh
Wetlands	Lower Mississippi River Bottomland and Floodplain Forest
Wetlands	Lower Mississippi River Bottomland Depressions - Forest Modifier
Wetlands	Lower Mississippi River Bottomland Depressions - Herbaceous Modifier
Wetlands	Mississippi River Low Floodplain (Bottomland) Forest
Wetlands	Mississippi River Riparian Forest
Wetlands	North-Central Appalachian Acidic Swamp
Wetlands	North-Central Appalachian Seepage Fen
Wetlands	North-Central Interior and Appalachian Rich Swamp
Wetlands	South Florida Bayhead Swamp
Wetlands	South-Central Interior Large Floodplain - Forest Modifier
Wetlands	South-Central Interior Large Floodplain - Herbaceous Modifier
Wetlands	South-Central Interior Small Stream and Riparian
Wetlands	South-Central Interior/Upper Coastal Plain Wet Flatwoods
Wetlands	Southern and Central Appalachian Bog and Fen
Wetlands	Southern Appalachian Seepage Wetland
Wetlands	Southern Coastal Plain Blackwater River Floodplain Forest
Wetlands	Southern Coastal Plain Herbaceous Seepage Bog

Wetlands	Southern Coastal Plain Hydric Hammock
Wetlands	Southern Coastal Plain Nonriverine Basin Swamp
Wetlands	Southern Coastal Plain Nonriverine Cypress Dome
Wetlands	Southern Coastal Plain Seepage Swamp and Baygall
Wetlands	Southern Coastal Plain Spring-run Stream Aquatic Vegetation
Wetlands	Southern Piedmont Large Floodplain Forest - Forest Modifier
Wetlands	Southern Piedmont Large Floodplain Forest - Herbaceous Modifier
Wetlands	Southern Piedmont Seepage Wetland
Wetlands	Southern Piedmont Small Floodplain and Riparian Forest
Wetlands	Southern Piedmont/Ridge and Valley Upland Depression Swamp
Wetlands	Unconsolidated Shore (Lake/River/Pond)
Wetlands	Western Highland Rim Seepage Fen

Selected Secondary Map Units within 60m of Primary Map Units:

Functional Group	Map Unit Name
Brackish Tidal Marsh & Wetland	Atlantic Coastal Plain Northern Sea-Level Fen
Brackish Tidal Marsh & Wetland	Atlantic Coastal Plain Southern Tidal Wooded Swamp
Brackish Tidal Marsh & Wetland	Atlantic Coastal Plain Indian River Lagoon Tidal Marsh
Brackish Tidal Marsh & Wetland	Atlantic Coastal Plain Embayed Region Tidal Salt and Brackish Marsh
Brackish Tidal Marsh & Wetland	Atlantic Coastal Plain Central Salt and Brackish Tidal Marsh
Brackish Tidal Marsh & Wetland	Atlantic Coastal Plain Northern Tidal Wooded Swamp
Brackish Tidal Marsh & Wetland	Atlantic Coastal Plain Northern Tidal Salt Marsh
Water	Open Water (Brackish/Salt)

CITATIONS: Christens, E., and J. R. Bider. 1987. Nesting activity and hatching success of the painted turtle (*CHRYSEMYS PICTA MARGINATA*) in southwestern Quebec. *Herpetologica* 43:55-65.

Christiansen, J. L., and E. O. Moll. 1973. Latitudinal reproductive variation in a single subspecies of painted turtle, *CHRYSEMYS PICTA BELLII*. *Herpetologica* 29:152-163.

Congdon, J. D., and R. E. Gatten, Jr. 1989. Movements and energetics of nesting *CHRYSEMYS PICTA*. *Herpetologica* 45:94-100.

DeGraaf, R. M., and D. D. Rudis. 1983. Amphibians and reptiles of New England. Habitats and natural history. Univ. Massachusetts Press. vii + 83 pp.

Ernst, C. H. 1971. *Chrysemys picta*. *Cat. Am. Amph. Rep.* 106.1-106.4.

Ernst, C. H. 1988. *CHRYSEMYS*. *Cat. Am. Amph. Rep.* 438:1-8.

Ernst, C. H., and R. W. Barbour. 1972. *Turtles of the United States*. Univ. Press of Kentucky, Lexington. x + 347 pp.

Ernst, C. H., R. W. Barbour, and J. E. Lovich. 1994. *Turtles of the United States and Canada*. Smithsonian Institution Press, Washington, D.C. xxxviii + 578 pp.

Frazer, N. B., J. W. Gibbons, and J. L. Greene. 1991. Growth, survivorship and longevity of painted turtles *Chrysemys picta* in a southwestern Michigan marsh. *Am. Midl. Nat.* 125:245-258.

Gibbons, J.W. 1968. Population structure and survivorship in the painted turtle, *Chrysemys picta*. *Copeia* 1968(2):260-268.

Iverson, J. B. 1991. Patterns of survivorship in turtles (order Testudines). *Canadian J. Zoology* 69:385-391.

Iverson, J. B., and G. R. Smith. 1993. Reproductive ecology of the painted turtle (*CHRYSEMYS PICTA*) in the Nebraska Sandhills and across its range. *Copeia* 1993:1-21.

Lindeman, P. V. 1991. Survivorship of overwintering hatchling painted turtles, *CHRYSEMYS PICTA*, in northern Idaho. *Can. Field-Nat.* 105:263-266.

Lindeman, P. V. 1996. Comparative life history of painted turtles (*CHRYSEMYS PICTA*) in two habitats in the inland Pacific Northwest. *Copeia* 1996:114-130.

Martof, B. S., W. M. Palmer, J. R. Bailey, and J. R. Harrison, III. 1980. *Amphibians and reptiles of the Carolinas and Virginia*. University of North Carolina Press, Chapel Hill, North Carolina. 264 pp.

Mitchell, J. C. 1988. Population ecology and life histories of the freshwater turtles *CHRYSEMYS PICTA* and *STERNOTHERUS ODORATUS* in an urban lake. *Herpetol. Monogr.* 2:40-61.

Moll, E. O. 1973. Latitudinal and intersubspecific variation in reproduction of the painted turtle, *CHRYSEMYS PICTA*. *Herpetologica* 29:307-318.

Packard, G. C., and M. J. Packard. 1995. A review of the adaptive strategy used by hatchling painted turtles to survive in the cold. *Herpetological Review* 26:8, 10-12.

Palmer, W. M., and A. L. Braswell. 1995. Reptiles of North Carolina. North Carolina State Museum of Natural Sciences, University of North Carolina Press, Chapel Hill, North Carolina.

Vogt, R. G. 1981. Natural history of amphibians and reptiles of Wisconsin. Milwaukee Public Museum. 205 pp.

For more information:: SE-GAP Analysis Project / BaSIC
127 David Clark Labs
Dept. of Biology, NCSU
Raleigh, NC 27695-7617
(919) 513-2853
www.basic.ncsu.edu/segap

Compiled: 15 September 2011

This data was compiled and/or developed
by the Southeast GAP Analysis Project at
The Biodiversity and Spatial Information
Center, North Carolina State University.