



SOUTHEAST GAP ANALYSIS PROJECT



Species Modeling Report

Green Anole

Anolis carolinensis

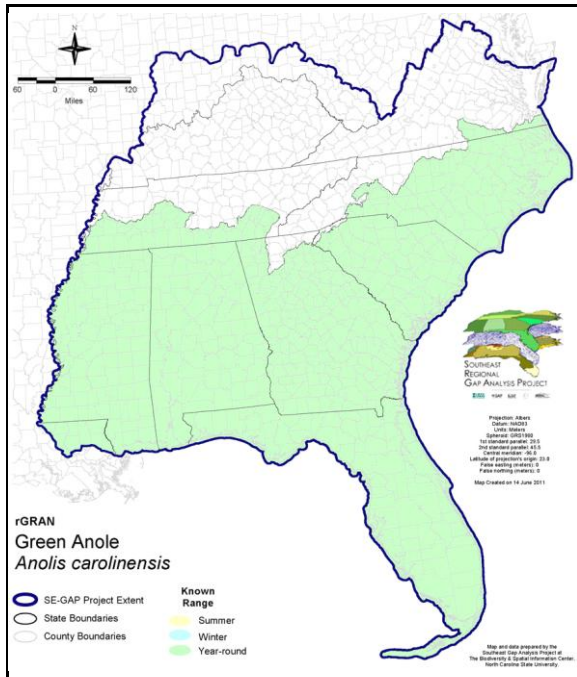
Taxa: Reptilian
 Order: Squamata
 Family: Polychrotidae

SE-GAP Spp Code: **rGRAN**

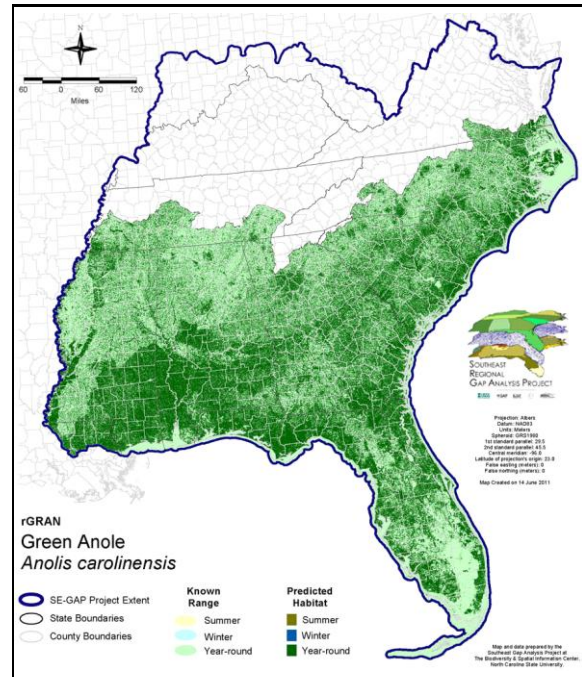
ITIS Species Code: 173885

NatureServe Element Code: ARACF01010

KNOWN RANGE:



PREDICTED HABITAT:



Range Map Link: http://www.basic.ncsu.edu/segap/datazip/maps/SE_Range_rGRAN.pdf

Predicted Habitat Map Link: http://www.basic.ncsu.edu/segap/datazip/maps/SE_Dist_rGRAN.pdf

GAP Online Tool Link: <http://www.gapservice.ncsu.edu/segap/segap/index2.php?species=rGRAN>

Data Download: http://www.basic.ncsu.edu/segap/datazip/region/vert/rGRAN_se00.zip

PROTECTION STATUS:

Reported on March 14, 2011

Federal Status: ---

State Status: MS (Non-game species in need of management)

NS Global Rank: G5

NS State Rank: AL (S5), AR (S5), FL (SNR), GA (S5), HI (SNA), LA (S5), MS (S5), NC (S5), OK (S4), SC (SNR), TN (S3), TX (S5)

SUMMARY OF PREDICTED HABITAT BY MANAGMENT AND GAP PROTECTION STATUS:

	US FWS		US Forest Service		Tenn. Valley Author.		US DOD/ACOE	
	ha	%	ha	%	ha	%	ha	%
Status 1	231,684.6	< 1	6,909.4	< 1	0.0	0	0.0	0
Status 2	209,026.4	< 1	79,058.3	< 1	0.0	0	654.5	< 1
Status 3	810.6	< 1	1,103,627.2	3	18,204.6	< 1	578,346.4	1
Status 4	1,298.7	< 1	< 0.1	< 1	0.0	0	0.0	0
Total	442,820.3	1	1,189,595.0	3	18,204.6	< 1	579,000.9	1
	US Dept. of Energy		US Nat. Park Service		NOAA		Other Federal Lands	
	ha	%	ha	%	ha	%	ha	%
Status 1	0.0	0	43,683.7	< 1	84.1	< 1	13,717.3	< 1
Status 2	0.0	0	13,230.8	< 1	8,540.5	< 1	81.4	< 1
Status 3	72,089.1	< 1	180,532.0	< 1	0.0	0	5,803.4	< 1
Status 4	0.0	0	1.0	3	0.0	0	0.0	0
Total	72,089.1	< 1	237,448.0	< 1	8,624.5	< 1	19,602.0	< 1
	Native Am. Reserv.		State Park/Hist. Park		State WMA/Gameland		State Forest	
	ha	%	ha	%	ha	%	ha	%
Status 1	0.0	0	782.3	< 1	49.0	< 1	0.0	0
Status 2	0.0	0	2,464.6	< 1	477,013.5	1	0.0	0
Status 3	3,641.0	< 1	525,288.7	1	151,892.3	< 1	366,276.3	< 1
Status 4	0.0	0	< 0.1	< 1	86,099.3	< 1	49.0	< 1
Total	3,641.0	< 1	528,535.6	1	715,054.1	2	366,325.3	< 1
	State Coastal Reserve		ST Nat.Area/Preserve		Other State Lands		Private Cons. Easemt.	
	ha	%	ha	%	ha	%	ha	%
Status 1	0.0	0	5,534.2	< 1	0.0	0	0.0	0
Status 2	14,903.3	< 1	49,443.1	< 1	0.0	0	2,465.8	< 1
Status 3	0.0	0	21,082.0	< 1	26,884.2	< 1	113,214.7	< 1
Status 4	0.0	0	0.6	< 1	2,393.6	< 1	0.0	0
Total	14,903.3	< 1	76,059.9	< 1	29,277.7	< 1	115,680.5	< 1
	Private Land - No Res.		Water		Overall Total			
	ha	%	ha	%	ha	%		
Status 1	0.0	0	0.0	0	302,444.4	< 1		
Status 2	376.7	< 1	0.0	4	857,259.0	2		
Status 3	2,102.9	< 1	1.1	< 1	3,169,796.3	10		
Status 4	37,253,728.1	87	38,665.4	< 1	37,467,036.9	87		
Total	37,256,207.7	87	38,666.6	< 1	41,796,536.6	100		

GAP Status 1: An area having permanent protection from conversion of natural land cover and a mandated management plan in operation to maintain a natural state within which disturbance events (of natural type, frequency, and intensity) are allowed to proceed without interference or are mimicked through management.

GAP Status 2: An area having permanent protection from conversion of natural land cover and a mandated management plan in operation to maintain a primarily natural state, but which may receive use or management practices that degrade the quality of existing natural communities.

GAP Status 3: An area having permanent protection from conversion of natural land cover for the majority of the area, but subject to extractive uses of either a broad, low-intensity type or localized intense type. It also confers protection to federally listed endangered and threatened species throughout the area.

GAP Status 4: Lack of irrevocable easement or mandate to prevent conversion of natural habitat types to anthropogenic habitat types. Allows for intensive use throughout the tract. Also includes those tracts for which the existence of such restrictions or sufficient information to establish a higher status is unknown.

PREDICTED HABITAT MODEL(S):

Year-round Model:

Habitat Description: This species is arboreal, selecting moist habitats with trees, shrubs, and vine tangles. In residential areas, the Green Anole may be found on fences, rock ledges, homes, bridges, and other man-made structures. Favors mesic, early seral stages and open, brushy, vine tangles. M. Rubino, 25Jan05.

Selected Map Units:

Functional Group	Map Unit Name
Anthropogenic	Deciduous Plantations
Anthropogenic	Developed Open Space
Anthropogenic	Evergreen Plantations
Anthropogenic	Low Intensity Developed
Anthropogenic	Medium Intensity Developed
Anthropogenic	Successional Shrub/Scrub (Clear Cut)
Anthropogenic	Successional Shrub/Scrub (Other)
Anthropogenic	Successional Shrub/Scrub (Utility Swath)
Forest/Woodland	Atlantic Coastal Plain Central Maritime Forest
Forest/Woodland	Atlantic Coastal Plain Fall-Line Sandhills Longleaf Pine Woodland - Loblolly Modifier
Forest/Woodland	Atlantic Coastal Plain Fall-line Sandhills Longleaf Pine Woodland - Offsite Hardwood Modifier
Forest/Woodland	Atlantic Coastal Plain Fall-line Sandhills Longleaf Pine Woodland - Open Understory Modifier
Forest/Woodland	Atlantic Coastal Plain Fall-line Sandhills Longleaf Pine Woodland - Scrub/Shrub Understory Modifier
Forest/Woodland	Atlantic Coastal Plain Mesic Hardwood and Mixed Forest
Forest/Woodland	Atlantic Coastal Plain Northern Maritime Forest
Forest/Woodland	Atlantic Coastal Plain Northern Mixed Oak-Heath Forest
Forest/Woodland	Atlantic Coastal Plain Southern Maritime Forest
Forest/Woodland	Atlantic Coastal Plain Upland Longleaf Pine Woodland
Forest/Woodland	East Gulf Coastal Plain Interior Shortleaf Pine-Oak Forest - Pine Modifier
Forest/Woodland	East Gulf Coastal Plain Interior Upland Longleaf Pine Woodland - Loblolly Modifier
Forest/Woodland	East Gulf Coastal Plain Interior Upland Longleaf Pine Woodland - Offsite Hardwood Modifier
Forest/Woodland	East Gulf Coastal Plain Interior Upland Longleaf Pine Woodland - Open Understory Modifier
Forest/Woodland	East Gulf Coastal Plain Interior Upland Longleaf Pine Woodland - Scrub/Shrub Modifier
Forest/Woodland	East Gulf Coastal Plain Limestone Forest
Forest/Woodland	East Gulf Coastal Plain Maritime Forest
Forest/Woodland	East Gulf Coastal Plain Northern Dry Upland Hardwood Forest - Offsite Pine Modifier
Forest/Woodland	East Gulf Coastal Plain Northern Loess Bluff Forest
Forest/Woodland	East Gulf Coastal Plain Northern Loess Plain Oak-Hickory Upland - Hardwood Modifier
Forest/Woodland	East Gulf Coastal Plain Northern Loess Plain Oak-Hickory Upland - Juniper Modifier
Forest/Woodland	East Gulf Coastal Plain Northern Mesic Hardwood Forest
Forest/Woodland	East Gulf Coastal Plain Southern Loess Bluff Forest
Forest/Woodland	East Gulf Coastal Plain Southern Mesic Slope Forest
Forest/Woodland	Mississippi Delta Maritime Forest
Forest/Woodland	South Florida Pine Rockland
Forest/Woodland	South-Central Interior Mesophytic Forest
Forest/Woodland	Southeast Florida Coastal Strand and Maritime Hammock
Forest/Woodland	Southeastern Interior Longleaf Pine Woodland
Forest/Woodland	Southern Coastal Plain Oak Dome and Hammock
Forest/Woodland	Southern Piedmont Dry Oak-(Pine) Forest - Loblolly Pine Modifier
Forest/Woodland	Southern Piedmont Mafic Hardpan Woodland
Forest/Woodland	Southern Piedmont Mesic Forest
Forest/Woodland	Southwest Florida Coastal Strand and Maritime Hammock
Wetlands	Atlantic Coastal Plain Blackwater Stream Floodplain Forest - Forest Modifier
Wetlands	Atlantic Coastal Plain Brownwater Stream Floodplain Forest
Wetlands	Atlantic Coastal Plain Clay-Based Carolina Bay Forested Wetland
Wetlands	Atlantic Coastal Plain Nonriverine Swamp and Wet Hardwood Forest - Taxodium/Nyssa Modifier

Wetlands	Atlantic Coastal Plain Nonriverine Swamp and Wet Hardwood Forest - Oak Dominated Modifier
Wetlands	Atlantic Coastal Plain Northern Basin Peat Swamp
Wetlands	Atlantic Coastal Plain Northern Basin Swamp and Wet Hardwood Forest
Wetlands	Atlantic Coastal Plain Northern Wet Longleaf Pine Savanna and Flatwoods
Wetlands	Atlantic Coastal Plain Peatland Pocosin
Wetlands	Atlantic Coastal Plain Small Blackwater River Floodplain Forest
Wetlands	Atlantic Coastal Plain Small Brownwater River Floodplain Forest
Wetlands	Atlantic Coastal Plain Southern Wet Pine Savanna and Flatwoods
Wetlands	Atlantic Coastal Plain Streamhead Seepage Swamp, Pocosin, and Baygall
Wetlands	Central Florida Pine Flatwoods
Wetlands	East Gulf Coastal Plain Large River Floodplain Forest - Forest Modifier
Wetlands	East Gulf Coastal Plain Near-Coast Pine Flatwoods - Offsite Hardwood Modifier
Wetlands	East Gulf Coastal Plain Near-Coast Pine Flatwoods - Open Understory Modifier
Wetlands	East Gulf Coastal Plain Near-Coast Pine Flatwoods - Scrub/Shrub Understory Modifier
Wetlands	East Gulf Coastal Plain Northern Seepage Swamp
Wetlands	East Gulf Coastal Plain Small Stream and River Floodplain Forest
Wetlands	East Gulf Coastal Plain Southern Loblolly-Hardwood Flatwoods
Wetlands	East Gulf Coastal Plain Treeless Savanna and Wet Prairie
Wetlands	Lower Mississippi River Bottomland and Floodplain Forest
Wetlands	Lower Mississippi River Bottomland Depressions - Forest Modifier
Wetlands	Mississippi River Low Floodplain (Bottomland) Forest
Wetlands	Mississippi River Riparian Forest
Wetlands	South Florida Bayhead Swamp
Wetlands	South Florida Cypress Dome
Wetlands	South Florida Dwarf Cypress Savanna
Wetlands	South Florida Hardwood Hammock
Wetlands	South Florida Pine Flatwoods
Wetlands	South Florida Pond-Apple/Popash Slough
Wetlands	South Florida Wet Marl Prairie
Wetlands	South Florida Willow Head
Wetlands	South-Central Interior Large Floodplain - Forest Modifier
Wetlands	South-Central Interior Small Stream and Riparian
Wetlands	South-Central Interior/Upper Coastal Plain Wet Flatwoods
Wetlands	Southern Coastal Plain Blackwater River Floodplain Forest
Wetlands	Southern Coastal Plain Hydric Hammock
Wetlands	Southern Coastal Plain Nonriverine Basin Swamp
Wetlands	Southern Coastal Plain Nonriverine Cypress Dome
Wetlands	Southern Coastal Plain Seepage Swamp and Baygall
Wetlands	Southern Piedmont Large Floodplain Forest - Forest Modifier
Wetlands	Southern Piedmont Seepage Wetland
Wetlands	Southern Piedmont Small Floodplain and Riparian Forest
Wetlands	Southern Piedmont/Ridge and Valley Upland Depression Swamp

CITATIONS: Andrews, R. M. 1985. Oviposition frequency of ANOLIS CAROLINENSIS. *Copeia* 1985:259-262.

Ashton, R. E., Jr., and P. S. Ashton. 1985. Handbook of reptiles and amphibians of Florida. Part two. Lizards, turtles & crocodilians. Windward Pub., Inc., Miami. 191 pp.

Ashton, R. E., Jr., and P. S. Ashton. 1991. Handbook of reptiles and amphibians of Florida. Part two. Lizards, turtles & crocodilians. Revised second edition. Windward Pub., Inc., Miami. 191 pp.

Behler, J. L., and F. W. King. 1979. The Audubon Society field guide to North American reptiles and amphibians. Alfred A. Knopf, New York. 719 pp.

Burnell, K. L., and S. B. Hedges. 1990. Relationships of West Indian ANOLIS (Sauria:Iguanidae):an approach using slow-evolving protein loci. *Caribbean J. Sci.* 26:7-30.

Cannatella, D. C., and K. De Queiroz. 1989. Phylogenetic systematics of the anoles:is a new taxonomy warranted? *Syst. Zool.* 38:57-69.

Conant, R. and J. T. Collins. 1991. A field guide to reptiles and amphibians:eastern and central North America. Third edition. Houghton Mifflin Co., Boston, Massachusetts. 450 pp.

- Fitch, H. S. 1970. Reproductive cycles of lizards and snakes. Univ. Kansas Museum Natural History Miscellaneous Publication 52:1-247.
- Guyer, C., and J. M. Savage. 1986. Cladistic relationships among anoles (Sauria:Iguanidae). Systematic Zoology 35:509-531.
- Guyer, C., and J. M. Savage. 1992. Anole systematics revisited. Syst. Biol. 41:89-110.
- King, F. W. 1966. Competition between two south Florida lizards of the genus *Anolis*. Ph.D. thesis, Univ. Miami. 97 pp.
- Martof, B. S., W. M. Palmer, J. R. Bailey, and J. R. Harrison, III. 1980. Amphibians and reptiles of the Carolinas and Virginia. University of North Carolina Press, Chapel Hill, North Carolina. 264 pp.
- McCoid, M. J. 1993. The "new" herpetofauna of Guam, Mariana Islands. Herpetol. Rev. 24:16-17.
- McCoid, M. J. 1994. Eggs, hatchling sizes, and oviposition sites of lizards on Guam, Mariana Islands. Herpetol. Rev. 25:98-100.
- Mount, R. H. 1975. The Reptiles and Amphibians of Alabama. Auburn University Agricultural Experiment Station, Auburn, Alabama. vii + 347 pp.
- Palmer, W. M., and A. L. Braswell. 1995. Reptiles of North Carolina. North Carolina State Museum of Natural Sciences, University of North Carolina Press, Chapel Hill, North Carolina.
- Ruby, D. E. 1984. Male breeding success and differential access to females in *ANOLIS CAROLINENSIS*. Herpetologica 40:272-280.
- Schwartz, A., and R. W. Henderson. 1988. West Indian amphibians and reptiles:a check-list. Milwaukee Pub. Mus., Contrib. Biological Geology No. 74:1-264.
- Williams, E. E. 1989. A critique of Guyer and Savage (1986):cladistic relationships among anoles (Sauria:Iguanidae):are the data available to reclassify the anoles? Pages 433-478 in C. A. Woods, ed. Biogeography of the West Indies, Sandhill Crane Press, G

For more information:: SE-GAP Analysis Project / BaSIC
127 David Clark Labs
Dept. of Biology, NCSU
Raleigh, NC 27695-7617
(919) 513-2853
www.basic.ncsu.edu/segap

Compiled: 15 September 2011

This data was compiled and/or developed
by the Southeast GAP Analysis Project at
The Biodiversity and Spatial Information
Center, North Carolina State University.