



SOUTHEAST GAP ANALYSIS PROJECT



Species Modeling Report

Florida Scrub Lizard

Sceloporus woodi

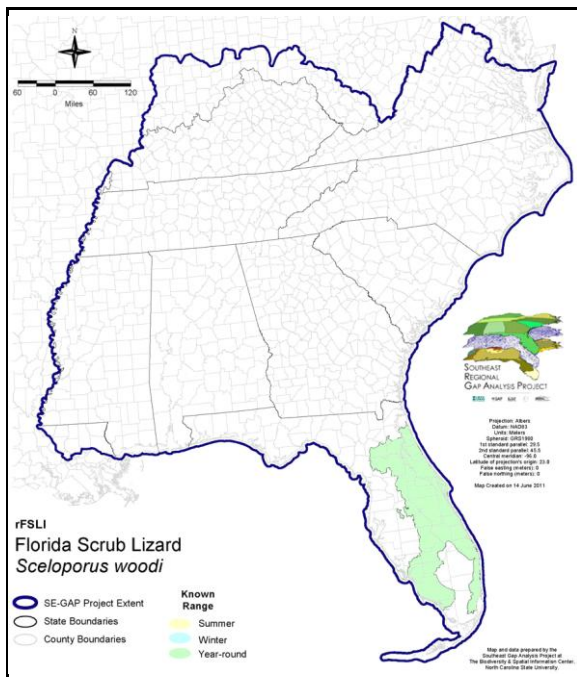
Taxa: Reptilian
Order: Squamata
Family: Phrynosomatidae

SE-GAP Spp Code: **rFSLI**

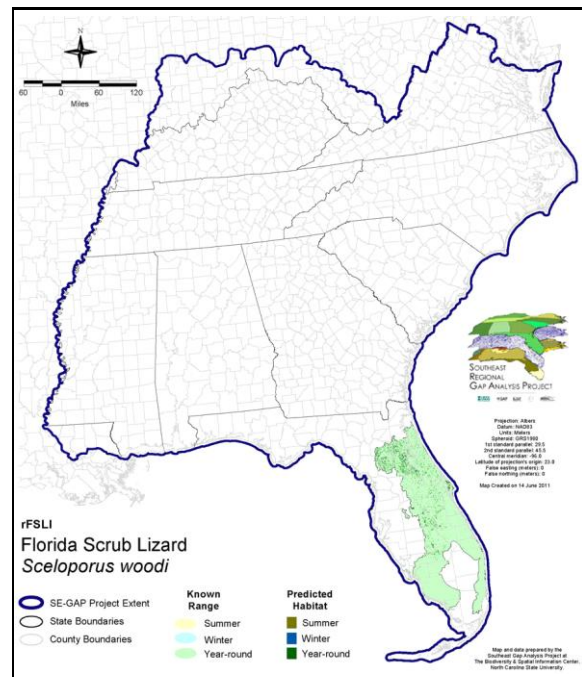
ITIS Species Code: 173882

NatureServe Element Code: ARACF14160

KNOWN RANGE:



PREDICTED HABITAT:



Range Map Link: http://www.basic.ncsu.edu/segap/datazip/maps/SE_Range_rFSLI.pdf

Predicted Habitat Map Link: http://www.basic.ncsu.edu/segap/datazip/maps/SE_Dist_rFSLI.pdf

GAP Online Tool Link: <http://www.gapservice.ncsu.edu/segap/segap/index2.php?species=rFSLI>

Data Download: http://www.basic.ncsu.edu/segap/datazip/region/vert/rFSLI_se00.zip

PROTECTION STATUS:

Reported on March 14, 2011

Federal Status: ---
State Status: ---
NS Global Rank: G3
NS State Rank: FL (S3)

SUMMARY OF PREDICTED HABITAT BY MANAGMENT AND GAP PROTECTION STATUS:

	US FWS		US Forest Service		Tenn. Valley Author.		US DOD/ACOE	
	ha	%	ha	%	ha	%	ha	%
Status 1	208.4	< 1	0.0	0	0.0	0	0.0	0
Status 2	0.0	0	2,944.9	< 1	0.0	0	0.0	0
Status 3	0.0	0	38,132.6	11	0.0	0	9,099.7	3
Status 4	0.0	0	0.0	0	0.0	0	0.0	0
Total	208.4	< 1	41,077.4	12	0.0	0	9,099.7	3
	US Dept. of Energy		US Nat. Park Service		NOAA		Other Federal Lands	
	ha	%	ha	%	ha	%	ha	%
Status 1	0.0	0	78.8	< 1	0.0	0	9,231.5	3
Status 2	0.0	0	2,264.0	< 1	44.6	< 1	0.0	0
Status 3	0.0	0	5.2	< 1	0.0	0	0.0	0
Status 4	0.0	0	0.0	0	0.0	0	0.0	0
Total	0.0	0	2,348.1	< 1	44.6	< 1	9,231.5	3
	Native Am. Reserv.		State Park/Hist. Park		State WMA/Gameland		State Forest	
	ha	%	ha	%	ha	%	ha	%
Status 1	0.0	0	0.0	0	0.0	0	0.0	0
Status 2	0.0	0	47.1	< 1	9,675.2	3	0.0	0
Status 3	0.0	0	15,225.4	5	130.5	< 1	7,482.7	2
Status 4	0.0	0	0.0	0	0.0	0	0.0	0
Total	0.0	0	15,272.5	5	9,805.7	3	7,482.7	2
	State Coastal Reserve		ST Nat.Area/Preserve		Other State Lands		Private Cons. Easemt.	
	ha	%	ha	%	ha	%	ha	%
Status 1	0.0	0	0.0	0	0.0	0	0.0	0
Status 2	0.0	0	0.0	0	0.0	0	311.5	< 1
Status 3	0.0	0	1,890.2	< 1	1,813.1	< 1	4,801.1	1
Status 4	0.0	0	0.0	0	42.8	< 1	0.0	0
Total	0.0	0	1,890.2	< 1	1,855.8	< 1	5,112.6	2
	Private Land - No Res.		Water		Overall Total			
	ha	%	ha	%	ha	%	ha	%
Status 1	0.0	0	0.0	0	9,518.7 3			
Status 2	0.0	0	0.0	0	15,287.2 5			
Status 3	0.0	0	0.0	0	78,580.4 35			
Status 4	191,032.5	57	297.2	< 1	191,372.4 57			
Total	191,032.5	57	297.2	< 1	294,758.7 100			

GAP Status 1: An area having permanent protection from conversion of natural land cover and a mandated management plan in operation to maintain a natural state within which disturbance events (of natural type, frequency, and intensity) are allowed to proceed without interference or are mimicked through management.

GAP Status 2: An area having permanent protection from conversion of natural land cover and a mandated management plan in operation to maintain a primarily natural state, but which may receive use or management practices that degrade the quality of existing natural communities.

GAP Status 3: An area having permanent protection from conversion of natural land cover for the majority of the area, but subject to extractive uses of either a broad, low-intensity type or localized intense type. It also confers protection to federally listed endangered and threatened species throughout the area.

GAP Status 4: Lack of irrevocable easement or mandate to prevent conversion of natural habitat types to anthropogenic habitat types. Allows for intensive use throughout the tract. Also includes those tracts for which the existence of such restrictions or sufficient information to establish a higher status is unknown.

PREDICTED HABITAT MODEL(S):

Year-round Model:

Habitat Description: Prefers xeric, well-drained, open, sandy edges in sand pine scrub with dense sand pine canopy and scrub oak understory. Also prefers sandhill habitats characterized by longleaf pine and turkey oak, rosemary, and wiregrass. They are also associated with beach-dune scrub (Wilson 1995). It is most abundant on the Lake Wales Ridge and in scrublands of Lake and Marion counties (Bartlett and Bartlett 1999). M. Rubino, 9mar05.

Selected Map Units:

Functional Group	Map Unit Name
Coastal Dune & Freshwater Wetland	Atlantic Coastal Plain Southern Dune and Maritime Grassland
Coastal Dune & Freshwater Wetland	Southwest Florida Dune and Coastal Grassland
Forest/Woodland	Atlantic Coastal Plain Upland Longleaf Pine Woodland
Forest/Woodland	Florida Longleaf Pine Sandhill - Open Understory Modifier
Forest/Woodland	Florida Longleaf Pine Sandhill - Scrub/Shrub Understory Modifier
Forest/Woodland	Florida Peninsula Inland Scrub
Forest/Woodland	Southeast Florida Coastal Strand and Maritime Hammock
Forest/Woodland	Southwest Florida Coastal Strand and Maritime Hammock
Wetlands	Central Florida Pine Flatwoods

CITATIONS: Bartlett, R.D. and P.P. Bartlett. 1999. Field guide to Florida reptiles and amphibians. Gulf Publishing Co, Houston, TX. 280 p.
Wilson, L. A. 1995. The Land Manager's Guide to the amphibians and reptiles of the South. Chapel Hill, NC: The Nature Conservancy.

For more information:: SE-GAP Analysis Project / BaSIC
127 David Clark Labs
Dept. of Biology, NCSU
Raleigh, NC 27695-7617
(919) 513-2853
www.basic.ncsu.edu/segap

Compiled: 15 September 2011

This data was compiled and/or developed by the Southeast GAP Analysis Project at The Biodiversity and Spatial Information Center, North Carolina State University.