



# SOUTHEAST GAP ANALYSIS PROJECT



## Species Modeling Report

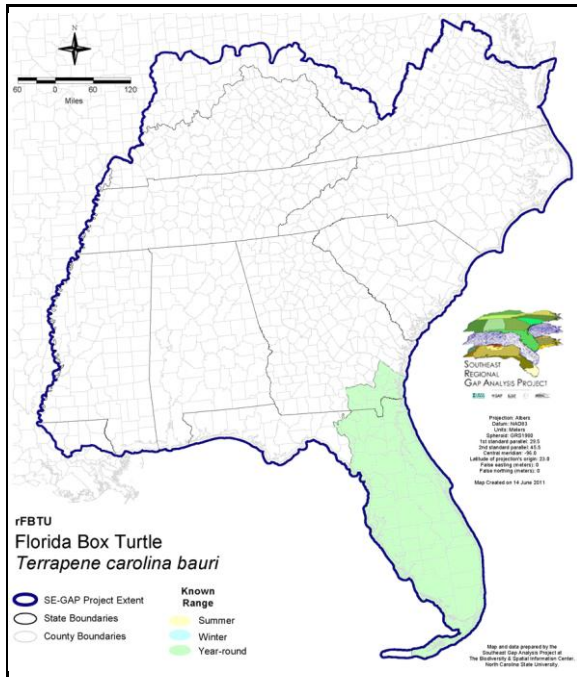
### Florida Box Turtle

*Terrapene carolina bauri*

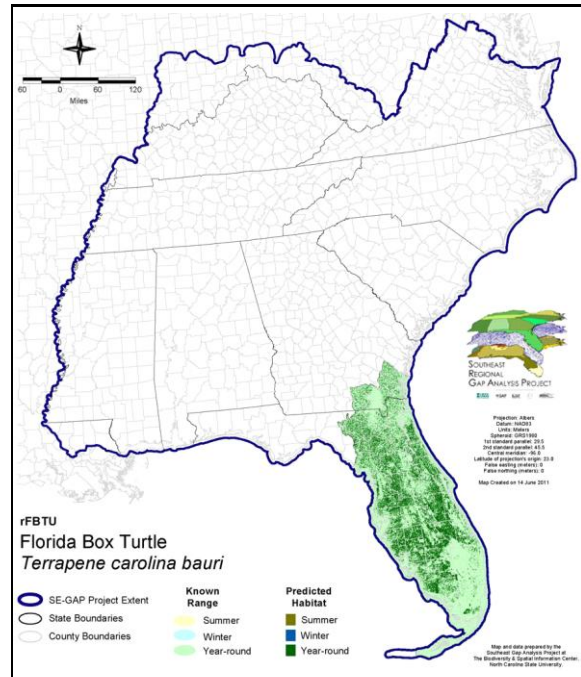
Taxa: Reptilian  
 Order: Cryptodeira  
 Family: Emydidae

SE-GAP Spp Code: **rFBTU**  
 ITIS Species Code: 208596  
 NatureServe Element Code: ARAAD08011

#### KNOWN RANGE:



#### PREDICTED HABITAT:



Range Map Link: [http://www.basic.ncsu.edu/segap/datazip/maps/SE\\_Range\\_rFBTU.pdf](http://www.basic.ncsu.edu/segap/datazip/maps/SE_Range_rFBTU.pdf)

Predicted Habitat Map Link: [http://www.basic.ncsu.edu/segap/datazip/maps/SE\\_Dist\\_rFBTU.pdf](http://www.basic.ncsu.edu/segap/datazip/maps/SE_Dist_rFBTU.pdf)

GAP Online Tool Link: <http://www.gapservice.ncsu.edu/segap/segap/index2.php?species=rFBTU>

Data Download: [http://www.basic.ncsu.edu/segap/datazip/region/vert/rFBTU\\_se00.zip](http://www.basic.ncsu.edu/segap/datazip/region/vert/rFBTU_se00.zip)

#### PROTECTION STATUS:

Reported on March 14, 2011

Federal Status: ---  
 State Status: ---  
 NS Global Rank: G5T4  
 NS State Rank: FL (SNR)

**SUMMARY OF PREDICTED HABITAT BY MANAGMENT AND GAP PROTECTION STATUS:**

	US FWS		US Forest Service		Tenn. Valley Author.		US DOD/ACOE	
	ha	%	ha	%	ha	%	ha	%
Status 1	17,784.6	< 1	0.0	0	0.0	0	0.0	0
Status 2	4,468.6	< 1	8,216.1	< 1	0.0	0	0.0	0
Status 3	0.9	< 1	34,743.7	< 1	0.0	0	20,533.5	< 1
Status 4	1.0	< 1	0.0	0	0.0	0	0.0	0
Total	22,255.1	< 1	42,959.8	1	0.0	0	20,533.5	< 1
	US Dept. of Energy		US Nat. Park Service		NOAA		Other Federal Lands	
	ha	%	ha	%	ha	%	ha	%
Status 1	0.0	0	24,430.4	< 1	0.0	0	5,386.2	< 1
Status 2	0.0	0	2,757.5	< 1	762.2	< 1	5.9	< 1
Status 3	0.0	0	71,521.2	2	0.0	0	0.0	0
Status 4	0.0	0	0.0	0	0.0	0	0.0	0
Total	0.0	0	98,709.1	2	762.2	< 1	5,392.1	< 1
	Native Am. Reserv.		State Park/Hist. Park		State WMA/Gameland		State Forest	
	ha	%	ha	%	ha	%	ha	%
Status 1	0.0	0	0.0	0	0.0	0	0.0	0
Status 2	0.0	0	294.8	< 1	108,377.5	3	0.0	0
Status 3	0.0	0	302,811.8	7	188.1	< 1	95,918.5	2
Status 4	0.0	0	0.0	0	< 0.1	< 1	0.0	0
Total	0.0	0	303,106.5	7	108,565.7	3	95,918.5	2
	State Coastal Reserve		ST Nat.Area/Preserve		Other State Lands		Private Cons. Easemt.	
	ha	%	ha	%	ha	%	ha	%
Status 1	0.0	0	0.0	0	0.0	0	0.0	0
Status 2	0.0	0	1,386.6	< 1	0.0	0	1,694.3	< 1
Status 3	0.0	0	12,213.0	< 1	9,276.9	< 1	66,942.7	2
Status 4	0.0	0	0.0	0	281.3	< 1	< 0.1	< 1
Total	0.0	0	13,599.6	< 1	9,558.3	< 1	68,637.1	2
	Private Land - No Res.		Water		Overall Total			
	ha	%	ha	%	ha	%	ha	%
Status 1	0.0	0	0.0	0	47,601.3 1			
Status 2	0.0	0	0.0	0	127,963.4 3			
Status 3	233.4	< 1	0.0	0	614,383.7 16			
Status 4	3,230,277.5	79	13,002.7	< 1	3,243,561.8 80			
Total	3,230,510.9	79	13,002.7	< 1	4,033,510.0 100			

GAP Status 1: An area having permanent protection from conversion of natural land cover and a mandated management plan in operation to maintain a natural state within which disturbance events (of natural type, frequency, and intensity) are allowed to proceed without interference or are mimicked through management.

GAP Status 2: An area having permanent protection from conversion of natural land cover and a mandated management plan in operation to maintain a primarily natural state, but which may receive use or management practices that degrade the quality of existing natural communities.

GAP Status 3: An area having permanent protection from conversion of natural land cover for the majority of the area, but subject to extractive uses of either a broad, low-intensity type or localized intense type. It also confers protection to federally listed endangered and threatened species throughout the area.

GAP Status 4: Lack of irrevocable easement or mandate to prevent conversion of natural habitat types to anthropogenic habitat types. Allows for intensive use throughout the tract. Also includes those tracts for which the existence of such restrictions or sufficient information to establish a higher status is unknown.

## PREDICTED HABITAT MODEL(S):

### Year-round Model:

Habitat Description: Florida box turtles are primarily terrestrial and can be found in open mixed woodlands, pasture edges, pine flatwoods, hammocks, marshy meadows, and pine rocklands (Bartlett & Bartlett 1999, FL-GAP 2003). Amy Silvano 8jul05

very little information regarding this species.

Ecosystem classifiers: Pasture, Grassland, Hardwood, pine rocklands, Hammocks, Depressional, flatwoods, riparian. Amy Silvano 8jul05

### Selected Map Units:

Functional Group	Map Unit Name
Anthropogenic	Pasture/Hay
Anthropogenic	Successional Grassland/Herbaceous
Anthropogenic	Successional Grassland/Herbaceous (Other)
Anthropogenic	Successional Grassland/Herbaceous (Utility Swath)
Forest/Woodland	Northern Atlantic Coastal Plain Dry Hardwood Forest
Forest/Woodland	South Florida Pine Rockland
Forest/Woodland	Southern Coastal Plain Dry Upland Hardwood Forest
Forest/Woodland	Southern Coastal Plain Oak Dome and Hammock
Wetlands	South Florida Dwarf Cypress Savanna
Wetlands	South Florida Freshwater Slough and Gator Hole
Wetlands	South Florida Hardwood Hammock
Wetlands	South Florida Pine Flatwoods
Wetlands	South Florida Wet Marl Prairie
Wetlands	Southern Coastal Plain Blackwater River Floodplain Forest
Wetlands	Southern Coastal Plain Hydric Hammock
Wetlands	Southern Coastal Plain Nonriverine Basin Swamp
Wetlands	Southern Coastal Plain Seepage Swamp and Baygall

**CITATIONS:** Dodd, C.K. 2001. North American Box Turtles: A Natural History. University of Oklahoma Press, Norman, OK. 231p.

For more information:: SE-GAP Analysis Project / BaSIC  
127 David Clark Labs  
Dept. of Biology, NCSU  
Raleigh, NC 27695-7617  
(919) 513-2853  
[www.basic.ncsu.edu/segap](http://www.basic.ncsu.edu/segap)

Compiled: 15 September 2011

This data was compiled and/or developed by the Southeast GAP Analysis Project at The Biodiversity and Spatial Information Center, North Carolina State University.