



SOUTHEAST GAP ANALYSIS PROJECT



Species Modeling Report

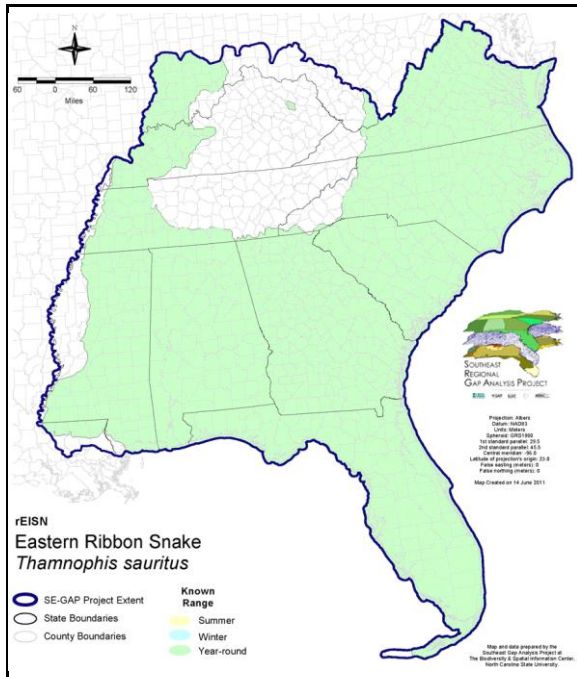
Eastern Ribbon Snake

Thamnophis sauritus

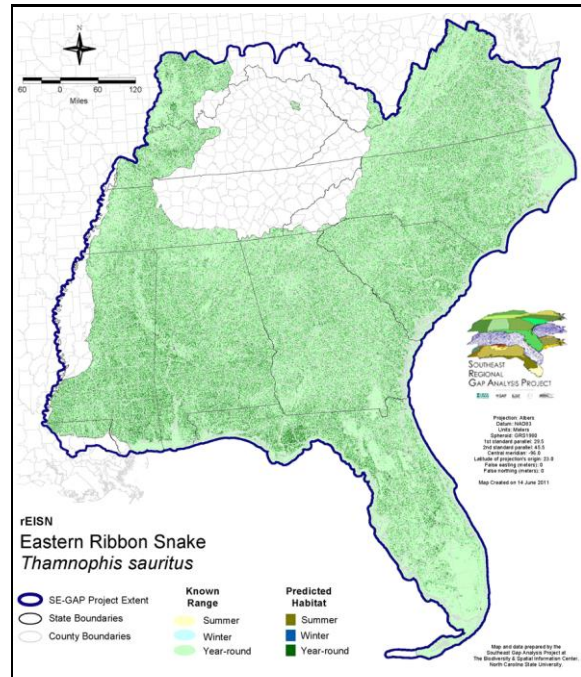
Taxa: Reptilian
 Order: Squamata
 Family: Colubridae

SE-GAP Spp Code: **rEISN**
 ITIS Species Code: 174134
 NatureServe Element Code: ARADB36120

KNOWN RANGE:



PREDICTED HABITAT:



Range Map Link: http://www.basic.ncsu.edu/segap/datazip/maps/SE_Range_rEISN.pdf

Predicted Habitat Map Link: http://www.basic.ncsu.edu/segap/datazip/maps/SE_Dist_rEISN.pdf

GAP Online Tool Link: <http://www.gapservice.ncsu.edu/segap/segap/index2.php?species=rEISN>

Data Download: http://www.basic.ncsu.edu/segap/datazip/region/vert/rEISN_se00.zip

PROTECTION STATUS:

Reported on March 14, 2011

Federal Status: ---

State Status: CT (SC), IL (LT), KY (N), MA (- WL), ME (SC), MS (Non-game species in need of management), NJ (S), NY (GN), RI (Concern), WI (END), NS (Threatened), ON (SC), QC (Susceptible)

NS Global Rank: G5

NS State Rank: AL (S5), CT (S3S4), DC (S4), DE (S2), FL (S5), GA (S5), IL (S1), IN (SNR), KY (S3), LA (S4), MA (S4S5), MD (S5), ME (S3), MI (S5), MS (S5), NC (S4), NH (S5), NJ (S5), NY (S4), OH (SNR), PA (S3), RI (S3), SC (SNR), TN (S4S5), VA (S5), VT (S2), WI (S1), WV (S2), NS (S2S3), ON (S3), QC (S1)

SUMMARY OF PREDICTED HABITAT BY MANAGMENT AND GAP PROTECTION STATUS:

| | US FWS | | US Forest Service | | Tenn. Valley Author. | | US DOD/ACOE | |
|----------|------------------------|-----|-----------------------|-----|----------------------|-----|-----------------------|-----|
| | ha | % | ha | % | ha | % | ha | % |
| Status 1 | 19,189.3 | < 1 | 1,699.7 | < 1 | 0.0 | 0 | 0.0 | 0 |
| Status 2 | 36,043.5 | < 1 | 48,226.6 | < 1 | 0.0 | 0 | 2,193.8 | < 1 |
| Status 3 | 1,255.7 | < 1 | 493,619.0 | 3 | 14,640.5 | < 1 | 182,066.6 | 1 |
| Status 4 | 35.0 | < 1 | 0.0 | 0 | 0.0 | 0 | 7.1 | < 1 |
| Total | 56,523.4 | < 1 | 543,545.4 | 3 | 14,640.5 | < 1 | 184,267.5 | 1 |
| | US Dept. of Energy | | US Nat. Park Service | | NOAA | | Other Federal Lands | |
| | ha | % | ha | % | ha | % | ha | % |
| Status 1 | 0.0 | 0 | 4,606.9 | < 1 | 8.5 | < 1 | 3,789.5 | < 1 |
| Status 2 | 0.0 | 0 | 1,886.9 | < 1 | 1,076.5 | < 1 | 9.1 | < 1 |
| Status 3 | 16,907.9 | < 1 | 33,139.0 | < 1 | 0.0 | 0 | 65.5 | < 1 |
| Status 4 | 0.0 | 0 | 0.0 | 0 | 0.0 | 0 | 0.0 | 0 |
| Total | 16,907.9 | < 1 | 39,632.9 | < 1 | 1,085.0 | < 1 | 3,864.2 | < 1 |
| | Native Am. Reserv. | | State Park/Hist. Park | | State WMA/Gameland | | State Forest | |
| | ha | % | ha | % | ha | % | ha | % |
| Status 1 | 0.0 | 0 | 366.6 | < 1 | 23.4 | < 1 | 0.0 | 0 |
| Status 2 | 0.0 | 0 | 3,122.4 | < 1 | 141,138.2 | < 1 | 34.0 | < 1 |
| Status 3 | 2,506.3 | < 1 | 142,037.5 | < 1 | 43,455.8 | < 1 | 111,756.6 | < 1 |
| Status 4 | 0.0 | 0 | 0.0 | 0 | 30,984.9 | < 1 | 16.1 | < 1 |
| Total | 2,506.3 | < 1 | 145,526.4 | < 1 | 215,602.3 | 1 | 111,806.7 | < 1 |
| | State Coastal Reserve | | ST Nat.Area/Preserve | | Other State Lands | | Private Cons. Easemt. | |
| | ha | % | ha | % | ha | % | ha | % |
| Status 1 | 0.0 | 0 | 1,858.8 | < 1 | 0.0 | 0 | 0.0 | 0 |
| Status 2 | 713.2 | < 1 | 12,575.1 | < 1 | 0.0 | 0 | 1,081.5 | < 1 |
| Status 3 | 0.0 | 0 | 4,526.7 | < 1 | 7,422.5 | < 1 | 40,888.1 | < 1 |
| Status 4 | 0.0 | 0 | 0.0 | 0 | 1,203.5 | < 1 | 0.0 | 0 |
| Total | 713.2 | < 1 | 18,960.6 | < 1 | 8,626.0 | < 1 | 41,969.6 | < 1 |
| | Private Land - No Res. | | Water | | Overall Total | | | |
| | ha | % | ha | % | ha | % | | |
| Status 1 | 0.0 | 0 | 0.0 | 0 | 31,542.7 < 1 | | | |
| Status 2 | 0.0 | 0 | 0.0 | 0 | 248,100.8 2 | | | |
| Status 3 | 104.6 | < 1 | 0.3 | < 1 | 1,094,392.5 10 | | | |
| Status 4 | 14,299,742.2 | 88 | 22,989.2 | < 1 | 14,385,927.9 89 | | | |
| Total | 14,299,846.7 | 88 | 22,989.4 | < 1 | 15,759,963.8 100 | | | |

GAP Status 1: An area having permanent protection from conversion of natural land cover and a mandated management plan in operation to maintain a natural state within which disturbance events (of natural type, frequency, and intensity) are allowed to proceed without interference or are mimicked through management.

GAP Status 2: An area having permanent protection from conversion of natural land cover and a mandated management plan in operation to maintain a primarily natural state, but which may receive use or management practices that degrade the quality of existing natural communities.

GAP Status 3: An area having permanent protection from conversion of natural land cover for the majority of the area, but subject to extractive uses of either a broad, low-intensity type or localized intense type. It also confers protection to federally listed endangered and threatened species throughout the area.

GAP Status 4: Lack of irrevocable easement or mandate to prevent conversion of natural habitat types to anthropogenic habitat types. Allows for intensive use throughout the tract. Also includes those tracts for which the existence of such restrictions or sufficient information to establish a higher status is unknown.

PREDICTED HABITAT MODEL(S):

Year-round Model:

Habitat Description: These semi-aquatic snakes occur in any type of wet situation. They may be particularly abundant along the Coast and adjacent Coastal Plain near the edges of lakes, and in and around beaver ponds, marshes, bogs and swamps, and may also occur near flowing water along the edges of streams.

NatureServe 2005: "Wet meadows, marshes, bogs, ponds, lake shorelines, swamps, and shallow slow streams; also wet or moist forest in some areas. Usually in or near vegetative cover at water's edge. Climbs into low vegetation, rarely into tree canopy (Bishop and Farrell, 1994, Herpetol. Rev. 25:127). Hibernates underground on high ground, sometimes on rocky slopes."

Quoted from compiled state habitat notes. Amy Silvano 25aug05

Ecosystem classifiers: Semi-aquatic species. r. Amy Silvano 25Aug05

Hydrography Mask:

Freshwater Only

Slow Current Only

Utilizes flowing water features with buffers of 120m from and 60m into selected water features.

Utilizes open water features with buffers of 120m from and 60m into selected water features.

Utilizes wet vegetation features with buffers of 60m from and 60m into selected vegetation features.

Selected Map Units:

| Functional Group | Map Unit Name |
|-----------------------------------|---|
| Coastal Dune & Freshwater Wetland | Atlantic and Gulf Coastal Plain Interdunal Wetland |
| Forest/Woodland | Allegheny-Cumberland Dry Oak Forest and Woodland |
| Forest/Woodland | Allegheny-Cumberland Dry Oak Forest and Woodland - Hardwood Modifier |
| Forest/Woodland | Allegheny-Cumberland Dry Oak Forest and Woodland - Pine Modifier |
| Forest/Woodland | Appalachian Hemlock-Hardwood Forest |
| Forest/Woodland | Appalachian Serpentine Woodland |
| Forest/Woodland | Atlantic Coastal Plain Dry and Dry-Mesic Oak Forest |
| Forest/Woodland | Atlantic Coastal Plain Fall-Line Sandhills Longleaf Pine Woodland - Loblolly Modifier |
| Forest/Woodland | Atlantic Coastal Plain Fall-line Sandhills Longleaf Pine Woodland - Offsite Hardwood Modifier |
| Forest/Woodland | Atlantic Coastal Plain Fall-line Sandhills Longleaf Pine Woodland - Open Understory Modifier |
| Forest/Woodland | Atlantic Coastal Plain Fall-line Sandhills Longleaf Pine Woodland - Scrub/Shrub Understory Modifier |
| Forest/Woodland | Atlantic Coastal Plain Mesic Hardwood and Mixed Forest |
| Forest/Woodland | Atlantic Coastal Plain Northern Mixed Oak-Heath Forest |
| Forest/Woodland | Atlantic Coastal Plain Upland Longleaf Pine Woodland |
| Forest/Woodland | Central Appalachian Oak and Pine Forest |
| Forest/Woodland | Central Appalachian Pine-Oak Rocky Woodland |
| Forest/Woodland | East Gulf Coastal Plain Interior Shortleaf Pine-Oak Forest - Hardwood Modifier |
| Forest/Woodland | East Gulf Coastal Plain Interior Shortleaf Pine-Oak Forest - Mixed Modifier |
| Forest/Woodland | East Gulf Coastal Plain Interior Shortleaf Pine-Oak Forest - Pine Modifier |
| Forest/Woodland | East Gulf Coastal Plain Interior Upland Longleaf Pine Woodland - Loblolly Modifier |
| Forest/Woodland | East Gulf Coastal Plain Interior Upland Longleaf Pine Woodland - Offsite Hardwood Modifier |
| Forest/Woodland | East Gulf Coastal Plain Interior Upland Longleaf Pine Woodland - Open Understory Modifier |
| Forest/Woodland | East Gulf Coastal Plain Interior Upland Longleaf Pine Woodland - Scrub/Shrub Modifier |
| Forest/Woodland | East Gulf Coastal Plain Limestone Forest |
| Forest/Woodland | East Gulf Coastal Plain Northern Dry Upland Hardwood Forest |
| Forest/Woodland | East Gulf Coastal Plain Northern Loess Bluff Forest |
| Forest/Woodland | East Gulf Coastal Plain Northern Loess Plain Oak-Hickory Upland - Hardwood Modifier |
| Forest/Woodland | East Gulf Coastal Plain Northern Loess Plain Oak-Hickory Upland - Juniper Modifier |
| Forest/Woodland | East Gulf Coastal Plain Northern Mesic Hardwood Forest |
| Forest/Woodland | East Gulf Coastal Plain Southern Loess Bluff Forest |
| Forest/Woodland | East Gulf Coastal Plain Southern Mesic Slope Forest |
| Forest/Woodland | Florida Longleaf Pine Sandhill - Open Understory Modifier |

| | |
|-----------------|--|
| Forest/Woodland | Florida Longleaf Pine Sandhill - Scrub/Shrub Understory Modifier |
| Forest/Woodland | Florida Peninsula Inland Scrub |
| Forest/Woodland | Northeastern Interior Dry Oak Forest - Mixed Modifier |
| Forest/Woodland | Northeastern Interior Dry Oak Forest - Virginia/Pitch Pine Modifier |
| Forest/Woodland | Northeastern Interior Dry Oak Forest-Hardwood Modifier |
| Forest/Woodland | Northern Atlantic Coastal Plain Dry Hardwood Forest |
| Forest/Woodland | South-Central Interior Mesophytic Forest |
| Forest/Woodland | Southeastern Interior Longleaf Pine Woodland |
| Forest/Woodland | Southern and Central Appalachian Cove Forest |
| Forest/Woodland | Southern and Central Appalachian Oak Forest |
| Forest/Woodland | Southern and Central Appalachian Oak Forest - Xeric |
| Forest/Woodland | Southern Appalachian Low Mountain Pine Forest |
| Forest/Woodland | Southern Coastal Plain Dry Upland Hardwood Forest |
| Forest/Woodland | Southern Coastal Plain Oak Dome and Hammock |
| Forest/Woodland | Southern Interior Low Plateau Dry-Mesic Oak Forest |
| Forest/Woodland | Southern Interior Low Plateau Dry-Mesic Oak Forest - Evergreen Modifier |
| Forest/Woodland | Southern Piedmont Dry Oak-(Pine) Forest - Hardwood Modifier |
| Forest/Woodland | Southern Piedmont Dry Oak-(Pine) Forest - Loblolly Pine Modifier |
| Forest/Woodland | Southern Piedmont Dry Oak-(Pine) Forest - Mixed Modifier |
| Forest/Woodland | Southern Piedmont Dry Oak-Heath Forest - Hardwood Modifier |
| Forest/Woodland | Southern Piedmont Dry Oak-Heath Forest - Mixed Modifier |
| Forest/Woodland | Southern Piedmont Dry Oak-Heath Forest - Virginia/Pitch Pine Modifier |
| Forest/Woodland | Southern Piedmont Mafic Hardpan Woodland |
| Forest/Woodland | Southern Piedmont Mesic Forest |
| Forest/Woodland | Southern Ridge and Valley Dry Calcareous Forest |
| Forest/Woodland | Southern Ridge and Valley Dry Calcareous Forest - Hardwood Modifier |
| Forest/Woodland | Southern Ridge and Valley Dry Calcareous Forest - Pine Modifier |
| Water | Open Water (Fresh) |
| Wetlands | Atlantic Coastal Plain Blackwater Stream Floodplain Forest - Forest Modifier |
| Wetlands | Atlantic Coastal Plain Blackwater Stream Floodplain Forest - Herbaceous Modifier |
| Wetlands | Atlantic Coastal Plain Brownwater Stream Floodplain Forest |
| Wetlands | Atlantic Coastal Plain Clay-Based Carolina Bay Forested Wetland |
| Wetlands | Atlantic Coastal Plain Clay-Based Carolina Bay Herbaceous Wetland |
| Wetlands | Atlantic Coastal Plain Depression Pondshore |
| Wetlands | Atlantic Coastal Plain Large Natural Lakeshore |
| Wetlands | Atlantic Coastal Plain Nonriverine Swamp and Wet Hardwood Forest - Taxodium/Nyssa Modifier |
| Wetlands | Atlantic Coastal Plain Nonriverine Swamp and Wet Hardwood Forest - Oak Dominated Modifier |
| Wetlands | Atlantic Coastal Plain Northern Basin Peat Swamp |
| Wetlands | Atlantic Coastal Plain Northern Basin Swamp and Wet Hardwood Forest |
| Wetlands | Atlantic Coastal Plain Northern Pondshore |
| Wetlands | Atlantic Coastal Plain Northern Wet Longleaf Pine Savanna and Flatwoods |
| Wetlands | Atlantic Coastal Plain Peatland Pocosin |
| Wetlands | Atlantic Coastal Plain Sandhill Seep |
| Wetlands | Atlantic Coastal Plain Small Blackwater River Floodplain Forest |
| Wetlands | Atlantic Coastal Plain Small Brownwater River Floodplain Forest |
| Wetlands | Atlantic Coastal Plain Southern Wet Pine Savanna and Flatwoods |
| Wetlands | Atlantic Coastal Plain Streamhead Seepage Swamp, Pocosin, and Baygall |
| Wetlands | Atlantic Coastal Plain Xeric River Dune |
| Wetlands | Central Appalachian Floodplain - Forest Modifier |
| Wetlands | Central Appalachian Floodplain - Herbaceous Modifier |
| Wetlands | Central Appalachian Riparian - Forest Modifier |
| Wetlands | Central Appalachian Riparian - Herbaceous Modifier |
| Wetlands | Central Florida Herbaceous Pondshore |
| Wetlands | Central Florida Herbaceous Seep |
| Wetlands | Central Florida Pine Flatwoods |
| Wetlands | Central Interior Highlands and Appalachian Sinkhole and Depression Pond |

| | |
|----------|---|
| Wetlands | Cumberland Riverscour |
| Wetlands | East Gulf Coastal Plain Interior Shrub Bog |
| Wetlands | East Gulf Coastal Plain Jackson Plain Dry Flatwoods - Open Understory Modifier |
| Wetlands | East Gulf Coastal Plain Jackson Plain Dry Flatwoods - Scrub/Shrub Understory Modifier |
| Wetlands | East Gulf Coastal Plain Large River Floodplain Forest - Forest Modifier |
| Wetlands | East Gulf Coastal Plain Large River Floodplain Forest - Herbaceous Modifier |
| Wetlands | East Gulf Coastal Plain Near-Coast Pine Flatwoods - Offsite Hardwood Modifier |
| Wetlands | East Gulf Coastal Plain Near-Coast Pine Flatwoods - Open Understory Modifier |
| Wetlands | East Gulf Coastal Plain Near-Coast Pine Flatwoods - Scrub/Shrub Understory Modifier |
| Wetlands | East Gulf Coastal Plain Northern Depression Pondshore |
| Wetlands | East Gulf Coastal Plain Northern Seepage Swamp |
| Wetlands | East Gulf Coastal Plain Small Stream and River Floodplain Forest |
| Wetlands | East Gulf Coastal Plain Southern Depression Pondshore |
| Wetlands | East Gulf Coastal Plain Southern Loblolly-Hardwood Flatwoods |
| Wetlands | East Gulf Coastal Plain Treeless Savanna and Wet Prairie |
| Wetlands | Floridian Highlands Freshwater Marsh |
| Wetlands | Lower Mississippi River Bottomland and Floodplain Forest |
| Wetlands | Lower Mississippi River Bottomland Depressions - Forest Modifier |
| Wetlands | Lower Mississippi River Bottomland Depressions - Herbaceous Modifier |
| Wetlands | Mississippi River Low Floodplain (Bottomland) Forest |
| Wetlands | Mississippi River Riparian Forest |
| Wetlands | North-Central Appalachian Acidic Swamp |
| Wetlands | North-Central Appalachian Seepage Fen |
| Wetlands | North-Central Interior and Appalachian Rich Swamp |
| Wetlands | South Florida Bayhead Swamp |
| Wetlands | South Florida Cypress Dome |
| Wetlands | South Florida Dwarf Cypress Savanna |
| Wetlands | South Florida Freshwater Slough and Gator Hole |
| Wetlands | South Florida Hardwood Hammock |
| Wetlands | South Florida Pine Flatwoods |
| Wetlands | South Florida Pond-Apple/Popash Slough |
| Wetlands | South Florida Wet Marl Prairie |
| Wetlands | South Florida Willow Head |
| Wetlands | South-Central Interior Large Floodplain - Forest Modifier |
| Wetlands | South-Central Interior Large Floodplain - Herbaceous Modifier |
| Wetlands | South-Central Interior Small Stream and Riparian |
| Wetlands | South-Central Interior/Upper Coastal Plain Wet Flatwoods |
| Wetlands | Southern and Central Appalachian Bog and Fen |
| Wetlands | Southern Appalachian Seepage Wetland |
| Wetlands | Southern Coastal Plain Blackwater River Floodplain Forest |
| Wetlands | Southern Coastal Plain Herbaceous Seepage Bog |
| Wetlands | Southern Coastal Plain Hydric Hammock |
| Wetlands | Southern Coastal Plain Nonriverine Basin Swamp |
| Wetlands | Southern Coastal Plain Nonriverine Cypress Dome |
| Wetlands | Southern Coastal Plain Seepage Swamp and Baygall |
| Wetlands | Southern Coastal Plain Spring-run Stream Aquatic Vegetation |
| Wetlands | Southern Piedmont Large Floodplain Forest - Forest Modifier |
| Wetlands | Southern Piedmont Large Floodplain Forest - Herbaceous Modifier |
| Wetlands | Southern Piedmont Seepage Wetland |
| Wetlands | Southern Piedmont Small Floodplain and Riparian Forest |
| Wetlands | Southern Piedmont/Ridge and Valley Upland Depression Swamp |
| Wetlands | Unconsolidated Shore (Lake/River/Pond) |
| Wetlands | Western Highland Rim Seepage Fen |

CITATIONS: Behler, J. L., and F. W. King. 1979. The Audubon Society field guide to North American reptiles and amphibians. Alfred A. Knopf, New York. 719 pp.

- DeGraaf, R. M., and D. D. Rudis. 1983. Amphibians and reptiles of New England. Habitats and natural history. Univ. Massachusetts Press. vii + 83 pp.
- Fitch, H. S. 1970. Reproductive cycles of lizards and snakes. Univ. Kansas Museum Natural History Miscellaneous Publication 52:1-247.
- Lawson, R. 1987. Molecular studies of thamnophiine snakes:1. The phylogeny of the genus NERODIA. J. Herpetology 21:140-157.
- Minton, S. A., Jr. 1972. Amphibians and reptiles of Indiana. Indiana Academy Science Monographs 3. v + 346 pp.
- Rossman, D. A. 1970. *Thamnophis sauritus*. Cat. Am. Amph. Rep. 99.1-99.2.
- Vogt, R. G. 1981. Natural history of amphibians and reptiles of Wisconsin. Milwaukee Public Museum. 205 pp.

For more information:: SE-GAP Analysis Project / BaSIC
127 David Clark Labs
Dept. of Biology, NCSU
Raleigh, NC 27695-7617
(919) 513-2853
www.basic.ncsu.edu/segap

Compiled: 15 September 2011

This data was compiled and/or developed
by the Southeast GAP Analysis Project at
The Biodiversity and Spatial Information
Center, North Carolina State University.