



# SOUTHEAST GAP ANALYSIS PROJECT



## Species Modeling Report

### Chicken Turtle

*Deirochelys reticularia*

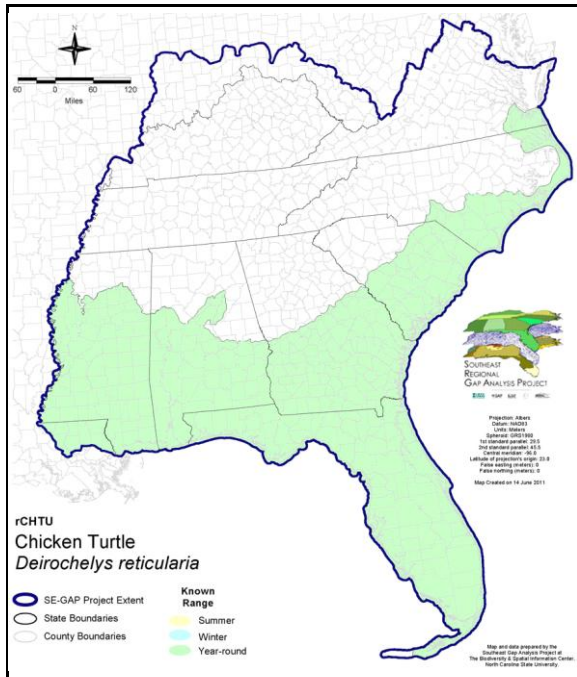
Taxa: Reptilian  
Order: Cryptodeira  
Family: Emydidae

SE-GAP Spp Code: **rCHTU**

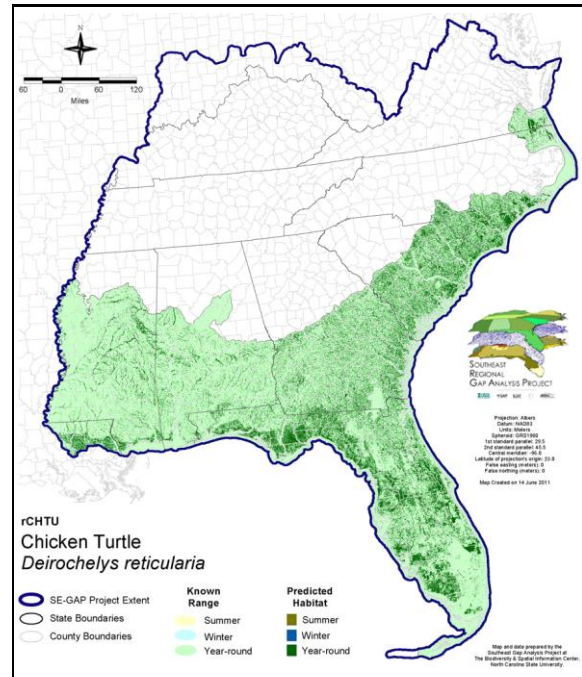
ITIS Species Code: 173786

NatureServe Element Code: ARAAD03010

#### KNOWN RANGE:



#### PREDICTED HABITAT:



Range Map Link: [http://www.basic.ncsu.edu/segap/datazip/maps/SE\\_Range\\_rCHTU.pdf](http://www.basic.ncsu.edu/segap/datazip/maps/SE_Range_rCHTU.pdf)

Predicted Habitat Map Link: [http://www.basic.ncsu.edu/segap/datazip/maps/SE\\_Dist\\_rCHTU.pdf](http://www.basic.ncsu.edu/segap/datazip/maps/SE_Dist_rCHTU.pdf)

GAP Online Tool Link: <http://www.gapservice.ncsu.edu/segap/segap/index2.php?species=rCHTU>

Data Download: [http://www.basic.ncsu.edu/segap/datazip/region/vert/rCHTU\\_se00.zip](http://www.basic.ncsu.edu/segap/datazip/region/vert/rCHTU_se00.zip)

#### PROTECTION STATUS:

Reported on March 14, 2011

Federal Status: ---

State Status: MS (Non-game species in need of management), NC (SR), VA (LE)

NS Global Rank: G5

NS State Rank: AL (S3), AR (S3), FL (S4), GA (S5), LA (S3S4), MO (SNR), MS (S4), NC (S3), OK (S2), SC (SNR), TX (S5), VA (S1)

**SUMMARY OF PREDICTED HABITAT BY MANAGMENT AND GAP PROTECTION STATUS:**

	US FWS		US Forest Service		Tenn. Valley Author.		US DOD/ACOE	
	ha	%	ha	%	ha	%	ha	%
Status 1	71,882.1	< 1	4,669.6	< 1	0.0	0	0.0	0
Status 2	54,514.6	< 1	31,867.4	< 1	0.0	0	18.7	< 1
Status 3	3.9	< 1	387,133.0	3	0.0	0	258,286.4	2
Status 4	5.9	< 1	0.0	0	0.0	0	6.3	< 1
Total	126,406.4	1	423,670.0	4	0.0	0	258,311.4	2
	US Dept. of Energy		US Nat. Park Service		NOAA		Other Federal Lands	
	ha	%	ha	%	ha	%	ha	%
Status 1	0.0	0	23,793.8	< 1	10.3	< 1	7,220.7	< 1
Status 2	0.0	0	3,172.8	< 1	3,075.0	< 1	46.9	< 1
Status 3	26,275.8	< 1	153,969.0	1	0.0	0	2,869.4	< 1
Status 4	0.0	0	0.0	0	0.0	0	0.0	0
Total	26,275.8	< 1	180,935.6	2	3,085.3	< 1	10,137.0	< 1
	Native Am. Reserv.		State Park/Hist. Park		State WMA/Gameland		State Forest	
	ha	%	ha	%	ha	%	ha	%
Status 1	0.0	0	106.7	< 1	0.0	0	0.0	0
Status 2	0.0	0	174.0	< 1	292,273.4	2	0.0	0
Status 3	1,566.6	< 1	405,343.4	3	39,296.8	< 1	234,957.7	2
Status 4	0.0	0	< 0.1	< 1	5,560.5	< 1	16.1	< 1
Total	1,566.6	< 1	405,624.1	3	337,130.6	3	234,973.8	2
	State Coastal Reserve		ST Nat.Area/Preserve		Other State Lands		Private Cons. Easemt.	
	ha	%	ha	%	ha	%	ha	%
Status 1	0.0	0	2,928.9	< 1	0.0	0	0.0	0
Status 2	973.5	< 1	30,170.3	< 1	0.0	0	1,890.5	< 1
Status 3	0.0	0	20,061.9	< 1	9,558.8	< 1	84,783.4	< 1
Status 4	0.0	0	0.0	0	437.8	< 1	0.0	0
Total	973.5	< 1	53,161.1	< 1	9,996.6	< 1	86,673.9	< 1
	Private Land - No Res.		Water		Overall Total			
	ha	%	ha	%	ha	%		
Status 1	0.0	0	0.0	0	110,612.0	< 1		
Status 2	0.0	0	0.0	0	418,177.1	4		
Status 3	139.3	< 1	1.0	< 1	1,624,246.4	17		
Status 4	9,189,071.4	78	19,824.5	< 1	9,220,477.1	78		
Total	9,189,210.7	78	19,825.5	< 1	11,373,512.5	100		

GAP Status 1: An area having permanent protection from conversion of natural land cover and a mandated management plan in operation to maintain a natural state within which disturbance events (of natural type, frequency, and intensity) are allowed to proceed without interference or are mimicked through management.

GAP Status 2: An area having permanent protection from conversion of natural land cover and a mandated management plan in operation to maintain a primarily natural state, but which may receive use or management practices that degrade the quality of existing natural communities.

GAP Status 3: An area having permanent protection from conversion of natural land cover for the majority of the area, but subject to extractive uses of either a broad, low-intensity type or localized intense type. It also confers protection to federally listed endangered and threatened species throughout the area.

GAP Status 4: Lack of irrevocable easement or mandate to prevent conversion of natural habitat types to anthropogenic habitat types. Allows for intensive use throughout the tract. Also includes those tracts for which the existence of such restrictions or sufficient information to establish a higher status is unknown.

**PREDICTED HABITAT MODEL(S):**

**Year-round Model:**

Habitat Description: Chicken Turtles occupy shallow ponds and lakes with thick vegetation, cypress swamps, ditches, vernal pools, marshes, swamps, borrow pits and Carolina bays (Ernst et al. 1994, Mount 1975, Palmer & Braswell 1995) and in Virginia, interdunal swales (Buhlmann 1995). This species is also known to commonly inhabit ponds surrounded by sandhills and pine flatwoods (Palmer & Braswell 1995). Chicken turtles prefer sluggish or standing water with soft bottoms and an abundance of aquatic vegetation and generally avoid stream and river environments (Ernst et al. 1994, Mount 1975, Palmer & Braswell 1995). Amy Silvano 6jul05

Ecosystem Classifiers: All Wetlands, Evergreen Forests, Blackwater Floodplain systems only. Amy Silvano 6jul05

**Hydrography Mask:**

Freshwater Only

Slow Current Only

Utilizes flowing water features with buffer of 200m from selected water features.

Utilizes open water features with buffers of 250m from and 30m into selected water features.

Utilizes wet vegetation features with buffers of 250m from and unlimited into selected vegetation features.

**Selected Map Units:**

Functional Group	Map Unit Name
Coastal Dune & Freshwater Wetland	Atlantic and Gulf Coastal Plain Interdunal Wetland
Forest/Woodland	Atlantic Coastal Plain Fall-line Sandhills Longleaf Pine Woodland - Open Understory Modifier
Forest/Woodland	Atlantic Coastal Plain Fall-line Sandhills Longleaf Pine Woodland - Scrub/Shrub Understory Modifier
Forest/Woodland	Atlantic Coastal Plain Upland Longleaf Pine Woodland
Forest/Woodland	East Gulf Coastal Plain Interior Upland Longleaf Pine Woodland - Open Understory Modifier
Forest/Woodland	East Gulf Coastal Plain Interior Upland Longleaf Pine Woodland - Scrub/Shrub Modifier
Forest/Woodland	Florida Longleaf Pine Sandhill - Open Understory Modifier
Forest/Woodland	Florida Longleaf Pine Sandhill - Scrub/Shrub Understory Modifier
Freshwater Tidal Marsh & Wetland	Atlantic Coastal Plain Central Fresh-Oligohaline Tidal Marsh
Freshwater Tidal Marsh & Wetland	Atlantic Coastal Plain Embayed Region Tidal Freshwater Marsh
Freshwater Tidal Marsh & Wetland	Atlantic Coastal Plain Northern Fresh and Oligohaline Tidal Marsh
Freshwater Tidal Marsh & Wetland	Florida Big Bend Fresh-Oligohaline Tidal Marsh
Water	Open Water (Fresh)
Wetlands	Atlantic Coastal Plain Blackwater Stream Floodplain Forest - Forest Modifier
Wetlands	Atlantic Coastal Plain Clay-Based Carolina Bay Forested Wetland
Wetlands	Atlantic Coastal Plain Clay-Based Carolina Bay Herbaceous Wetland
Wetlands	Atlantic Coastal Plain Depression Pondshore
Wetlands	Atlantic Coastal Plain Nonriverine Swamp and Wet Hardwood Forest - Taxodium/Nyssa Modifier
Wetlands	Atlantic Coastal Plain Northern Basin Peat Swamp
Wetlands	Atlantic Coastal Plain Northern Basin Swamp and Wet Hardwood Forest
Wetlands	Atlantic Coastal Plain Northern Pondshore
Wetlands	Atlantic Coastal Plain Northern Wet Longleaf Pine Savanna and Flatwoods
Wetlands	Atlantic Coastal Plain Peatland Pocosin
Wetlands	Atlantic Coastal Plain Sandhill Seep
Wetlands	Atlantic Coastal Plain Small Blackwater River Floodplain Forest
Wetlands	Atlantic Coastal Plain Southern Wet Pine Savanna and Flatwoods
Wetlands	Atlantic Coastal Plain Streamhead Seepage Swamp, Pocosin, and Baygall
Wetlands	Central Florida Herbaceous Pondshore
Wetlands	Central Florida Herbaceous Seep
Wetlands	Central Florida Pine Flatwoods
Wetlands	Central Interior Highlands and Appalachian Sinkhole and Depression Pond
Wetlands	East Gulf Coastal Plain Interior Shrub Bog
Wetlands	East Gulf Coastal Plain Jackson Plain Dry Flatwoods - Open Understory Modifier

Wetlands	East Gulf Coastal Plain Jackson Plain Dry Flatwoods - Scrub/Shrub Understory Modifier
Wetlands	East Gulf Coastal Plain Large River Floodplain Forest - Herbaceous Modifier
Wetlands	East Gulf Coastal Plain Near-Coast Pine Flatwoods - Offsite Hardwood Modifier
Wetlands	East Gulf Coastal Plain Near-Coast Pine Flatwoods - Open Understory Modifier
Wetlands	East Gulf Coastal Plain Near-Coast Pine Flatwoods - Scrub/Shrub Understory Modifier
Wetlands	East Gulf Coastal Plain Northern Depression Pondshore
Wetlands	East Gulf Coastal Plain Northern Seepage Swamp
Wetlands	East Gulf Coastal Plain Small Stream and River Floodplain Forest
Wetlands	East Gulf Coastal Plain Southern Depression Pondshore
Wetlands	East Gulf Coastal Plain Southern Loblolly-Hardwood Flatwoods
Wetlands	East Gulf Coastal Plain Treeless Savanna and Wet Prairie
Wetlands	Floridian Highlands Freshwater Marsh
Wetlands	Lower Mississippi River Bottomland Depressions - Forest Modifier
Wetlands	North-Central Appalachian Acidic Swamp
Wetlands	North-Central Appalachian Seepage Fen
Wetlands	South Florida Bayhead Swamp
Wetlands	South Florida Cypress Dome
Wetlands	South Florida Dwarf Cypress Savanna
Wetlands	South Florida Freshwater Slough and Gator Hole
Wetlands	South Florida Hardwood Hammock
Wetlands	South Florida Pine Flatwoods
Wetlands	South Florida Pond-Apple/Popash Slough
Wetlands	South Florida Wet Marl Prairie
Wetlands	South Florida Willow Head
Wetlands	South-Central Interior/Upper Coastal Plain Wet Flatwoods
Wetlands	Southern and Central Appalachian Bog and Fen
Wetlands	Southern Appalachian Seepage Wetland
Wetlands	Southern Coastal Plain Blackwater River Floodplain Forest
Wetlands	Southern Coastal Plain Herbaceous Seepage Bog
Wetlands	Southern Coastal Plain Hydric Hammock
Wetlands	Southern Coastal Plain Nonriverine Basin Swamp
Wetlands	Southern Coastal Plain Nonriverine Cypress Dome
Wetlands	Southern Coastal Plain Seepage Swamp and Baygall
Wetlands	Southern Piedmont Seepage Wetland
Wetlands	Southern Piedmont/Ridge and Valley Upland Depression Swamp

- CITATIONS:** Behler, J. L., and F. W. King. 1979. The Audubon Society field guide to North American reptiles and amphibians. Alfred A. Knopf, New York. 719 pp.
- Buhlmann, K. A. 1995. Habitat use, terrestrial movements, and conservation of the turtle, *DEIROCHELYS RETICULARIA* in Virginia. *Journal of Herpetology* 29:173-181.
- Ernst, C. H., and R. W. Barbour. 1972. *Turtles of the United States*. Univ. Press of Kentucky, Lexington. x + 347 pp.
- Ernst, C. H., R. W. Barbour, and J. E. Lovich. 1994. *Turtles of the United States and Canada*. Smithsonian Institution Press, Washington, D.C. xxxviii + 578 pp.
- Gibbons, J. W., and R. D. Semlitsch. 1991. *Guide to the reptiles and amphibians of the Savannah River Site*. Univ. of Georgia Press, Athens. xii + 131 pp.
- Jackson, D. R. 1988. Reproductive strategies of sympatric freshwater emydid turtles in northern peninsular Florida. *Bull. Florida State Mus.* 33:133-158.
- Jackson, D. R. 1996. Meat on the move: diet of a predatory turtle, *DEIROCHELYS RETICULARIA* (Testudines: Emydidae). *Chelonian Conservation and Biology* 2(1):105-108.
- Martof, B. S., W. M. Palmer, J. R. Bailey, and J. R. Harrison, III. 1980. *Amphibians and reptiles of the Carolinas and Virginia*. University of North Carolina Press, Chapel Hill, North Carolina. 264 pp.
- Mitchell, J. C. 1991. Amphibians and reptiles. Pages 411-76 in K. Terwilliger (coordinator). *Virginia's Endangered Species: Proceedings of a Symposium*. McDonald and Woodward Publishing Company, Blacksburg, Virginia.
- Mount, R. H. 1975. *The Reptiles and Amphibians of Alabama*. Auburn University Agricultural Experiment Station, Auburn, Alabama. vii + 347 pp.
- Zug, G. R., and A. Schwartz. 1971. *Deirochelys reticularia*. *Cat. Am. Amph. Rep.* 107.1-107.3.

For more information:: SE-GAP Analysis Project / BaSIC  
127 David Clark Labs  
Dept. of Biology, NCSU  
Raleigh, NC 27695-7617  
(919) 513-2853  
[www.basic.ncsu.edu/segap](http://www.basic.ncsu.edu/segap)

Compiled: 15 September 2011

This data was compiled and/or developed  
by the Southeast GAP Analysis Project at  
The Biodiversity and Spatial Information  
Center, North Carolina State University.