



SOUTHEAST GAP ANALYSIS PROJECT



Species Modeling Report

Black Swamp Snake

Seminatrix pygaea

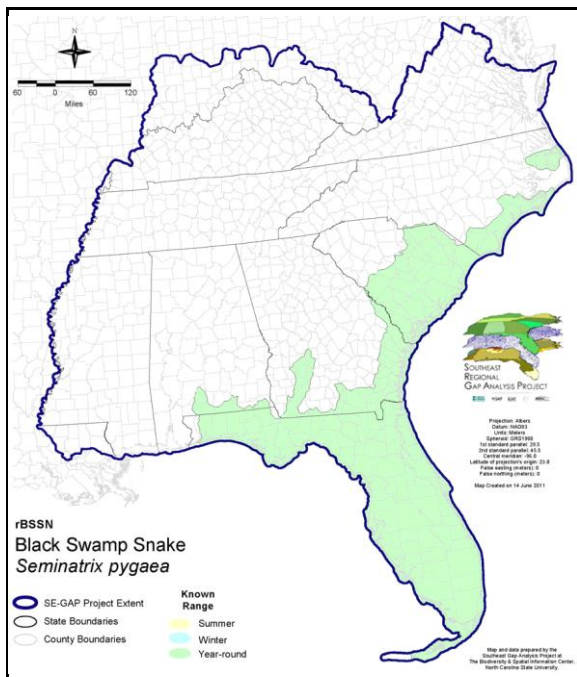
Taxa: Reptilian
 Order: Squamata
 Family: Colubridae

SE-GAP Spp Code: **rBSSN**

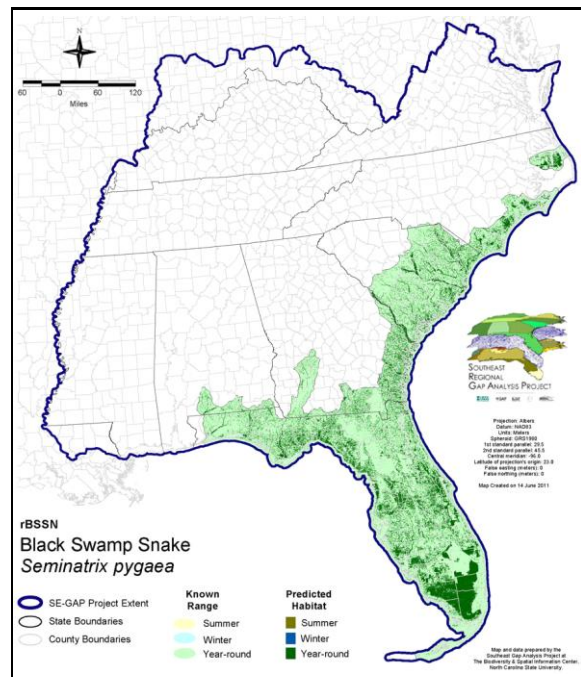
ITIS Species Code: 174273

NatureServe Element Code: ARADB31010

KNOWN RANGE:



PREDICTED HABITAT:



Range Map Link: http://www.basic.ncsu.edu/segap/datazip/maps/SE_Range_rBSSN.pdf

Predicted Habitat Map Link: http://www.basic.ncsu.edu/segap/datazip/maps/SE_Dist_rBSSN.pdf

GAP Online Tool Link: <http://www.gapservice.ncsu.edu/segap/segap/index2.php?species=rBSSN>

Data Download: http://www.basic.ncsu.edu/segap/datazip/region/vert/rBSSN_se00.zip

PROTECTION STATUS:

Reported on March 14, 2011

Federal Status: ---

State Status: NC (SR)

NS Global Rank: G5

NS State Rank: AL (S2), FL (SNR), GA (S3), NC (S2), SC (SNR)

SUMMARY OF PREDICTED HABITAT BY MANAGMENT AND GAP PROTECTION STATUS:

	US FWS		US Forest Service		Tenn. Valley Author.		US DOD/ACOE	
	ha	%	ha	%	ha	%	ha	%
Status 1	59,987.0	< 1	4,372.3	< 1	0.0	0	0.0	0
Status 2	115,502.1	2	24,869.9	< 1	0.0	0	0.0	0
Status 3	1,355.0	< 1	189,527.9	3	0.0	0	106,540.8	2
Status 4	5.2	< 1	< 0.1	< 1	0.0	0	0.0	0
Total	176,849.4	3	218,770.2	3	0.0	0	106,540.8	2
	US Dept. of Energy		US Nat. Park Service		NOAA		Other Federal Lands	
	ha	%	ha	%	ha	%	ha	%
Status 1	0.0	0	223,098.9	3	1,018.2	< 1	11,337.7	< 1
Status 2	0.0	0	24,070.1	< 1	29,635.0	< 1	26.8	< 1
Status 3	15,196.8	< 1	266,330.2	4	0.0	0	0.0	0
Status 4	0.0	0	0.0	0	0.0	0	0.0	0
Total	15,196.8	< 1	513,499.2	7	30,653.2	< 1	11,364.5	< 1
	Native Am. Reserv.		State Park/Hist. Park		State WMA/Gameland		State Forest	
	ha	%	ha	%	ha	%	ha	%
Status 1	0.0	0	0.0	0	0.0	0	0.0	0
Status 2	0.0	0	462.3	< 1	571,860.5	8	0.0	0
Status 3	0.0	0	450,798.8	6	24,685.2	< 1	148,845.8	2
Status 4	0.0	0	< 0.1	< 1	1,704.8	< 1	4.1	< 1
Total	0.0	0	451,261.2	6	598,250.5	8	148,849.9	2
	State Coastal Reserve		ST Nat.Area/Preserve		Other State Lands		Private Cons. Easemt.	
	ha	%	ha	%	ha	%	ha	%
Status 1	0.0	0	34.4	< 1	0.0	0	0.0	0
Status 2	9,691.4	< 1	30,431.0	< 1	0.0	0	1,571.5	< 1
Status 3	0.0	0	18,378.6	< 1	5,813.4	< 1	69,383.7	< 1
Status 4	0.0	0	0.0	0	727.9	< 1	0.0	0
Total	9,691.4	< 1	48,844.0	< 1	6,541.3	< 1	70,955.2	1
	Private Land - No Res.		Water		Overall Total			
	ha	%	ha	%	ha	%	ha	%
Status 1	0.0	0	0.0	0	299,848.4 4			
Status 2	0.0	0	0.0	0	808,120.7 11			
Status 3	89.7	< 1	0.5	< 1	1,296,946.4 21			
Status 4	4,416,253.5	63	43,100.5	< 1	4,463,495.7 63			
Total	4,416,343.2	63	43,101.0	< 1	6,868,411.3 100			

GAP Status 1: An area having permanent protection from conversion of natural land cover and a mandated management plan in operation to maintain a natural state within which disturbance events (of natural type, frequency, and intensity) are allowed to proceed without interference or are mimicked through management.

GAP Status 2: An area having permanent protection from conversion of natural land cover and a mandated management plan in operation to maintain a primarily natural state, but which may receive use or management practices that degrade the quality of existing natural communities.

GAP Status 3: An area having permanent protection from conversion of natural land cover for the majority of the area, but subject to extractive uses of either a broad, low-intensity type or localized intense type. It also confers protection to federally listed endangered and threatened species throughout the area.

GAP Status 4: Lack of irrevocable easement or mandate to prevent conversion of natural habitat types to anthropogenic habitat types. Allows for intensive use throughout the tract. Also includes those tracts for which the existence of such restrictions or sufficient information to establish a higher status is unknown.

PREDICTED HABITAT MODEL(S):

Year-round Model:

Habitat Description: Generally aquatic, black swamp snakes are typically associated with densely vegetated, aquatic habitats such as cypress- gum swamps, marshes, ponds in pine flatwoods, sluggish streams, and lakes with abundant floating or emergent vegetation (Palmer & Braswell 1995, Mount 1975, NatureServe 2005). They can also be found in Carolina Bays and tidal water environments (Wilson 1995, Palmer & Braswell 1995), including brackish waters and salt marshes (Ernst and Barbour 1989). Preferred habitat for this swamp snake includes waters with floating mats of water hyacinths and debris along the waters edge for shelter (Mount 1975, Conant & Collins 1998). Amy Silvano 25Aug05

Ecosystem Classifiers: Coastal, Brackish, & Tidal wetlands, Flatwoods, Swamps, Shrub/Scrub, Domes/Hammocks, Lakes/Pondshores, Floodplain/Riparian and open water. Amy Silvano 25Aug05

Hydrography Mask:

Slow Current Only

Utilizes flowing water features with buffers of 30m from and 120m into selected water features.

Utilizes open water features with buffers of 30m from and 120m into selected water features.

Utilizes wet vegetation features with buffer of unlimited into selected vegetation features.

Selected Map Units:

Functional Group	Map Unit Name
Brackish Tidal Marsh & Wetland	Atlantic Coastal Plain Central Salt and Brackish Tidal Marsh
Brackish Tidal Marsh & Wetland	Atlantic Coastal Plain Embayed Region Tidal Salt and Brackish Marsh
Brackish Tidal Marsh & Wetland	Atlantic Coastal Plain Indian River Lagoon Tidal Marsh
Brackish Tidal Marsh & Wetland	Atlantic Coastal Plain Northern Sea-Level Fen
Brackish Tidal Marsh & Wetland	Atlantic Coastal Plain Northern Tidal Salt Marsh
Brackish Tidal Marsh & Wetland	Atlantic Coastal Plain Northern Tidal Wooded Swamp
Brackish Tidal Marsh & Wetland	Atlantic Coastal Plain Southern Tidal Wooded Swamp
Brackish Tidal Marsh & Wetland	East Gulf Coastal Plain Tidal Wooded Swamp
Brackish Tidal Marsh & Wetland	Florida Big Bend Salt-Brackish Tidal Marsh
Brackish Tidal Marsh & Wetland	South Florida Everglades Sawgrass Marsh
Brackish Tidal Marsh & Wetland	Southwest Florida Perched Barriers Salt Swamp and Lagoon - Marsh Modifier
Coastal Dune & Freshwater Wetland	Atlantic and Gulf Coastal Plain Interdunal Wetland
Freshwater Tidal Marsh & Wetland	Atlantic Coastal Plain Central Fresh-Oligohaline Tidal Marsh
Freshwater Tidal Marsh & Wetland	Atlantic Coastal Plain Embayed Region Tidal Freshwater Marsh
Freshwater Tidal Marsh & Wetland	Atlantic Coastal Plain Northern Fresh and Oligohaline Tidal Marsh
Freshwater Tidal Marsh & Wetland	Florida Big Bend Fresh-Oligohaline Tidal Marsh
Water	Open Water (Brackish/Salt)
Water	Open Water (Fresh)
Wetlands	Atlantic Coastal Plain Blackwater Stream Floodplain Forest - Forest Modifier
Wetlands	Atlantic Coastal Plain Blackwater Stream Floodplain Forest - Herbaceous Modifier
Wetlands	Atlantic Coastal Plain Brownwater Stream Floodplain Forest
Wetlands	Atlantic Coastal Plain Clay-Based Carolina Bay Forested Wetland
Wetlands	Atlantic Coastal Plain Clay-Based Carolina Bay Herbaceous Wetland
Wetlands	Atlantic Coastal Plain Depression Pondshore
Wetlands	Atlantic Coastal Plain Large Natural Lakeshore
Wetlands	Atlantic Coastal Plain Nonriverine Swamp and Wet Hardwood Forest - Taxodium/Nyssa Modifier
Wetlands	Atlantic Coastal Plain Northern Basin Peat Swamp
Wetlands	Atlantic Coastal Plain Northern Basin Swamp and Wet Hardwood Forest
Wetlands	Atlantic Coastal Plain Northern Pondshore
Wetlands	Atlantic Coastal Plain Northern Wet Longleaf Pine Savanna and Flatwoods
Wetlands	Atlantic Coastal Plain Peatland Pocosin
Wetlands	Atlantic Coastal Plain Sandhill Seep
Wetlands	Atlantic Coastal Plain Small Blackwater River Floodplain Forest
Wetlands	Atlantic Coastal Plain Small Brownwater River Floodplain Forest

Wetlands	Atlantic Coastal Plain Southern Wet Pine Savanna and Flatwoods
Wetlands	Atlantic Coastal Plain Streamhead Seepage Swamp, Pocosin, and Baygall
Wetlands	Atlantic Coastal Plain Xeric River Dune
Wetlands	Central Florida Herbaceous Pondshore
Wetlands	Central Florida Herbaceous Seep
Wetlands	Central Florida Pine Flatwoods
Wetlands	East Gulf Coastal Plain Interior Shrub Bog
Wetlands	East Gulf Coastal Plain Jackson Plain Dry Flatwoods - Open Understory Modifier
Wetlands	East Gulf Coastal Plain Jackson Plain Dry Flatwoods - Scrub/Shrub Understory Modifier
Wetlands	East Gulf Coastal Plain Large River Floodplain Forest - Forest Modifier
Wetlands	East Gulf Coastal Plain Large River Floodplain Forest - Herbaceous Modifier
Wetlands	East Gulf Coastal Plain Near-Coast Pine Flatwoods - Offsite Hardwood Modifier
Wetlands	East Gulf Coastal Plain Near-Coast Pine Flatwoods - Open Understory Modifier
Wetlands	East Gulf Coastal Plain Near-Coast Pine Flatwoods - Scrub/Shrub Understory Modifier
Wetlands	East Gulf Coastal Plain Northern Depression Pondshore
Wetlands	East Gulf Coastal Plain Northern Seepage Swamp
Wetlands	East Gulf Coastal Plain Small Stream and River Floodplain Forest
Wetlands	East Gulf Coastal Plain Southern Depression Pondshore
Wetlands	East Gulf Coastal Plain Southern Loblolly-Hardwood Flatwoods
Wetlands	East Gulf Coastal Plain Treeless Savanna and Wet Prairie
Wetlands	Floridian Highlands Freshwater Marsh
Wetlands	Lower Mississippi River Bottomland Depressions - Herbaceous Modifier
Wetlands	South Florida Bayhead Swamp
Wetlands	South Florida Cypress Dome
Wetlands	South Florida Dwarf Cypress Savanna
Wetlands	South Florida Freshwater Slough and Gator Hole
Wetlands	South Florida Hardwood Hammock
Wetlands	South Florida Pine Flatwoods
Wetlands	South Florida Pond-Apple/Popash Slough
Wetlands	South Florida Wet Marl Prairie
Wetlands	South Florida Willow Head
Wetlands	South-Central Interior/Upper Coastal Plain Wet Flatwoods
Wetlands	Southern Coastal Plain Blackwater River Floodplain Forest
Wetlands	Southern Coastal Plain Herbaceous Seepage Bog
Wetlands	Southern Coastal Plain Hydric Hammock
Wetlands	Southern Coastal Plain Nonriverine Basin Swamp
Wetlands	Southern Coastal Plain Nonriverine Cypress Dome
Wetlands	Southern Coastal Plain Seepage Swamp and Baygall
Wetlands	Southern Coastal Plain Spring-run Stream Aquatic Vegetation

CITATIONS: Ashton, R. E., Jr., and P. S. Ashton. 1981. Handbook of Reptiles and Amphibians of Florida. Part One: The Snakes. Windward Pub. Co., Miami, Florida. 176 pp.

Behler, J. L., and F. W. King. 1979. The Audubon Society field guide to North American reptiles and amphibians. Alfred A. Knopf, New York. 719 pp.

Conant, R. and J. T. Collins. 1991. A field guide to reptiles and amphibians: eastern and central North America. Third edition. Houghton Mifflin Co., Boston, Massachusetts. 450 pp.

Conant, R. and J.T. Collins. 1998. A field guide to the reptiles and amphibians: eastern and central North America. Houghton Mifflin, Boston. 616 p.

Dodd, C. K., Jr. 1993. Population structure, body mass, activity, and orientation of an aquatic snake (SEMINATRIX PYGAEA) during a drought. Can. J. Zool. 71:1281-1288.

Ernst, C. H., and R. W. Barbour. 1989. Snakes of eastern North America. George Mason Univ. Press, Fairfax, Virginia. 282 pp.

Fitch, H. S. 1970. Reproductive cycles of lizards and snakes. Univ. Kansas Museum Natural History Miscellaneous Publication 52:1-247.

Martof, B. S., W. M. Palmer, J. R. Bailey, and J. R. Harrison, III. 1980. Amphibians and reptiles of the Carolinas and Virginia. University of North Carolina Press, Chapel Hill, North Carolina. 264 pp.

Mount, R. H. 1975. The Reptiles and Amphibians of Alabama. Auburn University Agricultural Experiment Station, Auburn, Alabama. vii + 347 pp.

Palmer, W. M., and A. L. Braswell. 1995. Reptiles of North Carolina. North Carolina State Museum of Natural Sciences, University of North Carolina Press, Chapel Hill, North Carolina.

Seigel, R. A., J. W. Gibbons, and T. K. Lynch. 1995. Temporal changes in reptile populations: effects of a severe drought on aquatic snakes. *Herpetologica* 51:424-434.

Wilson, L. A. 1995. *The Land Manager's Guide to the amphibians and reptiles of the South*. Chapel Hill, NC: The Nature Conservancy.

For more information:: SE-GAP Analysis Project / BaSIC
127 David Clark Labs
Dept. of Biology, NCSU
Raleigh, NC 27695-7617
(919) 513-2853
www.basic.ncsu.edu/segap

Compiled: 15 September 2011

This data was compiled and/or developed
by the Southeast GAP Analysis Project at
The Biodiversity and Spatial Information
Center, North Carolina State University.