



# SOUTHEAST GAP ANALYSIS PROJECT



## Species Modeling Report

### Wagner's Bonneted Bat

*Eumops glaucinus*

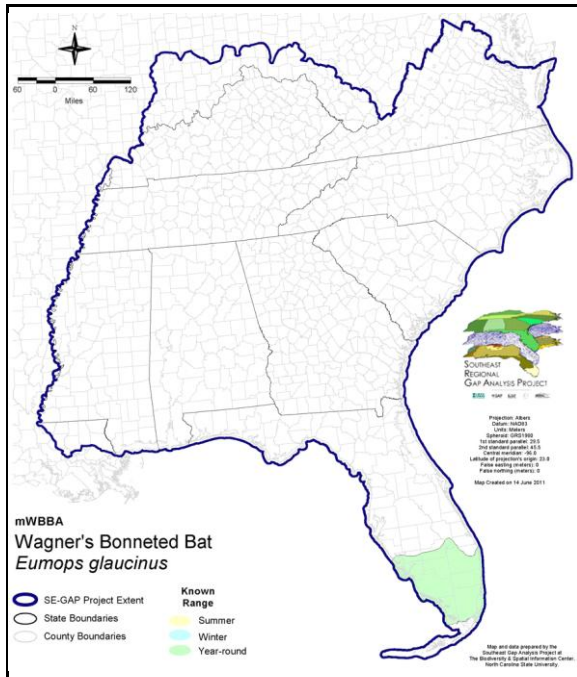
Taxa: Mammalian  
 Order: Chiroptera  
 Family: Molossidae

SE-GAP Spp Code: **mWBBA**

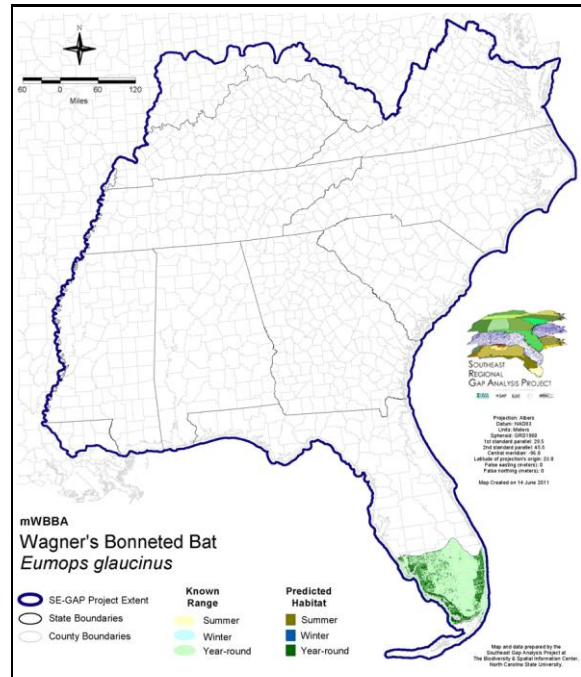
ITIS Species Code: 180079

NatureServe Element Code: AMACD02030

#### KNOWN RANGE:



#### PREDICTED HABITAT:



Range Map Link: [http://www.basic.ncsu.edu/segap/datazip/maps/SE\\_Range\\_mWBBA.pdf](http://www.basic.ncsu.edu/segap/datazip/maps/SE_Range_mWBBA.pdf)

Predicted Habitat Map Link: [http://www.basic.ncsu.edu/segap/datazip/maps/SE\\_Dist\\_mWBBA.pdf](http://www.basic.ncsu.edu/segap/datazip/maps/SE_Dist_mWBBA.pdf)

GAP Online Tool Link: <http://www.gapservice.ncsu.edu/segap/segap/index2.php?species=mWBBA>

Data Download: [http://www.basic.ncsu.edu/segap/datazip/region/vert/mWBBA\\_se00.zip](http://www.basic.ncsu.edu/segap/datazip/region/vert/mWBBA_se00.zip)

#### PROTECTION STATUS:

Reported on March 14, 2011

Federal Status: ---

State Status: ---

NS Global Rank: G5

NS State Rank: ---

**SUMMARY OF PREDICTED HABITAT BY MANAGMENT AND GAP PROTECTION STATUS:**

|          | US FWS                 |    | US Forest Service     |     | Tenn. Valley Author. |   | US DOD/ACOE           |     |
|----------|------------------------|----|-----------------------|-----|----------------------|---|-----------------------|-----|
|          | ha                     | %  | ha                    | %   | ha                   | % | ha                    | %   |
| Status 1 | 12,452.1               | 2  | 0.0                   | 0   | 0.0                  | 0 | 0.0                   | 0   |
| Status 2 | 0.0                    | 0  | 0.0                   | 0   | 0.0                  | 0 | 0.0                   | 0   |
| Status 3 | 0.0                    | 0  | 0.0                   | 0   | 0.0                  | 0 | 339.8                 | < 1 |
| Status 4 | 0.0                    | 0  | 0.0                   | 0   | 0.0                  | 0 | 0.0                   | 0   |
| Total    | 12,452.1               | 2  | 0.0                   | 0   | 0.0                  | 0 | 339.8                 | < 1 |
|          | US Dept. of Energy     |    | US Nat. Park Service  |     | NOAA                 |   | Other Federal Lands   |     |
|          | ha                     | %  | ha                    | %   | ha                   | % | ha                    | %   |
| Status 1 | 0.0                    | 0  | 168,379.7             | 22  | 0.0                  | 0 | 0.0                   | 0   |
| Status 2 | 0.0                    | 0  | 0.0                   | 0   | 11,204.6             | 1 | 0.0                   | 0   |
| Status 3 | 0.0                    | 0  | 22,592.8              | 3   | 0.0                  | 0 | 0.0                   | 0   |
| Status 4 | 0.0                    | 0  | 0.0                   | 0   | 0.0                  | 0 | 0.0                   | 0   |
| Total    | 0.0                    | 0  | 190,972.5             | 25  | 11,204.6             | 1 | 0.0                   | 0   |
|          | Native Am. Reserv.     |    | State Park/Hist. Park |     | State WMA/Gameland   |   | State Forest          |     |
|          | ha                     | %  | ha                    | %   | ha                   | % | ha                    | %   |
| Status 1 | 0.0                    | 0  | 0.0                   | 0   | 0.0                  | 0 | 0.0                   | 0   |
| Status 2 | 0.0                    | 0  | 0.0                   | 0   | 12,335.4             | 2 | 0.0                   | 0   |
| Status 3 | 0.0                    | 0  | 36,592.4              | 5   | 0.0                  | 0 | 16,978.6              | 2   |
| Status 4 | 0.0                    | 0  | 0.0                   | 0   | 0.0                  | 0 | 0.0                   | 0   |
| Total    | 0.0                    | 0  | 36,592.4              | 5   | 12,335.4             | 2 | 16,978.6              | 2   |
|          | State Coastal Reserve  |    | ST Nat.Area/Preserve  |     | Other State Lands    |   | Private Cons. Easemt. |     |
|          | ha                     | %  | ha                    | %   | ha                   | % | ha                    | %   |
| Status 1 | 0.0                    | 0  | 0.0                   | 0   | 0.0                  | 0 | 0.0                   | 0   |
| Status 2 | 0.0                    | 0  | 0.0                   | 0   | 0.0                  | 0 | 0.0                   | 0   |
| Status 3 | 0.0                    | 0  | 13.1                  | < 1 | 0.0                  | 0 | 813.6                 | < 1 |
| Status 4 | 0.0                    | 0  | 0.0                   | 0   | 0.0                  | 0 | 0.0                   | 0   |
| Total    | 0.0                    | 0  | 13.1                  | < 1 | 0.0                  | 0 | 813.6                 | < 1 |
|          | Private Land - No Res. |    | Water                 |     | Overall Total        |   |                       |     |
|          | ha                     | %  | ha                    | %   | ha                   | % | ha                    | %   |
| Status 1 | 0.0                    | 0  | 0.0                   | 0   | 180,831.9 23         |   |                       |     |
| Status 2 | 0.0                    | 0  | 0.0                   | 0   | 23,540.0 3           |   |                       |     |
| Status 3 | 0.0                    | 0  | 0.0                   | 0   | 77,330.3 10          |   |                       |     |
| Status 4 | 475,142.8              | 62 | 15,558.5              | 2   | 490,701.2 64         |   |                       |     |
| Total    | 475,142.8              | 62 | 15,558.5              | 2   | 772,403.4 100        |   |                       |     |

GAP Status 1: An area having permanent protection from conversion of natural land cover and a mandated management plan in operation to maintain a natural state within which disturbance events (of natural type, frequency, and intensity) are allowed to proceed without interference or are mimicked through management.

GAP Status 2: An area having permanent protection from conversion of natural land cover and a mandated management plan in operation to maintain a primarily natural state, but which may receive use or management practices that degrade the quality of existing natural communities.

GAP Status 3: An area having permanent protection from conversion of natural land cover for the majority of the area, but subject to extractive uses of either a broad, low-intensity type or localized intense type. It also confers protection to federally listed endangered and threatened species throughout the area.

GAP Status 4: Lack of irrevocable easement or mandate to prevent conversion of natural habitat types to anthropogenic habitat types. Allows for intensive use throughout the tract. Also includes those tracts for which the existence of such restrictions or sufficient information to establish a higher status is unknown.

## PREDICTED HABITAT MODEL(S):

### Year-round Model:

Habitat Description: Known in Florida only from area of Miami, Coral Gables, and Coconut Grove. Wagner's Bonneted Bat is an inhabitant of subtropical forests (i.e. mangroves, tropical hardwoods) and pine flatwoods (Best et al.1997). It roosts in buildings in areas with dense vegetation (Layne 1984), residential areas with lush exotic landscaping (Jennings 1958), in palm cavities, tile roof shingles, and longleaf pine cavities (FL-GAP 2003). In Florida, documented only from pine flatwoods and non-native habitats. Prefer forested habitat for foraging and roosting (FL-GAP 2003). Amy Silvano 22jun05

Ecosystem Classifiers: Urban, mangrove, hardwood hammocks. Amy Silvano 22jun05

### Selected Map Units:

| Functional Group               | Map Unit Name  |
|--------------------------------|--|
| Anthropogenic                  | Low Intensity Developed  |
| Anthropogenic                  | Medium Intensity Developed   |
| Brackish Tidal Marsh & Wetland | South Florida Mangrove Swamp   |
| Brackish Tidal Marsh & Wetland | Southwest Florida Perched Barriers Salt Swamp and Lagoon - Mangrove Modifier |
| Wetlands                       | South Florida Hardwood Hammock   |
| Wetlands                       | South Florida Pine Flatwoods   |
| Wetlands                       | Southern Coastal Plain Hydric Hammock  |

**CITATIONS:** Best, T.L., W. M. Kiser, and J. C. Rainey. 1997. *Eumop glaucinus*. Mammalian Species No. 551. Am. Soc. Mammal., New York.

Jennings, W. L. 1958. *The Ecological Distribution of Bats in Florida*. Gainesville, FL: University Press of Florida.

Layne, J. N. 1984. *The land mammals of South Florida. Environments of South Florida, Past and Present II*. P. J. Gleason ed. Coral Gables, Florida: Miami Geological Society; pp. 269-295.

For more information:: SE-GAP Analysis Project / BaSIC  
127 David Clark Labs  
Dept. of Biology, NCSU  
Raleigh, NC 27695-7617  
(919) 513-2853  
[www.basic.ncsu.edu/segap](http://www.basic.ncsu.edu/segap)

Compiled: 15 September 2011

This data was compiled and/or developed by the Southeast GAP Analysis Project at The Biodiversity and Spatial Information Center, North Carolina State University.