



# SOUTHEAST GAP ANALYSIS PROJECT



## Species Modeling Report

### Velvety Free-tailed Bat

*Molossus molossus*

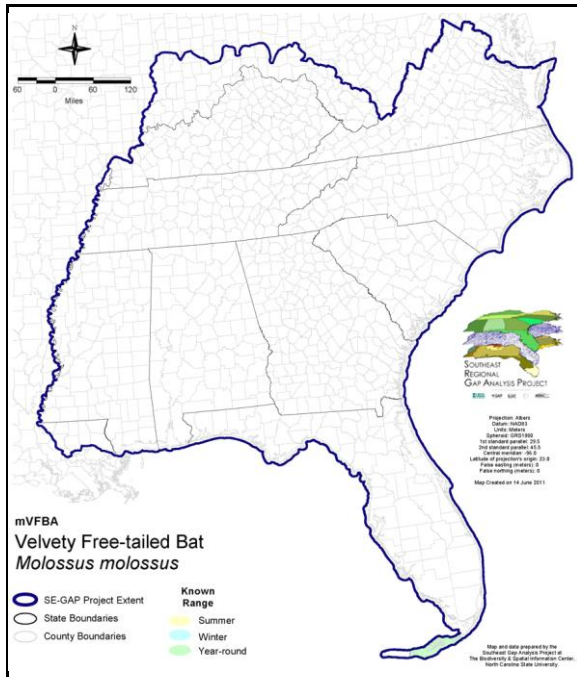
Taxa: Mammalian  
 Order: Chiroptera  
 Family: Molossidae

SE-GAP Spp Code: **mVFBA**

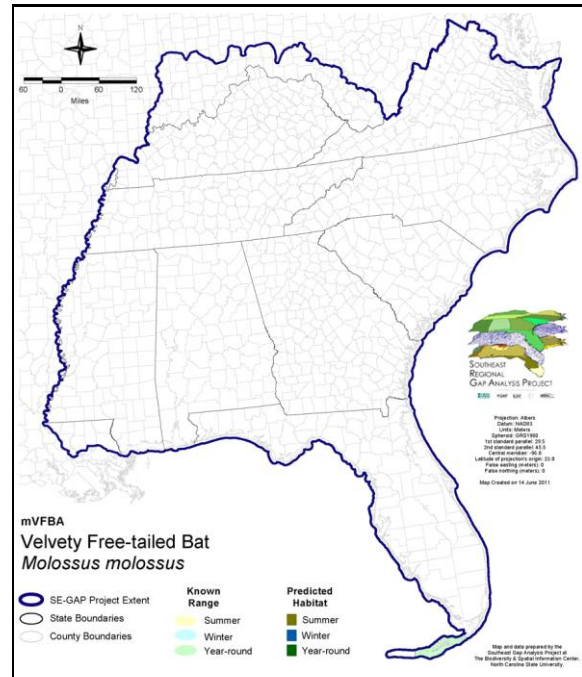
ITIS Species Code: 180083

NatureServe Element Code: AMACD03010

#### KNOWN RANGE:



#### PREDICTED HABITAT:



Range Map Link: [http://www.basic.ncsu.edu/segap/datazip/maps/SE\\_Range\\_mVFBA.pdf](http://www.basic.ncsu.edu/segap/datazip/maps/SE_Range_mVFBA.pdf)

Predicted Habitat Map Link: [http://www.basic.ncsu.edu/segap/datazip/maps/SE\\_Dist\\_mVFBA.pdf](http://www.basic.ncsu.edu/segap/datazip/maps/SE_Dist_mVFBA.pdf)

GAP Online Tool Link: <http://www.gapservice.ncsu.edu/segap/segap/index2.php?species=mVFBA>

Data Download: [http://www.basic.ncsu.edu/segap/datazip/region/vert/mVFBA\\_se00.zip](http://www.basic.ncsu.edu/segap/datazip/region/vert/mVFBA_se00.zip)

#### PROTECTION STATUS:

Federal Status: ---  
 State Status: ---  
 NS Global Rank: G5  
 NS State Rank: FL (S1S2)

Reported on March 14, 2011

**SUMMARY OF PREDICTED HABITAT BY MANAGMENT AND GAP PROTECTION STATUS:**

	US FWS		US Forest Service		Tenn. Valley Author.		US DOD/ACOE	
	ha	%	ha	%	ha	%	ha	%
Status 1	1,645.5	8	0.0	0	0.0	0	0.0	0
Status 2	0.0	0	0.0	0	0.0	0	0.0	0
Status 3	0.0	0	0.0	0	0.0	0	1,303.3	6
Status 4	0.0	0	0.0	0	0.0	0	0.0	0
Total	1,645.5	8	0.0	0	0.0	0	1,303.3	6
	US Dept. of Energy		US Nat. Park Service		NOAA		Other Federal Lands	
	ha	%	ha	%	ha	%	ha	%
Status 1	0.0	0	0.0	0	0.0	0	0.0	0
Status 2	0.0	0	0.0	0	0.0	0	0.0	0
Status 3	0.0	0	0.0	0	0.0	0	0.0	0
Status 4	0.0	0	0.0	0	0.0	0	0.0	0
Total	0.0	0	0.0	0	0.0	0	0.0	0
	Native Am. Reserv.		State Park/Hist. Park		State WMA/Gameland		State Forest	
	ha	%	ha	%	ha	%	ha	%
Status 1	0.0	0	0.0	0	0.0	0	0.0	0
Status 2	0.0	0	0.0	0	10.3	< 1	0.0	0
Status 3	0.0	0	201.4	< 1	0.0	0	0.0	0
Status 4	0.0	0	0.0	0	0.0	0	0.0	0
Total	0.0	0	201.4	< 1	10.3	< 1	0.0	0
	State Coastal Reserve		ST Nat.Area/Preserve		Other State Lands		Private Cons. Easemt.	
	ha	%	ha	%	ha	%	ha	%
Status 1	0.0	0	0.0	0	0.0	0	0.0	0
Status 2	0.0	0	0.0	0	0.0	0	0.0	0
Status 3	0.0	0	0.0	0	0.0	0	0.0	0
Status 4	0.0	0	0.0	0	0.0	0	0.0	0
Total	0.0	0	0.0	0	0.0	0	0.0	0
	Private Land - No Res.		Water		Overall Total			
	ha	%	ha	%	ha	%	ha	%
Status 1	0.0	0	0.0	0	1,645.5 8			
Status 2	0.0	0	0.0	0	10.3 < 1			
Status 3	0.0	0	0.0	0	1,504.7 7			
Status 4	14,832.9	73	2,435.0	12	17,267.9 85			
Total	14,832.9	73	2,435.0	12	20,428.3 100			

GAP Status 1: An area having permanent protection from conversion of natural land cover and a mandated management plan in operation to maintain a natural state within which disturbance events (of natural type, frequency, and intensity) are allowed to proceed without interference or are mimicked through management.

GAP Status 2: An area having permanent protection from conversion of natural land cover and a mandated management plan in operation to maintain a primarily natural state, but which may receive use or management practices that degrade the quality of existing natural communities.

GAP Status 3: An area having permanent protection from conversion of natural land cover for the majority of the area, but subject to extractive uses of either a broad, low-intensity type or localized intense type. It also confers protection to federally listed endangered and threatened species throughout the area.

GAP Status 4: Lack of irrevocable easement or mandate to prevent conversion of natural habitat types to anthropogenic habitat types. Allows for intensive use throughout the tract. Also includes those tracts for which the existence of such restrictions or sufficient information to establish a higher status is unknown.

## PREDICTED HABITAT MODEL(S):

### Year-round Model:

Habitat Description: *Molossus molossus* is known from three colonies in the Florida Keys, Stock Island, Boca Chica, and Marathon where the females form nursery colonies in buildings, hollow trees, and caves (Whitaker and Hamilton 1998). They forage and roost in moist tropical evergreen forests as well as dry tropical deciduous forests (Brown 1997, Whitaker and Hamilton 1998). Amy Silvano 22jun05

Ecosystem Classifiers: Urban, mangrove and tropical hardwoods. Amy Silvano 22jun05

### Selected Map Units:

Functional Group	Map Unit Name
Anthropogenic	High Intensity Developed
Anthropogenic	Low Intensity Developed
Anthropogenic	Medium Intensity Developed
Brackish Tidal Marsh & Wetland	South Florida Mangrove Swamp
Brackish Tidal Marsh & Wetland	Southwest Florida Perched Barriers Salt Swamp and Lagoon - Mangrove Modifier
Wetlands	South Florida Hardwood Hammock

**CITATIONS:** Brown, L. N. 1997. A guide to the mammals of the southeastern United States. University of Tennessee Press, Knoxville. xiv + 236 pp.  
Whitaker, J.O. Jr. and W.J. Hamilton, Jr. 1998. Mammals of the eastern United States. Cornell Univ. Press, Ithaca, New York. 583 pp.

For more information:: SE-GAP Analysis Project / BaSIC  
127 David Clark Labs  
Dept. of Biology, NCSU  
Raleigh, NC 27695-7617  
(919) 513-2853  
[www.basic.ncsu.edu/segap](http://www.basic.ncsu.edu/segap)

Compiled: 15 September 2011

This data was compiled and/or developed by the Southeast GAP Analysis Project at The Biodiversity and Spatial Information Center, North Carolina State University.