



SOUTHEAST GAP ANALYSIS PROJECT



Species Modeling Report

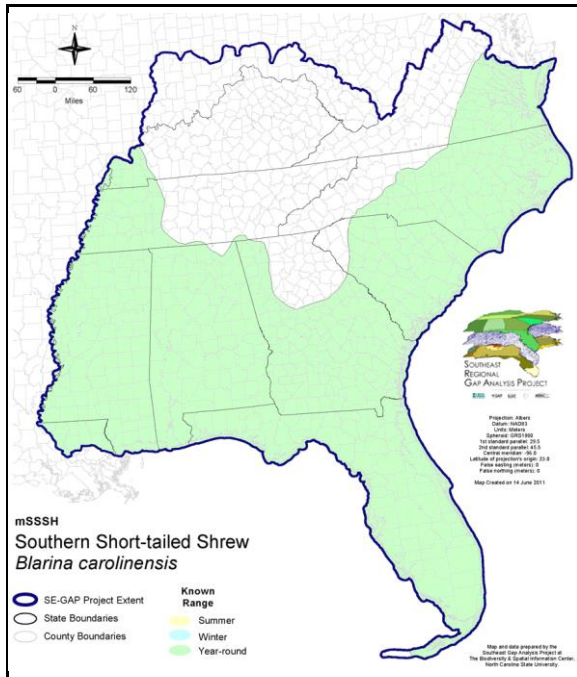
Southern Short-tailed Shrew

Blarina carolinensis

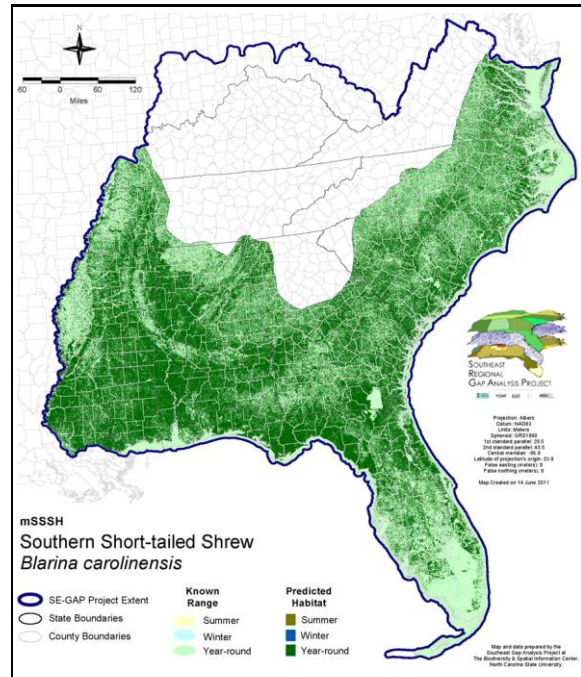
Taxa: Mammalian
 Order: Soricomorpha
 Family: Soricidae

SE-GAP Spp Code: **mSSSH**
 ITIS Species Code: 179968
 NatureServe Element Code: AMABA03020

KNOWN RANGE:



PREDICTED HABITAT:



Range Map Link: http://www.basic.ncsu.edu/segap/datazip/maps/SE_Range_mSSSH.pdf

Predicted Habitat Map Link: http://www.basic.ncsu.edu/segap/datazip/maps/SE_Dist_mSSSH.pdf

GAP Online Tool Link: <http://www.gapservice.ncsu.edu/segap/segap/index2.php?species=mSSSH>

Data Download: http://www.basic.ncsu.edu/segap/datazip/region/vert/mSSSH_se00.zip

PROTECTION STATUS:

Reported on March 14, 2011

Federal Status: ---

State Status: KY (N), MS (Non-game species in need of management)

NS Global Rank: G5

NS State Rank: AL (S5), AR (S5), FL (SNR), GA (S5), IL (S5), KY (S5), LA (S4), MS (S5), NC (S5), OK (S3), SC (SNR), TX (S4), VA (S5)

SUMMARY OF PREDICTED HABITAT BY MANAGMENT AND GAP PROTECTION STATUS:

	US FWS		US Forest Service		Tenn. Valley Author.		US DOD/ACOE	
	ha	%	ha	%	ha	%	ha	%
Status 1	89,773.8	< 1	4,916.8	< 1	0.0	0	0.0	0
Status 2	184,069.8	< 1	102,955.1	< 1	0.0	0	2,582.9	< 1
Status 3	2,237.6	< 1	1,270,068.3	3	22,291.3	< 1	607,234.1	1
Status 4	43.0	< 1	< 0.1	< 1	0.0	0	102.6	< 1
Total	276,124.2	< 1	1,377,940.2	3	22,291.3	< 1	609,919.7	1
	US Dept. of Energy		US Nat. Park Service		NOAA		Other Federal Lands	
	ha	%	ha	%	ha	%	ha	%
Status 1	0.0	0	21,227.5	< 1	109.8	< 1	13,592.9	< 1
Status 2	0.0	0	12,025.1	< 1	13,371.8	< 1	63.3	< 1
Status 3	67,981.5	< 1	28,378.6	< 1	0.0	0	7,193.3	< 1
Status 4	0.0	0	1.0	3	0.0	0	0.0	0
Total	67,981.5	< 1	61,632.7	< 1	13,481.6	< 1	20,849.5	< 1
	Native Am. Reserv.		State Park/Hist. Park		State WMA/Gameland		State Forest	
	ha	%	ha	%	ha	%	ha	%
Status 1	0.0	0	1,316.1	< 1	0.0	0	0.0	0
Status 2	0.0	0	6,244.7	< 1	517,263.4	1	21.8	< 1
Status 3	8,279.9	< 1	549,033.1	1	136,943.9	< 1	366,024.6	< 1
Status 4	0.0	0	< 0.1	< 1	122,384.7	< 1	49.0	< 1
Total	8,279.9	< 1	556,594.0	1	776,592.0	2	366,095.3	< 1
	State Coastal Reserve		ST Nat.Area/Preserve		Other State Lands		Private Cons. Easemt.	
	ha	%	ha	%	ha	%	ha	%
Status 1	0.0	0	4,049.7	< 1	0.0	0	0.0	0
Status 2	8,631.3	< 1	46,994.3	< 1	0.0	0	3,558.5	< 1
Status 3	0.0	0	24,365.7	< 1	32,710.9	< 1	128,411.3	< 1
Status 4	0.0	0	0.0	0	1,377.9	< 1	0.0	0
Total	8,631.3	< 1	75,409.7	< 1	34,088.8	< 1	131,969.8	< 1
	Private Land - No Res.		Water		Overall Total			
	ha	%	ha	%	ha	%		
Status 1	0.0	0	0.0	0	134,986.6	< 1		
Status 2	0.2	< 1	0.0	3	897,782.2	2		
Status 3	1,286.7	< 1	1.1	< 1	3,252,442.0	10		
Status 4	41,618,018.2	88	53,012.0	< 1	41,917,330.7	88		
Total	41,619,305.1	88	53,013.2	< 1	46,202,541.5	100		

GAP Status 1: An area having permanent protection from conversion of natural land cover and a mandated management plan in operation to maintain a natural state within which disturbance events (of natural type, frequency, and intensity) are allowed to proceed without interference or are mimicked through management.

GAP Status 2: An area having permanent protection from conversion of natural land cover and a mandated management plan in operation to maintain a primarily natural state, but which may receive use or management practices that degrade the quality of existing natural communities.

GAP Status 3: An area having permanent protection from conversion of natural land cover for the majority of the area, but subject to extractive uses of either a broad, low-intensity type or localized intense type. It also confers protection to federally listed endangered and threatened species throughout the area.

GAP Status 4: Lack of irrevocable easement or mandate to prevent conversion of natural habitat types to anthropogenic habitat types. Allows for intensive use throughout the tract. Also includes those tracts for which the existence of such restrictions or sufficient information to establish a higher status is unknown.

PREDICTED HABITAT MODEL(S):

Year-round Model:

Habitat Description: The southern short-tailed shrew occurs in a variety of upland and wetland habitats, but is primarily found in damp woods (Whitaker and Hamilton 1998). Deep leaf litter and humus layers of wooded areas are important habitat features. However, *B. carolinensis* can utilize root mats of grassy or dense shrubby areas in more open habitats, such as grassy fields, bogs, meadows and tidal marshes (Webster et al. 1985). The southern short-tailed shrew was formerly *B. brevicauda*. They can be found in every available type of land habitat, although they are less common on high, dry areas with a scant cover of vegetation than they are in the woods or in moist lowlands. Other habitats include mesic hammocks, bayheads, mesic flatwoods, sawgrass ecotone, mangrove ecotone, grassy drainage ditches (Layne 1984). They make their own burrow systems or take over the burrows of microtines and moles. Nest sites are probably under logs, stumps and other debris. The normal home range of this species probably is about 50 yards in diameter and covers about 0.4 acres (Burt 1940). Breeding occurs from spring to late summer. Gestation probably lasts 21-30 days. Litter size is 5-7 with 2-3 or more litters per year. Few live as long as 2 years. Stacy Smith, 12June05

Selected Map Units:

Functional Group	Map Unit Name
Anthropogenic	Deciduous Plantations
Anthropogenic	Developed Open Space
Anthropogenic	Evergreen Plantations
Anthropogenic	Successional Grassland/Herbaceous
Anthropogenic	Successional Grassland/Herbaceous (Other)
Anthropogenic	Successional Grassland/Herbaceous (Utility Swath)
Anthropogenic	Successional Shrub/Scrub (Clear Cut)
Anthropogenic	Successional Shrub/Scrub (Other)
Anthropogenic	Successional Shrub/Scrub (Utility Swath)
Forest/Woodland	Allegheny-Cumberland Dry Oak Forest and Woodland - Pine Modifier
Forest/Woodland	Atlantic Coastal Plain Central Maritime Forest
Forest/Woodland	Atlantic Coastal Plain Dry and Dry-Mesic Oak Forest
Forest/Woodland	Atlantic Coastal Plain Fall-Line Sandhills Longleaf Pine Woodland - Loblolly Modifier
Forest/Woodland	Atlantic Coastal Plain Fall-line Sandhills Longleaf Pine Woodland - Offsite Hardwood Modifier
Forest/Woodland	Atlantic Coastal Plain Fall-line Sandhills Longleaf Pine Woodland - Open Understory Modifier
Forest/Woodland	Atlantic Coastal Plain Fall-line Sandhills Longleaf Pine Woodland - Scrub/Shrub Understory Modifier
Forest/Woodland	Atlantic Coastal Plain Mesic Hardwood and Mixed Forest
Forest/Woodland	Atlantic Coastal Plain Northern Maritime Forest
Forest/Woodland	Atlantic Coastal Plain Northern Mixed Oak-Heath Forest
Forest/Woodland	Atlantic Coastal Plain Southern Maritime Forest
Forest/Woodland	Atlantic Coastal Plain Upland Longleaf Pine Woodland
Forest/Woodland	Central Appalachian Oak and Pine Forest
Forest/Woodland	East Gulf Coastal Plain Black Belt Calcareous Prairie and Woodland - Woodland Modifier
Forest/Woodland	East Gulf Coastal Plain Interior Shortleaf Pine-Oak Forest - Hardwood Modifier
Forest/Woodland	East Gulf Coastal Plain Interior Shortleaf Pine-Oak Forest - Mixed Modifier
Forest/Woodland	East Gulf Coastal Plain Interior Shortleaf Pine-Oak Forest - Pine Modifier
Forest/Woodland	East Gulf Coastal Plain Interior Upland Longleaf Pine Woodland - Loblolly Modifier
Forest/Woodland	East Gulf Coastal Plain Interior Upland Longleaf Pine Woodland - Offsite Hardwood Modifier
Forest/Woodland	East Gulf Coastal Plain Interior Upland Longleaf Pine Woodland - Open Understory Modifier
Forest/Woodland	East Gulf Coastal Plain Interior Upland Longleaf Pine Woodland - Scrub/Shrub Modifier
Forest/Woodland	East Gulf Coastal Plain Limestone Forest
Forest/Woodland	East Gulf Coastal Plain Maritime Forest
Forest/Woodland	East Gulf Coastal Plain Northern Dry Upland Hardwood Forest
Forest/Woodland	East Gulf Coastal Plain Northern Dry Upland Hardwood Forest - Offsite Pine Modifier
Forest/Woodland	East Gulf Coastal Plain Northern Loess Bluff Forest
Forest/Woodland	East Gulf Coastal Plain Northern Loess Plain Oak-Hickory Upland - Hardwood Modifier
Forest/Woodland	East Gulf Coastal Plain Northern Loess Plain Oak-Hickory Upland - Juniper Modifier
Forest/Woodland	East Gulf Coastal Plain Northern Mesic Hardwood Forest

Forest/Woodland	East Gulf Coastal Plain Southern Loess Bluff Forest
Forest/Woodland	East Gulf Coastal Plain Southern Mesic Slope Forest
Forest/Woodland	Florida Longleaf Pine Sandhill - Open Understory Modifier
Forest/Woodland	Florida Longleaf Pine Sandhill - Scrub/Shrub Understory Modifier
Forest/Woodland	Mississippi Delta Maritime Forest
Forest/Woodland	Northeastern Interior Dry Oak Forest - Virginia/Pitch Pine Modifier
Forest/Woodland	Northern Atlantic Coastal Plain Dry Hardwood Forest
Forest/Woodland	South-Central Interior Mesophytic Forest
Forest/Woodland	Southeast Florida Coastal Strand and Maritime Hammock
Forest/Woodland	Southeastern Interior Longleaf Pine Woodland
Forest/Woodland	Southern Appalachian Low Mountain Pine Forest
Forest/Woodland	Southern Coastal Plain Dry Upland Hardwood Forest
Forest/Woodland	Southern Piedmont Dry Oak-(Pine) Forest - Loblolly Pine Modifier
Forest/Woodland	Southern Piedmont Dry Oak-Heath Forest - Virginia/Pitch Pine Modifier
Forest/Woodland	Southern Piedmont Mesic Forest
Forest/Woodland	Southern Ridge and Valley Dry Calcareous Forest
Forest/Woodland	Southern Ridge and Valley Dry Calcareous Forest - Hardwood Modifier
Forest/Woodland	Southern Ridge and Valley Dry Calcareous Forest - Pine Modifier
Forest/Woodland	Southwest Florida Coastal Strand and Maritime Hammock
Freshwater Tidal Marsh & Wetland	Atlantic Coastal Plain Central Fresh-Oligohaline Tidal Marsh
Freshwater Tidal Marsh & Wetland	Atlantic Coastal Plain Embayed Region Tidal Freshwater Marsh
Freshwater Tidal Marsh & Wetland	Atlantic Coastal Plain Northern Fresh and Oligohaline Tidal Marsh
Freshwater Tidal Marsh & Wetland	Florida Big Bend Fresh-Oligohaline Tidal Marsh
Prairie	Bluegrass Basin Savanna and Woodland
Prairie	East Gulf Coastal Plain Black Belt Calcareous Prairie and Woodland
Prairie	East Gulf Coastal Plain Black Belt Calcareous Prairie and Woodland - Herbaceous Modifier
Prairie	East Gulf Coastal Plain Jackson Plain Prairie and Barrens
Prairie	East Gulf Coastal Plain Jackson Prairie and Woodland
Prairie	Eastern Highland Rim Prairie and Barrens
Prairie	Eastern Highland Rim Prairie and Barrens - Dry Modifier
Prairie	Panhandle Florida Limestone Glade
Prairie	Pennyroyal Karst Plain Prairie and Barrens
Prairie	Southern Ridge and Valley Patch Prairie
Prairie	Western Highland Rim Prairie and Barrens
Wetlands	Atlantic Coastal Plain Brownwater Stream Floodplain Forest
Wetlands	Atlantic Coastal Plain Clay-Based Carolina Bay Forested Wetland
Wetlands	Atlantic Coastal Plain Clay-Based Carolina Bay Herbaceous Wetland
Wetlands	Atlantic Coastal Plain Depression Pondshore
Wetlands	Atlantic Coastal Plain Nonriverine Swamp and Wet Hardwood Forest - Taxodium/Nyssa Modifier
Wetlands	Atlantic Coastal Plain Nonriverine Swamp and Wet Hardwood Forest - Oak Dominated Modifier
Wetlands	Atlantic Coastal Plain Northern Basin Peat Swamp
Wetlands	Atlantic Coastal Plain Northern Basin Swamp and Wet Hardwood Forest
Wetlands	Atlantic Coastal Plain Northern Wet Longleaf Pine Savanna and Flatwoods
Wetlands	Atlantic Coastal Plain Sandhill Seep
Wetlands	Atlantic Coastal Plain Small Brownwater River Floodplain Forest
Wetlands	Atlantic Coastal Plain Southern Wet Pine Savanna and Flatwoods
Wetlands	Central Florida Herbaceous Pondshore
Wetlands	Central Florida Herbaceous Seep
Wetlands	Central Florida Pine Flatwoods
Wetlands	East Gulf Coastal Plain Interior Shrub Bog
Wetlands	East Gulf Coastal Plain Jackson Plain Dry Flatwoods - Open Understory Modifier
Wetlands	East Gulf Coastal Plain Jackson Plain Dry Flatwoods - Scrub/Shrub Understory Modifier
Wetlands	East Gulf Coastal Plain Large River Floodplain Forest - Forest Modifier
Wetlands	East Gulf Coastal Plain Large River Floodplain Forest - Herbaceous Modifier
Wetlands	East Gulf Coastal Plain Near-Coast Pine Flatwoods - Offsite Hardwood Modifier
Wetlands	East Gulf Coastal Plain Near-Coast Pine Flatwoods - Open Understory Modifier

Wetlands	East Gulf Coastal Plain Near-Coast Pine Flatwoods - Scrub/Shrub Understory Modifier
Wetlands	East Gulf Coastal Plain Northern Depression Pondshore
Wetlands	East Gulf Coastal Plain Northern Seepage Swamp
Wetlands	East Gulf Coastal Plain Small Stream and River Floodplain Forest
Wetlands	East Gulf Coastal Plain Southern Depression Pondshore
Wetlands	East Gulf Coastal Plain Southern Loblolly-Hardwood Flatwoods
Wetlands	East Gulf Coastal Plain Treeless Savanna and Wet Prairie
Wetlands	Floridian Highlands Freshwater Marsh
Wetlands	Lower Mississippi River Bottomland and Floodplain Forest
Wetlands	Lower Mississippi River Bottomland Depressions - Forest Modifier
Wetlands	Lower Mississippi River Bottomland Depressions - Herbaceous Modifier
Wetlands	Mississippi River Low Floodplain (Bottomland) Forest
Wetlands	Mississippi River Riparian Forest
Wetlands	South-Central Interior Large Floodplain - Forest Modifier
Wetlands	South-Central Interior Large Floodplain - Herbaceous Modifier
Wetlands	South-Central Interior Small Stream and Riparian
Wetlands	South-Central Interior/Upper Coastal Plain Wet Flatwoods
Wetlands	Southern Coastal Plain Blackwater River Floodplain Forest
Wetlands	Southern Coastal Plain Herbaceous Seepage Bog
Wetlands	Southern Coastal Plain Hydric Hammock
Wetlands	Southern Coastal Plain Nonriverine Basin Swamp
Wetlands	Southern Coastal Plain Nonriverine Cypress Dome
Wetlands	Southern Coastal Plain Seepage Swamp and Baygall
Wetlands	Southern Coastal Plain Spring-run Stream Aquatic Vegetation
Wetlands	Southern Piedmont Large Floodplain Forest - Forest Modifier
Wetlands	Southern Piedmont Large Floodplain Forest - Herbaceous Modifier
Wetlands	Southern Piedmont Seepage Wetland
Wetlands	Southern Piedmont Small Floodplain and Riparian Forest
Wetlands	Southern Piedmont/Ridge and Valley Upland Depression Swamp
Wetlands	Western Highland Rim Seepage Fen

CITATIONS: Baumgardner, G. D., N. O. Dronen, and D. J. Schmidly. 1992. Distributional status of short-tailed shrews (genus *BLARINA*) in Texas. *Southwest. Nat.* 37:326-328.

Brown, L. N. 1997. A guide to the mammals of the southeastern United States. University of Tennessee Press, Knoxville. xiv + 236 pp.

French, T. W. 1981. Notes on the distribution and taxonomy of short-tailed shrews (genus *BLARINA*) in the southeast. *Brimleyana* (6):101-110.

George, S. B., J. R. Choate, and H. H. Genoways. 1986. *Blarina brevicauda*. *Mammalian Species* 261:1-9.

Hall, E. R. 1981. *The Mammals of North America*. Second edition. 2 Volumes. John Wiley and Sons, New York, New York. 1181 p.

Hamilton, William J., Jr., and John O. Whitaker, Jr. 1979. *Mammals of the eastern United States*. Cornell Univ. Press, Ithaca, New York. 346 pp.

Jones, J. K., Jr., et al. 1992. Revised checklist of North American mammals north of Mexico, 1991. *Occas. Pap. Mus., Texas Tech Univ.* (146):1-23.

McCay, T.S. 2001. *Blarina carolinensis*. *American Society of Mammalogists, Mammalian Species No. 673* pp. 1-7.

Rose, R. K. 1992. The effects of habitat fragmentation and loss on Dismal Swamp mammals. *Virginia Journal of Science* 43:187-196.

Webster, W. D. 1996. Geographic variation in *Blarina brevicauda* (Insectivora: Soricidae) from eastern North Carolina, with description of a new subspecies. Pp. 47-56 in *Contributions in mammalogy: a memorial volume honoring J. Knox Jones, Jr.* (H. H. Genoway)

Webster, W. D., J. F. Parnell and W. C. Biggs Jr. 1985. *Mammals of the Carolinas, Virginia, and Maryland*. The University of North Carolina Press, Chapel Hill, NC.

Whitaker, J.O. Jr. and W.J. Hamilton, Jr. 1998. *Mammals of the eastern United States*. Cornell Univ. Press, Ithaca, New York. 583 pp.

Wilson, D. E., and D. M. Reeder (editors). 1993. *Mammal Species of the World: a Taxonomic and Geographic Reference*. Second Edition. Smithsonian Institution Press, Washington, DC. xviii + 1206 pp.

For more information:: SE-GAP Analysis Project / BaSIC
127 David Clark Labs
Dept. of Biology, NCSU
Raleigh, NC 27695-7617
(919) 513-2853
www.basic.ncsu.edu/segap

Compiled: 15 September 2011

This data was compiled and/or developed
by the Southeast GAP Analysis Project at
The Biodiversity and Spatial Information
Center, North Carolina State University.