



SOUTHEAST GAP ANALYSIS PROJECT



Species Modeling Report

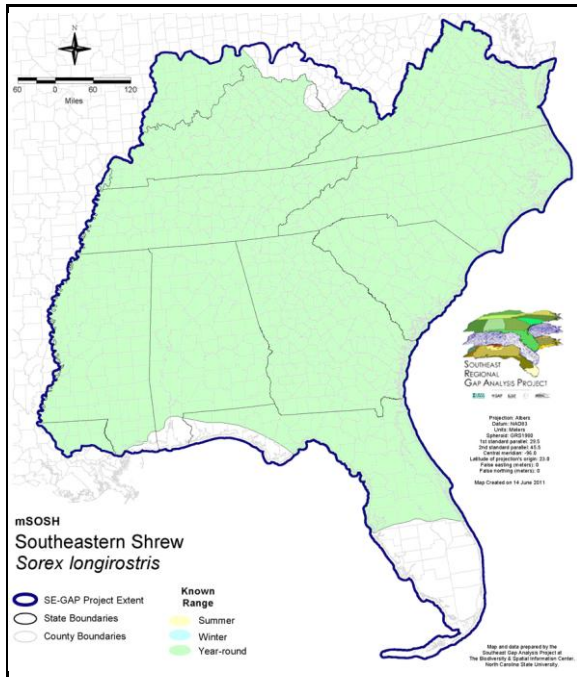
Southeastern Shrew

Sorex longirostris

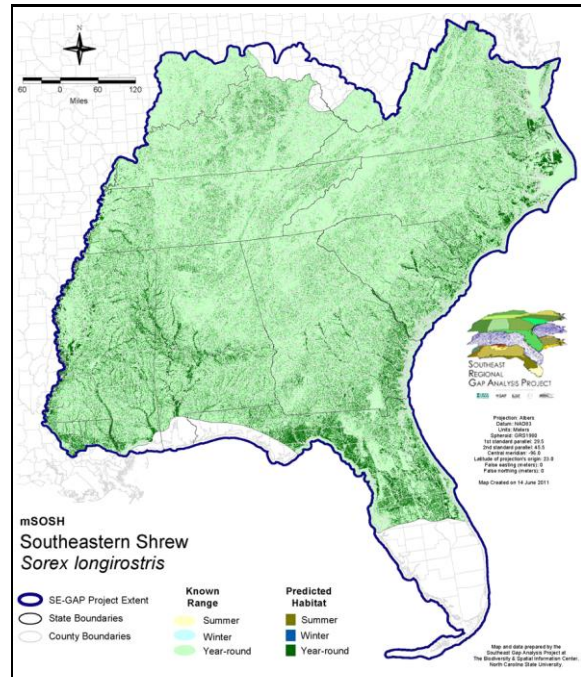
Taxa: Mammalian
 Order: Soricomorpha
 Family: Soricidae

SE-GAP Spp Code: **mSOSH**
 ITIS Species Code: 179936
 NatureServe Element Code: AMABA01060

KNOWN RANGE:



PREDICTED HABITAT:



Range Map Link: http://www.basic.ncsu.edu/segap/datazip/maps/SE_Range_mSOSH.pdf

Predicted Habitat Map Link: http://www.basic.ncsu.edu/segap/datazip/maps/SE_Dist_mSOSH.pdf

GAP Online Tool Link: <http://www.gapservice.ncsu.edu/segap/segap/index2.php?species=mSOSH>

Data Download: http://www.basic.ncsu.edu/segap/datazip/region/vert/mSOSH_se00.zip

PROTECTION STATUS:

Reported on March 14, 2011

Federal Status: ---

State Status: KY (N), MS (Non-game species in need of management), TN (D)

NS Global Rank: G5

NS State Rank: AL (S4), AR (S2), DC (S3), FL (S5), GA (S4), IL (S3S4), IN (S3), KY (S4), LA (S2S3), MD (S3S4), MO (S4), MS (S4), NC (S4), SC (SNR), TN (S4), VA (S5), WV (SU)

SUMMARY OF PREDICTED HABITAT BY MANAGMENT AND GAP PROTECTION STATUS:

	US FWS		US Forest Service		Tenn. Valley Author.		US DOD/ACOE	
	ha	%	ha	%	ha	%	ha	%
Status 1	81,320.5	< 1	5,779.4	< 1	0.0	0	0.0	0
Status 2	186,741.4	< 1	36,712.9	< 1	0.0	0	1,987.7	< 1
Status 3	1,381.4	< 1	386,363.3	2	18,075.4	< 1	134,871.9	< 1
Status 4	36.4	< 1	0.0	0	0.0	0	13.2	< 1
Total	269,479.6	1	428,855.5	2	18,075.4	< 1	136,872.8	< 1
	US Dept. of Energy		US Nat. Park Service		NOAA		Other Federal Lands	
	ha	%	ha	%	ha	%	ha	%
Status 1	0.0	0	10,175.3	< 1	22.7	< 1	8,748.1	< 1
Status 2	0.0	0	3,914.1	< 1	3,095.4	< 1	0.0	0
Status 3	16,662.5	< 1	9,223.1	< 1	0.0	0	3,143.9	< 1
Status 4	0.0	0	0.0	0	0.0	0	0.0	0
Total	16,662.5	< 1	23,312.5	< 1	3,118.1	< 1	11,892.0	< 1
	Native Am. Reserv.		State Park/Hist. Park		State WMA/Gameland		State Forest	
	ha	%	ha	%	ha	%	ha	%
Status 1	0.0	0	136.8	< 1	5.8	< 1	0.0	0
Status 2	0.0	0	1,059.5	< 1	294,425.0	1	31.8	< 1
Status 3	2,587.6	< 1	302,318.6	1	103,583.4	< 1	135,068.0	< 1
Status 4	0.0	0	< 0.1	< 1	16,281.6	< 1	8.6	< 1
Total	2,587.6	< 1	303,514.9	1	414,295.8	2	135,108.5	< 1
	State Coastal Reserve		ST Nat.Area/Preserve		Other State Lands		Private Cons. Easemt.	
	ha	%	ha	%	ha	%	ha	%
Status 1	0.0	0	1,573.1	< 1	0.0	0	0.0	0
Status 2	12,285.0	< 1	43,960.1	< 1	2.7	< 1	961.6	< 1
Status 3	0.0	0	17,019.6	< 1	9,721.5	< 1	88,625.3	< 1
Status 4	0.0	0	0.0	0	1,495.1	< 1	< 0.1	< 1
Total	12,285.0	< 1	62,552.8	< 1	11,219.3	< 1	89,586.9	< 1
	Private Land - No Res.		Water		Overall Total			
	ha	%	ha	%	ha	%		
Status 1	0.0	0	0.0	0	107,761.6	< 1		
Status 2	0.0	0	0.0	0	585,176.9	3		
Status 3	590.0	< 1	0.0	0	1,229,235.6	8		
Status 4	18,012,346.0	88	21,329.8	< 1	18,067,756.2	89		
Total	18,012,936.1	88	21,329.8	< 1	19,989,930.3	100		

GAP Status 1: An area having permanent protection from conversion of natural land cover and a mandated management plan in operation to maintain a natural state within which disturbance events (of natural type, frequency, and intensity) are allowed to proceed without interference or are mimicked through management.

GAP Status 2: An area having permanent protection from conversion of natural land cover and a mandated management plan in operation to maintain a primarily natural state, but which may receive use or management practices that degrade the quality of existing natural communities.

GAP Status 3: An area having permanent protection from conversion of natural land cover for the majority of the area, but subject to extractive uses of either a broad, low-intensity type or localized intense type. It also confers protection to federally listed endangered and threatened species throughout the area.

GAP Status 4: Lack of irrevocable easement or mandate to prevent conversion of natural habitat types to anthropogenic habitat types. Allows for intensive use throughout the tract. Also includes those tracts for which the existence of such restrictions or sufficient information to establish a higher status is unknown.

PREDICTED HABITAT MODEL(S):

Year-round Model:

Habitat Description: Southeastern shrews are found in moist, forested conditions, often near, but not restricted to, water bodies (Whitaker and Hamilton 1998). They are perhaps most abundant in moist habitats with a dense ground cover of plants tangles of vines such as wooded swamps, marshes, and floodplain forest. Occasionally they are found in upland habitats such as old fields, loblolly pine plantations xeric hammock, sandpine scrub, pine flatwoods, and sandhills (Layne et al. 1977). Southeastern shrews are fossorial mammals that spend much of their time in underground burrows and in leaf litter. Its range rarely overlaps that of *S. cinereus*. Once considered rare, *S. longirostris* is generally uncommon, but is abundant in localized areas. The young are born from April through October. The litter size is 1-6 (average around 4) with 1-3 litters per year. Gestation probably lasts 2 - 3 weeks (if same as other shrews). Little is known about this species' life cycle. Stacy Smith, 12June05

*** French (1980) reviewed all research on *S. longirostris* from museum specimens across the southeast. He state that there is much disagreement about habitat relationships and that specimens were taken from upland areas and wetland habitat types.

Elevation Mask: < 760m

Hydrography Mask:

Utilizes flowing water features with buffer of 120m from selected water features.

Utilizes open water features with buffer of 120m from selected water features.

Utilizes wet vegetation features with buffers of 120m from and unlimited into selected vegetation features.

Selected Map Units:

Functional Group	Map Unit Name
Anthropogenic	Pasture/Hay
Anthropogenic	Successional Grassland/Herbaceous
Anthropogenic	Successional Grassland/Herbaceous (Other)
Anthropogenic	Successional Grassland/Herbaceous (Utility Swath)
Anthropogenic	Successional Shrub/Scrub (Clear Cut)
Anthropogenic	Successional Shrub/Scrub (Other)
Anthropogenic	Successional Shrub/Scrub (Utility Swath)
Forest/Woodland	Atlantic Coastal Plain Mesic Hardwood and Mixed Forest
Forest/Woodland	East Gulf Coastal Plain Black Belt Calcareous Prairie and Woodland - Woodland Modifier
Forest/Woodland	East Gulf Coastal Plain Northern Loess Bluff Forest
Forest/Woodland	East Gulf Coastal Plain Northern Mesic Hardwood Forest
Forest/Woodland	East Gulf Coastal Plain Southern Loess Bluff Forest
Forest/Woodland	East Gulf Coastal Plain Southern Mesic Slope Forest
Forest/Woodland	Florida Peninsula Inland Scrub
Forest/Woodland	Southern Piedmont Mesic Forest
Prairie	Bluegrass Basin Savanna and Woodland
Prairie	East Gulf Coastal Plain Black Belt Calcareous Prairie and Woodland
Prairie	East Gulf Coastal Plain Black Belt Calcareous Prairie and Woodland - Herbaceous Modifier
Prairie	East Gulf Coastal Plain Jackson Prairie and Woodland
Prairie	Eastern Highland Rim Prairie and Barrens
Prairie	Eastern Highland Rim Prairie and Barrens - Dry Modifier
Prairie	Pennyroyal Karst Plain Prairie and Barrens
Prairie	Southern Ridge and Valley Patch Prairie
Wetlands	Atlantic Coastal Plain Blackwater Stream Floodplain Forest - Forest Modifier
Wetlands	Atlantic Coastal Plain Blackwater Stream Floodplain Forest - Herbaceous Modifier
Wetlands	Atlantic Coastal Plain Brownwater Stream Floodplain Forest
Wetlands	Atlantic Coastal Plain Clay-Based Carolina Bay Forested Wetland
Wetlands	Atlantic Coastal Plain Clay-Based Carolina Bay Herbaceous Wetland
Wetlands	Atlantic Coastal Plain Depression Pondshore
Wetlands	Atlantic Coastal Plain Large Natural Lakeshore
Wetlands	Atlantic Coastal Plain Nonriverine Swamp and Wet Hardwood Forest - Taxodium/Nyssa Modifier

Wetlands	Atlantic Coastal Plain Nonriverine Swamp and Wet Hardwood Forest - Oak Dominated Modifier
Wetlands	Atlantic Coastal Plain Northern Basin Peat Swamp
Wetlands	Atlantic Coastal Plain Northern Basin Swamp and Wet Hardwood Forest
Wetlands	Atlantic Coastal Plain Northern Pondshore
Wetlands	Atlantic Coastal Plain Northern Wet Longleaf Pine Savanna and Flatwoods
Wetlands	Atlantic Coastal Plain Peatland Pocosin
Wetlands	Atlantic Coastal Plain Small Blackwater River Floodplain Forest
Wetlands	Atlantic Coastal Plain Small Brownwater River Floodplain Forest
Wetlands	Atlantic Coastal Plain Southern Wet Pine Savanna and Flatwoods
Wetlands	Atlantic Coastal Plain Streamhead Seepage Swamp, Pocosin, and Baygall
Wetlands	Central Appalachian Floodplain - Forest Modifier
Wetlands	Central Appalachian Floodplain - Herbaceous Modifier
Wetlands	Central Appalachian Riparian - Forest Modifier
Wetlands	Central Appalachian Riparian - Herbaceous Modifier
Wetlands	Central Florida Herbaceous Pondshore
Wetlands	Central Florida Herbaceous Seep
Wetlands	Central Florida Pine Flatwoods
Wetlands	Central Interior Highlands and Appalachian Sinkhole and Depression Pond
Wetlands	East Gulf Coastal Plain Interior Shrub Bog
Wetlands	East Gulf Coastal Plain Jackson Plain Dry Flatwoods - Scrub/Shrub Understory Modifier
Wetlands	East Gulf Coastal Plain Large River Floodplain Forest - Forest Modifier
Wetlands	East Gulf Coastal Plain Large River Floodplain Forest - Herbaceous Modifier
Wetlands	East Gulf Coastal Plain Near-Coast Pine Flatwoods - Offsite Hardwood Modifier
Wetlands	East Gulf Coastal Plain Near-Coast Pine Flatwoods - Open Understory Modifier
Wetlands	East Gulf Coastal Plain Near-Coast Pine Flatwoods - Scrub/Shrub Understory Modifier
Wetlands	East Gulf Coastal Plain Northern Depression Pondshore
Wetlands	East Gulf Coastal Plain Northern Seepage Swamp
Wetlands	East Gulf Coastal Plain Small Stream and River Floodplain Forest
Wetlands	East Gulf Coastal Plain Southern Depression Pondshore
Wetlands	East Gulf Coastal Plain Southern Loblolly-Hardwood Flatwoods
Wetlands	East Gulf Coastal Plain Treeless Savanna and Wet Prairie
Wetlands	Floridian Highlands Freshwater Marsh
Wetlands	Lower Mississippi River Bottomland and Floodplain Forest
Wetlands	Lower Mississippi River Bottomland Depressions - Forest Modifier
Wetlands	Lower Mississippi River Bottomland Depressions - Herbaceous Modifier
Wetlands	Mississippi River Low Floodplain (Bottomland) Forest
Wetlands	Mississippi River Riparian Forest
Wetlands	North-Central Appalachian Acidic Swamp
Wetlands	North-Central Appalachian Seepage Fen
Wetlands	North-Central Interior and Appalachian Rich Swamp
Wetlands	South Florida Hardwood Hammock
Wetlands	South-Central Interior Large Floodplain - Forest Modifier
Wetlands	South-Central Interior Large Floodplain - Herbaceous Modifier
Wetlands	South-Central Interior Small Stream and Riparian
Wetlands	South-Central Interior/Upper Coastal Plain Wet Flatwoods
Wetlands	Southern and Central Appalachian Bog and Fen
Wetlands	Southern Appalachian Seepage Wetland
Wetlands	Southern Coastal Plain Blackwater River Floodplain Forest
Wetlands	Southern Coastal Plain Herbaceous Seepage Bog
Wetlands	Southern Coastal Plain Hydric Hammock
Wetlands	Southern Coastal Plain Nonriverine Basin Swamp
Wetlands	Southern Coastal Plain Nonriverine Cypress Dome
Wetlands	Southern Coastal Plain Seepage Swamp and Baygall
Wetlands	Southern Coastal Plain Spring-run Stream Aquatic Vegetation
Wetlands	Southern Piedmont Large Floodplain Forest - Forest Modifier
Wetlands	Southern Piedmont Large Floodplain Forest - Herbaceous Modifier

Wetlands	Southern Piedmont Seepage Wetland
Wetlands	Southern Piedmont Small Floodplain and Riparian Forest
Wetlands	Southern Piedmont/Ridge and Valley Upland Depression Swamp
Wetlands	Western Highland Rim Seepage Fen

- CITATIONS:** Churchfield, S. 1992. The Natural History of Shrews. Cornell University Press, Ithaca, New York. 192 pp.
- French, T.W. 1980. Natural history of the southeastern shrew, SOREX LONGIROSTRIS (Bachman). Am. Midl. Nat. 104:13-31.
- French, T.W. 1980. Sorex longirostris. Am. Soc. Mamm., Mammalian Species No. 143. pp. 1-3.
- George, S. B. 1988. Systematics, historical biogeography, and evolution of the genus SOREX. J. Mammalogy 69:443-461.
- Hall, E. R. 1981. The Mammals of North America. Second edition. 2 Volumes. John Wiley and Sons, New York, New York. 1181 p.
- Hamilton, William J., Jr., and John O. Whitaker, Jr. 1979. Mammals of the eastern United States. Cornell Univ. Press, Ithaca, New York. 346 pp.
- Jackson, H. H. T. 1928. A taxonomic review of the American long-tailed shrews (genera SOREX and MICROSOREX). North American Fauna 51:1-238.
- Jones, C. A., et al. 1991. Geographic variation and taxonomy of the southeastern shrew (SOREX LONGIROSTRIS). J. Mammalogy 72:263-272.
- Jones, J. K., Jr., et al. 1992. Revised checklist of North American mammals north of Mexico, 1991. Occas. Pap. Mus., Texas Tech Univ. (146):1-23.
- Junge, J. A., and R. S. Hoffmann. 1981. An annotated key to the long-tailed shrews (genus SOREX) of the United States and Canada, with notes on the Middle American SOREX. Occas. Pap. Univ. Kansas Mus. Nat. Hist. 94:1-48.
- Layne, J. N., editor. 1978. Rare and endangered biota of Florida. Vol. 1. Mammals. State of Florida Game and Freshwater Fish Commission. xx + 52 pp.
- Layne, J.N.; Stallcup, J.A.; Woolfenden, G.E.; McCauley, M.N.; Worley, D.J. 1977. Fish and Wildlife Inventory of the Seven-County Region Included in the Central Florida Phosphate Industry Area-Wide Environmental Impact Study. Volumes I and II. Also avai
- Lee, D. S., L. B. Funderburg Jr., and M. K. Clark. 1982. A distributional survey of North Carolina mammals. Occasional Papers of the North Carolina Biological Survey, No. 1982-10. North Carolina State. Mus. Nat. Hist., Raleigh, North Carolina. 72 pp.
- Lowery, G. H., Jr. 1974. The mammals of Louisiana and its adjacent waters. Louisiana State University Press, Baton Rouge. 565 pp.
- Pagels, J. F., C. S. Jones, and C. O. Handley, Jr. 1982. Northern limits of the southeastern shrew, SOREX LONGIROSTRIS Bachman (Insectivora: Soricidae) on the Atlantic coast of the United States. Brimleyana 8:51-59.
- Pagels, John F. 1989. Distribution of the southeastern shrew, SOREX LONGIROSTRIS Bachman, in Western Virginia. Brimleyana. No. 15:123-131.
- Rose, R.K. 1980. The southeastern shrew, Sorex longirostris, in southern Indiana. Jour. Mamm. 61(1):162-164.
- Schwartz, Charles W., and Elizabeth R. Schwartz. 1981. The wild mammals of Missouri. University of Missouri Press, Columbia. 356 pp.
- Taylor, C. L., and R. F. Wilkinson, Jr. 1988. First record of SOREX LONGIROSTRIS (Soricidae) in Oklahoma. Southwest. Nat. 33:248.
- Webster, W. D., J. F. Parnell and W. C. Biggs Jr. 1985. Mammals of the Carolinas, Virginia, and Maryland. The University of North Carolina Press, Chapel Hill, NC.
- Whitaker, J.O. Jr. and W.J. Hamilton, Jr. 1998. Mammals of the eastern United States. Cornell Univ. Press, Ithaca, New York. 583 pp.
- Wilson, D. E., and D. M. Reeder (editors). 1993. Mammal Species of the World: a Taxonomic and Geographic Reference. Second Edition. Smithsonian Institution Press, Washington, DC. xviii + 1206 pp.

For more information:: SE-GAP Analysis Project / BaSIC
 127 David Clark Labs
 Dept. of Biology, NCSU
 Raleigh, NC 27695-7617
 (919) 513-2853
www.basic.ncsu.edu/segap

Compiled: 15 September 2011

This data was compiled and/or developed by the Southeast GAP Analysis Project at The Biodiversity and Spatial Information Center, North Carolina State University.