



SOUTHEAST GAP ANALYSIS PROJECT



Species Modeling Report

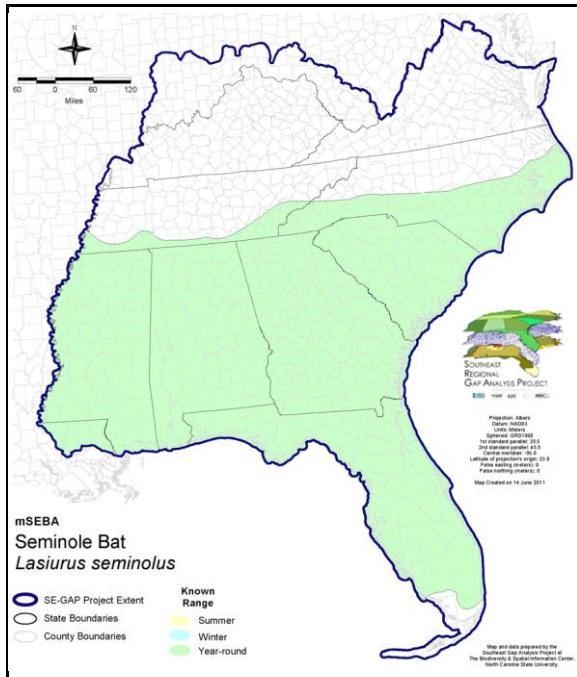
Seminole Bat

Lasiurus seminolus

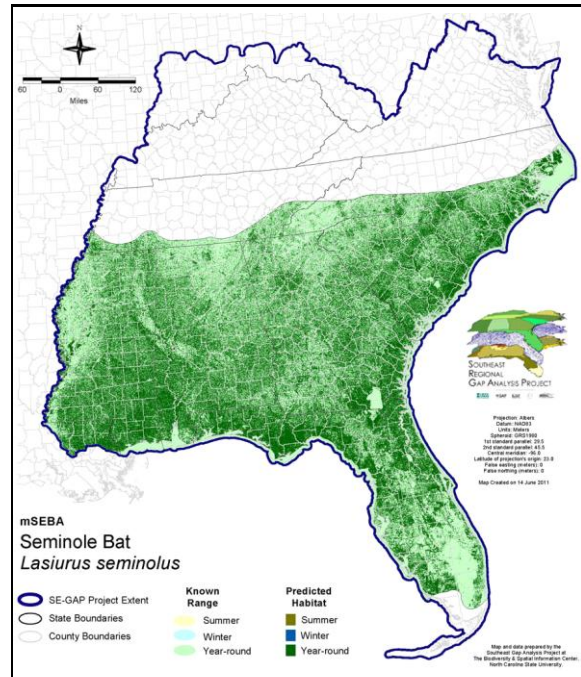
Taxa: Mammalian
 Order: Chiroptera
 Family: Vespertilionidae

SE-GAP Spp Code: **mSEBA**
 ITIS Species Code: 180020
 NatureServe Element Code: AMACC05020

KNOWN RANGE:



PREDICTED HABITAT:



Range Map Link: http://www.basic.ncsu.edu/segap/datazip/maps/SE_Range_mSEBA.pdf

Predicted Habitat Map Link: http://www.basic.ncsu.edu/segap/datazip/maps/SE_Dist_mSEBA.pdf

GAP Online Tool Link: <http://www.gapservice.ncsu.edu/segap/segap/index2.php?species=mSEBA>

Data Download: http://www.basic.ncsu.edu/segap/datazip/region/vert/mSEBA_se00.zip

PROTECTION STATUS:

Reported on March 14, 2011

Federal Status: ---

State Status: KY (N), MS (Non-game species in need of management), NC (W2), NC (W2), NY (U), OK (Category II)

NS Global Rank: G5

NS State Rank: AL (S4S5), AR (S3), FL (SNR), GA (S5), KY (SNA), LA (S4), MO (SNA), MS (SNR), NC (S3S4B), NC (S3S4B), NY (SNA), OK (S1), PA (SNA), SC (SNR), TX (S3), VA (SNA)

SUMMARY OF PREDICTED HABITAT BY MANAGMENT AND GAP PROTECTION STATUS:

	US FWS		US Forest Service		Tenn. Valley Author.		US DOD/ACOE	
	ha	%	ha	%	ha	%	ha	%
Status 1	68,440.8	< 1	8,842.1	< 1	0.0	0	0.0	0
Status 2	205,139.0	< 1	85,038.8	< 1	0.0	0	740.7	< 1
Status 3	539.9	< 1	1,266,364.3	3	13,397.4	< 1	561,552.7	1
Status 4	34.7	< 1	< 0.1	< 1	0.0	0	0.0	0
Total	274,154.3	< 1	1,360,245.2	4	13,397.4	< 1	562,293.4	1
	US Dept. of Energy		US Nat. Park Service		NOAA		Other Federal Lands	
	ha	%	ha	%	ha	%	ha	%
Status 1	0.0	0	31,907.8	< 1	152.6	< 1	16,953.3	< 1
Status 2	0.0	0	14,236.8	< 1	19,070.4	< 1	84.9	< 1
Status 3	71,019.7	< 1	120,475.1	< 1	0.0	0	5,509.4	< 1
Status 4	0.0	0	1.0	3	0.0	0	0.0	0
Total	71,019.7	< 1	166,621.2	< 1	19,222.9	< 1	22,547.6	< 1
	Native Am. Reserv.		State Park/Hist. Park		State WMA/Gameland		State Forest	
	ha	%	ha	%	ha	%	ha	%
Status 1	0.0	0	604.4	< 1	2.3	< 1	0.0	0
Status 2	0.0	0	4,167.4	< 1	460,104.8	1	0.0	0
Status 3	9,122.2	< 1	539,030.3	1	136,961.8	< 1	378,005.1	< 1
Status 4	0.0	0	< 0.1	< 1	87,429.6	< 1	43.1	< 1
Total	9,122.2	< 1	543,802.1	1	684,498.5	2	378,048.2	< 1
	State Coastal Reserve		ST Nat.Area/Preserve		Other State Lands		Private Cons. Easemt.	
	ha	%	ha	%	ha	%	ha	%
Status 1	0.0	0	4,177.1	< 1	0.0	0	0.0	0
Status 2	15,395.8	< 1	41,315.1	< 1	0.0	0	2,542.6	< 1
Status 3	0.0	0	21,955.9	< 1	28,680.8	< 1	120,341.8	< 1
Status 4	0.0	0	0.0	0	2,376.8	< 1	0.0	0
Total	15,395.8	< 1	67,448.1	< 1	31,057.7	< 1	122,884.4	< 1
	Private Land - No Res.		Water		Overall Total			
	ha	%	ha	%	ha	%		
Status 1	0.0	0	0.0	0	131,080.3	< 1		
Status 2	< 0.1	< 1	0.0	4	847,836.4	2		
Status 3	1,054.8	< 1	1.1	< 1	3,274,012.3	12		
Status 4	32,923,214.9	85	39,621.1	< 1	33,140,116.8	86		
Total	32,924,269.8	85	39,622.3	< 1	37,393,045.7	100		

GAP Status 1: An area having permanent protection from conversion of natural land cover and a mandated management plan in operation to maintain a natural state within which disturbance events (of natural type, frequency, and intensity) are allowed to proceed without interference or are mimicked through management.

GAP Status 2: An area having permanent protection from conversion of natural land cover and a mandated management plan in operation to maintain a primarily natural state, but which may receive use or management practices that degrade the quality of existing natural communities.

GAP Status 3: An area having permanent protection from conversion of natural land cover for the majority of the area, but subject to extractive uses of either a broad, low-intensity type or localized intense type. It also confers protection to federally listed endangered and threatened species throughout the area.

GAP Status 4: Lack of irrevocable easement or mandate to prevent conversion of natural habitat types to anthropogenic habitat types. Allows for intensive use throughout the tract. Also includes those tracts for which the existence of such restrictions or sufficient information to establish a higher status is unknown.

PREDICTED HABITAT MODEL(S):

Year-round Model:

Habitat Description: *Lasiurus seminolus* is a forest dwelling bat, roosting among the foliage of trees and shrubs (Whitaker and Hamilton 1998). Many roosts have been found at the edge or near clearings, or bordering lakes and streams, where Spanish moss or dense clumps of foliage are commonly used for concealment (Webster et al. 1985, Brown 1997). This species prefers cypress forests and other hydric woodlands (Brown 1997) with roosts typically in pines, primarily loblolly (Menzel et al. 2003). It occurs in wooded habitats including Okeefenokee, uplands, prairies, shrub swamps, blackgum forest, bay forest, cypress, and mixed cypress. In Florida habitat includes pine flatwoods, scrubby flatwoods, hammocks, lowland forests, river swamps, and longleaf-turkey oak. Forage at treetop level over watercourses, barren, clearings, prairies, and hammocks (Wilkins 1987). Seminole bats identified as utilizing pine plantations in MS (Miller 2003) Amy Silvano 20jun05

Ecosystem classifiers: Mixed & Pine Xeric, Evergreen, Mixed & Maritime Forests, Glades & barrens, Antro, Tidal wooded swamps, Flatwoods, Swamps, scrub/shrub, Depressional (Treed & shrub only), Floodplain/riparian (No herb mods), prairie. Amy Silvano 20jun05

Selected Map Units:

Functional Group	Map Unit Name
Anthropogenic	Developed Open Space
Anthropogenic	Low Intensity Developed
Anthropogenic	Successional Shrub/Scrub (Clear Cut)
Anthropogenic	Successional Shrub/Scrub (Other)
Anthropogenic	Successional Shrub/Scrub (Utility Swath)
Brackish Tidal Marsh & Wetland	Atlantic Coastal Plain Northern Tidal Wooded Swamp
Brackish Tidal Marsh & Wetland	Atlantic Coastal Plain Southern Tidal Wooded Swamp
Brackish Tidal Marsh & Wetland	East Gulf Coastal Plain Tidal Wooded Swamp
Brackish Tidal Marsh & Wetland	South Florida Mangrove Swamp
Forest/Woodland	Alabama Ketona Glade and Woodland
Forest/Woodland	Allegheny-Cumberland Dry Oak Forest and Woodland - Pine Modifier
Forest/Woodland	Appalachian Shale Barrens
Forest/Woodland	Atlantic Coastal Plain Central Maritime Forest
Forest/Woodland	Atlantic Coastal Plain Fall-Line Sandhills Longleaf Pine Woodland - Loblolly Modifier
Forest/Woodland	Atlantic Coastal Plain Fall-line Sandhills Longleaf Pine Woodland - Open Understory Modifier
Forest/Woodland	Atlantic Coastal Plain Fall-line Sandhills Longleaf Pine Woodland - Scrub/Shrub Understory Modifier
Forest/Woodland	Atlantic Coastal Plain Northern Maritime Forest
Forest/Woodland	Atlantic Coastal Plain Northern Mixed Oak-Heath Forest
Forest/Woodland	Atlantic Coastal Plain Southern Maritime Forest
Forest/Woodland	Atlantic Coastal Plain Upland Longleaf Pine Woodland
Forest/Woodland	Central Appalachian Alkaline Glade and Woodland
Forest/Woodland	Central Appalachian Oak and Pine Forest
Forest/Woodland	Central Appalachian Pine-Oak Rocky Woodland
Forest/Woodland	Central Interior Highlands Calcareous Glade and Barrens
Forest/Woodland	Central Interior Highlands Dry Acidic Glade and Barrens
Forest/Woodland	Cumberland Sandstone Glade and Barrens
Forest/Woodland	East Gulf Coastal Plain Black Belt Calcareous Prairie and Woodland - Woodland Modifier
Forest/Woodland	East Gulf Coastal Plain Interior Shortleaf Pine-Oak Forest - Mixed Modifier
Forest/Woodland	East Gulf Coastal Plain Interior Shortleaf Pine-Oak Forest - Pine Modifier
Forest/Woodland	East Gulf Coastal Plain Interior Upland Longleaf Pine Woodland - Loblolly Modifier
Forest/Woodland	East Gulf Coastal Plain Interior Upland Longleaf Pine Woodland - Open Understory Modifier
Forest/Woodland	East Gulf Coastal Plain Interior Upland Longleaf Pine Woodland - Scrub/Shrub Modifier
Forest/Woodland	East Gulf Coastal Plain Maritime Forest
Forest/Woodland	East Gulf Coastal Plain Northern Loess Plain Oak-Hickory Upland - Juniper Modifier
Forest/Woodland	Florida Longleaf Pine Sandhill - Open Understory Modifier

Forest/Woodland	Florida Longleaf Pine Sandhill - Scrub/Shrub Understory Modifier
Forest/Woodland	Florida Peninsula Inland Scrub
Forest/Woodland	Mississippi Delta Maritime Forest
Forest/Woodland	Northeastern Interior Dry Oak Forest - Mixed Modifier
Forest/Woodland	Northeastern Interior Dry Oak Forest - Virginia/Pitch Pine Modifier
Forest/Woodland	Ridge and Valley Calcareous Valley Bottom Glade and Woodland
Forest/Woodland	South Florida Pine Rockland
Forest/Woodland	Southeast Florida Coastal Strand and Maritime Hammock
Forest/Woodland	Southeastern Interior Longleaf Pine Woodland
Forest/Woodland	Southern and Central Appalachian Mafic Glade and Barrens
Forest/Woodland	Southern Appalachian Low Mountain Pine Forest
Forest/Woodland	Southern Coastal Plain Oak Dome and Hammock
Forest/Woodland	Southern Piedmont Dry Oak-(Pine) Forest - Loblolly Pine Modifier
Forest/Woodland	Southern Piedmont Dry Oak-(Pine) Forest - Mixed Modifier
Forest/Woodland	Southern Piedmont Dry Oak-Heath Forest - Mixed Modifier
Forest/Woodland	Southern Piedmont Dry Oak-Heath Forest - Virginia/Pitch Pine Modifier
Forest/Woodland	Southern Piedmont Glade and Barrens
Forest/Woodland	Southern Ridge and Valley Dry Calcareous Forest - Pine Modifier
Forest/Woodland	Southwest Florida Coastal Strand and Maritime Hammock
Prairie	East Gulf Coastal Plain Black Belt Calcareous Prairie and Woodland
Prairie	East Gulf Coastal Plain Black Belt Calcareous Prairie and Woodland - Herbaceous Modifier
Prairie	East Gulf Coastal Plain Jackson Plain Prairie and Barrens
Prairie	East Gulf Coastal Plain Jackson Prairie and Woodland
Prairie	Eastern Highland Rim Prairie and Barrens
Prairie	Eastern Highland Rim Prairie and Barrens - Dry Modifier
Prairie	Florida Dry Prairie
Prairie	Panhandle Florida Limestone Glade
Prairie	Southern Ridge and Valley Patch Prairie
Prairie	Western Highland Rim Prairie and Barrens
Wetlands	Atlantic Coastal Plain Blackwater Stream Floodplain Forest - Forest Modifier
Wetlands	Atlantic Coastal Plain Brownwater Stream Floodplain Forest
Wetlands	Atlantic Coastal Plain Clay-Based Carolina Bay Forested Wetland
Wetlands	Atlantic Coastal Plain Nonriverine Swamp and Wet Hardwood Forest - Taxodium/Nyssa Modifier
Wetlands	Atlantic Coastal Plain Nonriverine Swamp and Wet Hardwood Forest - Oak Dominated Modifier
Wetlands	Atlantic Coastal Plain Northern Basin Peat Swamp
Wetlands	Atlantic Coastal Plain Northern Basin Swamp and Wet Hardwood Forest
Wetlands	Atlantic Coastal Plain Northern Wet Longleaf Pine Savanna and Flatwoods
Wetlands	Atlantic Coastal Plain Peatland Pocosin
Wetlands	Atlantic Coastal Plain Small Blackwater River Floodplain Forest
Wetlands	Atlantic Coastal Plain Small Brownwater River Floodplain Forest
Wetlands	Atlantic Coastal Plain Southern Wet Pine Savanna and Flatwoods
Wetlands	Atlantic Coastal Plain Streamhead Seepage Swamp, Pocosin, and Baygall
Wetlands	Central Appalachian Floodplain - Forest Modifier
Wetlands	Central Appalachian Riparian - Forest Modifier
Wetlands	Central Florida Pine Flatwoods
Wetlands	Central Interior Highlands and Appalachian Sinkhole and Depression Pond
Wetlands	Cumberland Riverscour
Wetlands	East Gulf Coastal Plain Interior Shrub Bog
Wetlands	East Gulf Coastal Plain Jackson Plain Dry Flatwoods - Open Understory Modifier
Wetlands	East Gulf Coastal Plain Jackson Plain Dry Flatwoods - Scrub/Shrub Understory Modifier
Wetlands	East Gulf Coastal Plain Large River Floodplain Forest - Forest Modifier
Wetlands	East Gulf Coastal Plain Near-Coast Pine Flatwoods - Offsite Hardwood Modifier
Wetlands	East Gulf Coastal Plain Near-Coast Pine Flatwoods - Open Understory Modifier
Wetlands	East Gulf Coastal Plain Near-Coast Pine Flatwoods - Scrub/Shrub Understory Modifier
Wetlands	East Gulf Coastal Plain Northern Seepage Swamp
Wetlands	East Gulf Coastal Plain Small Stream and River Floodplain Forest

Wetlands	East Gulf Coastal Plain Southern Loblolly-Hardwood Flatwoods
Wetlands	East Gulf Coastal Plain Treeless Savanna and Wet Prairie
Wetlands	Lower Mississippi River Bottomland and Floodplain Forest
Wetlands	Lower Mississippi River Bottomland Depressions - Forest Modifier
Wetlands	Mississippi River Low Floodplain (Bottomland) Forest
Wetlands	Mississippi River Riparian Forest
Wetlands	South Florida Bayhead Swamp
Wetlands	South Florida Cypress Dome
Wetlands	South Florida Dwarf Cypress Savanna
Wetlands	South Florida Hardwood Hammock
Wetlands	South Florida Pine Flatwoods
Wetlands	South Florida Pond-Apple/Popash Slough
Wetlands	South Florida Wet Marl Prairie
Wetlands	South-Central Interior Large Floodplain - Forest Modifier
Wetlands	South-Central Interior Small Stream and Riparian
Wetlands	South-Central Interior/Upper Coastal Plain Wet Flatwoods
Wetlands	Southern and Central Appalachian Bog and Fen
Wetlands	Southern Coastal Plain Blackwater River Floodplain Forest
Wetlands	Southern Coastal Plain Hydric Hammock
Wetlands	Southern Coastal Plain Nonriverine Basin Swamp
Wetlands	Southern Coastal Plain Nonriverine Cypress Dome
Wetlands	Southern Coastal Plain Seepage Swamp and Baygall
Wetlands	Southern Piedmont Large Floodplain Forest - Forest Modifier
Wetlands	Southern Piedmont Seepage Wetland
Wetlands	Southern Piedmont Small Floodplain and Riparian Forest
Wetlands	Southern Piedmont/Ridge and Valley Upland Depression Swamp
Wetlands	Western Highland Rim Seepage Fen

Selected Secondary Map Units within 1000m of Primary Map Units:

Functional Group	Map Unit Name
Forest/Woodland	East Gulf Coastal Plain Northern Dry Upland Hardwood Forest - Offsite Pine Modifier
Anthropogenic	Evergreen Plantations

CITATIONS: Baker, R. J., et al. 1988. Genic studies of *Lasiurus* (Chiroptera:Vespertilionidae). *Occas. Pap. Mus. Texas Tech. Univ.* 117:1-15.

Barbour, R. W., and W. H. Davis. 1969. *Bats of America*. The University of Kentucky Press, Lexington, Kentucky.

Brown, L. N. 1997. *A guide to the mammals of the southeastern United States*. University of Tennessee Press, Knoxville. xiv + 236 pp.

Davis, W. B. 1974. *The mammals of Texas*. Texas Parks and Wildlife Dept., Bull. No. 41. 294 pp.

Hall, E. R. 1981. *The Mammals of North America*. Second edition. 2 Volumes. John Wiley and Sons, New York, New York. 1181 p.

Hamilton, William J., Jr., and John O. Whitaker, Jr. 1979. *Mammals of the eastern United States*. Cornell Univ. Press, Ithaca, New York. 346 pp.

Handley, C. O., Jr. 1991. Mammals. Pages 539-616 in K. Terwilliger, coordinator. *Virginia's endangered species:proceedings of a symposium*. McDonald and Woodward Publishing Company, Blacksburg, Virginia.

Jones, J. K., Jr., et al. 1992. Revised checklist of North American mammals north of Mexico, 1991. *Occas. Pap. Mus., Texas Tech Univ.* (146):1-23.

Lee, D. S., L. B. Funderburg Jr., and M. K. Clark. 1982. A distributional survey of North Carolina mammals. *Occasional Papers of the North Carolina Biological Survey*, No. 1982-10. North Carolina State. Mus. Nat. Hist., Raleigh, North Carolina. 72 pp.

Lowery, G. H., Jr. 1974. *The mammals of Louisiana and its adjacent waters*. Louisiana State University Press, Baton Rouge. 565 pp.

Menzel, M.A., Menzel, J.M., Kilgo, J.A., Ford, W.M., Carter, T.C., and Edwards, J.W. 2003. *Bats of the Savannah River Site and vicinity*. General Technical Report SRS-68. Asheville, NC: US Department of Agriculture, Forest Service, Southern Research Station

Miller, Darren A. 2003. Species diversity, reproduction, and sex ratios of bats in managed pine forest landscapes of Mississippi. *Southeastern Naturalist*. 2: 59-72

Morales, J. C., and J. W. Bickham. 1995. Molecular systematics of the genus *LASIURUS* (Chiroptera:Vespertilionidae) based on restriction-site maps of the mitochondrial ribosomal genes. *Journal of Mammalogy* 76:730-749.

Padgett, T. M., and R. K. Rose. 1991. Bats (Chiroptera:Vespertilionidae) of the Great Dismal Swamp of Virginia and North Carolina. *Brimleyana* 17:17-25.

Schmidly, D. J. 1991. The bats of Texas. Texas A & M Univ. Press, College Station. 188 pp.

Webster, W. D., J. F. Parnell and W. C. Biggs Jr. 1985. Mammals of the Carolinas, Virginia, and Maryland. The University of North Carolina Press, Chapel Hill, NC.

Whitaker, J.O. Jr. and W.J. Hamilton, Jr. 1998. Mammals of the eastern United States. Cornell Univ. Press, Ithaca, New York. 583 pp.

Wilkins, K. T. 1987. *Lasiurus seminolus*. *Mammalian Species* 280:1-5.

Wilson, D. E., and D. M. Reeder (editors). 1993. *Mammal Species of the World: a Taxonomic and Geographic Reference*. Second Edition. Smithsonian Institution Press, Washington, DC. xviii + 1206 pp.

For more information:: SE-GAP Analysis Project / BaSIC
127 David Clark Labs
Dept. of Biology, NCSU
Raleigh, NC 27695-7617
(919) 513-2853
www.basic.ncsu.edu/segap

Compiled: 15 September 2011

This data was compiled and/or developed
by the Southeast GAP Analysis Project at
The Biodiversity and Spatial Information
Center, North Carolina State University.