



# SOUTHEAST GAP ANALYSIS PROJECT



## Species Modeling Report

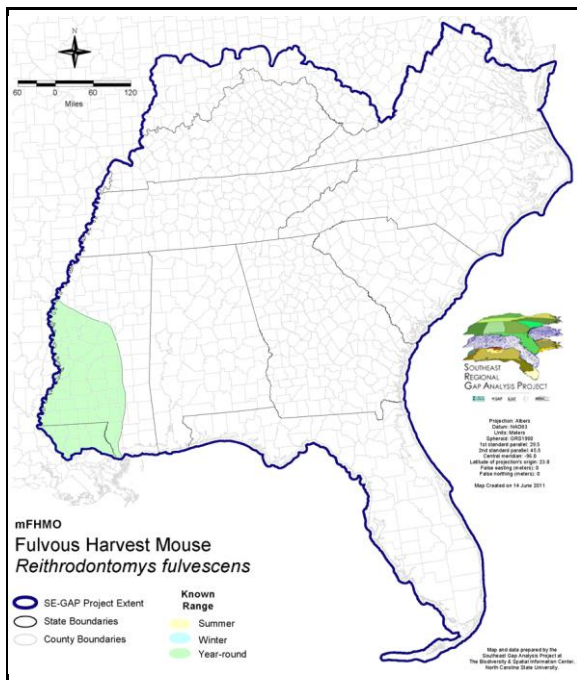
### Fulvous Harvest Mouse

*Reithrodontomys fulvescens*

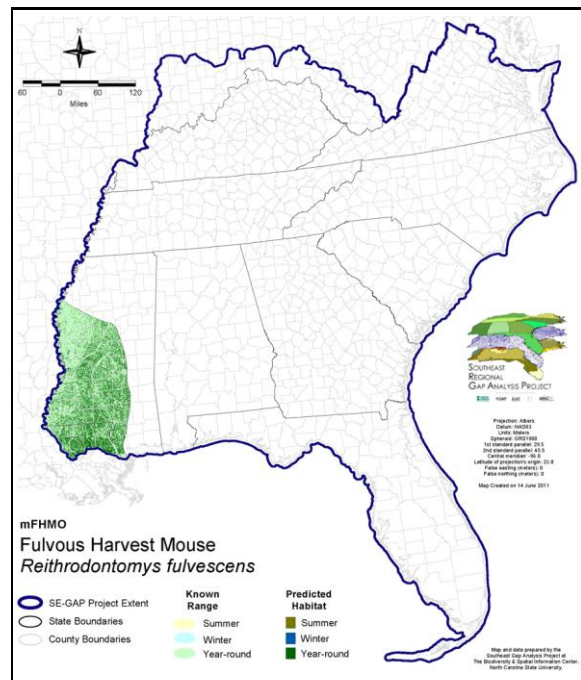
Taxa: Mammalian  
 Order: Rodentia  
 Family: Cricetidae

SE-GAP Spp Code: **mFHMO**  
 ITIS Species Code: 180341  
 NatureServe Element Code: AMAFF02050

#### KNOWN RANGE:



#### PREDICTED HABITAT:



Range Map Link: [http://www.basic.ncsu.edu/segap/datazip/maps/SE\\_Range\\_mFHMO.pdf](http://www.basic.ncsu.edu/segap/datazip/maps/SE_Range_mFHMO.pdf)

Predicted Habitat Map Link: [http://www.basic.ncsu.edu/segap/datazip/maps/SE\\_Dist\\_mFHMO.pdf](http://www.basic.ncsu.edu/segap/datazip/maps/SE_Dist_mFHMO.pdf)

GAP Online Tool Link: <http://www.gapservice.ncsu.edu/segap/segap/index2.php?species=mFHMO>

Data Download: [http://www.basic.ncsu.edu/segap/datazip/region/vert/mFHMO\\_se00.zip](http://www.basic.ncsu.edu/segap/datazip/region/vert/mFHMO_se00.zip)

#### PROTECTION STATUS:

Reported on March 14, 2011

Federal Status: ---

State Status: MS (Non-game species in need of management)

NS Global Rank: G5

NS State Rank: AR (S5), AZ (S4), KS (S2S3), LA (S4), MO (SNR), MS (SNR), NM (S1), OK (S4), TX (S5)

**SUMMARY OF PREDICTED HABITAT BY MANAGMENT AND GAP PROTECTION STATUS:**

	US FWS		US Forest Service		Tenn. Valley Author.		US DOD/ACOE	
	ha	%	ha	%	ha	%	ha	%
Status 1	369.2	< 1	1.2	< 1	0.0	0	0.0	0
Status 2	7,418.5	< 1	33.3	< 1	0.0	0	0.0	0
Status 3	0.0	0	13,299.7	< 1	0.0	0	0.0	0
Status 4	0.0	0	0.0	0	0.0	0	0.0	0
Total	7,787.7	< 1	13,334.1	< 1	0.0	0	0.0	0
	US Dept. of Energy		US Nat. Park Service		NOAA		Other Federal Lands	
	ha	%	ha	%	ha	%	ha	%
Status 1	0.0	0	0.0	0	0.0	0	0.0	0
Status 2	0.0	0	0.0	0	0.0	0	0.0	0
Status 3	0.0	0	3,994.7	< 1	0.0	0	3,203.8	< 1
Status 4	0.0	0	0.0	0	0.0	0	0.0	0
Total	0.0	0	3,994.7	< 1	0.0	0	3,203.8	< 1
	Native Am. Reserv.		State Park/Hist. Park		State WMA/Gameland		State Forest	
	ha	%	ha	%	ha	%	ha	%
Status 1	0.0	0	0.0	0	0.0	0	0.0	0
Status 2	0.0	0	0.0	0	1,645.7	< 1	0.0	0
Status 3	697.1	< 1	554.2	< 1	3,303.5	< 1	0.0	0
Status 4	0.0	0	0.0	0	1,127.8	< 1	0.0	0
Total	697.1	< 1	554.2	< 1	6,077.1	< 1	0.0	0
	State Coastal Reserve		ST Nat.Area/Preserve		Other State Lands		Private Cons. Easemt.	
	ha	%	ha	%	ha	%	ha	%
Status 1	0.0	0	0.0	0	0.0	0	0.0	0
Status 2	730.8	< 1	0.0	0	0.0	0	0.0	0
Status 3	0.0	0	0.0	0	0.0	0	2,543.3	< 1
Status 4	0.0	0	0.0	0	0.0	0	0.0	0
Total	730.8	< 1	0.0	0	0.0	0	2,543.3	< 1
	Private Land - No Res.		Water		Overall Total			
	ha	%	ha	%	ha	%		
Status 1	0.0	0	0.0	0	370.4	< 1		
Status 2	0.0	0	0.0	0	9,828.4	< 1		
Status 3	0.0	0	0.0	0	27,596.3	2		
Status 4	1,756,405.5	97	1,106.4	< 1	1,759,767.5	97		
Total	1,756,405.5	97	1,106.4	< 1	1,797,562.5	100		

GAP Status 1: An area having permanent protection from conversion of natural land cover and a mandated management plan in operation to maintain a natural state within which disturbance events (of natural type, frequency, and intensity) are allowed to proceed without interference or are mimicked through management.

GAP Status 2: An area having permanent protection from conversion of natural land cover and a mandated management plan in operation to maintain a primarily natural state, but which may receive use or management practices that degrade the quality of existing natural communities.

GAP Status 3: An area having permanent protection from conversion of natural land cover for the majority of the area, but subject to extractive uses of either a broad, low-intensity type or localized intense type. It also confers protection to federally listed endangered and threatened species throughout the area.

GAP Status 4: Lack of irrevocable easement or mandate to prevent conversion of natural habitat types to anthropogenic habitat types. Allows for intensive use throughout the tract. Also includes those tracts for which the existence of such restrictions or sufficient information to establish a higher status is unknown.

## PREDICTED HABITAT MODEL(S):

### Year-round Model:

Habitat Description: Fulvous harvest mouse occur primarily in grassy fields containing shrubs (Spencer and Cameron 1982). Additional habitat for this species includes fencrows, thickets, and pine-grass ecotones (Chaote et al. 1994, Wilson and Ruff 1999, Spencer and Cameron 1982). Amy Silvano 24jun05

Ecosystem Classifiers: Disturbed grasslands, Evergreen. Amy silvano 24jun05

Customized Model: Do not restrict anthropogenic classes to ecotone buffer (i.e. successional grassland, pasture/hay, and developed open space). Only include utility swaths when within/adjacent to selected forested classes. Amy Silvano 24jun05

Mask of Forest/Open Ecotone: Include within 30m of ecotone edge.

Mask of Woodlands and Shrublands: Include all woodland and shrubland interiors and 30m buffer from them.

### Selected Map Units:

Functional Group	Map Unit Name
Anthropogenic	Developed Open Space
Anthropogenic	Pasture/Hay
Anthropogenic	Successional Grassland/Herbaceous
Anthropogenic	Successional Grassland/Herbaceous (Other)
Anthropogenic	Successional Grassland/Herbaceous (Utility Swath)
Anthropogenic	Successional Shrub/Scrub (Clear Cut)
Anthropogenic	Successional Shrub/Scrub (Other)
Anthropogenic	Successional Shrub/Scrub (Utility Swath)
Forest/Woodland	East Gulf Coastal Plain Interior Shortleaf Pine-Oak Forest - Mixed Modifier
Forest/Woodland	East Gulf Coastal Plain Interior Shortleaf Pine-Oak Forest - Pine Modifier
Forest/Woodland	East Gulf Coastal Plain Interior Upland Longleaf Pine Woodland - Loblolly Modifier
Forest/Woodland	East Gulf Coastal Plain Interior Upland Longleaf Pine Woodland - Open Understory Modifier
Forest/Woodland	East Gulf Coastal Plain Interior Upland Longleaf Pine Woodland - Scrub/Shrub Modifier
Forest/Woodland	East Gulf Coastal Plain Northern Loess Plain Oak-Hickory Upland - Juniper Modifier
Prairie	East Gulf Coastal Plain Jackson Plain Prairie and Barrens
Prairie	East Gulf Coastal Plain Jackson Prairie and Woodland
Wetlands	East Gulf Coastal Plain Jackson Plain Dry Flatwoods - Open Understory Modifier
Wetlands	East Gulf Coastal Plain Near-Coast Pine Flatwoods - Open Understory Modifier
Wetlands	East Gulf Coastal Plain Southern Loblolly-Hardwood Flatwoods
Wetlands	East Gulf Coastal Plain Treeless Savanna and Wet Prairie

**CITATIONS:** Choate, J. R., J. K. Jones, Jr., and C. Jones. 1994. Handbook of mammals of the south-central states. Louisiana State University Press, Baton Rouge. 304 pp.

Spencer, S.R., and G.N. Cameron. 1982. *Reithrodontomys fulvescens*: Mammalian Species. 174 1-7.

Wilson, D.E. and S. Ruff. 1999. The Smithsonian book of North American mammals. Washington, DC, Smithsonian Inst. Press. 750 p.

For more information:: SE-GAP Analysis Project / BaSIC  
127 David Clark Labs  
Dept. of Biology, NCSU  
Raleigh, NC 27695-7617  
(919) 513-2853  
[www.basic.ncsu.edu/segap](http://www.basic.ncsu.edu/segap)

Compiled: 15 September 2011

This data was compiled and/or developed by the Southeast GAP Analysis Project at The Biodiversity and Spatial Information Center, North Carolina State University.