



SOUTHEAST GAP ANALYSIS PROJECT



Species Modeling Report

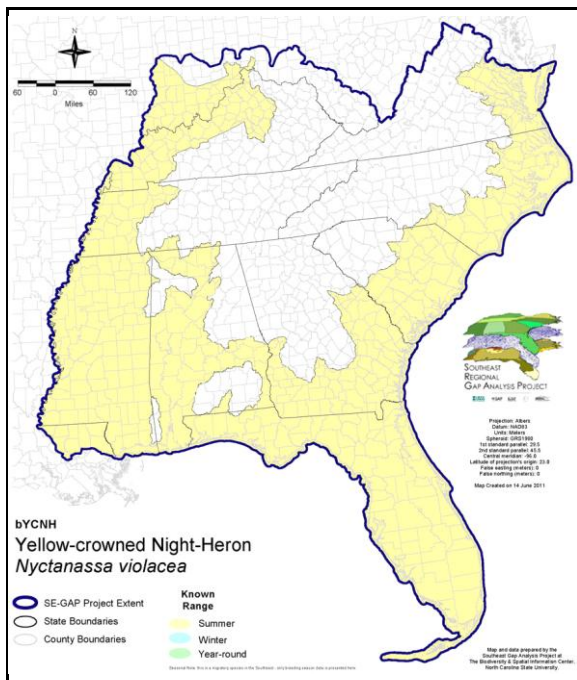
Yellow-crowned Night-Heron

Nyctanassa violacea

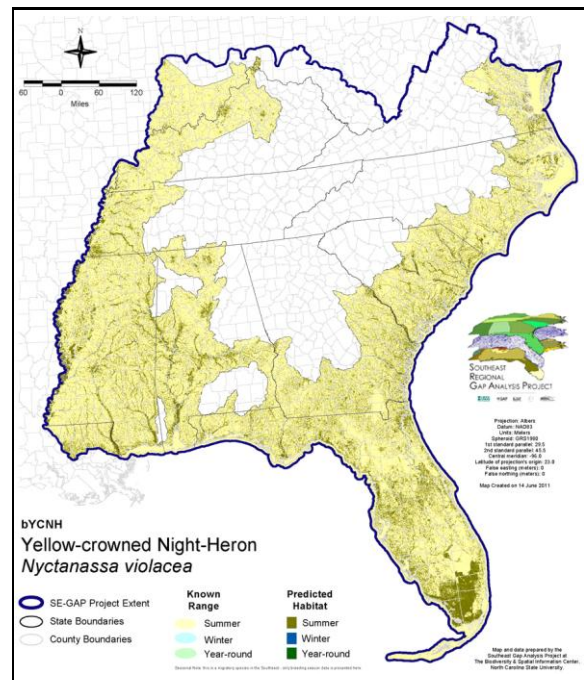
Taxa: Avian
Order: Ciconiiformes
Family: Ardeidae

SE-GAP Spp Code: **bYCNH**
ITIS Species Code: 174842
NatureServe Element Code: ABNGA13010

KNOWN RANGE:



PREDICTED HABITAT:



Range Map Link: http://www.basic.ncsu.edu/segap/datazip/maps/SE_Range_bYCNH.pdf

Predicted Habitat Map Link: http://www.basic.ncsu.edu/segap/datazip/maps/SE_Dist_bYCNH.pdf

GAP Online Tool Link: <http://www.gapservice.ncsu.edu/segap/segap/index2.php?species=bYCNH>

Data Download: http://www.basic.ncsu.edu/segap/datazip/region/vert/bYCNH_se00.zip

PROTECTION STATUS:

Reported on March 14, 2011

Federal Status: ---

State Status: AR (W), CT (SC), CT (SC), DE (E), IL (LE), IN (SE), KY (T), NC (W2,W3), NC (W2,W3), NJ (T/T), NY (PB), OH (T), PA (PE), RI (Concern), VA (SC), WI (THR), WI (THR), QC (Non suivie)

NS Global Rank: G5

NS State Rank: AL (S2N,S4B), AR (S3B), AZ (SNA), CA (SNA), CO (S1B), CO (S1B), CT (S1B), CT (S1B), DC (SHB), DE (S1B), FL (S3), GA (S3S4), IA (S3B,S3N), IL (S1), IN (S2B), KS (S2B,S3N), KY (S2B), LA (S2N,S5B), MA (S1B,S2N), MD (S2B), ME (SNA), MI (SNRN), MN (SNRB), MO (SNRB), MS (S3B,S1N), MT (SNA), NC (S3B), NC (S3B), ND (SNA), NE (SNRN), NH (SNA), NJ (S2B,S2N), NM (SNA), NY (S2), OH (S1), OK (S4B), PA (S1B), RI (S1B,S1N), SC (SNRB,SNRN), SD (SUB), SD (SUB), TN (S3), TX (S4B), VA (S2S3B,S3N), WA (SNA), WI (S1B), WI (S1B), WV (S1N), WY (SNA), AB (SNA), MB (SNA), NB (SNA), NF (SNA), NS (SNA), ON (SNA), PE (SNA), QC (SNA), SK (SNA)

SUMMARY OF PREDICTED HABITAT BY MANAGMENT AND GAP PROTECTION STATUS:

	US FWS		US Forest Service		Tenn. Valley Author.		US DOD/ACOE	
	ha	%	ha	%	ha	%	ha	%
Status 1	116,675.5	< 1	4,708.3	< 1	0.0	0	0.0	0
Status 2	138,479.9	1	22,202.3	< 1	0.0	0	552.9	< 1
Status 3	1,594.4	< 1	197,301.5	1	3,946.3	< 1	159,787.4	1
Status 4	33.8	< 1	< 0.1	< 1	0.0	0	178.4	< 1
Total	256,783.6	2	224,212.1	2	3,946.3	< 1	160,518.6	1
	US Dept. of Energy		US Nat. Park Service		NOAA		Other Federal Lands	
	ha	%	ha	%	ha	%	ha	%
Status 1	0.0	0	365,444.7	3	947.0	< 1	10,193.5	< 1
Status 2	0.0	0	30,790.4	< 1	40,586.1	< 1	45.4	< 1
Status 3	14,988.4	< 1	234,325.8	2	0.0	0	2,477.0	< 1
Status 4	0.0	0	1.0	0	0.0	0	0.0	0
Total	14,988.4	< 1	630,562.9	5	41,533.1	< 1	12,715.8	< 1
	Native Am. Reserv.		State Park/Hist. Park		State WMA/Gameland		State Forest	
	ha	%	ha	%	ha	%	ha	%
Status 1	0.0	0	168.2	< 1	0.0	0	0.0	0
Status 2	0.0	0	662.8	< 1	566,251.4	4	0.0	0
Status 3	2,346.5	< 1	330,195.2	2	75,984.2	< 1	92,012.7	< 1
Status 4	0.0	0	< 0.1	< 1	8,744.0	< 1	6.2	< 1
Total	2,346.5	< 1	331,026.3	2	650,979.5	5	92,018.9	< 1
	State Coastal Reserve		ST Nat.Area/Preserve		Other State Lands		Private Cons. Easemt.	
	ha	%	ha	%	ha	%	ha	%
Status 1	0.0	0	2,287.0	< 1	0.0	0	0.0	0
Status 2	31,657.9	< 1	49,707.7	< 1	0.0	0	1,118.9	< 1
Status 3	0.0	0	11,081.4	< 1	7,204.6	< 1	52,092.8	< 1
Status 4	0.0	0	0.0	0	687.3	< 1	0.0	0
Total	31,657.9	< 1	63,076.1	< 1	7,891.9	< 1	53,211.7	< 1
	Private Land - No Res.		Water		Overall Total			
	ha	%	ha	%	ha	%	ha	%
Status 1	0.0	< 1	0.0	0	500,424.3 4			
Status 2	0.8	< 1	0.0	6	882,056.5 7			
Status 3	254.9	< 1	< 0.1	< 1	1,185,593.2 10			
Status 4	10,702,311.2	79	63,419.7	< 1	10,784,092.8 80			
Total	10,702,567.1	79	63,419.9	< 1	13,352,166.8 100			

GAP Status 1: An area having permanent protection from conversion of natural land cover and a mandated management plan in operation to maintain a natural state within which disturbance events (of natural type, frequency, and intensity) are allowed to proceed without interference or are mimicked through management.

GAP Status 2: An area having permanent protection from conversion of natural land cover and a mandated management plan in operation to maintain a primarily natural state, but which may receive use or management practices that degrade the quality of existing natural communities.

GAP Status 3: An area having permanent protection from conversion of natural land cover for the majority of the area, but subject to extractive uses of either a broad, low-intensity type or localized intense type. It also confers protection to federally listed endangered and threatened species throughout the area.

GAP Status 4: Lack of irrevocable easement or mandate to prevent conversion of natural habitat types to anthropogenic habitat types. Allows for intensive use throughout the tract. Also includes those tracts for which the existence of such restrictions or sufficient information to establish a higher status is unknown.

PREDICTED HABITAT MODEL(S):

Summer Model:

Habitat Description: In coastal areas, nests on barrier, spoil, and bay islands; inland, in swamps, forested wetlands, and forested uplands near lakes, rivers, and creeks. Throughout southern part of range, nests in coastal and inland lowlands; also in wooded swamps, mangroves, and along edges of lagoons. Breeding is restricted to areas near water. Will nest in residential areas in wooded neighborhoods with open understory. Forages along water's edge in tidal marshes, exposed mudflats, beaches, rocky shorelines, tidal creeks, surf, swamps, and mangroves. Occasionally forages in upland ag areas, lawns, sewage plants, aquaculture ponds (Watts 1995). M. Rubino, 21dec04.

Hydrography Mask:

Utilizes flowing water features with buffers of 500m from and 30m into selected water features.

Utilizes open water features with buffers of 500m from and 30m into selected water features.

Utilizes wet vegetation features with buffer of unlimited into selected vegetation features.

Selected Map Units:

Functional Group	Map Unit Name
Anthropogenic	Developed Open Space
Anthropogenic	Low Intensity Developed
Beach	Unconsolidated Shore (Beach/Dune)
Brackish Tidal Marsh & Wetland	Atlantic Coastal Plain Central Salt and Brackish Tidal Marsh
Brackish Tidal Marsh & Wetland	Atlantic Coastal Plain Embayed Region Tidal Salt and Brackish Marsh
Brackish Tidal Marsh & Wetland	Atlantic Coastal Plain Indian River Lagoon Tidal Marsh
Brackish Tidal Marsh & Wetland	Atlantic Coastal Plain Northern Sea-Level Fen
Brackish Tidal Marsh & Wetland	Atlantic Coastal Plain Northern Tidal Salt Marsh
Brackish Tidal Marsh & Wetland	Atlantic Coastal Plain Northern Tidal Wooded Swamp
Brackish Tidal Marsh & Wetland	Atlantic Coastal Plain Southern Tidal Wooded Swamp
Brackish Tidal Marsh & Wetland	East Gulf Coastal Plain Tidal Wooded Swamp
Brackish Tidal Marsh & Wetland	Florida Big Bend Salt-Brackish Tidal Marsh
Brackish Tidal Marsh & Wetland	Mississippi Sound Salt and Brackish Tidal Marsh
Brackish Tidal Marsh & Wetland	South Florida Everglades Sawgrass Marsh
Brackish Tidal Marsh & Wetland	South Florida Mangrove Swamp
Brackish Tidal Marsh & Wetland	Southwest Florida Perched Barriers Salt Swamp and Lagoon - Mangrove Modifier
Brackish Tidal Marsh & Wetland	Southwest Florida Perched Barriers Salt Swamp and Lagoon - Marsh Modifier
Coastal Dune & Freshwater Wetland	Atlantic and Gulf Coastal Plain Interdunal Wetland
Freshwater Tidal Marsh & Wetland	Atlantic Coastal Plain Central Fresh-Oligohaline Tidal Marsh
Freshwater Tidal Marsh & Wetland	Atlantic Coastal Plain Embayed Region Tidal Freshwater Marsh
Freshwater Tidal Marsh & Wetland	Atlantic Coastal Plain Northern Fresh and Oligohaline Tidal Marsh
Freshwater Tidal Marsh & Wetland	Florida Big Bend Fresh-Oligohaline Tidal Marsh
Water	Open Water (Aquaculture)
Water	Open Water (Brackish/Salt)
Water	Open Water (Fresh)
Wetlands	Atlantic Coastal Plain Blackwater Stream Floodplain Forest - Forest Modifier
Wetlands	Atlantic Coastal Plain Brownwater Stream Floodplain Forest
Wetlands	Atlantic Coastal Plain Clay-Based Carolina Bay Forested Wetland
Wetlands	Atlantic Coastal Plain Depression Pondshore
Wetlands	Atlantic Coastal Plain Large Natural Lakeshore
Wetlands	Atlantic Coastal Plain Nonriverine Swamp and Wet Hardwood Forest - Taxodium/Nyssa Modifier
Wetlands	Atlantic Coastal Plain Nonriverine Swamp and Wet Hardwood Forest - Oak Dominated Modifier
Wetlands	Atlantic Coastal Plain Northern Basin Peat Swamp
Wetlands	Atlantic Coastal Plain Northern Basin Swamp and Wet Hardwood Forest
Wetlands	Atlantic Coastal Plain Northern Pondshore
Wetlands	Atlantic Coastal Plain Small Blackwater River Floodplain Forest
Wetlands	Atlantic Coastal Plain Small Brownwater River Floodplain Forest
Wetlands	Atlantic Coastal Plain Xeric River Dune
Wetlands	Central Florida Herbaceous Pondshore

Wetlands	East Gulf Coastal Plain Large River Floodplain Forest - Forest Modifier
Wetlands	East Gulf Coastal Plain Large River Floodplain Forest - Herbaceous Modifier
Wetlands	East Gulf Coastal Plain Northern Depression Pondshore
Wetlands	East Gulf Coastal Plain Small Stream and River Floodplain Forest
Wetlands	East Gulf Coastal Plain Southern Depression Pondshore
Wetlands	Lower Mississippi River Bottomland and Floodplain Forest
Wetlands	Lower Mississippi River Bottomland Depressions - Forest Modifier
Wetlands	Lower Mississippi River Bottomland Depressions - Herbaceous Modifier
Wetlands	Mississippi River Low Floodplain (Bottomland) Forest
Wetlands	Mississippi River Riparian Forest
Wetlands	South Florida Bayhead Swamp
Wetlands	South Florida Cypress Dome
Wetlands	South Florida Pond-Apple/Popash Slough
Wetlands	South-Central Interior Large Floodplain - Forest Modifier
Wetlands	South-Central Interior Large Floodplain - Herbaceous Modifier
Wetlands	South-Central Interior Small Stream and Riparian
Wetlands	Southern Coastal Plain Blackwater River Floodplain Forest
Wetlands	Southern Coastal Plain Hydric Hammock
Wetlands	Southern Coastal Plain Nonriverine Cypress Dome
Wetlands	Southern Coastal Plain Spring-run Stream Aquatic Vegetation
Wetlands	Southern Piedmont Large Floodplain Forest - Herbaceous Modifier
Wetlands	Unconsolidated Shore (Lake/River/Pond)

CITATIONS:

- American Ornithologists' Union (AOU), Committee on Classification and Nomenclature. 1983. Check-list of North American Birds. Sixth Edition. American Ornithologists' Union, Allen Press, Inc., Lawrence, Kansas.
- American Ornithologists' Union. 1989. Thirty-seventh supplement to the American Ornithologists' Union Checklist of North American birds. *Auk* 106:532-538.
- Byrd, M.A., and D.W. Johnston. 1991. Birds. Pages 477-537 in K. Terwilliger, coordinator. Virginia's endangered species: proceedings of a symposium. McDonald and Woodward Publ. Co., Blacksburg, Virginia.
- Fleury, B. E., and T. W. Sherry. 1995. Long-term population trends of colonial wading birds in the southern United States: the impact of crayfish aquaculture on Louisiana populations. *Auk* 112:613-632.
- Fussell, J.O. III. 1994. A birder's guide to coastal North Carolina. Chapel Hill and London: The University of North Carolina Press.
- Hamel, P. B. 1992. The land manager's guide to the birds of the south. The Nature Conservancy, Chapel Hill, North Carolina. 367 pp + several appendices.
- Harrison, H.H. 1975. A field guide to bird's nests in the U.S. east of the Mississippi River. Houghton Mifflin Company, Boston, Massachusetts. 257 p.
- Hilty, S.L., and W.L. Brown. 1986. A guide to the birds of Colombia. Princeton University Press, Princeton, New Jersey. 836 pp.
- Kaufman K. 1996. Lives of North American Birds. Boston, New York: Houghton Mifflin Company.
- National Geographic Society (NGS). 1983. Field guide to the birds of North America. National Geographic Society, Washington, D.C.
- Payne, R. B., and C. J. Risley. 1976. Systematics and evolutionary relationships among the herons (Ardeidae). *Univ. Michigan Mus. Zool., Misc. Publ. No. 150.* 115 pp.
- Potter, E. F., J. F. Parnell, and R. P. Teulings. 1980. Birds of the Carolinas. Univ. North Carolina Press, Chapel Hill. 408 pp.
- Riegner, M. F. 1982. The diet of yellow-crowned night-herons in the eastern and southern United States. *Colonial Waterbirds* 5:173-176.
- Root, T. 1988. Atlas of wintering North American birds: An analysis of Christmas Bird Count data. University of Chicago Press. 336 pp.
- Spendlow, J.A., and S.R. Patton. 1988. National atlas of coastal waterbird colonies in the contiguous United States: 1976-1982. U.S. Fish and Wildlife Service, Biological Report 88(5). x + 326 pp.
- Stiles, F.G., and A.F. Skutch. 1989. A guide to the birds of Costa Rica. Comstock Publ. Associates, Cornell University Press, Ithaca, New York. 511 pp.
- Terres, J.K. 1980. The Audubon Society encyclopedia of North American birds. Alfred A. Knopf, New York.
- Watts, B. D. 1989. Nest-site characteristics of yellow-crowned night-herons in Virginia. *Condor* 91:979-983.

For more information:: SE-GAP Analysis Project / BaSIC
127 David Clark Labs
Dept. of Biology, NCSU
Raleigh, NC 27695-7617
(919) 513-2853
www.basic.ncsu.edu/segap

Compiled: 15 September 2011

This data was compiled and/or developed
by the Southeast GAP Analysis Project at
The Biodiversity and Spatial Information
Center, North Carolina State University.