



SOUTHEAST GAP ANALYSIS PROJECT



Species Modeling Report

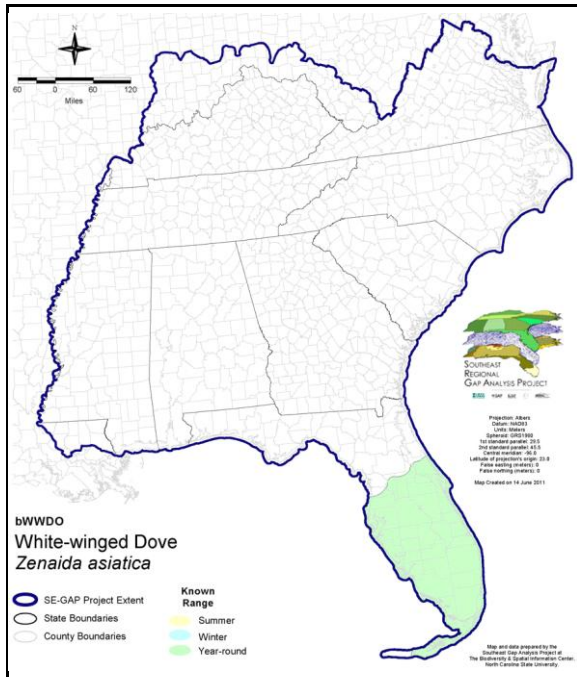
White-winged Dove

Zenaida asiatica

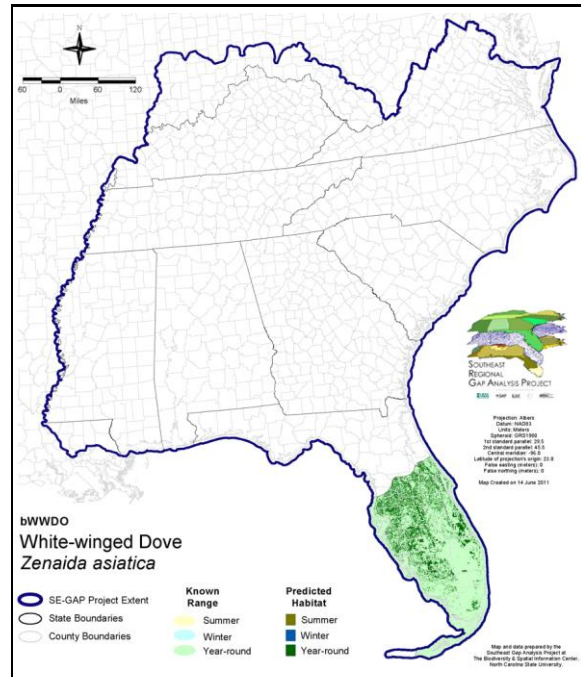
Taxa: Avian
 Order: Columbiformes
 Family: Columbidae

SE-GAP Spp Code: **bWWDO**
 ITIS Species Code: 177121
 NatureServe Element Code: ABNPB04010

KNOWN RANGE:



PREDICTED HABITAT:



Range Map Link: http://www.basic.ncsu.edu/segap/datazip/maps/SE_Range_bWWDO.pdf

Predicted Habitat Map Link: http://www.basic.ncsu.edu/segap/datazip/maps/SE_Dist_bWWDO.pdf

GAP Online Tool Link: <http://www.gapservice.ncsu.edu/segap/segap/index2.php?species=bWWDO>

Data Download: http://www.basic.ncsu.edu/segap/datazip/region/vert/bWWDO_se00.zip

PROTECTION STATUS:

Reported on March 14, 2011

Federal Status: ---

State Status: AL (GB), ID (P), NV (YES), NY (PB), UT (None), BC (8 (2005)), QC (Non suivie)

NS Global Rank: G5

NS State Rank: AK (SNA), AL (S3N), AZ (S5), CA (SNRB,SNRN), CO (SNA), DE (SNA), FL (SNA), FL (SNA), GA (SNA), ID (SNA), KS (SNA), LA (S2N), LA (S2N), MD (SNA), ME (SNA), MS (SNA), MT (SNA), NC (SNA), NC (SNA), NM (S5B,S5N), NV (S3B), NY (SNA), OR (SNA), TX (S5B), UT (S1B), VA (SNA), WA (SNA), WY (SNA), AB (SNA), BC (SNA), LB (SNA), NB (SNA), NS (SNA), ON (SNA), QC (SNA)

SUMMARY OF PREDICTED HABITAT BY MANAGMENT AND GAP PROTECTION STATUS:

	US FWS		US Forest Service		Tenn. Valley Author.		US DOD/ACOE	
	ha	%	ha	%	ha	%	ha	%
Status 1	8,330.2	< 1	0.0	0	0.0	0	0.0	0
Status 2	0.0	0	1,641.3	< 1	0.0	0	0.0	0
Status 3	0.0	0	555.1	< 1	0.0	0	10,137.6	< 1
Status 4	0.0	0	0.0	0	0.0	0	0.0	0
Total	8,330.2	< 1	2,196.5	< 1	0.0	0	10,137.6	< 1
	US Dept. of Energy		US Nat. Park Service		NOAA		Other Federal Lands	
	ha	%	ha	%	ha	%	ha	%
Status 1	0.0	0	12,867.9	< 1	0.0	0	6,093.3	< 1
Status 2	0.0	0	1,119.9	< 1	1,114.5	< 1	12.4	< 1
Status 3	0.0	0	28,235.3	1	0.0	0	0.0	0
Status 4	0.0	0	0.0	0	0.0	0	0.0	0
Total	0.0	0	42,223.1	2	1,114.5	< 1	6,105.7	< 1
	Native Am. Reserv.		State Park/Hist. Park		State WMA/Gameland		State Forest	
	ha	%	ha	%	ha	%	ha	%
Status 1	0.0	0	0.0	0	0.0	0	0.0	0
Status 2	0.0	0	0.0	0	33,880.7	2	0.0	0
Status 3	0.0	0	151,540.0	8	0.0	0	40,326.0	2
Status 4	0.0	0	0.0	0	0.0	0	0.0	0
Total	0.0	0	151,540.0	8	33,880.7	2	40,326.0	2
	State Coastal Reserve		ST Nat.Area/Preserve		Other State Lands		Private Cons. Easemt.	
	ha	%	ha	%	ha	%	ha	%
Status 1	0.0	0	0.0	0	0.0	0	0.0	0
Status 2	0.0	0	0.0	0	0.0	0	926.2	< 1
Status 3	0.0	0	8,034.5	< 1	1,093.8	< 1	24,360.2	1
Status 4	0.0	0	0.0	0	0.0	0	< 0.1	< 1
Total	0.0	0	8,034.5	< 1	1,093.8	< 1	25,286.5	1
	Private Land - No Res.		Water		Overall Total			
	ha	%	ha	%	ha	%		
Status 1	0.0	0	0.0	0	27,291.4	1		
Status 2	0.0	0	0.0	0	38,695.0	2		
Status 3	< 0.1	< 1	0.0	0	264,282.7	14		
Status 4	1,563,329.7	82	10,564.5	< 1	1,573,894.3	83		
Total	1,563,329.8	82	10,564.5	< 1	1,904,163.3	100		

GAP Status 1: An area having permanent protection from conversion of natural land cover and a mandated management plan in operation to maintain a natural state within which disturbance events (of natural type, frequency, and intensity) are allowed to proceed without interference or are mimicked through management.

GAP Status 2: An area having permanent protection from conversion of natural land cover and a mandated management plan in operation to maintain a primarily natural state, but which may receive use or management practices that degrade the quality of existing natural communities.

GAP Status 3: An area having permanent protection from conversion of natural land cover for the majority of the area, but subject to extractive uses of either a broad, low-intensity type or localized intense type. It also confers protection to federally listed endangered and threatened species throughout the area.

GAP Status 4: Lack of irrevocable easement or mandate to prevent conversion of natural habitat types to anthropogenic habitat types. Allows for intensive use throughout the tract. Also includes those tracts for which the existence of such restrictions or sufficient information to establish a higher status is unknown.

PREDICTED HABITAT MODEL(S):

Year-round Model:

Habitat Description: Within the southeastern United States the white-winged dove is only known to be an established breeder in the southern tip of Florida (Florida BBA Atlas Species account @ <http://wildflorida.org/bba/WWDO.htm>) and little is known about its breeding habitats within this range (Stevenson & Anderson 1994). Throughout other portions of its range this species prefers semi-open arid regions, scrubby thickets, and riparian woodlands (Schwertner et al. 2002), nesting in trees and shrubs as well as cactus and vines (NatureServe 2005). However, they prefer to nest within forest interiors rather than woodland edges (Schwertner et al. 2002). In the southern Florida peninsula this species is known to frequent parks, mangroves, citrus groves, residential areas, croplands, and to a lesser extent open pine-flatwoods (Stevenson & Anderson 1994, NatureServe 2005). Amy Silvano 26May05

*****Limited information regarding species habitat in Florida

Ecosystem classifiers: Anthro classes, mangrove forests, flatwoods, hardwood hammocks, and riparian.
Amy Silvano 26May05

Mask of Forest Interior Utilization: Include all forest interiors and 120m buffer from them.

Selected Map Units:

Functional Group	Map Unit Name
Anthropogenic	Deciduous Plantations
Anthropogenic	Developed Open Space
Anthropogenic	Low Intensity Developed
Anthropogenic	Medium Intensity Developed
Anthropogenic	Pasture/Hay
Anthropogenic	Row Crop
Brackish Tidal Marsh & Wetland	South Florida Mangrove Swamp
Brackish Tidal Marsh & Wetland	Southwest Florida Perched Barriers Salt Swamp and Lagoon - Mangrove Modifier
Forest/Woodland	South Florida Pine Rockland
Forest/Woodland	Southern Coastal Plain Oak Dome and Hammock
Wetlands	Central Florida Pine Flatwoods
Wetlands	South Florida Hardwood Hammock
Wetlands	South Florida Pine Flatwoods
Wetlands	Southern Coastal Plain Blackwater River Floodplain Forest
Wetlands	Southern Coastal Plain Hydric Hammock

CITATIONS: American Ornithologists' Union (AOU), Committee on Classification and Nomenclature. 1983. Check-list of North American Birds. Sixth Edition. American Ornithologists' Union, Allen Press, Inc., Lawrence, Kansas.

Bucher, E. H. 1990. The influence of changes in regional land-use patterns on ZENAIIDA dove populations. Pages 291-303 in J. Pinowski and J. D. Summers-Smith, editors. Granivorous birds in the agricultural landscape. Polish Scientific Publisher, Warszawa.

Cottam, C., and J. Trefethen, eds. Whitewings. Princeton. 348 pp.

Goodwin, D. 1983. Pigeons and doves of the world. Third edition. British Museum (Natural History), London, and Cornell Univ. Press, Ithaca. 363 pp. [496 pp.?).

Harrison, C. 1978. A field guide to the nests, eggs and nestlings of North American birds. Collins, Cleveland, Ohio.

Lack, D. 1976. Island biology illustrated by the land birds of Jamaica. Studies in Ecology, Vol. 3. Univ. California Press, Berkeley. 445 pp.

Oberholser, H.C. 1974. The bird life of Texas. 2 vols. Univ. of Texas Press, Austin.

Olin, G., S. M. Alcorn, and J. M. Alcorn. 1989. Dispersal of viable saguaro seeds by white-winged doves (ZENAIIDA ASIATICA). Southwest. Nat. 34:281-284.

Raffaele, H.A. 1983. A guide to the birds of Puerto Rico and the Virgin Islands. Fondo Educativo Interamericano, San Juan, Puerto Rico. 255 pp.

Rivera-Milan, F. F. 1992. Distribution and relative abundance patterns of columbids in Puerto Rico. Condor 94:224-238.

Schwertner, T.W., H.A. Mathewson, J.A. Roberson, M.Small, and G.L. Waggener. 2002. White-winged dove (*Zenaida asiatica*). In *The Birds of North America*, No. 710 (A. Poole and F. Gill, eds.). The Birds of North America, Inc., Philadelphia, PA.

Stevenson, H. M., and B. H. Anderson. 1994. *The birdlife of Florida*. University Press of Florida, Gainesville. 892 pp.

Stiles, F.G., and A.F. Skutch. 1989. *A guide to the birds of Costa Rica*. Comstock Publ. Associates, Cornell University Press, Ithaca, New York. 511 pp.

Swanson, D. A., and J. H. Rappole. 1992. Status of the white-winged dove in southern Texas. *Southwest. Nat.* 37:93-97.

Terres, J.K. 1980. *The Audubon Society encyclopedia of North American birds*. Alfred A. Knopf, New York.

For more information:: SE-GAP Analysis Project / BaSIC
127 David Clark Labs
Dept. of Biology, NCSU
Raleigh, NC 27695-7617
(919) 513-2853
www.basic.ncsu.edu/segap

Compiled: 15 September 2011

This data was compiled and/or developed
by the Southeast GAP Analysis Project at
The Biodiversity and Spatial Information
Center, North Carolina State University.