



SOUTHEAST GAP ANALYSIS PROJECT



Species Modeling Report

Whimbrel

Numenius phaeopus

Taxa: Avian

Order: Charadriiformes

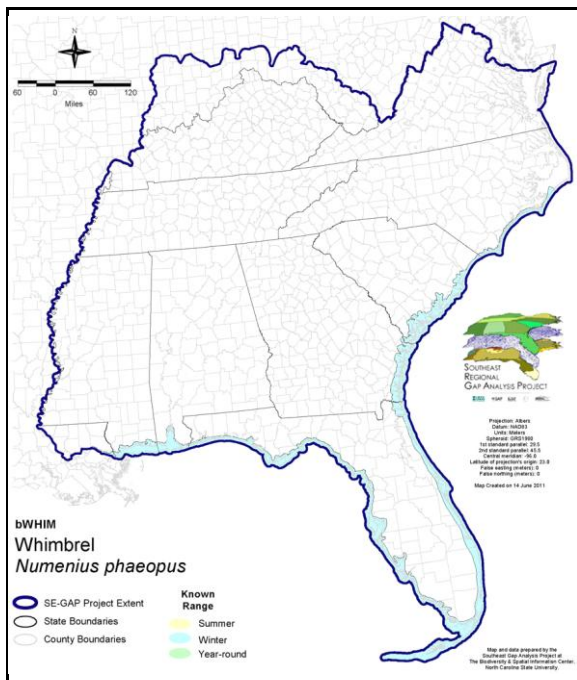
Family: Scolopacidae

SE-GAP Spp Code: **bWHIM**

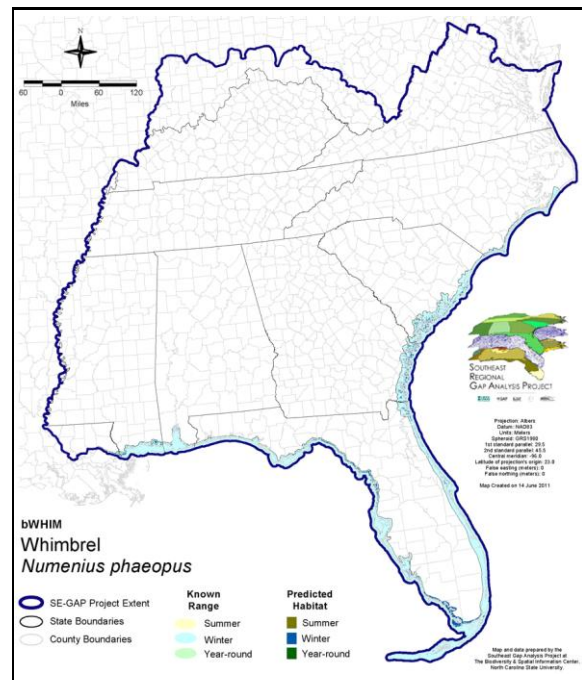
ITIS Species Code: 176599

NatureServe Element Code: ABNNF07020

KNOWN RANGE:



PREDICTED HABITAT:



Range Map Link: http://www.basic.ncsu.edu/segap/datazip/maps/SE_Range_bWHIM.pdf

Predicted Habitat Map Link: http://www.basic.ncsu.edu/segap/datazip/maps/SE_Dist_bWHIM.pdf

GAP Online Tool Link: <http://www.gapservice.ncsu.edu/segap/segap/index2.php?species=bWHIM>

Data Download: http://www.basic.ncsu.edu/segap/datazip/region/vert/bWHIM_se00.zip

PROTECTION STATUS:

Reported on March 14, 2011

Federal Status: ---

State Status: ID (P), KY (N), ME (SC), NJ (S), NV (YES), NY (PB), RI (Not Listed), UT (None), WI (SC/M), BC (4 (2005)), QC (Non suivie)

NS Global Rank: G5

NS State Rank: AK (S3S4B), AL (S3N), AR (SNA), AZ (S2M), CA (SNRN), CO (SNA), CT (SNA), DC (S1N), DE (SNA), FL (SNRN), GA (S4), IA (S1N), ID (SNA), IL (SNA), IN (SNA), KS (S2N), KY (SNA), LA (SNA), MA (S3N), MD (SNA), ME (S2N), MI (SNRN), MN (SNRM), MO (SNA), MS (SNA), MT (SNA), NC (SNA), ND (SNA), NE (SNRN), NH (SNA), NJ (S3N), NM (SNA), NV (SNA), NY (SNRN), OH (SNA), OK (S1N), OR (SNA), PA (SNA), RI (S3N), SC (SNRN), TN (SNA), TX (S4), UT (SNA), VA (SNA), VT (SNA), WA (S3N), WI (S2S3N), WY (S4N), AB (SNA), BC (S4S5M), LB (SNA), MB (S3S4B), NB (S4M), NF (SNA), NS (S3M), NT (SNRB), NU (SNRB), ON (S3B,S4N), PE (S3N), QC (S4M), SK (S4M), YT (S3B)

SUMMARY OF PREDICTED HABITAT BY MANAGMENT AND GAP PROTECTION STATUS:

	US FWS		US Forest Service		Tenn. Valley Author.		US DOD/ACOE	
	ha	%	ha	%	ha	%	ha	%
Status 1	41,543.9	6	0.0	0	0.0	0	0.0	0
Status 2	11,125.3	2	72.6	< 1	0.0	0	0.0	0
Status 3	0.0	0	478.4	< 1	0.0	0	8,367.5	1
Status 4	0.0	0	0.0	0	0.0	0	0.0	0
Total	52,669.2	8	551.1	< 1	0.0	0	8,367.5	1
	US Dept. of Energy		US Nat. Park Service		NOAA		Other Federal Lands	
	ha	%	ha	%	ha	%	ha	%
Status 1	0.0	0	112,624.5	17	728.5	< 1	3,687.6	< 1
Status 2	0.0	0	20,047.3	3	32,782.6	5	< 0.1	< 1
Status 3	0.0	0	1,454.2	< 1	0.0	0	0.0	0
Status 4	0.0	0	1.0	0	0.0	0	0.0	0
Total	0.0	0	134,127.9	20	33,511.1	5	3,687.7	< 1
	Native Am. Reserv.		State Park/Hist. Park		State WMA/Gameland		State Forest	
	ha	%	ha	%	ha	%	ha	%
Status 1	0.0	0	24.1	< 1	0.0	0	0.0	0
Status 2	0.0	0	46.1	< 1	35,663.0	5	0.0	0
Status 3	0.0	0	42,759.6	6	204.6	< 1	1,318.6	< 1
Status 4	0.0	0	0.0	0	461.3	< 1	0.0	0
Total	0.0	0	42,829.8	6	36,328.9	5	1,318.6	< 1
	State Coastal Reserve		ST Nat.Area/Preserve		Other State Lands		Private Cons. Easemt.	
	ha	%	ha	%	ha	%	ha	%
Status 1	0.0	0	407.2	< 1	0.0	0	0.0	0
Status 2	13,829.6	2	13,940.5	2	0.0	0	0.0	0
Status 3	0.0	0	665.2	< 1	0.0	0	282.1	< 1
Status 4	0.0	0	0.0	0	4.4	< 1	0.0	0
Total	13,829.6	2	15,012.8	2	4.4	< 1	282.1	< 1
	Private Land - No Res.		Water		Overall Total			
	ha	%	ha	%	ha	%		
Status 1	0.0	2	0.0	0	159,015.9 24			
Status 2	0.8	< 1	0.0	< 1	127,507.9 19			
Status 3	118.4	< 1	0.0	0	55,648.6 8			
Status 4	309,099.9	46	19,053.0	3	329,081.9 49			
Total	309,219.3	46	19,053.1	3	671,254.2 100			

GAP Status 1: An area having permanent protection from conversion of natural land cover and a mandated management plan in operation to maintain a natural state within which disturbance events (of natural type, frequency, and intensity) are allowed to proceed without interference or are mimicked through management.

GAP Status 2: An area having permanent protection from conversion of natural land cover and a mandated management plan in operation to maintain a primarily natural state, but which may receive use or management practices that degrade the quality of existing natural communities.

GAP Status 3: An area having permanent protection from conversion of natural land cover for the majority of the area, but subject to extractive uses of either a broad, low-intensity type or localized intense type. It also confers protection to federally listed endangered and threatened species throughout the area.

GAP Status 4: Lack of irrevocable easement or mandate to prevent conversion of natural habitat types to anthropogenic habitat types. Allows for intensive use throughout the tract. Also includes those tracts for which the existence of such restrictions or sufficient information to establish a higher status is unknown.

PREDICTED HABITAT MODEL(S):

Winter Model:

Habitat Description: Winters mostly along tidal flats, preferring mud flats to sand flats. To a lesser degree, inhabits lagoons, marshes, swamps, estuaries, sandy beaches and rocky shores. Also, mangroves where birds forage in surrounding mud, roosting in trees at high tide. Some terrestrial habitats include dunes, meadows, short grass fields. Forages along coast near mangroves or on tidal mudflats, sandy or rocky beaches or estuaries (Skeel and Mallory 1996). M. Rubino, 29dec04.

Hydrography Mask:

Brackish/Saltwater Only

Utilizes flowing water features with buffers of unlimited from and 30m into selected water features.

Utilizes open water features with buffers of unlimited from and 30m into selected water features.

Selected Map Units:

Functional Group	Map Unit Name
Beach	Atlantic Coastal Plain Northern Sandy Beach
Beach	Atlantic Coastal Plain Sea Island Beach
Beach	Atlantic Coastal Plain Southern Beach
Beach	Florida Panhandle Beach Vegetation
Beach	South Florida Shell Hash Beach
Beach	Southeast Florida Beach
Beach	Southwest Florida Beach
Beach	Unconsolidated Shore (Beach/Dune)
Brackish Tidal Marsh & Wetland	Atlantic Coastal Plain Central Salt and Brackish Tidal Marsh
Brackish Tidal Marsh & Wetland	Atlantic Coastal Plain Indian River Lagoon Tidal Marsh
Brackish Tidal Marsh & Wetland	Atlantic Coastal Plain Southern Tidal Wooded Swamp
Brackish Tidal Marsh & Wetland	East Gulf Coastal Plain Tidal Wooded Swamp
Brackish Tidal Marsh & Wetland	Florida Big Bend Salt-Brackish Tidal Marsh
Brackish Tidal Marsh & Wetland	Mississippi Sound Salt and Brackish Tidal Marsh
Brackish Tidal Marsh & Wetland	South Florida Everglades Sawgrass Marsh
Brackish Tidal Marsh & Wetland	South Florida Mangrove Swamp
Brackish Tidal Marsh & Wetland	Southwest Florida Perched Barriers Salt Swamp and Lagoon - Mangrove Modifier
Brackish Tidal Marsh & Wetland	Southwest Florida Perched Barriers Salt Swamp and Lagoon - Marsh Modifier
Coastal Dune & Freshwater Wetland	Atlantic and Gulf Coastal Plain Interdunal Wetland
Water	Open Water (Brackish/Salt)

CITATIONS:

American Ornithologists' Union (AOU), Committee on Classification and Nomenclature. 1983. Check-list of North American Birds. Sixth Edition. American Ornithologists' Union, Allen Press, Inc., Lawrence, Kansas.

Godfrey, W.E. 1966. The birds of Canada. National Museums of Canada. Ottawa. 428 pp.

Handel, C. M., and C. P. Dau. 1988. Seasonal occurrence of migrant whimbrels and bristle-thighed curlews on the Yukon-Kuskokwim Delta, Alaska. Condor 90:782-790.

Harrison, C. 1978. A field guide to the nests, eggs and nestlings of North American birds. Collins, Cleveland, Ohio.

Hayman, P., J. Marchant, and T. Prater. 1986. Shorebirds: an identification guide to the waders of the world. Houghton Mifflin Company, Boston, Massachusetts. 412 pp.

Johnson, S.R., and D.R. Herter. 1989. The birds of the Beaufort Sea. BP Exploration (Alaska) Inc., Anchorage, Alaska. 372 pp.

Morrison, R. I. G., and R. K. Ross. 1989. Atlas of Nearctic shorebirds on the coast of South America. Vols. 1 and 2. Canadian Wildl. Serv. Spec. Publ. 325 pp.

Robert, M., R. McNeil, and A. Leduc. 1989. Conditions and significance of night feeding in shorebirds and other water birds in a tropical lagoon. Auk 106:94-101.

Skeel, M. A. 1983. Nesting success, density, and nest-site selection of the whimbrel (NUMENIUS PHAEOPUS) in different habitats. Can. J. Zool. 61:218-225.

Skeel, M. A., and E. P. Mallory. 1996. Whimbrel (Numenius phaeopus). In The Birds of North America, No. 219 (A. Poole and F. Gill, eds.). The Academy of Natural Sciences, Philadelphia, PA, and The American Ornithologists' Union, Washington, D.C.

Stiles, F.G., and A.F. Skutch. 1989. A guide to the birds of Costa Rica. Comstock Publ. Associates, Cornell University Press, Ithaca, New York. 511 pp.

Terres, J.K. 1980. The Audubon Society encyclopedia of North American birds. Alfred A. Knopf, New York.

Zink, R. M., S. Rohwer, A. V. Andreev, and D. L. Dittman. 1995. Trans-Beringia comparisons of mitochondrial DNA differentiation in birds. *Condor* 97:639-649.

For more information:: SE-GAP Analysis Project / BaSIC
127 David Clark Labs
Dept. of Biology, NCSU
Raleigh, NC 27695-7617
(919) 513-2853
www.basic.ncsu.edu/segap

Compiled: 15 September 2011

This data was compiled and/or developed
by the Southeast GAP Analysis Project at
The Biodiversity and Spatial Information
Center, North Carolina State University.