



SOUTHEAST GAP ANALYSIS PROJECT



Species Modeling Report

Tundra Swan

Cygnus columbianus

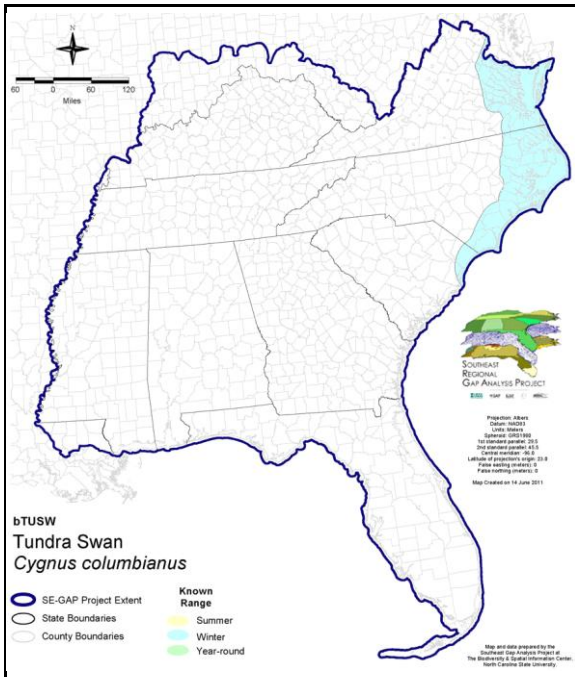
Taxa: Avian
 Order: Anseriformes
 Family: Anatidae

SE-GAP Spp Code: **bTUSW**

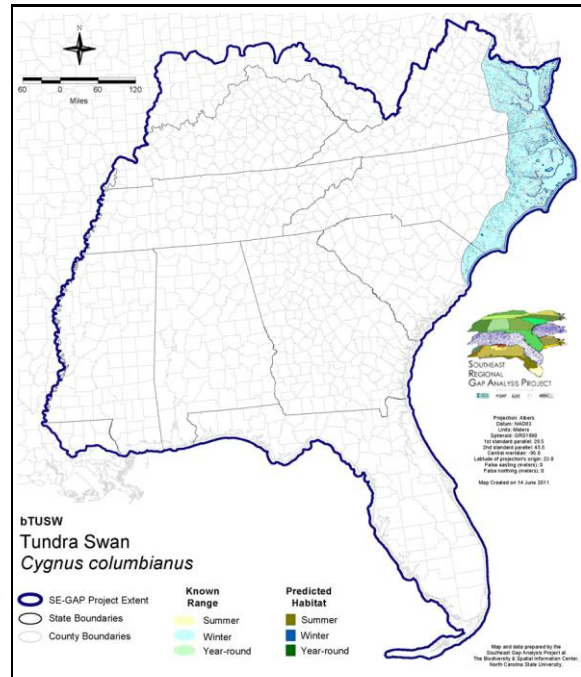
ITIS Species Code: 174987

NatureServe Element Code: ABNJB02010

KNOWN RANGE:



PREDICTED HABITAT:



Range Map Link: http://www.basic.ncsu.edu/segap/datazip/maps/SE_Range_bTUSW.pdf

Predicted Habitat Map Link: http://www.basic.ncsu.edu/segap/datazip/maps/SE_Dist_bTUSW.pdf

GAP Online Tool Link: <http://www.gapservice.ncsu.edu/segap/segap/index2.php?species=bTUSW>

Data Download: http://www.basic.ncsu.edu/segap/datazip/region/vert/bTUSW_se00.zip

PROTECTION STATUS:

Reported on March 14, 2011

Federal Status: ---

State Status: ID (G), KY (N), NJ (INC), NV (YES), NY (PB), RI (Not Listed), UT (None), BC (3 (2005)), QC (Non suivie)

NS Global Rank: G5

NS State Rank: AK (S4B), AL (SNR), AR (SNA), AZ (S1N), CA (SNRN), CO (SNA), CT (SNA), DC (S2N), DE (S3N), FL (SNA), GA (S3), IA (SNA), ID (S2N), IL (SNA), IN (SNA), KS (SNA), KY (SNA), LA (SNA), MD (S4N), ME (SNA), MI (SNRN), MN (SNRM), MO (SNA), MS (SNA), MT (SNA), NC (S5N), ND (SNA), NE (SNRN), NH (SNA), NJ (S4N), NM (S4N), NV (S4N), NY (SNRN), OH (SNRN), OK (SNA), OR (S4), PA (S3N), RI (SNA), SC (SNRN), SD (SNA), TN (S3N), TX (S1N), UT (S3N), VA (SNRN), VT (SNA), WA (S4N), WI (SNA), WV (S1S2N), WY (S2N), AB (SNA), BC (S3N), LB (SNA), MB (S4B), MB (S4B), NB (SNA), NF (SNA), NS (SNA), NT (SNRB), NU (SNRB), ON (S4), ON (S4), PE (SNA), QC (S3B), SK (S5M), SK (S5M), YT (S4B,S3M)

SUMMARY OF PREDICTED HABITAT BY MANAGMENT AND GAP PROTECTION STATUS:

	US FWS		US Forest Service		Tenn. Valley Author.		US DOD/ACOE	
	ha	%	ha	%	ha	%	ha	%
Status 1	1,805.9	< 1	0.0	0	0.0	0	0.0	0
Status 2	3,021.9	< 1	0.0	0	0.0	0	140.8	< 1
Status 3	64.9	< 1	296.9	< 1	0.0	0	2,949.4	< 1
Status 4	11.3	< 1	0.0	0	0.0	0	1.8	< 1
Total	4,904.1	< 1	296.9	< 1	0.0	0	3,092.0	< 1
	US Dept. of Energy		US Nat. Park Service		NOAA		Other Federal Lands	
	ha	%	ha	%	ha	%	ha	%
Status 1	0.0	0	0.0	0	60.9	< 1	0.0	0
Status 2	0.0	0	674.2	< 1	260.4	< 1	0.0	0
Status 3	0.0	0	1,020.7	< 1	0.0	0	130.1	< 1
Status 4	0.0	0	0.0	0	0.0	0	0.0	0
Total	0.0	0	1,694.9	< 1	321.3	< 1	130.1	< 1
	Native Am. Reserv.		State Park/Hist. Park		State WMA/Gameland		State Forest	
	ha	%	ha	%	ha	%	ha	%
Status 1	0.0	0	0.0	0	0.0	0	0.0	0
Status 2	0.0	0	9.7	< 1	2,311.7	< 1	0.0	0
Status 3	0.0	0	612.7	< 1	534.8	< 1	28.4	< 1
Status 4	0.0	0	0.0	0	424.0	< 1	0.0	0
Total	0.0	0	622.4	< 1	3,270.4	< 1	28.4	< 1
	State Coastal Reserve		ST Nat.Area/Preserve		Other State Lands		Private Cons. Easemt.	
	ha	%	ha	%	ha	%	ha	%
Status 1	0.0	0	0.0	0	0.0	0	0.0	0
Status 2	460.4	< 1	784.5	< 1	0.0	0	0.0	0
Status 3	0.0	0	0.0	0	0.0	0	0.3	< 1
Status 4	0.0	0	0.0	0	5.8	< 1	0.0	0
Total	460.4	< 1	784.5	< 1	5.8	< 1	0.3	< 1
	Private Land - No Res.		Water		Overall Total			
	ha	%	ha	%	ha	%		
Status 1	0.0	0	0.0	0	1,866.9	< 1		
Status 2	0.0	0	0.0	0	7,663.6	1		
Status 3	0.0	0	0.0	0	5,638.2	1		
Status 4	499,341.2	96	2,151.2	< 1	502,348.0	97		
Total	499,341.2	96	2,151.2	< 1	517,516.7	100		

GAP Status 1: An area having permanent protection from conversion of natural land cover and a mandated management plan in operation to maintain a natural state within which disturbance events (of natural type, frequency, and intensity) are allowed to proceed without interference or are mimicked through management.

GAP Status 2: An area having permanent protection from conversion of natural land cover and a mandated management plan in operation to maintain a primarily natural state, but which may receive use or management practices that degrade the quality of existing natural communities.

GAP Status 3: An area having permanent protection from conversion of natural land cover for the majority of the area, but subject to extractive uses of either a broad, low-intensity type or localized intense type. It also confers protection to federally listed endangered and threatened species throughout the area.

GAP Status 4: Lack of irrevocable easement or mandate to prevent conversion of natural habitat types to anthropogenic habitat types. Allows for intensive use throughout the tract. Also includes those tracts for which the existence of such restrictions or sufficient information to establish a higher status is unknown.

PREDICTED HABITAT MODEL(S):

Winter Model:

Habitat Description: Tundra swans winter along the east coast from New Jersey to South Carolina. Within their wintering range this species occupies shallow estuarine tidal areas, freshwater lakes, ponds, rivers and will extensively utilize agricultural fields for foraging (Limpert & Earnst 1994). Amy Silvano 12apr05

Ecosystem Classifiers: Ag, Freshwater tidal, Lakes/Ponds/Rivers, Floodplain/Riparian-herb mods as PMUs and Forested as AMUs. 12apr05

Hydrography Mask:

Utilizes flowing water features with buffers of 250m from and 2000m into selected water features.

Utilizes open water features with buffers of 250m from and 2000m into selected water features.

Selected Map Units:

Functional Group	Map Unit Name
Anthropogenic	Row Crop
Beach	Unconsolidated Shore (Beach/Dune)
Coastal Dune & Freshwater Wetland	Atlantic and Gulf Coastal Plain Interdunal Wetland
Freshwater Tidal Marsh & Wetland	Atlantic Coastal Plain Central Fresh-Oligohaline Tidal Marsh
Freshwater Tidal Marsh & Wetland	Atlantic Coastal Plain Embayed Region Tidal Freshwater Marsh
Freshwater Tidal Marsh & Wetland	Atlantic Coastal Plain Northern Fresh and Oligohaline Tidal Marsh
Water	Open Water (Brackish/Salt)
Water	Open Water (Fresh)
Wetlands	Atlantic Coastal Plain Blackwater Stream Floodplain Forest - Herbaceous Modifier
Wetlands	Atlantic Coastal Plain Depression Pondshore
Wetlands	Atlantic Coastal Plain Large Natural Lakeshore
Wetlands	Atlantic Coastal Plain Northern Pondshore
Wetlands	Unconsolidated Shore (Lake/River/Pond)

Selected Secondary Map Units within 60m of Primary Map Units:

Functional Group	Map Unit Name
Wetlands	Atlantic Coastal Plain Blackwater Stream Floodplain Forest - Forest Modifier
Wetlands	Atlantic Coastal Plain Brownwater Stream Floodplain Forest
Wetlands	Atlantic Coastal Plain Small Blackwater River Floodplain Forest
Wetlands	Atlantic Coastal Plain Small Brownwater River Floodplain Forest

CITATIONS: American Ornithologists' Union (AOU), Committee on Classification and Nomenclature. 1983. Check-list of North American Birds. Sixth Edition. American Ornithologists' Union, Allen Press, Inc., Lawrence, Kansas.

Castelli, P. M., and J. E. Applegate. 1989. Economic loss caused by tundra swans feeding in cranberry bogs. *Trans. Northeast Sect. Wildl. Soc.* 46:17-23.

Godfrey, W.E. 1966. *The birds of Canada*. National Museums of Canada. Ottawa. 428 pp.

Harrison, C. 1978. *A field guide to the nests, eggs and nestlings of North American birds*. Collins, Cleveland, Ohio.

Johnson, S.R., and D.R. Herter. 1989. *The birds of the Beaufort Sea*. BP Exploration (Alaska) Inc., Anchorage, Alaska. 372 pp.

Kortright, F.H. 1967. *The ducks, geese, and swans of North America*. The Stackpole Company, Harrisburg, PA, and Wildlife Management Institute, Washington, D.C. 476 pp.

Lumsden, H. G. 1984. The pre-settlement breeding distribution of trumpeter, CYGNUS BUCCINATOR, and tundra swans, C. COLUMBIANUS, in eastern Canada. *Can. Field-Nat.* 98:415-424.

Meng, A., R.E. Carter, and D.T. Parkin. 1990. The variability of DNA fingerprints in three species of swan. *Heredity* 64:73-80.

Pratt, H.D., P.L. Bruner, and D.G. Berrett. 1987. *A field guide to the birds of Hawaii and the tropical Pacific*. Princeton University Press, Princeton, New Jersey. 409 pp. + 45 plates.

Root, T. 1988. *Atlas of wintering North American birds: An analysis of Christmas Bird Count data*. University of Chicago Press. 336 pp.

Terres, J.K. 1980. *The Audubon Society encyclopedia of North American birds*. Alfred A. Knopf, New York.

For more information:: SE-GAP Analysis Project / BaSIC
127 David Clark Labs
Dept. of Biology, NCSU
Raleigh, NC 27695-7617
(919) 513-2853
www.basic.ncsu.edu/segap

Compiled: 15 September 2011

This data was compiled and/or developed
by the Southeast GAP Analysis Project at
The Biodiversity and Spatial Information
Center, North Carolina State University.