

# SOUTHEAST GAP ANALYSIS PROJECT



## Species Modeling Report

### Sora

*Porzana carolina*

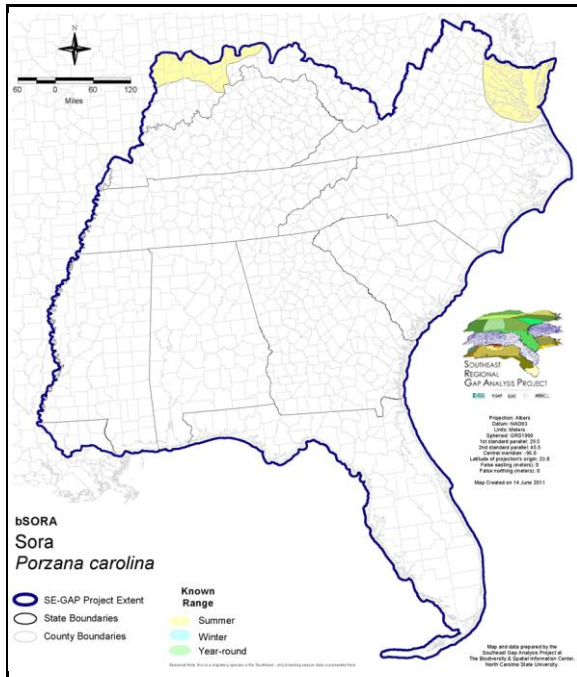
Taxa: Avian  
 Order: Gruiformes  
 Family: Rallidae

SE-GAP Spp Code: **bSORA**

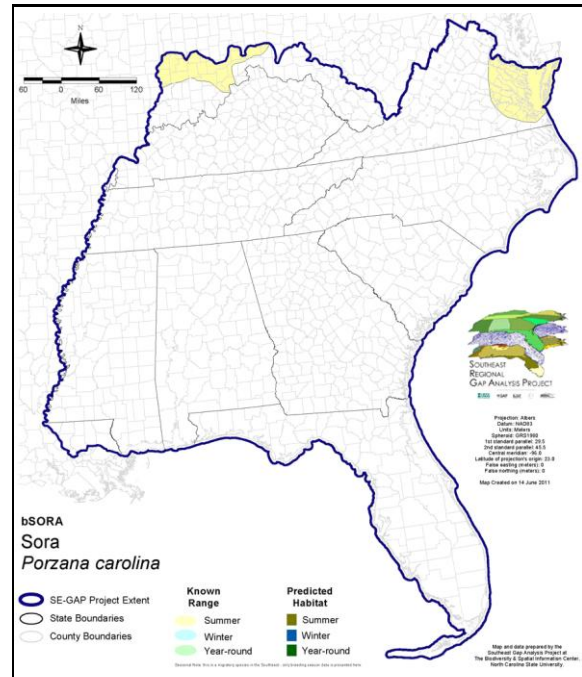
ITIS Species Code: 176242

NatureServe Element Code: ABNME08020

#### KNOWN RANGE:



#### PREDICTED HABITAT:



Range Map Link: [http://www.basic.ncsu.edu/segap/datazip/maps/SE\\_Range\\_bSORA.pdf](http://www.basic.ncsu.edu/segap/datazip/maps/SE_Range_bSORA.pdf)

Predicted Habitat Map Link: [http://www.basic.ncsu.edu/segap/datazip/maps/SE\\_Dist\\_bSORA.pdf](http://www.basic.ncsu.edu/segap/datazip/maps/SE_Dist_bSORA.pdf)

GAP Online Tool Link: <http://www.gapservice.ncsu.edu/segap/segap/index2.php?species=bSORA>

Data Download: [http://www.basic.ncsu.edu/segap/datazip/region/vert/bSORA\\_se00.zip](http://www.basic.ncsu.edu/segap/datazip/region/vert/bSORA_se00.zip)

#### PROTECTION STATUS:

Reported on March 14, 2011

Federal Status: ---

State Status: AL (GB), ID (P), ID (P), KY (N), MA (- WL), NH (SC), NJ (SC), NV (YES), NY (PB - GS), OH (SC), RI (Concern), UT (None), BC (4 (2005)), QC (Non suivie)

NS Global Rank: G5

NS State Rank: AK (S3B), AL (S5N), AR (S4N), AZ (S4), CA (SNRB,SNRN), CO (S3S4B), CO (S3S4B), CT (S2B), CT (S2B), DC (S2N), DE (S2), FL (SNRN), GA (S4), IA (S3B,S5N), ID (S5B), ID (S5B), IL (S3), IN (S4B), IN (S4B), KS (S1B,S3N), KY (SNA), LA (S5N), MA (S2S3B,S4N), MD (S1B), MD (S1B), ME (S4B), MI (S4), MN (SNRB), MO (S2), MS (S5N), MT (S5B), MT (S5B), NC (S3N), ND (SNRB), NE (S4), NH (S3B), NJ (S3), NM (S4B,S4N), NV (S3S4), NY (S4), OH (S3), OK (S5B), OR (S4), PA (S3B), RI (S1B,S1N), SC (SNRN), SD (S5B), SD (S5B), TN (S1B,S4N), TX (S3B,S4N), UT (S4S5B,S3N), VA (S1B,S2N), VT (S2S3B,S3N), WA (S4B), WA (S4B), WI (S4B), WI (S4B), WV (S1B,S1N), WY (S4B), WY (S4B), AB (S5), BC (S4S5), LB (S2S3B), MB (S5B), MB (S5B), NB (S4B), NF (S1B), NS (S4B), NT (SNRB), ON (S4B), PE (S5B), QC (S5B), SK (S5B), YT (S4B)

**SUMMARY OF PREDICTED HABITAT BY MANAGMENT AND GAP PROTECTION STATUS:**

	US FWS		US Forest Service		Tenn. Valley Author.		US DOD/ACOE	
	ha	%	ha	%	ha	%	ha	%
Status 1	15.3	< 1	0.0	0	0.0	0	0.0	0
Status 2	139.0	3	0.0	0	0.0	0	0.0	0
Status 3	0.5	< 1	0.0	0	0.0	0	79.5	2
Status 4	0.0	0	0.0	0	0.0	0	3.0	< 1
Total	154.8	3	0.0	0	0.0	0	82.4	2
	US Dept. of Energy		US Nat. Park Service		NOAA		Other Federal Lands	
	ha	%	ha	%	ha	%	ha	%
Status 1	0.0	0	0.0	0	0.0	0	0.0	0
Status 2	0.0	0	0.0	0	23.0	< 1	0.0	0
Status 3	0.0	0	12.4	< 1	0.0	0	0.0	0
Status 4	0.0	0	0.0	0	0.0	0	0.0	0
Total	0.0	0	12.4	< 1	23.0	< 1	0.0	0
	Native Am. Reserv.		State Park/Hist. Park		State WMA/Gameland		State Forest	
	ha	%	ha	%	ha	%	ha	%
Status 1	0.0	0	0.0	0	0.0	0	0.0	0
Status 2	0.0	0	< 0.1	< 1	127.0	3	0.0	0
Status 3	0.0	0	7.1	< 1	0.0	0	0.0	0
Status 4	0.0	0	0.0	0	0.0	0	0.0	0
Total	0.0	0	7.2	< 1	127.0	3	0.0	0
	State Coastal Reserve		ST Nat.Area/Preserve		Other State Lands		Private Cons. Easemt.	
	ha	%	ha	%	ha	%	ha	%
Status 1	0.0	0	0.0	0	0.0	0	0.0	0
Status 2	2.3	< 1	86.6	2	0.0	0	0.0	0
Status 3	0.0	0	0.0	0	0.0	0	0.0	0
Status 4	0.0	0	0.0	0	0.0	0	0.0	0
Total	2.3	< 1	86.6	2	0.0	0	0.0	0
	Private Land - No Res.		Water		Overall Total			
	ha	%	ha	%	ha	%		
Status 1	0.0	0	0.0	0	15.3	< 1		
Status 2	0.0	0	0.0	0	377.9	8		
Status 3	0.0	0	0.0	0	99.5	2		
Status 4	4,401.7	88	95.7	2	4,500.4	90		
Total	4,401.7	88	95.7	2	4,993.1	100		

GAP Status 1: An area having permanent protection from conversion of natural land cover and a mandated management plan in operation to maintain a natural state within which disturbance events (of natural type, frequency, and intensity) are allowed to proceed without interference or are mimicked through management.

GAP Status 2: An area having permanent protection from conversion of natural land cover and a mandated management plan in operation to maintain a primarily natural state, but which may receive use or management practices that degrade the quality of existing natural communities.

GAP Status 3: An area having permanent protection from conversion of natural land cover for the majority of the area, but subject to extractive uses of either a broad, low-intensity type or localized intense type. It also confers protection to federally listed endangered and threatened species throughout the area.

GAP Status 4: Lack of irrevocable easement or mandate to prevent conversion of natural habitat types to anthropogenic habitat types. Allows for intensive use throughout the tract. Also includes those tracts for which the existence of such restrictions or sufficient information to establish a higher status is unknown.

## PREDICTED HABITAT MODEL(S):

### Summer Model:

Habitat Description: Primarily breed in shallow freshwater emergent wetlands (e.g., marshes of cattail, sedge, blue-joint, or bulrush), less frequently found in bogs, fens, wet meadows, and flooded fields, sometimes foraging on open mudflats adjacent to marshy habitat. They also occur locally in swamps, along slough borders, and in mangroves. Can use very small marshes (e.g., 4 nests have been found in a half-acre marsh) (see Brewer et al. 1991).

Nests were an average of 15 cm above water level in marsh vegetation, often near open water. Nest is anchored to emergent plants or sometimes placed on top of a mound (Cogswell 1977).

Quoted from state habitat notes -15Feb05

Customized Model: rare in salt water so didn't place in salt water. Uses brackish.

Species' range includes portions of southern IN and OH where no brackish water exists. Changed model to include freshwater only in western portion of range within the SE-GAP mapping region. MJR 7 March 2008.

### Hydrography Mask:

Brackish/Saltwater Only

Utilizes open water features with buffer of 250m from selected water features.

Utilizes wet vegetation features with buffers of 250m from and unlimited into selected vegetation features.

### Selected Map Units:

Functional Group	Map Unit Name
Freshwater Tidal Marsh & Wetland	Atlantic Coastal Plain Central Fresh-Oligohaline Tidal Marsh
Freshwater Tidal Marsh & Wetland	Atlantic Coastal Plain Embayed Region Tidal Freshwater Marsh
Freshwater Tidal Marsh & Wetland	Atlantic Coastal Plain Northern Fresh and Oligohaline Tidal Marsh
Wetlands	Atlantic Coastal Plain Blackwater Stream Floodplain Forest - Herbaceous Modifier
Wetlands	Atlantic Coastal Plain Clay-Based Carolina Bay Herbaceous Wetland
Wetlands	Atlantic Coastal Plain Large Natural Lakeshore
Wetlands	Atlantic Coastal Plain Northern Basin Peat Swamp
Wetlands	Atlantic Coastal Plain Northern Basin Swamp and Wet Hardwood Forest
Wetlands	Atlantic Coastal Plain Northern Pondshore
Wetlands	Atlantic Coastal Plain Peatland Pocosin
Wetlands	Atlantic Coastal Plain Streamhead Seepage Swamp, Pocosin, and Baygall
Wetlands	Central Interior Highlands and Appalachian Sinkhole and Depression Pond
Wetlands	South-Central Interior Large Floodplain - Forest Modifier
Wetlands	South-Central Interior Large Floodplain - Herbaceous Modifier
Wetlands	South-Central Interior Small Stream and Riparian
Wetlands	Western Highland Rim Seepage Fen

- CITATIONS:** American Ornithologists' Union (AOU), Committee on Classification and Nomenclature. 1983. Check-list of North American Birds. Sixth Edition. American Ornithologists' Union, Allen Press, Inc., Lawrence, Kansas.
- Bent, A. C. 1926. Life histories of North American marsh birds. U.S. National Museum Bulletin No. 135. [reprint. 1963. Dover Publications, Inc., New York, New York].
- Brewer, R., G.A. McPeck, and R.J. Adams, Jr. 1991. The Atlas of Breeding Birds of Michigan. Michigan State University Press, East Lansing, Michigan. xvii + 594 pp.
- Cogswell, H.L. 1977. Water birds of California. Univ. California Press, Berkeley. 399 pp.
- Conway, C. J., W. R. Eddleman, and S. H. Anderson. 1994. Nesting success and survival of Virginia rails and soras. Wilson Bull. 106:466-473.
- Fannucchi, W. A., G. T. Fannucchi, and L. E. Nauman. 1986. Effects of harvesting wild rice, ZIZANIA AQUATICA, on sora rails. Can. Field-Nat. 100:533-536.
- Harrison, H.H. 1979. A field guide to western birds' nests. Houghton Mifflin Company, Boston. 279 pp.

- Raffaele, H.A. 1983. A guide to the birds of Puerto Rico and the Virgin Islands. Fondo Educativo Interamericano, San Juan, Puerto Rico. 255 pp.
- Ripley, S.D. 1977. Rails of the world. M.F. Feheley Publishers, Ltd., Toronto. 406 pp.
- Stiles, F.G., and A.F. Skutch. 1989. A guide to the birds of Costa Rica. Comstock Publ. Associates, Cornell University Press, Ithaca, New York. 511 pp.
- Terres, J.K. 1980. The Audubon Society encyclopedia of North American birds. Alfred A. Knopf, New York.

---

For more information:: SE-GAP Analysis Project / BaSIC  
127 David Clark Labs  
Dept. of Biology, NCSU  
Raleigh, NC 27695-7617  
(919) 513-2853  
[www.basic.ncsu.edu/segap](http://www.basic.ncsu.edu/segap)

Compiled: 15 September 2011

This data was compiled and/or developed  
by the Southeast GAP Analysis Project at  
The Biodiversity and Spatial Information  
Center, North Carolina State University.