



SOUTHEAST GAP ANALYSIS PROJECT



Species Modeling Report

Snow Goose

Chen caerulescens

Taxa: Avian

Order: Anseriformes

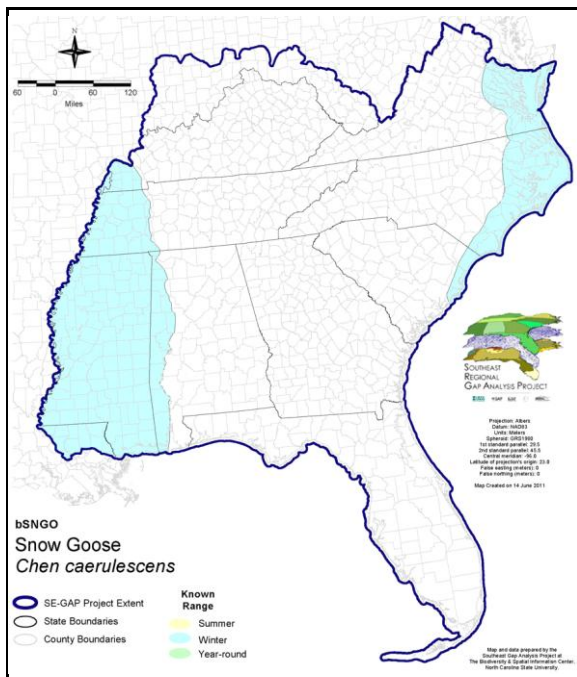
Family: Anatidae

SE-GAP Spp Code: **bSNGO**

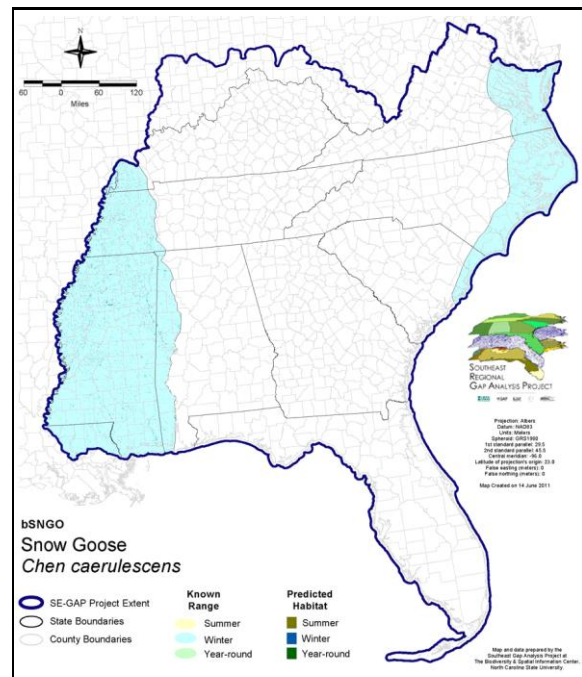
ITIS Species Code: 175038

NatureServe Element Code: ABNJB04010

KNOWN RANGE:



PREDICTED HABITAT:



Range Map Link: http://www.basic.ncsu.edu/segap/datazip/maps/SE_Range_bSNGO.pdf

Predicted Habitat Map Link: http://www.basic.ncsu.edu/segap/datazip/maps/SE_Dist_bSNGO.pdf

GAP Online Tool Link: <http://www.gapservice.ncsu.edu/segap/segap/index2.php?species=bSNGO>

Data Download: http://www.basic.ncsu.edu/segap/datazip/region/vert/bSNGO_se00.zip

PROTECTION STATUS:

Reported on March 14, 2011

Federal Status: ---

State Status: AL (GB), ID (G), KY (N), NV (YES), NY (PB - GS), RI (Not Listed), UT (None), BC (3 (2005)), QC (Non suivie)

NS Global Rank: G5

NS State Rank: AK (S5B), AL (S3N), AR (S5N), AZ (S3N), CA (SNRN), CO (S4N), CT (SNA), DC (S2N), DE (S5N), FL (SNRN), GA (S3), IA (S5N), ID (S2N), IL (SNA), IN (SNA), KS (S4N), KY (S3S4N), LA (S5N), MA (S4N), MD (S4N), ME (S3N), MI (SNRN), MN (SNRM), MN (SNRM), MO (SNRN,SNRM), MS (SNA), MT (S4N), NC (S4N), ND (SNRM), NE (SNRN), NH (SNA), NJ (S4N), NM (S5N), NV (S4N), NY (SNRN), OH (SNRN), OK (S5N), OR (S4), PA (S2N), RI (SNA), SC (SNRN), SD (SNA), TN (S4N), TX (S5), UT (SNA), VA (SNRN), VT (S5N), WA (S3N), WI (SNA), WV (S2N), WY (S5N), AB (SNA), BC (S4M), LB (SNA), MB (S5B), MB (S5B), NB (SNA), NF (SNA), NS (S3M), NT (SNRB), NU (SNRB), ON (S5B), PE (SNA), QC (S5B), SK (S5M), YT (S3B), YT (S3B)

SUMMARY OF PREDICTED HABITAT BY MANAGMENT AND GAP PROTECTION STATUS:

	US FWS		US Forest Service		Tenn. Valley Author.		US DOD/ACOE	
	ha	%	ha	%	ha	%	ha	%
Status 1	1,760.6	< 1	0.5	< 1	0.0	0	0.0	0
Status 2	1,666.8	< 1	39.7	< 1	0.0	0	3.5	< 1
Status 3	58.1	< 1	316.4	< 1	17.2	< 1	1,193.0	< 1
Status 4	0.5	< 1	0.0	0	0.0	0	7.6	< 1
Total	3,486.0	1	356.6	< 1	17.2	< 1	1,204.1	< 1
	US Dept. of Energy		US Nat. Park Service		NOAA		Other Federal Lands	
	ha	%	ha	%	ha	%	ha	%
Status 1	0.0	0	0.0	0	112.1	< 1	0.0	0
Status 2	0.0	0	1,127.7	< 1	307.4	< 1	0.0	0
Status 3	0.0	0	296.7	< 1	0.0	0	17.6	< 1
Status 4	0.0	0	2.0	0	0.0	0	0.0	0
Total	0.0	0	1,427.1	< 1	419.5	< 1	17.6	< 1
	Native Am. Reserv.		State Park/Hist. Park		State WMA/Gameland		State Forest	
	ha	%	ha	%	ha	%	ha	%
Status 1	0.0	0	0.0	0	0.0	0	0.0	0
Status 2	0.0	0	17.6	< 1	2,132.0	< 1	0.0	0
Status 3	31.5	< 1	252.2	< 1	803.8	< 1	0.6	< 1
Status 4	0.0	0	0.0	0	40.6	< 1	0.0	0
Total	31.5	< 1	269.8	< 1	2,976.4	1	0.6	< 1
	State Coastal Reserve		ST Nat.Area/Preserve		Other State Lands		Private Cons. Easemt.	
	ha	%	ha	%	ha	%	ha	%
Status 1	0.0	0	83.5	< 1	0.0	0	0.0	0
Status 2	3,631.3	1	1,051.1	< 1	0.0	0	0.0	0
Status 3	0.0	0	26.4	< 1	0.9	< 1	224.1	< 1
Status 4	0.0	0	0.0	0	0.7	< 1	0.0	0
Total	3,631.3	1	1,161.0	< 1	1.6	< 1	224.1	< 1
	Private Land - No Res.		Water		Overall Total			
	ha	%	ha	%	ha	%		
Status 1	0.0	0	0.0	0	1,956.7	< 1		
Status 2	0.0	0	0.0	6	9,977.3	4		
Status 3	35.4	< 1	0.0	0	3,273.9	1		
Status 4	253,219.1	91	8,264.3	3	261,575.5	94		
Total	253,254.4	91	8,264.4	3	276,783.4	100		

GAP Status 1: An area having permanent protection from conversion of natural land cover and a mandated management plan in operation to maintain a natural state within which disturbance events (of natural type, frequency, and intensity) are allowed to proceed without interference or are mimicked through management.

GAP Status 2: An area having permanent protection from conversion of natural land cover and a mandated management plan in operation to maintain a primarily natural state, but which may receive use or management practices that degrade the quality of existing natural communities.

GAP Status 3: An area having permanent protection from conversion of natural land cover for the majority of the area, but subject to extractive uses of either a broad, low-intensity type or localized intense type. It also confers protection to federally listed endangered and threatened species throughout the area.

GAP Status 4: Lack of irrevocable easement or mandate to prevent conversion of natural habitat types to anthropogenic habitat types. Allows for intensive use throughout the tract. Also includes those tracts for which the existence of such restrictions or sufficient information to establish a higher status is unknown.

PREDICTED HABITAT MODEL(S):

Winter Model:

Habitat Description: Snow Goose winter in both coastal freshwater and brackish marshes, bays, wet prairies, extensive sandbars, and freshwater emboundments (AOU 1983, BNA #514). Inland, they roost in freshwater marshes and wet grasslands and will also foraging extensively in pastures, and flooded agricultural fields (Hill & Frederick 1997, BNA #514). Amy Silvano 12apr05

Ecosystem Classifiers: Ag, Coastal Marshes, Brackish Marshes, Freshwater marshes, Carolina Bay Herb wetland, Lakes/rivers/Ponds, Floodplain/Riparian (Herb Mods only), Unconsolidated shores. Amy Silvano 12apr05

Hydrography Mask:

Utilizes flowing water features with buffers of 250m from and 120m into selected water features.

Utilizes open water features with buffers of 250m from and 120m into selected water features.

Selected Map Units:

Functional Group	Map Unit Name
Anthropogenic	Pasture/Hay
Anthropogenic	Row Crop
Beach	Unconsolidated Shore (Beach/Dune)
Brackish Tidal Marsh & Wetland	Atlantic Coastal Plain Central Salt and Brackish Tidal Marsh
Brackish Tidal Marsh & Wetland	Atlantic Coastal Plain Embayed Region Tidal Salt and Brackish Marsh
Brackish Tidal Marsh & Wetland	Atlantic Coastal Plain Indian River Lagoon Tidal Marsh
Brackish Tidal Marsh & Wetland	Atlantic Coastal Plain Northern Tidal Salt Marsh
Brackish Tidal Marsh & Wetland	Mississippi Sound Salt and Brackish Tidal Marsh
Coastal Dune & Freshwater Wetland	Atlantic and Gulf Coastal Plain Interdunal Wetland
Coastal Dune & Freshwater Wetland	East Gulf Coastal Plain Dune and Coastal Grassland
Freshwater Tidal Marsh & Wetland	Atlantic Coastal Plain Central Fresh-Oligohaline Tidal Marsh
Freshwater Tidal Marsh & Wetland	Atlantic Coastal Plain Embayed Region Tidal Freshwater Marsh
Freshwater Tidal Marsh & Wetland	Atlantic Coastal Plain Northern Fresh and Oligohaline Tidal Marsh
Water	Open Water (Fresh)
Wetlands	Atlantic Coastal Plain Blackwater Stream Floodplain Forest - Herbaceous Modifier
Wetlands	Atlantic Coastal Plain Depression Pondshore
Wetlands	Atlantic Coastal Plain Large Natural Lakeshore
Wetlands	Atlantic Coastal Plain Northern Pondshore
Wetlands	East Gulf Coastal Plain Large River Floodplain Forest - Herbaceous Modifier
Wetlands	East Gulf Coastal Plain Northern Depression Pondshore
Wetlands	East Gulf Coastal Plain Southern Depression Pondshore
Wetlands	Lower Mississippi River Bottomland Depressions - Herbaceous Modifier
Wetlands	Southern Coastal Plain Spring-run Stream Aquatic Vegetation
Wetlands	Unconsolidated Shore (Lake/River/Pond)

CITATIONS: American Ornithologists' Union (AOU), Committee on Classification and Nomenclature. 1983. Check-list of North American Birds. Sixth Edition. American Ornithologists' Union, Allen Press, Inc., Lawrence, Kansas.

Avise, J. C., et al. 1992. Matriarchal population genetic structure in an avian species with female natal philopatry. *Evolution* 46:1084-1096.

Bartlett, D. 1975. The flight of the snow geese. 189 pp.

Cogswell, H.L. 1977. Water birds of California. Univ. California Press, Berkeley. 399 pp.

Cooch, E. G., et al. 1989. Long-term decline in fecundity in a snow goose population: evidence for density dependence? *J. Anim. Ecol.* 58:711-726.

Cooke, F., D. T. Parkin, and R. F. Rockwell. 1988. Evidence of former allopatry of the two color phases of lesser snow geese (CHEN CAERULSCENS CAERULESCENS). *Auk* 105:467-479.

Gauthier, G., J.-F. Giroux, and J. Bedard. 1992. Dynamics of fat and protein reserves during winter and spring migration in greater snow geese. *Can. J. Zool.* 70:2077-2087.

- Giroux, J.-F., and J. Bedard. 1988. Use of bulrush marshes by greater snow geese during staging. *J. Wildl. Manage.* 52:415-420.
- Godfrey, W.E. 1966. *The birds of Canada*. National Museums of Canada. Ottawa. 428 pp.
- Jackson, S. L., D. S. Hik, and R. F. Rockwell. 1988. The influence of nesting habitat on reproductive success of the lesser snow goose. *Can. J. Zool.* 66:1699-1703.
- Johnson, S.R., and D.R. Herter. 1989. *The birds of the Beaufort Sea*. BP Exploration (Alaska) Inc., Anchorage, Alaska. 372 pp.
- Kortright, F.H. 1967. *The ducks, geese, and swans of North America*. The Stackpole Company, Harrisburg, PA, and Wildlife Management Institute, Washington, D.C. 476 pp.
- Livezey, B. C. 1986. A phylogenetic analysis of recent Anseriform genera using morphological characters. *Auk* 103:737-754.
- McLanress, M. R. 1983. Temporal changes in habitat selection and nest spacing in a colony of Ross' and lesser snow geese. *Auk* 100:335-343.
- Pratt, H.D., P.L. Bruner, and D.G. Berrett. 1987. *A field guide to the birds of Hawaii and the tropical Pacific*. Princeton University Press, Princeton, New Jersey. 409 pp. + 45 plates.
- Ratcliffe, L., R. F. Rockwell, and F. Cooke. 1988. Recruitment and maternal age in lesser snow geese *CHEN CAERULESCENS CAERULESCENS*. *J. Anim. Ecol.* 57:553-563.
- Root, T. 1988. *Atlas of wintering North American birds: An analysis of Christmas Bird Count data*. University of Chicago Press. 336 pp.
- Soper, J. D. 1942. Life history of the blue goose. *Proc. Boston Soc. Nat. Hist* 42:121-225.
- Taylor, J. P., and R. E. Kirby. 1990. Experimental dispersal of wintering snow and Ross' geese. *Wildl. Soc. Bull.* 18:312-319.
- Terres, J.K. 1980. *The Audubon Society encyclopedia of North American birds*. Alfred A. Knopf, New York.
- U.S. Fish & Wildl. Serv. 1988. SEIS 88. Final supplemental environmental impact statement: issuance of annual regulations permitting the sport hunting of migratory birds. x + 340 pp.

For more information:: SE-GAP Analysis Project / BaSIC
127 David Clark Labs
Dept. of Biology, NCSU
Raleigh, NC 27695-7617
(919) 513-2853
www.basic.ncsu.edu/segap

Compiled: 15 September 2011

This data was compiled and/or developed by the Southeast GAP Analysis Project at The Biodiversity and Spatial Information Center, North Carolina State University.