



SOUTHEAST GAP ANALYSIS PROJECT



Species Modeling Report

Shiny Cowbird

Molothrus bonariensis

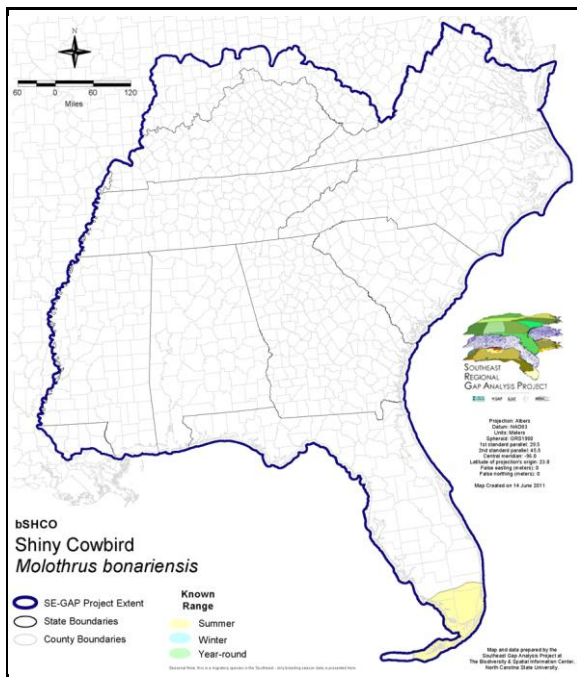
Taxa: Avian
 Order: Passeriformes
 Family: Icteridae

SE-GAP Spp Code: **bSHCO**

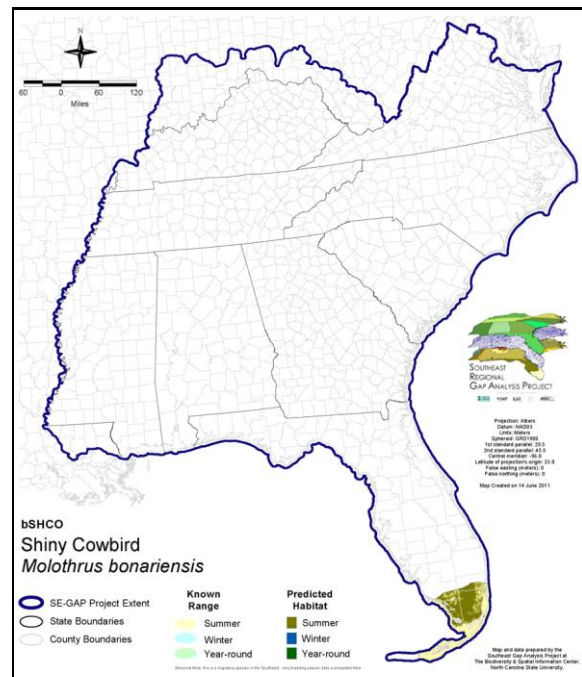
ITIS Species Code: 179117

NatureServe Element Code: ABPBXB7010

KNOWN RANGE:



PREDICTED HABITAT:



Range Map Link: http://www.basic.ncsu.edu/segap/datazip/maps/SE_Range_bSHCO.pdf

Predicted Habitat Map Link: http://www.basic.ncsu.edu/segap/datazip/maps/SE_Dist_bSHCO.pdf

GAP Online Tool Link: <http://www.gapservice.ncsu.edu/segap/segap/index2.php?species=bSHCO>

Data Download: http://www.basic.ncsu.edu/segap/datazip/region/vert/bSHCO_se00.zip

PROTECTION STATUS:

Reported on March 14, 2011

Federal Status: ---

State Status: ---

NS Global Rank: G5

NS State Rank: AL (SNR), FL (SNR), GA (SNA), LA (SNA), MS (SNA), NC (SNA), OK (SNA), SC (SNA), TX (SNA), VA (SNA), NB (SNA)

SUMMARY OF PREDICTED HABITAT BY MANAGMENT AND GAP PROTECTION STATUS:

	US FWS		US Forest Service		Tenn. Valley Author.		US DOD/ACOE	
	ha	%	ha	%	ha	%	ha	%
Status 1	3,768.6	< 1	0.0	0	0.0	0	0.0	0
Status 2	0.0	0	0.0	0	0.0	0	0.0	0
Status 3	0.0	0	0.0	0	0.0	0	1,514.9	< 1
Status 4	0.0	0	0.0	0	0.0	0	0.0	0
Total	3,768.6	< 1	0.0	0	0.0	0	1,514.9	< 1
	US Dept. of Energy		US Nat. Park Service		NOAA		Other Federal Lands	
	ha	%	ha	%	ha	%	ha	%
Status 1	0.0	0	378,213.8	45	0.0	0	0.0	0
Status 2	0.0	0	0.0	0	551.6	< 1	0.0	0
Status 3	0.0	0	121,344.2	15	0.0	0	0.0	0
Status 4	0.0	0	0.0	0	0.0	0	0.0	0
Total	0.0	0	499,558.1	60	551.6	< 1	0.0	0
	Native Am. Reserv.		State Park/Hist. Park		State WMA/Gameland		State Forest	
	ha	%	ha	%	ha	%	ha	%
Status 1	0.0	0	0.0	0	0.0	0	0.0	0
Status 2	0.0	0	0.0	0	126,919.2	15	0.0	0
Status 3	0.0	0	31,191.4	4	0.0	0	0.0	0
Status 4	0.0	0	0.0	0	0.0	0	0.0	0
Total	0.0	0	31,191.4	4	126,919.2	15	0.0	0
	State Coastal Reserve		ST Nat.Area/Preserve		Other State Lands		Private Cons. Easemt.	
	ha	%	ha	%	ha	%	ha	%
Status 1	0.0	0	0.0	0	0.0	0	0.0	0
Status 2	0.0	0	0.0	0	0.0	0	0.0	0
Status 3	0.0	0	0.0	0	0.0	0	0.0	0
Status 4	0.0	0	0.0	0	0.0	0	0.0	0
Total	0.0	0	0.0	0	0.0	0	0.0	0
	Private Land - No Res.		Water		Overall Total			
	ha	%	ha	%	ha	%	ha	%
Status 1	0.0	0	0.0	0	381,982.4 46			
Status 2	0.0	0	0.0	0	127,470.8 15			
Status 3	0.0	0	0.0	0	154,050.5 18			
Status 4	152,435.4	18	17,012.1	2	169,447.5 20			
Total	152,435.4	18	17,012.1	2	832,951.2 100			

GAP Status 1: An area having permanent protection from conversion of natural land cover and a mandated management plan in operation to maintain a natural state within which disturbance events (of natural type, frequency, and intensity) are allowed to proceed without interference or are mimicked through management.

GAP Status 2: An area having permanent protection from conversion of natural land cover and a mandated management plan in operation to maintain a primarily natural state, but which may receive use or management practices that degrade the quality of existing natural communities.

GAP Status 3: An area having permanent protection from conversion of natural land cover for the majority of the area, but subject to extractive uses of either a broad, low-intensity type or localized intense type. It also confers protection to federally listed endangered and threatened species throughout the area.

GAP Status 4: Lack of irrevocable easement or mandate to prevent conversion of natural habitat types to anthropogenic habitat types. Allows for intensive use throughout the tract. Also includes those tracts for which the existence of such restrictions or sufficient information to establish a higher status is unknown.

PREDICTED HABITAT MODEL(S):

Summer Model:

Habitat Description: Shiny cowbirds use various habitats but prefers open areas (Cruz et al. 1989). Partly open situations with scattered trees, open woodland, cultivated lands, pastures, marshes, and around human habitation (AOU 1983). Brood parasite and host generalist; lays eggs in nests of many other bird species.

Quoted from habitat notes K. Cook 5-22-05

Additional information:

"Breeding habitat consists of semiopen habitats, especially patches of trees and shrubs surrounded by agricultural areas. Also uses fields, tree groves near farms, gardens, and plantations. Also occurs in undisturbed habitats: riparian thickets, savanna, scrub habitats in semiarid areas, and mangroves (Post and Wiley 1977a, Cavalcanti and Pimentel 1988, Ridgely and Tudor 1989, Fjeldså and Krabbe 1990). In S. Carolina and Florida, most often in suburban areas along roads, on lawns, and at bird feeders (Post et al. 1993, Stevenson and Anderson 1994)." (Lowther and Post 1999).

Mermoz and Rebores (2003) report that shiny cowbirds use marshes in Argentina. It is unclear whether they would use salt marshes, but since they are highly generalist and use mangroves I placed them in salt marshes. K. Cook 5-22-05

Selected Map Units:

Functional Group	Map Unit Name
Anthropogenic	Developed Open Space
Anthropogenic	Low Intensity Developed
Anthropogenic	Pasture/Hay
Anthropogenic	Row Crop
Anthropogenic	Successional Grassland/Herbaceous
Anthropogenic	Successional Grassland/Herbaceous (Other)
Anthropogenic	Successional Grassland/Herbaceous (Utility Swath)
Anthropogenic	Successional Shrub/Scrub (Clear Cut)
Anthropogenic	Successional Shrub/Scrub (Other)
Anthropogenic	Successional Shrub/Scrub (Utility Swath)
Brackish Tidal Marsh & Wetland	South Florida Everglades Sawgrass Marsh
Brackish Tidal Marsh & Wetland	South Florida Mangrove Swamp
Brackish Tidal Marsh & Wetland	Southwest Florida Perched Barriers Salt Swamp and Lagoon - Mangrove Modifier
Brackish Tidal Marsh & Wetland	Southwest Florida Perched Barriers Salt Swamp and Lagoon - Marsh Modifier
Coastal Dune & Freshwater Wetland	Southwest Florida Dune and Coastal Grassland
Forest/Woodland	South Florida Pine Rockland
Forest/Woodland	Southeast Florida Coastal Strand and Maritime Hammock
Forest/Woodland	Southwest Florida Coastal Strand and Maritime Hammock
Prairie	Florida Dry Prairie
Wetlands	South Florida Bayhead Swamp
Wetlands	South Florida Dwarf Cypress Savanna
Wetlands	South Florida Freshwater Slough and Gator Hole
Wetlands	South Florida Hardwood Hammock
Wetlands	South Florida Pine Flatwoods
Wetlands	South Florida Pond-Apple/Popash Slough
Wetlands	South Florida Wet Marl Prairie
Wetlands	South Florida Willow Head

CITATIONS: American Ornithologists' Union (AOU), Committee on Classification and Nomenclature. 1983. Check-list of North American Birds. Sixth Edition. American Ornithologists' Union, Allen Press, Inc., Lawrence, Kansas.

American Ornithologists' Union. 1989. Thirty-seventh supplement to the American Ornithologists' Union Checklist of North American birds. Auk 106:532-538.

- Borja A., R. A. 1990. [The biological cycle and economic impact of the shiny cowbird (MOLOTHRUS BONARIENSIS CABANISII).] Bol. Soc. Antioqueña Ornitol. (Medellin) 1(2):4-11.
- Cavalcanti, R.B., and T.M. Pimentel. 1988. Shiny cowbird parasitism in central Brazil. Condor 90:40-43.
- Cruz, A., J. W. Wiley, T. K. Nakamura, and W. Post. 1989. The shiny cowbird in the West Indian region--biogeographical and ecological implications. Pages 519-540 in C. A. Woods, ed. Biogeography of the West Indies, Sandhill Crane Press, Gainesville, Florida
- Cruz, A., T. D. Manolis, and R. W. Andrews. 1990. Reproductive interactions of the shiny cowbird MOLOTHRUS BONARIENSIS and the yellow-hooded blackbird AGELAIUS ICTEROCEPHALUS in Trinidad. Ibis 132:436-444.
- Fjeldsã, Jon; Krabbe, Niels. 1990. Birds of the high Andes, a manual to the birds of the temperate zone of the Andes and Patagonia, South America. Dinamarca: Zoological Museum, 1990; 876p, ill; 24cm.
- Friedmann, H. 1929. The cowbirds: a study in the biology of social parasitism. Charles C. Thomas, Publisher, Springfield, Illinois.
- Friedmann, H., and L.F. Kiff. 1985. The parasitic cowbirds and their hosts. Proceedings Western Foundation of Vertebrate Zoology 2(4). 78 pp.
- Hagan, J.M., III, and D.W. Johnston, editors. 1992. Ecology and conservation of neotropical migrant landbirds. Smithsonian Institution Press, Washington, D.C. xiii + 609 pp.
- Heisterberg, J. F., and F. Nunez-Garcia. 1988. Controlling shiny cowbirds in Puerto Rico. Proc. Vertebr. Pest Conf. 13:295-300.
- Hilty, S.L., and W.L. Brown. 1986. A guide to the birds of Colombia. Princeton University Press, Princeton, New Jersey. 836 pp.
- Lowther, P., and W. Post. 1999. Shiny Cowbird (*Molothrus bonariensis*). in A. P. a. F. Gill, editor. The Birds of North America. The Birds of North America, Inc., Philadelphia, PA.
- Mermoz, M. E., and J. C. Rebores. 1999. Egg-laying behaviour by shiny cowbirds parasitizing brown-and-yellow marshbirds. Animal Behaviour 58:873-882.
- Mermoz, M. E., J. C. Rebores. 1994. Brood parasitism of the Shiny Cowbird, *Molothrus bonariensis*, on the Brown-and-yellow Marshbird, *Pseudoleistes virescens*. Condor 96: 716-721.
- Post, W., A. Cruz, and D.B. McNair. 1993. The North American invasion pattern of the Shiny Cowbird. Journal of Field Ornithology 64(1):32-41.
- Post, W., and J.W. Wiley. 1977. Reproductive interactions of the Shiny Cowbird and the Yellow-shouldered Blackbird. Condor 79:176-184.
- Post, W., and J.W. Wiley. 1977. The Shiny Cowbird in the West Indies. Condor 79:119-121.
- Post, W., T. K. Nakamura, and A. Cruz. 1990. Patterns of shiny cowbird parasitism in St. Lucia and southwestern Puerto Rico. Condor 92:461-469.
- Raffaele, H.A. 1983. A guide to the birds of Puerto Rico and the Virgin Islands. Fondo Educativo Interamericano, San Juan, Puerto Rico. 255 pp.
- Ridgely, R.S., and G. Tudor. 1989. The birds of South America. Vol. 1. The Oscine passerines. Univ. Texas Press, Austin. 516 pp.
- Robbins, C.S., J.W. Fitzpatrick, and P.B. Hamel. 1992. A warbler in trouble: DENDROICA CERULEA. Pages 549-562 in J.M. Hagan III and D.W. Johnston, editors. Ecology and conservation of neotropical migrant landbirds. Smithsonian Institution Press, Washington
- Stevenson, H. M., and B. H. Anderson. 1994. The birdlife of Florida. University Press of Florida, Gainesville. 892 pp.
- Wiley, J. W. 1985. Bird conservation in the United States Caribbean. Pages 107-159 in Temple, S. A., editor. Bird conservation 2. Univ. Wisconsin Press, Madison. 181 pp.
- Wiley, J. W. 1985. Shiny cowbird parasitism in two avian communities in Puerto Rico. Condor 87:165-176.
- Wiley, J. W. 1988. Host selection by the shiny cowbird. Condor 90:289-303.