



SOUTHEAST GAP ANALYSIS PROJECT



Species Modeling Report

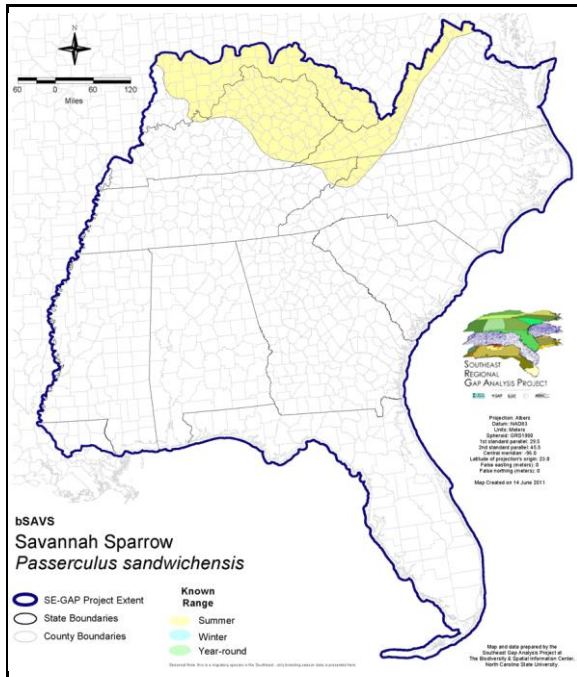
Savannah Sparrow

Passerculus sandwichensis

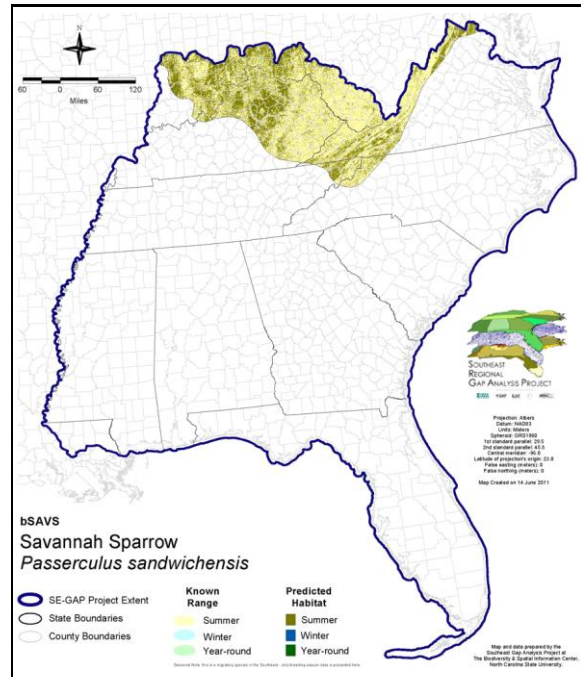
Taxa: Avian
 Order: Passeriformes
 Family: Emberizidae

SE-GAP Spp Code: **bSAVS**
 ITIS Species Code: 179314
 NatureServe Element Code: ABPBX99010

KNOWN RANGE:



PREDICTED HABITAT:



Range Map Link: http://www.basic.ncsu.edu/segap/datazip/maps/SE_Range_bSAVS.pdf

Predicted Habitat Map Link: http://www.basic.ncsu.edu/segap/datazip/maps/SE_Dist_bSAVS.pdf

GAP Online Tool Link: <http://www.gapservice.ncsu.edu/segap/segap/index2.php?species=bSAVS>

Data Download: http://www.basic.ncsu.edu/segap/datazip/region/vert/bSAVS_se00.zip

PROTECTION STATUS:

Reported on March 14, 2011

Federal Status: ---

State Status: CT (SC), CT (SC), ID (P), ID (P), KY (S), NC (SR), NJ (T/T), NV (YES), NY (PB), RI (Not Listed), UT (None), BC (4 (2005)), QC (Non suivie)

NS Global Rank: G5

NS State Rank: AK (S5B), AL (S5N), AR (S4N), AZ (S5), CA (S5), CO (S4B), CO (S4B), CT (S3B), CT (S3B), DC (S1S3N), DE (SNA), FL (SNRN), GA (S5), IA (S4B,S5N), ID (S5B), ID (S5B), IL (S5), IN (S4B), IN (S4B), KS (SNA), KY (S2S3B,S2S3N), LA (S5N), MA (S4B,S5M), MD (S3S4B,S4N), ME (S4S5N,S5B), MI (S5), MN (SNRB), MO (S4), MS (SNA), MT (S5B), MT (S5B), NC (S2B,S5N), ND (SNRB), NE (S3), NH (S5B), NJ (S2B,S4N), NM (S2B,S5N), NV (S5B), NY (S5), OH (S5), OK (S5), OR (S5), PA (S5B,S2S3N), RI (S2S3B), SC (SNRN), SD (S4B), SD (S4B), TN (S1B,S4N), TX (S4), UT (S5B,S3S4N), VA (S3S4B,S4N), VT (S5B), VT (S5B), WA (S4N,S5B), WI (S5B), WI (S5B), WV (S3N,S3B), WY (S5B,S5N), AB (S5), BC (S4S5B), LB (S4B), MB (S5B), MB (S5B), NB (S5B), NF (S5B), NS (S5B), NT (SNRB), NU (SNRB), ON (S4B), PE (S5B), QC (S4B), SK (S5B), YT (S5B)

SUMMARY OF PREDICTED HABITAT BY MANAGMENT AND GAP PROTECTION STATUS:

	US FWS		US Forest Service		Tenn. Valley Author.		US DOD/ACOE	
	ha	%	ha	%	ha	%	ha	%
Status 1	0.0	0	119.9	< 1	0.0	0	0.0	0
Status 2	0.0	0	1,824.4	< 1	0.0	0	0.0	0
Status 3	0.0	0	16,323.0	< 1	2,040.5	< 1	4,811.0	< 1
Status 4	5.2	< 1	0.0	0	0.0	0	0.0	0
Total	5.2	< 1	18,267.3	< 1	2,040.5	< 1	4,811.0	< 1
	US Dept. of Energy		US Nat. Park Service		NOAA		Other Federal Lands	
	ha	%	ha	%	ha	%	ha	%
Status 1	0.0	0	0.0	0	0.0	0	0.0	0
Status 2	0.0	0	1.1	< 1	0.0	0	0.0	0
Status 3	0.0	0	2,843.0	< 1	0.0	0	0.0	0
Status 4	0.0	0	0.0	0	0.0	0	0.0	0
Total	0.0	0	2,844.1	< 1	0.0	0	0.0	0
	Native Am. Reserv.		State Park/Hist. Park		State WMA/Gameland		State Forest	
	ha	%	ha	%	ha	%	ha	%
Status 1	0.0	0	0.0	0	0.0	0	0.0	0
Status 2	0.0	0	0.0	0	3,718.2	< 1	28.1	< 1
Status 3	0.0	0	2,247.0	< 1	2,646.4	< 1	113.9	< 1
Status 4	0.0	0	0.0	0	988.2	< 1	0.0	0
Total	0.0	0	2,247.0	< 1	7,352.7	< 1	142.0	< 1
	State Coastal Reserve		ST Nat.Area/Preserve		Other State Lands		Private Cons. Easemt.	
	ha	%	ha	%	ha	%	ha	%
Status 1	0.0	0	125.8	< 1	0.0	0	0.0	0
Status 2	0.0	0	284.2	< 1	0.0	0	0.0	0
Status 3	0.0	0	0.0	0	0.4	< 1	0.0	0
Status 4	0.0	0	0.0	0	53.9	< 1	0.0	0
Total	0.0	0	410.0	< 1	54.3	< 1	0.0	0
	Private Land - No Res.		Water		Overall Total			
	ha	%	ha	%	ha	%		
Status 1	0.0	0	0.0	0	245.7	< 1		
Status 2	0.0	0	0.0	0	5,855.9	< 1		
Status 3	0.0	0	0.0	0	31,025.3	2		
Status 4	2,834,590.9	98	1,091.3	< 1	2,837,712.4	98		
Total	2,834,590.9	98	1,091.3	< 1	2,874,839.3	100		

GAP Status 1: An area having permanent protection from conversion of natural land cover and a mandated management plan in operation to maintain a natural state within which disturbance events (of natural type, frequency, and intensity) are allowed to proceed without interference or are mimicked through management.

GAP Status 2: An area having permanent protection from conversion of natural land cover and a mandated management plan in operation to maintain a primarily natural state, but which may receive use or management practices that degrade the quality of existing natural communities.

GAP Status 3: An area having permanent protection from conversion of natural land cover for the majority of the area, but subject to extractive uses of either a broad, low-intensity type or localized intense type. It also confers protection to federally listed endangered and threatened species throughout the area.

GAP Status 4: Lack of irrevocable easement or mandate to prevent conversion of natural habitat types to anthropogenic habitat types. Allows for intensive use throughout the tract. Also includes those tracts for which the existence of such restrictions or sufficient information to establish a higher status is unknown.

PREDICTED HABITAT MODEL(S):

Summer Model:

Habitat Description: Breeding habitats include "grassy meadows, cultivated fields (especially alfalfa) lightly grazed pastures, roadsides, sedge bogs... Avoids areas with extensive tree cover, generally occurring in fields with some herbaceous plants or weeds." (Wheelwright and Rising 1993) M. Rubino, 11Jan05.

Mask of Forest Interior Avoidance: Exclude forest interiors with 60m buffer into them.

Selected Map Units:

Functional Group	Map Unit Name
Anthropogenic	Developed Open Space
Anthropogenic	Pasture/Hay
Anthropogenic	Row Crop
Anthropogenic	Successional Grassland/Herbaceous
Anthropogenic	Successional Grassland/Herbaceous (Other)
Anthropogenic	Successional Grassland/Herbaceous (Utility Swath)
Anthropogenic	Successional Shrub/Scrub (Clear Cut)
Anthropogenic	Successional Shrub/Scrub (Other)
Anthropogenic	Successional Shrub/Scrub (Utility Swath)
Prairie	Bluegrass Basin Savanna and Woodland
Prairie	Eastern Highland Rim Prairie and Barrens
Prairie	Eastern Highland Rim Prairie and Barrens - Dry Modifier
Prairie	Pennyroyal Karst Plain Prairie and Barrens
Prairie	Southern Ridge and Valley Patch Prairie
Wetlands	Central Interior Highlands and Appalachian Sinkhole and Depression Pond
Wetlands	North-Central Appalachian Seepage Fen
Wetlands	Southern and Central Appalachian Bog and Fen

- CITATIONS:** American Ornithologists' Union (AOU), Committee on Classification and Nomenclature. 1983. Check-list of North American Birds. Sixth Edition. American Ornithologists' Union, Allen Press, Inc., Lawrence, Kansas.
- Biosystems Analysis, Inc. 1989. Endangered Species Alert Program Manual:Species Accounts and Procedures. Southern California Edison Environmental Affairs Division.
- California Department of Fish and Game. 1990. 1989 annual report on the status of California's state listed threatened and endangered plants and animals. 188 pp.
- Dwight, J. 1895. The Ipswich sparrow. 56 pp.
- Godfrey, W.E. 1966. The birds of Canada. National Museums of Canada. Ottawa. 428 pp.
- Harrison, C. 1978. A field guide to the nests, eggs and nestlings of North American birds. Collins, Cleveland, Ohio.
- Harrison, H.H. 1975. A field guide to bird's nests in the U.S. east of the Mississippi River. Houghton Mifflin Company, Boston, Massachusetts. 257 p.
- Johnson, D.H., and L.D. Igl. 1995. Contributions of the Conservation Reserve Program to populations of breeding birds in North Dakota. Wilson Bulletin 107:709-718.
- Johnson, R.G., and S.A. Temple. 1990. Nest predation and brood parasitism of tallgrass prairie birds. Journal of Wildlife Management 54:106-111.
- Johnson, S.R., and D.R. Herter. 1989. The birds of the Beaufort Sea. BP Exploration (Alaska) Inc., Anchorage, Alaska. 372 pp.
- Knight, R.L. 1989. Second Tennessee breeding record of Savannah Sparrow, with comments on its expansion into the southern Appalachians. Migrant 60:69-71.
- National Geographic Society (NGS). 1983. Field guide to the birds of North America. National Geographic Society, Washington, D.C.
- Nicholson CP. 1997. Atlas of the breeding birds of Tennessee. Knoxville: University of Tennessee Press.
- Oberholser, H.C. 1974. The bird life of Texas. 2 vols. Univ. of Texas Press, Austin.
- Pearson, T.G. 1959. Birds of North Carolina. Raleigh, NC: Bynum Printing Company.

- Potter, E. F., J. F. Parnell, and R. P. Teulings. 1980. Birds of the Carolinas. Univ. North Carolina Press, Chapel Hill. 408 pp.
- Pylypec, B. 1991. Impacts of fire on bird populations in a fescue prairie. *Canadian Field-Naturalist* 105(3):346-349.
- Ridgway, R. 1901. The birds of North and Middle America. Part I. U.S. National Museum Bulletin 50.
- Rising, J. D. 1987. Geographic variation of sexual dimorphism in size of savannah sparrows: a test of hypotheses. *Evolution* 41:514-524.
- Stupka A 1963. Notes on the birds of the Great Smoky Mountains National Park. Knoxville: The University of Tennessee Press.
- Terres, J.K. 1980. The Audubon Society encyclopedia of North American birds. Alfred A. Knopf, New York.
- Wheelwright, N. T. and J. D. Rising. Savannah Sparrow. *The Birds of North America*. A. Poole, P. Stettenheim, and F. Gill ed. Philadelphia: The Academy of Natural Sciences; Washington, D.C.: The American Ornithologists Union; 1993; 1 (45).
- Williams, J. B. 1987. Field metabolism and food consumption of savannah sparrows during the breeding season. *Auk* 104:277-289.
- Zink, R. K., et al. 1991. Mitochondrial DNA variation and the taxonomic status of the large-billed savannah sparrow. *Condor* 93:1016-1019.

For more information:: SE-GAP Analysis Project / BaSIC
127 David Clark Labs
Dept. of Biology, NCSU
Raleigh, NC 27695-7617
(919) 513-2853
www.basic.ncsu.edu/segap

Compiled: 15 September 2011

This data was compiled and/or developed by the Southeast GAP Analysis Project at The Biodiversity and Spatial Information Center, North Carolina State University.