



# SOUTHEAST GAP ANALYSIS PROJECT



## Species Modeling Report

### Sandwich Tern

*Sterna sandvicensis*

Taxa: Avian

Order: Charadriiformes

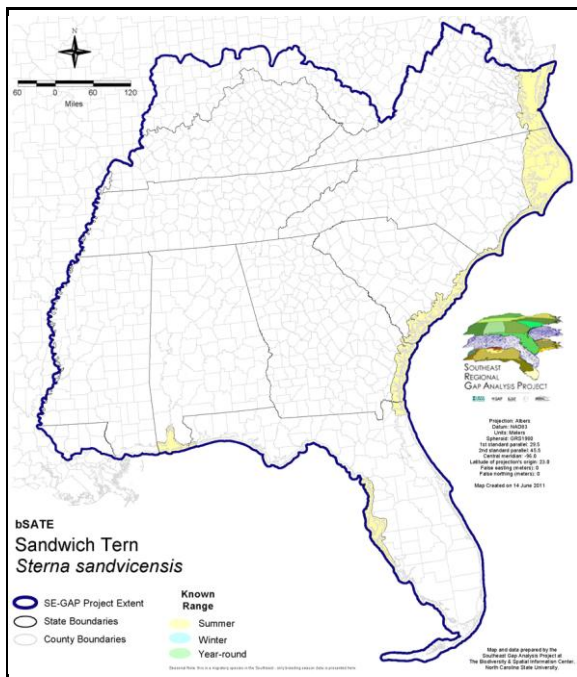
Family: Laridae

SE-GAP Spp Code: **bSATE**

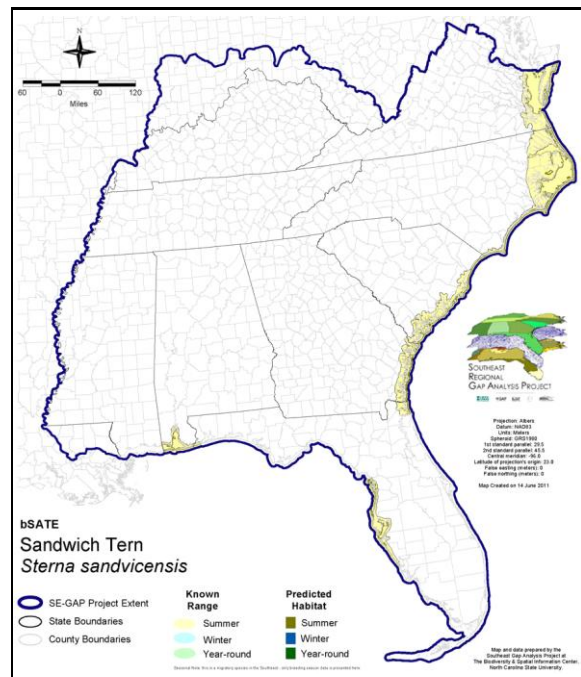
ITIS Species Code: 176927

NatureServe Element Code: ABNNM08050

#### KNOWN RANGE:



#### PREDICTED HABITAT:



Range Map Link: [http://www.basic.ncsu.edu/segap/datazip/maps/SE\\_Range\\_bSATE.pdf](http://www.basic.ncsu.edu/segap/datazip/maps/SE_Range_bSATE.pdf)

Predicted Habitat Map Link: [http://www.basic.ncsu.edu/segap/datazip/maps/SE\\_Dist\\_bSATE.pdf](http://www.basic.ncsu.edu/segap/datazip/maps/SE_Dist_bSATE.pdf)

GAP Online Tool Link: <http://www.gapservice.ncsu.edu/segap/segap/index2.php?species=bSATE>

Data Download: [http://www.basic.ncsu.edu/segap/datazip/region/vert/bSATE\\_se00.zip](http://www.basic.ncsu.edu/segap/datazip/region/vert/bSATE_se00.zip)

#### PROTECTION STATUS:

Reported on March 14, 2011

Federal Status: ---

State Status: NC (W2,W5), NC (W2,W5), NY (PB), VA (SC), VA (SC), QC (Non suivie)

NS Global Rank: G5

NS State Rank: AL (S1B,S5N), DE (SNA), FL (S2), GA (S4), LA (S4B), MA (S1N), MD (S1B), ME (SNA), MS (S1B,S4N), NC (S3B), NC (S3B), NJ (SNA), NY (SNA), SC (SNR), TX (S4B), VA (S1B), VA (S1B), NB (SNA), NF (SNA), ON (SNA), QC (SNA)

**SUMMARY OF PREDICTED HABITAT BY MANAGMENT AND GAP PROTECTION STATUS:**

	US FWS		US Forest Service		Tenn. Valley Author.		US DOD/ACOE	
	ha	%	ha	%	ha	%	ha	%
Status 1	35,317.9	8	0.0	0	0.0	0	0.0	0
Status 2	12,648.1	3	55.2	< 1	0.0	0	0.0	0
Status 3	615.3	< 1	333.8	< 1	0.0	0	9,673.6	2
Status 4	0.0	0	0.0	0	0.0	0	4.9	< 1
Total	48,581.3	11	389.0	< 1	0.0	0	9,678.4	2
	US Dept. of Energy		US Nat. Park Service		NOAA		Other Federal Lands	
	ha	%	ha	%	ha	%	ha	%
Status 1	0.0	0	286.8	< 1	890.7	< 1	0.0	0
Status 2	0.0	0	23,722.8	5	17,924.2	4	0.0	0
Status 3	0.0	0	1,366.9	< 1	0.0	0	0.0	0
Status 4	0.0	0	0.0	0	0.0	0	0.0	0
Total	0.0	0	25,376.6	6	18,815.0	4	0.0	0
	Native Am. Reserv.		State Park/Hist. Park		State WMA/Gameland		State Forest	
	ha	%	ha	%	ha	%	ha	%
Status 1	0.0	0	1.4	< 1	0.0	0	0.0	0
Status 2	0.0	0	0.0	0	22,948.4	5	0.0	0
Status 3	0.0	0	10,895.4	2	3,383.7	< 1	257.1	< 1
Status 4	0.0	0	0.0	0	400.6	< 1	0.0	0
Total	0.0	0	10,896.8	2	26,732.7	6	257.1	< 1
	State Coastal Reserve		ST Nat.Area/Preserve		Other State Lands		Private Cons. Easemt.	
	ha	%	ha	%	ha	%	ha	%
Status 1	0.0	0	348.5	< 1	0.0	0	0.0	0
Status 2	8,840.3	2	15,946.4	4	0.0	0	0.0	0
Status 3	0.0	0	0.0	0	0.0	0	0.0	0
Status 4	0.0	0	0.0	0	4.4	< 1	0.0	0
Total	8,840.3	2	16,294.9	4	4.4	< 1	0.0	0
	Private Land - No Res.		Water		Overall Total			
	ha	%	ha	%	ha	%		
Status 1	0.0	0	0.0	0	36,845.4 8			
Status 2	0.0	0	0.0	0	102,085.3 23			
Status 3	0.0	0	0.0	0	26,525.9 6			
Status 4	271,687.5	61	5,865.8	1	278,363.8 63			
Total	271,687.5	61	5,865.8	1	443,820.3 100			

GAP Status 1: An area having permanent protection from conversion of natural land cover and a mandated management plan in operation to maintain a natural state within which disturbance events (of natural type, frequency, and intensity) are allowed to proceed without interference or are mimicked through management.

GAP Status 2: An area having permanent protection from conversion of natural land cover and a mandated management plan in operation to maintain a primarily natural state, but which may receive use or management practices that degrade the quality of existing natural communities.

GAP Status 3: An area having permanent protection from conversion of natural land cover for the majority of the area, but subject to extractive uses of either a broad, low-intensity type or localized intense type. It also confers protection to federally listed endangered and threatened species throughout the area.

GAP Status 4: Lack of irrevocable easement or mandate to prevent conversion of natural habitat types to anthropogenic habitat types. Allows for intensive use throughout the tract. Also includes those tracts for which the existence of such restrictions or sufficient information to establish a higher status is unknown.

## PREDICTED HABITAT MODEL(S):

### Summer Model:

Habitat Description: Nests on low, sandy, flat islands close to shore; also on dredge-spoil islands in NC. In SC exclusively nests on barrier islands. Feeds primarily along coastal marine areas such as open ocean and bays, inlets and outflows; usually feeds within 2 km of shore (Shealer 1999). M. Rubino, 30dec04.

### Hydrography Mask:

Brackish/Saltwater Only

Utilizes open water features with buffers of unlimited from and 2000m into selected water features.

Utilizes wet vegetation features with buffer of unlimited into selected vegetation features.

### Selected Map Units:

Functional Group	Map Unit Name
Beach	Atlantic Coastal Plain Northern Sandy Beach
Beach	Atlantic Coastal Plain Sea Island Beach
Beach	Atlantic Coastal Plain Southern Beach
Beach	Florida Panhandle Beach Vegetation
Beach	South Florida Shell Hash Beach
Beach	Southeast Florida Beach
Beach	Southwest Florida Beach
Beach	Unconsolidated Shore (Beach/Dune)
Brackish Tidal Marsh & Wetland	Atlantic Coastal Plain Central Salt and Brackish Tidal Marsh
Brackish Tidal Marsh & Wetland	Atlantic Coastal Plain Embayed Region Tidal Salt and Brackish Marsh
Brackish Tidal Marsh & Wetland	Atlantic Coastal Plain Indian River Lagoon Tidal Marsh
Brackish Tidal Marsh & Wetland	Atlantic Coastal Plain Northern Tidal Salt Marsh
Brackish Tidal Marsh & Wetland	Florida Big Bend Salt-Brackish Tidal Marsh
Brackish Tidal Marsh & Wetland	Mississippi Sound Salt and Brackish Tidal Marsh
Brackish Tidal Marsh & Wetland	South Florida Everglades Sawgrass Marsh
Brackish Tidal Marsh & Wetland	Southwest Florida Perched Barriers Salt Swamp and Lagoon - Marsh Modifier
Coastal Dune & Freshwater Wetland	Atlantic and Gulf Coastal Plain Interdunal Wetland
Coastal Dune & Freshwater Wetland	Atlantic Coastal Plain Northern Dune and Maritime Grassland
Coastal Dune & Freshwater Wetland	Atlantic Coastal Plain Southern Dune and Maritime Grassland
Coastal Dune & Freshwater Wetland	East Gulf Coastal Plain Dune and Coastal Grassland
Coastal Dune & Freshwater Wetland	Southwest Florida Dune and Coastal Grassland
Water	Open Water (Brackish/Salt)

**CITATIONS:** American Ornithologists' Union (AOU), Committee on Classification and Nomenclature. 1983. Check-list of North American Birds. Sixth Edition. American Ornithologists' Union, Allen Press, Inc., Lawrence, Kansas.

Barcena, F., A. M. Teixeira, and Andres Bermejo. 1984. Breeding seabird populations in the Atlantic sector of the Iberian Peninsula. Pages 335-345 in Croxall et al., eds. Status and conservation of the world's seabirds. ICBP Tech. Pub. No. 2.

Bent, A.C. 1921. Life histories of North American gulls and terns. U.S. Natl. Mux. Bull. 113. Washington, D.C.

Buckley, P. A., and F. G. Buckley. 1984. Seabirds of the north and middle Atlantic coast of the United States: their status and conservation. Pages 101-133 in Croxall et al., eds. Status and conservation of the world's seabirds. ICBP Tech. Pub. No. 2.

Byrd, M.A., and D.W. Johnston. 1991. Birds. Pages 477-537 in K. Terwilliger, coordinator. Virginia's endangered species: proceedings of a symposium. McDonald and Woodward Publ. Co., Blacksburg, Virginia.

Clapp, R. B., and P. A. Buckley. 1984. Status and conservation of seabirds in the southeastern United States. Pages 135-155 in Croxall et al., eds. Status and conservation of the world's seabirds. ICBP Tech. Pub. No. 2.

Ehrlich, P.R., D.S. Dobkin, and D. Wheye. 1988. The birder's handbook: a field guide to the natural history of North American birds. Simon and Shuster, Inc., New York. xxx + 785 pp.

Evans, P. G. H. 1984. Status and conservation of seabirds in northwest Europe (excluding Norway and the USSR). Pages 293-321 in Croxall et al., eds. Status and conservation of the world's seabirds. ICBP Tech. Pub. No. 2.

Harrison, C. 1978. A field guide to the nests, eggs and nestlings of North American birds. Collins, Cleveland, Ohio.

James, P. C. 1984. The status and conservation of seabirds in the Mediterranean region. Pages 371-375 in Croxall et al., eds. Status and conservation of the world's seabirds. ICBP Tech. Pub. No. 2.

Kaufman K. 1996. Lives of North American Birds. Boston, New York: Houghton Mifflin Company.

Raffaele, H.A. 1983. A guide to the birds of Puerto Rico and the Virgin Islands. Fondo Educativo Interamericano, San Juan, Puerto Rico. 255 pp.

Shealer, D. 1999. Sandwich tern (*Sterna sandvicensis*). In A. Poole and F. Gill, eds., The Birds of North America, No. 405. The Academy of Natural Sciences, Philadelphia and The American Ornithologists' Union, Washington, DC.

Spendlow, J.A., and S.R. Patton. 1988. National atlas of coastal waterbird colonies in the contiguous United States:1976-1982. U.S. Fish and Wildlife Service, Biological Report 88(5). x + 326 pp.

Sprunt, A., IV. 1984. The status and conservation of seabirds of the Bahama Islands. Pages 157-168 in Croxall et al., eds. Status and conservation of the world's seabirds. ICBP Tech. Pub. No. 2.

Stiles, F.G., and A.F. Skutch. 1989. A guide to the birds of Costa Rica. Comstock Publ. Associates, Cornell University Press, Ithaca, New York. 511 pp.

Terres, J.K. 1980. The Audubon Society encyclopedia of North American birds. Alfred A. Knopf, New York.

van Halewyn, R., and R. L. Norton. 1984. The status and conservation of seabirds in the Caribbean. Pages 169-222 in Croxall et al., eds. Status and conservation of the world's seabirds. ICBP Tech. Pub. No. 2.

Wiley, J. W. 1985. Bird conservation in the United States Caribbean. Pages 107-159 in Temple, S. A., editor. Bird conservation 2. Univ. Wisconsin Press, Madison. 181 pp.

---

For more information:: SE-GAP Analysis Project / BaSIC  
127 David Clark Labs  
Dept. of Biology, NCSU  
Raleigh, NC 27695-7617  
(919) 513-2853  
[www.basic.ncsu.edu/segap](http://www.basic.ncsu.edu/segap)

Compiled: 15 September 2011

This data was compiled and/or developed  
by the Southeast GAP Analysis Project at  
The Biodiversity and Spatial Information  
Center, North Carolina State University.