



# SOUTHEAST GAP ANALYSIS PROJECT



## Species Modeling Report

### Ruby-throated Hummingbird

*Archilochus colubris*

Taxa: Avian

Order: Apodiformes

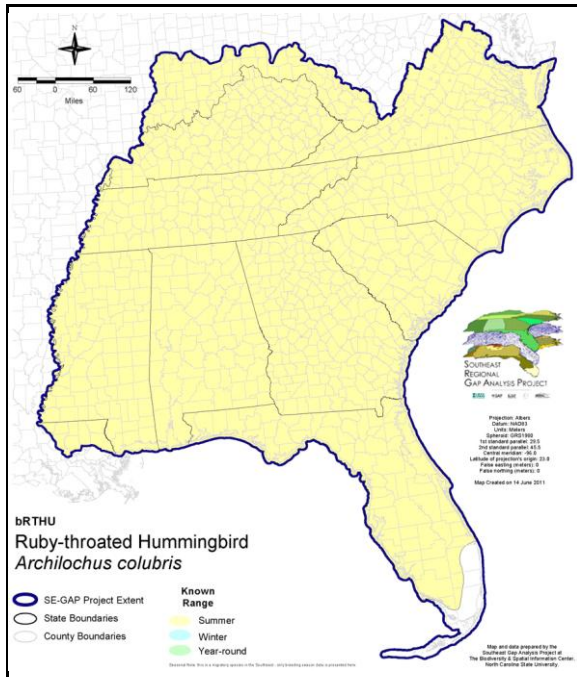
Family: Trochilidae

SE-GAP Spp Code: **bRTHU**

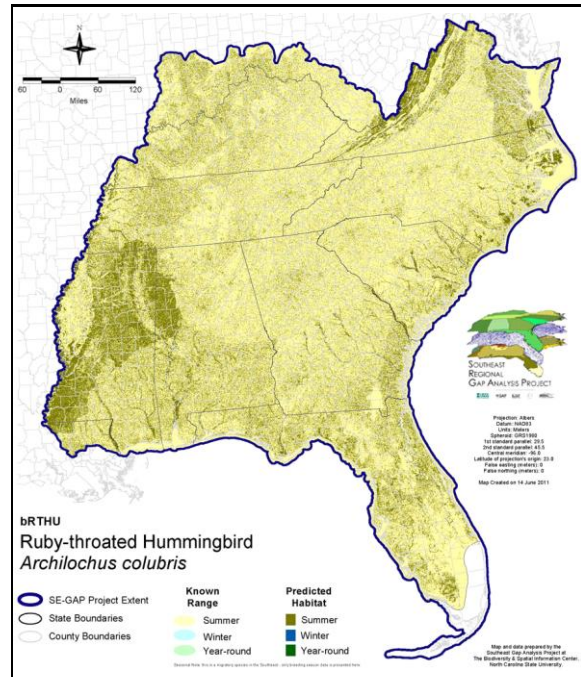
ITIS Species Code: 178032

NatureServe Element Code: ABNUC45010

#### KNOWN RANGE:



#### PREDICTED HABITAT:



Range Map Link: [http://www.basic.ncsu.edu/segap/datazip/maps/SE\\_Range\\_bRTHU.pdf](http://www.basic.ncsu.edu/segap/datazip/maps/SE_Range_bRTHU.pdf)

Predicted Habitat Map Link: [http://www.basic.ncsu.edu/segap/datazip/maps/SE\\_Dist\\_bRTHU.pdf](http://www.basic.ncsu.edu/segap/datazip/maps/SE_Dist_bRTHU.pdf)

GAP Online Tool Link: <http://www.gapservice.ncsu.edu/segap/segap/index2.php?species=bRTHU>

Data Download: [http://www.basic.ncsu.edu/segap/datazip/region/vert/bRTHU\\_se00.zip](http://www.basic.ncsu.edu/segap/datazip/region/vert/bRTHU_se00.zip)

#### PROTECTION STATUS:

Reported on March 14, 2011

Federal Status: ---

State Status: KY (N), NJ (D/S), NY (PB), RI (Not Listed), BC (8 (2005)), QC (Non suivie)

NS Global Rank: G5

NS State Rank: AK (SNA), AL (S5), AR (S5B), AZ (SNA), CT (S5B), CT (S5B), DC (S3B,S3N), DE (S5B), FL (SNRB,SNRN), GA (S5), IA (S4B,S5N), IL (S4S5), IN (S4B), KS (S4B), KS (S4B), KY (S5B), LA (S5B), MA (S5B), MD (S5B), ME (S5B), MI (S5), MN (SNRB), MO (SNRB), MS (S5B), MT (SNA), NC (S5B), NC (S5B), ND (SNRB), NE (S3), NH (S5B), NJ (S4B), NM (SNA), NY (S5), OH (S5), OK (S5B), PA (S5B), RI (S3B), SC (SNRB), SD (S2B), SD (S2B), TN (S5), TX (S4B), VA (S5), VT (S5B), VT (S5B), WA (SNA), WI (S4B), WI (S4B), WV (S5B), WY (SNA), AB (S5), BC (SNA), LB (SNA), MB (S5B), MB (S5B), NB (S5B), NF (S1B), NS (S5B), ON (S5B), PE (S5B), QC (S5B), SK (S5B,S4M)

**SUMMARY OF PREDICTED HABITAT BY MANAGMENT AND GAP PROTECTION STATUS:**

	US FWS		US Forest Service		Tenn. Valley Author.		US DOD/ACOE	
	ha	%	ha	%	ha	%	ha	%
Status 1	80,828.8	< 1	9,673.1	< 1	0.0	0	0.0	0
Status 2	188,088.1	< 1	197,627.4	< 1	0.0	0	2,198.3	< 1
Status 3	2,292.6	< 1	1,006,158.1	3	21,851.3	< 1	237,189.2	< 1
Status 4	63.5	< 1	< 0.1	< 1	0.0	0	128.3	< 1
Total	271,273.0	< 1	1,213,458.7	4	21,851.3	< 1	239,515.7	< 1
	US Dept. of Energy		US Nat. Park Service		NOAA		Other Federal Lands	
	ha	%	ha	%	ha	%	ha	%
Status 1	0.0	0	84,137.7	< 1	18.8	< 1	6,442.7	< 1
Status 2	0.0	0	5,987.1	< 1	3,528.3	< 1	7.2	< 1
Status 3	20,379.2	< 1	158,133.0	< 1	0.0	0	1,792.1	< 1
Status 4	0.0	0	0.0	0	0.0	0	0.0	0
Total	20,379.2	< 1	248,257.7	< 1	3,547.1	< 1	8,242.0	< 1
	Native Am. Reserv.		State Park/Hist. Park		State WMA/Gameland		State Forest	
	ha	%	ha	%	ha	%	ha	%
Status 1	0.0	0	491.0	< 1	49.0	< 1	0.0	0
Status 2	0.0	0	4,081.1	< 1	417,750.4	1	196.1	< 1
Status 3	9,508.5	< 1	329,148.0	1	132,438.5	< 1	144,083.4	< 1
Status 4	0.0	0	< 0.1	< 1	38,015.3	< 1	12.1	< 1
Total	9,508.5	< 1	333,720.2	1	588,253.1	2	144,291.6	< 1
	State Coastal Reserve		ST Nat.Area/Preserve		Other State Lands		Private Cons. Easemt.	
	ha	%	ha	%	ha	%	ha	%
Status 1	0.0	0	4,435.4	< 1	0.0	0	0.0	0
Status 2	11,359.1	< 1	54,131.9	< 1	4.2	< 1	1,559.1	< 1
Status 3	0.0	0	13,360.0	< 1	12,058.7	< 1	67,497.9	< 1
Status 4	0.0	0	0.6	< 1	1,318.9	< 1	0.0	0
Total	11,359.1	< 1	71,927.9	< 1	13,381.8	< 1	69,057.0	< 1
	Private Land - No Res.		Water		Overall Total			
	ha	%	ha	%	ha	%		
Status 1	0.0	0	0.0	0	186,076.4	< 1		
Status 2	0.0	0	0.0	0	886,518.3	3		
Status 3	493.8	< 1	< 0.1	< 1	2,156,384.3	11		
Status 4	24,765,521.6	85	40,160.5	< 1	24,883,172.7	85		
Total	24,766,015.4	85	40,160.6	< 1	28,112,151.7	100		

GAP Status 1: An area having permanent protection from conversion of natural land cover and a mandated management plan in operation to maintain a natural state within which disturbance events (of natural type, frequency, and intensity) are allowed to proceed without interference or are mimicked through management.

GAP Status 2: An area having permanent protection from conversion of natural land cover and a mandated management plan in operation to maintain a primarily natural state, but which may receive use or management practices that degrade the quality of existing natural communities.

GAP Status 3: An area having permanent protection from conversion of natural land cover for the majority of the area, but subject to extractive uses of either a broad, low-intensity type or localized intense type. It also confers protection to federally listed endangered and threatened species throughout the area.

GAP Status 4: Lack of irrevocable easement or mandate to prevent conversion of natural habitat types to anthropogenic habitat types. Allows for intensive use throughout the tract. Also includes those tracts for which the existence of such restrictions or sufficient information to establish a higher status is unknown.

**PREDICTED HABITAT MODEL(S):**

**Summer Model:**

Habitat Description: Ruby-throated humming birds are found near flowering plants (Johnsgard 1983) in areas such as the understory of mixed and deciduous forests, disturbed areas, early successional communities, woodland edges (Simpson 1992), residential areas, and bottomlands (Fussell 1994). They are most numerous in moist areas such as bottomland woods, but may also be found in upland forest, overgrown fields, and clearcuts (GA). They may be locally common where there are flowers such as honeysuckle or trumpetvine. They are also common on woodland edge, in second growth, parks, and open situations with scattered trees and forage insects and nectar in meadows and gardens (AOU 1983). Uncommon on the barrier islands of North Carolina (Fussell and Lyons 1990). Generally avoid coniferous woods (Hammel 1992).

The nest tree is generally located in an open area or above a stream. The nest is placed on a small limb that slants downward from the tree about 3-6m above the ground, and is always sheltered by overhanging limbs (Johnsgard 1983).

Quoted directly from existing state habitat notes - K. Cook, 17Feb05

note: Ruby-throats may breed in deciduous forest and mixed woodland not just in edge habitats.

**Selected Map Units:**

Functional Group	Map Unit Name
Anthropogenic	Low Intensity Developed
Anthropogenic	Successional Shrub/Scrub (Clear Cut)
Anthropogenic	Successional Shrub/Scrub (Other)
Anthropogenic	Successional Shrub/Scrub (Utility Swath)
Forest/Woodland	Alabama Ketona Glade and Woodland
Forest/Woodland	Atlantic Coastal Plain Mesic Hardwood and Mixed Forest
Forest/Woodland	East Gulf Coastal Plain Interior Shortleaf Pine-Oak Forest - Hardwood Modifier
Forest/Woodland	East Gulf Coastal Plain Interior Shortleaf Pine-Oak Forest - Mixed Modifier
Forest/Woodland	East Gulf Coastal Plain Limestone Forest
Forest/Woodland	East Gulf Coastal Plain Northern Loess Bluff Forest
Forest/Woodland	East Gulf Coastal Plain Northern Loess Plain Oak-Hickory Upland - Hardwood Modifier
Forest/Woodland	East Gulf Coastal Plain Northern Mesic Hardwood Forest
Forest/Woodland	East Gulf Coastal Plain Southern Loess Bluff Forest
Forest/Woodland	East Gulf Coastal Plain Southern Mesic Slope Forest
Forest/Woodland	Northeastern Interior Dry Oak Forest-Hardwood Modifier
Forest/Woodland	South Florida Pine Rockland
Forest/Woodland	South-Central Interior Mesophytic Forest
Forest/Woodland	Southern and Central Appalachian Cove Forest
Forest/Woodland	Southern Coastal Plain Oak Dome and Hammock
Forest/Woodland	Southern Piedmont Mesic Forest
Forest/Woodland	Southern Piedmont Northern Triassic Basin Dry Forest
Wetlands	Atlantic Coastal Plain Blackwater Stream Floodplain Forest - Forest Modifier
Wetlands	Atlantic Coastal Plain Brownwater Stream Floodplain Forest
Wetlands	Atlantic Coastal Plain Clay-Based Carolina Bay Forested Wetland
Wetlands	Atlantic Coastal Plain Clay-Based Carolina Bay Herbaceous Wetland
Wetlands	Atlantic Coastal Plain Nonriverine Swamp and Wet Hardwood Forest - Taxodium/Nyssa Modifier
Wetlands	Atlantic Coastal Plain Nonriverine Swamp and Wet Hardwood Forest - Oak Dominated Modifier
Wetlands	Atlantic Coastal Plain Northern Basin Peat Swamp
Wetlands	Atlantic Coastal Plain Northern Basin Swamp and Wet Hardwood Forest
Wetlands	Atlantic Coastal Plain Peatland Pocosin
Wetlands	Atlantic Coastal Plain Small Blackwater River Floodplain Forest
Wetlands	Atlantic Coastal Plain Small Brownwater River Floodplain Forest
Wetlands	Atlantic Coastal Plain Streamhead Seepage Swamp, Pocosin, and Baygall
Wetlands	Atlantic Coastal Plain Xeric River Dune
Wetlands	Central Appalachian Floodplain - Forest Modifier

Wetlands	Central Appalachian Riparian - Forest Modifier
Wetlands	Central Interior Highlands and Appalachian Sinkhole and Depression Pond
Wetlands	East Gulf Coastal Plain Interior Shrub Bog
Wetlands	East Gulf Coastal Plain Large River Floodplain Forest - Forest Modifier
Wetlands	East Gulf Coastal Plain Northern Seepage Swamp
Wetlands	East Gulf Coastal Plain Small Stream and River Floodplain Forest
Wetlands	East Gulf Coastal Plain Southern Loblolly-Hardwood Flatwoods
Wetlands	Lower Mississippi River Bottomland and Floodplain Forest
Wetlands	Lower Mississippi River Bottomland Depressions - Forest Modifier
Wetlands	Mississippi River Low Floodplain (Bottomland) Forest
Wetlands	Mississippi River Riparian Forest
Wetlands	North-Central Appalachian Acidic Swamp
Wetlands	North-Central Appalachian Seepage Fen
Wetlands	North-Central Interior and Appalachian Rich Swamp
Wetlands	South Florida Bayhead Swamp
Wetlands	South Florida Cypress Dome
Wetlands	South Florida Hardwood Hammock
Wetlands	South Florida Willow Head
Wetlands	South-Central Interior Large Floodplain - Forest Modifier
Wetlands	South-Central Interior Small Stream and Riparian
Wetlands	South-Central Interior/Upper Coastal Plain Wet Flatwoods
Wetlands	Southern and Central Appalachian Bog and Fen
Wetlands	Southern Coastal Plain Blackwater River Floodplain Forest
Wetlands	Southern Coastal Plain Hydric Hammock
Wetlands	Southern Coastal Plain Nonriverine Basin Swamp
Wetlands	Southern Coastal Plain Nonriverine Cypress Dome
Wetlands	Southern Coastal Plain Seepage Swamp and Baygall
Wetlands	Southern Piedmont Large Floodplain Forest - Forest Modifier
Wetlands	Southern Piedmont Seepage Wetland
Wetlands	Southern Piedmont Small Floodplain and Riparian Forest
Wetlands	Southern Piedmont/Ridge and Valley Upland Depression Swamp
Wetlands	Western Highland Rim Seepage Fen

**CITATIONS:** American Ornithologists' Union (AOU), Committee on Classification and Nomenclature. 1983. Check-list of North American Birds. Sixth Edition. American Ornithologists' Union, Allen Press, Inc., Lawrence, Kansas.

Bent, A. C. 1940. Life histories of North American cuckoos, goatsuckers, hummingbirds, and their allies. Part I. U.S. Nat. Mus. Bull. 176. 244 pp., 36 pls.

Bleiweiss, R., J. A. W. Kirsch, and J. C. Matheus. 1994. DNA-DNA hybridization evidence for subfamily structure among hummingbirds. *Auk* 111:8-19.

Ehrlich, P.R., D.S. Dobkin, and D. Wheye. 1992. *Birds in jeopardy: the imperiled and extinct birds of the United States and Canada, including Hawaii and Puerto Rico*. Stanford University Press, Stanford, California. 259 pp.

Fussell, J. III and M. Lyons. 1990. *Birds of the Outer Banks* [pamphlet]. Eastern National Parks and Monument Association Coastal Wildlife Refuge Society.

Fussell, J.O. III. 1994. *A birder's guide to coastal North Carolina*. Chapel Hill and London: The University of North Carolina Press.

Hagan, J.M., III, and D.W. Johnston, editors. 1992. *Ecology and conservation of neotropical migrant landbirds*. Smithsonian Institution Press, Washington, D.C. xiii + 609 pp.

Hamel, P. B. 1992. *The land manager's guide to the birds of the south*. The Nature Conservancy, Chapel Hill, North Carolina. 367 pp + several appendices.

Harrison, C. 1978. *A field guide to the nests, eggs and nestlings of North American birds*. Collins, Cleveland, Ohio.

Harrison, H.H. 1979. *A field guide to western birds' nests*. Houghton Mifflin Company, Boston. 279 pp.

Johnsgard, P.A. 1983. *Hummingbirds of North America*. Smithsonian Institution Press, Washington, D.C. 304 pp.

Potter, E. F., J. F. Parnell, and R. P. Teulings. 1980. *Birds of the Carolinas*. Univ. North Carolina Press, Chapel Hill. 408 pp.

- Sauer, J.R., and S. Droege. 1992. Geographical patterns in population trends of neotropical migrants in North America. Pages 26-42 in J.M. Hagan III and D.W. Johnston, editors. Ecology and conservation of neotropical migrant landbirds. Smithsonian Institution Press.
- Simpson MB Jr. 1992. Birds of the Blue Ridge Mountains. Chapel Hill and London: University of North Carolina Press.
- Stiles, F.G., and A.F. Skutch. 1989. A guide to the birds of Costa Rica. Comstock Publ. Associates, Cornell University Press, Ithaca, New York. 511 pp.
- Terres, J.K. 1980. The Audubon Society encyclopedia of North American birds. Alfred A. Knopf, New York.

---

For more information:: SE-GAP Analysis Project / BaSIC  
127 David Clark Labs  
Dept. of Biology, NCSU  
Raleigh, NC 27695-7617  
(919) 513-2853  
[www.basic.ncsu.edu/segap](http://www.basic.ncsu.edu/segap)

Compiled: 15 September 2011

This data was compiled and/or developed  
by the Southeast GAP Analysis Project at  
The Biodiversity and Spatial Information  
Center, North Carolina State University.