



SOUTHEAST GAP ANALYSIS PROJECT



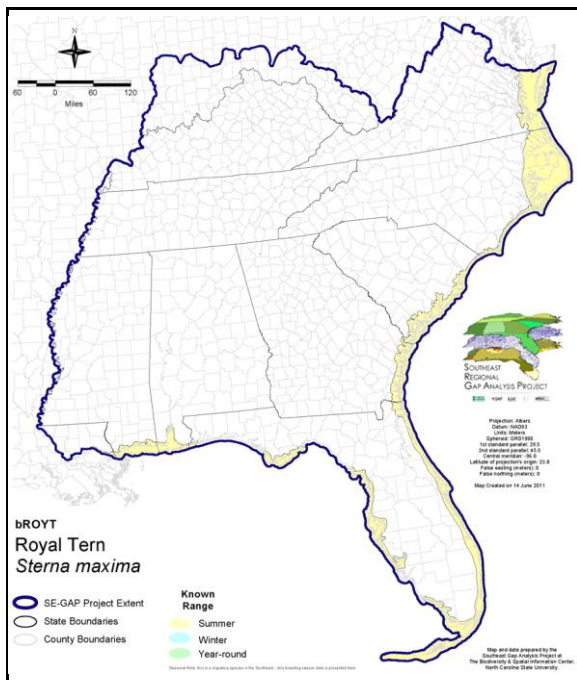
Species Modeling Report

Royal Tern *Sterna maxima*

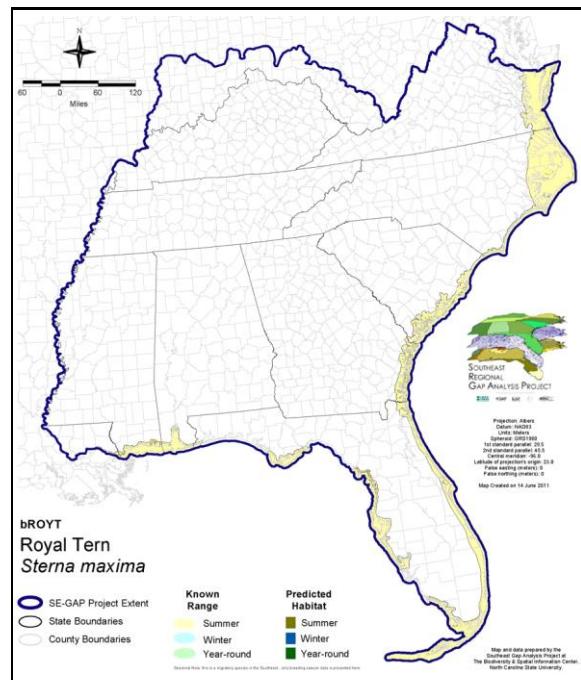
Taxa: Avian
Order: Charadriiformes
Family: Laridae

SE-GAP Spp Code: **bROYT**
ITIS Species Code: 176922
NatureServe Element Code: ABNNM08030

KNOWN RANGE:



PREDICTED HABITAT:



Range Map Link: http://www.basic.ncsu.edu/segap/datazip/maps/SE_Range_bROYT.pdf

Predicted Habitat Map Link: http://www.basic.ncsu.edu/segap/datazip/maps/SE_Dist_bROYT.pdf

GAP Online Tool Link: <http://www.gapservice.ncsu.edu/segap/segap/index2.php?species=bROYT>

Data Download: http://www.basic.ncsu.edu/segap/datazip/region/vert/bROYT_se00.zip

PROTECTION STATUS:

Reported on March 14, 2011

Federal Status: ---

State Status: MD (E), NJ (S), NY (PB), RI (Not Listed), QC (Non suivie)

NS Global Rank: G5

NS State Rank: AL (S1B,S5N), AR (SNA), AZ (SNA), CA (SNRN), CT (SNA), DE (SNA), FL (S3), GA (S5), IL (SNA), IN (SNA), LA (S5), MA (S1N), MD (S1B), ME (SNA), MS (S1B,S4N), NC (S4B,S4N), NJ (S4B,S4N), NM (SNR), NY (SNRN), PA (SNA), RI (S1N), SC (SNRB,SNRN), TX (S4B), VA (S2B), VA (S2B), WI (SNA), MB (SNA), NB (SNA), NF (SNA), NS (SNA), ON (SNA), PE (SNA), QC (SNA)

SUMMARY OF PREDICTED HABITAT BY MANAGMENT AND GAP PROTECTION STATUS:

	US FWS		US Forest Service		Tenn. Valley Author.		US DOD/ACOE	
	ha	%	ha	%	ha	%	ha	%
Status 1	38,003.0	7	0.0	0	0.0	0	0.0	0
Status 2	15,217.7	3	55.2	< 1	0.0	0	0.0	0
Status 3	612.2	< 1	333.8	< 1	0.0	0	10,172.5	2
Status 4	0.0	0	0.0	0	0.0	0	4.9	< 1
Total	53,833.0	10	389.0	< 1	0.0	0	10,177.4	2
	US Dept. of Energy		US Nat. Park Service		NOAA		Other Federal Lands	
	ha	%	ha	%	ha	%	ha	%
Status 1	0.0	0	4,661.5	< 1	890.7	< 1	3,620.3	< 1
Status 2	0.0	0	27,197.6	5	21,195.0	4	0.0	0
Status 3	0.0	0	1,366.9	< 1	0.0	0	0.0	0
Status 4	0.0	0	2.0	0	0.0	0	0.0	0
Total	0.0	0	33,228.0	6	22,085.7	4	3,620.3	< 1
	Native Am. Reserv.		State Park/Hist. Park		State WMA/Gameland		State Forest	
	ha	%	ha	%	ha	%	ha	%
Status 1	0.0	0	1.4	< 1	0.0	0	0.0	0
Status 2	0.0	0	45.5	< 1	24,356.9	5	0.0	0
Status 3	0.0	0	22,494.6	4	3,383.7	< 1	1,223.8	< 1
Status 4	0.0	0	0.0	0	400.6	< 1	0.0	0
Total	0.0	0	22,541.5	4	28,141.2	5	1,223.8	< 1
	State Coastal Reserve		ST Nat.Area/Preserve		Other State Lands		Private Cons. Easemt.	
	ha	%	ha	%	ha	%	ha	%
Status 1	0.0	0	348.5	< 1	0.0	0	0.0	0
Status 2	21,210.0	4	16,121.3	3	0.0	0	0.0	0
Status 3	0.0	0	619.5	< 1	0.0	0	259.8	< 1
Status 4	0.0	0	0.0	0	4.4	< 1	0.0	0
Total	21,210.0	4	17,089.2	3	4.4	< 1	259.8	< 1
	Private Land - No Res.		Water		Overall Total			
	ha	%	ha	%	ha	%	ha	%
Status 1	0.0	3	0.0	0	47,525.6 9			
Status 2	0.8	< 1	0.0	3	125,400.1 24			
Status 3	96.1	< 1	0.0	0	40,563.0 8			
Status 4	299,331.9	57	9,173.7	2	309,318.1 59			
Total	299,429.0	57	9,173.9	2	522,806.8 100			

GAP Status 1: An area having permanent protection from conversion of natural land cover and a mandated management plan in operation to maintain a natural state within which disturbance events (of natural type, frequency, and intensity) are allowed to proceed without interference or are mimicked through management.

GAP Status 2: An area having permanent protection from conversion of natural land cover and a mandated management plan in operation to maintain a primarily natural state, but which may receive use or management practices that degrade the quality of existing natural communities.

GAP Status 3: An area having permanent protection from conversion of natural land cover for the majority of the area, but subject to extractive uses of either a broad, low-intensity type or localized intense type. It also confers protection to federally listed endangered and threatened species throughout the area.

GAP Status 4: Lack of irrevocable easement or mandate to prevent conversion of natural habitat types to anthropogenic habitat types. Allows for intensive use throughout the tract. Also includes those tracts for which the existence of such restrictions or sufficient information to establish a higher status is unknown.

PREDICTED HABITAT MODEL(S):

Summer Model:

Habitat Description: Nearly obligate warm water, ocean-coast/ marine species at all times of the year. Movements strictly coastwise and tied to salt water except for occasional foraging along creeks and rivers leading from back bays and lagoons. Forage close inshore usually in breaking-wave surf zone, over open ocean up to 100m from shore, and at inlets and back bays (Buckley and Buckley 2002). Fishes well out from shore beyond breakers (Stiles and Skutch 1989). M. Rubino, 30dec04.

Hydrography Mask:

Brackish/Saltwater Only

Utilizes open water features with buffers of unlimited from and 250m into selected water features.

Utilizes wet vegetation features with buffer of unlimited into selected vegetation features.

Selected Map Units:

Functional Group	Map Unit Name
Beach	Atlantic Coastal Plain Northern Sandy Beach
Beach	Atlantic Coastal Plain Sea Island Beach
Beach	Atlantic Coastal Plain Southern Beach
Beach	Florida Panhandle Beach Vegetation
Beach	South Florida Shell Hash Beach
Beach	Southeast Florida Beach
Beach	Southwest Florida Beach
Beach	Unconsolidated Shore (Beach/Dune)
Brackish Tidal Marsh & Wetland	Atlantic Coastal Plain Central Salt and Brackish Tidal Marsh
Brackish Tidal Marsh & Wetland	Atlantic Coastal Plain Embayed Region Tidal Salt and Brackish Marsh
Brackish Tidal Marsh & Wetland	Atlantic Coastal Plain Indian River Lagoon Tidal Marsh
Brackish Tidal Marsh & Wetland	Atlantic Coastal Plain Northern Tidal Salt Marsh
Brackish Tidal Marsh & Wetland	Florida Big Bend Salt-Brackish Tidal Marsh
Brackish Tidal Marsh & Wetland	Mississippi Sound Salt and Brackish Tidal Marsh
Brackish Tidal Marsh & Wetland	South Florida Everglades Sawgrass Marsh
Brackish Tidal Marsh & Wetland	Southwest Florida Perched Barriers Salt Swamp and Lagoon - Marsh Modifier
Coastal Dune & Freshwater Wetland	Atlantic and Gulf Coastal Plain Interdunal Wetland
Coastal Dune & Freshwater Wetland	Atlantic Coastal Plain Northern Dune and Maritime Grassland
Coastal Dune & Freshwater Wetland	Atlantic Coastal Plain Southern Dune and Maritime Grassland
Coastal Dune & Freshwater Wetland	East Gulf Coastal Plain Dune and Coastal Grassland
Coastal Dune & Freshwater Wetland	Southwest Florida Dune and Coastal Grassland
Water	Open Water (Brackish/Salt)

CITATIONS: American Ornithologists' Union (AOU), Committee on Classification and Nomenclature. 1983. Check-list of North American Birds. Sixth Edition. American Ornithologists' Union, Allen Press, Inc., Lawrence, Kansas.

Bent, A.C. 1921. Life histories of North American gulls and terns. U.S. Natl. Mux. Bull. 113. Washington, D.C.

Buckley, P. A., and F. G. Buckley. 1984. Seabirds of the north and middle Atlantic coast of the United States: their status and conservation. Pages 101-133 in Croxall et al., eds. Status and conservation of the world's seabirds. ICBP Tech. Pub. No. 2.

Buckley, P. A., and F. G. Buckley. 2002. Royal Tern (*Sterna maxima*). In The Birds of North America, No. 700 (A. Poole and F. Gill, eds.). The Birds of North America, Inc., Philadelphia, PA.

Clapp, R. B., and P. A. Buckley. 1984. Status and conservation of seabirds in the southeastern United States. Pages 135-155 in Croxall et al., eds. Status and conservation of the world's seabirds. ICBP Tech. Pub. No. 2.

Cooper, J., A. J. Williams, and P. L. Britton. 1984. Distribution, population sizes and conservation of breeding seabirds in the Afrotropical region. Pages 403-419 in Croxall et al., eds. Status and conservation of the world's seabirds. ICBP Tech. Pub. No.

Ehrlich, P.R., D.S. Dobkin, and D. Wheye. 1988. The birder's handbook: a field guide to the natural history of North American birds. Simon and Shuster, Inc., New York. xxx + 785 pp.

Harrison, C. 1978. A field guide to the nests, eggs and nestlings of North American birds. Collins, Cleveland, Ohio.

Hilty, S.L., and W.L. Brown. 1986. A guide to the birds of Colombia. Princeton University Press, Princeton, New Jersey. 836 pp.

National Geographic Society (NGS). 1983. Field guide to the birds of North America. National Geographic Society, Washington, D.C.

Raffaele, H.A. 1983. A guide to the birds of Puerto Rico and the Virgin Islands. Fondo Educativo Interamericano, San Juan, Puerto Rico. 255 pp.

Spendlow, J.A., and S.R. Patton. 1988. National atlas of coastal waterbird colonies in the contiguous United States:1976-1982. U.S. Fish and Wildlife Service, Biological Report 88(5). x + 326 pp.

Sprunt, A., IV. 1984. The status and conservation of seabirds of the Bahama Islands. Pages 157-168 in Croxall et al., eds. Status and conservation of the world's seabirds. ICBP Tech. Pub. No. 2.

Stiles, F.G., and A.F. Skutch. 1989. A guide to the birds of Costa Rica. Comstock Publ. Associates, Cornell University Press, Ithaca, New York. 511 pp.

Terres, J.K. 1980. The Audubon Society encyclopedia of North American birds. Alfred A. Knopf, New York.

van Halewyn, R., and R. L. Norton. 1984. The status and conservation of seabirds in the Caribbean. Pages 169-222 in Croxall et al., eds. Status and conservation of the world's seabirds. ICBP Tech. Pub. No. 2.

Wiley, J. W. 1985. Bird conservation in the United States Caribbean. Pages 107-159 in Temple, S. A., editor. Bird conservation 2. Univ. Wisconsin Press, Madison. 181 pp.

For more information:: SE-GAP Analysis Project / BaSIC
127 David Clark Labs
Dept. of Biology, NCSU
Raleigh, NC 27695-7617
(919) 513-2853
www.basic.ncsu.edu/segap

Compiled: 15 September 2011

This data was compiled and/or developed
by the Southeast GAP Analysis Project at
The Biodiversity and Spatial Information
Center, North Carolina State University.