



SOUTHEAST GAP ANALYSIS PROJECT



Species Modeling Report

Roseate Spoonbill

Platalea ajaja

Taxa: Avian

Order: Ciconiiformes

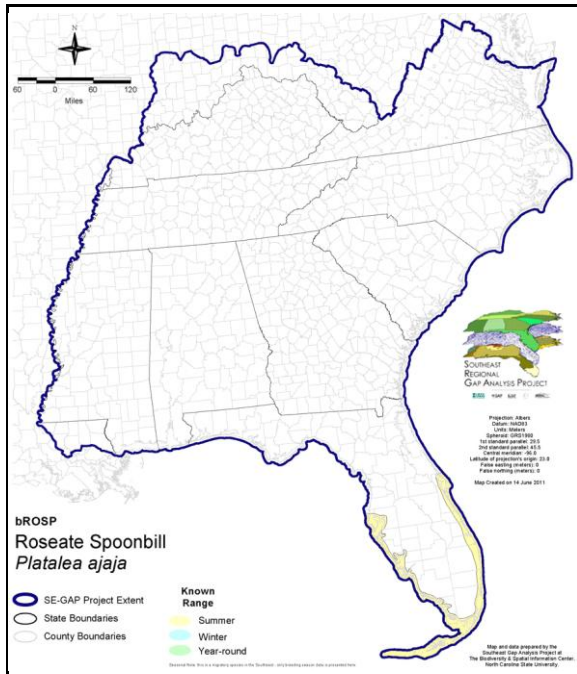
Family: Threskiornithidae

SE-GAP Spp Code: **bROSP**

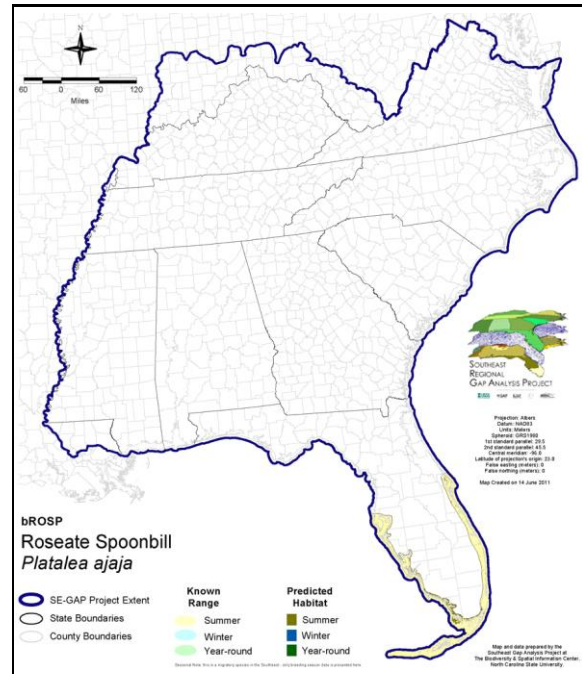
ITIS Species Code: 174940

NatureServe Element Code: ABNGE05010

KNOWN RANGE:



PREDICTED HABITAT:



Range Map Link: http://www.basic.ncsu.edu/segap/datazip/maps/SE_Range_bROSP.pdf

Predicted Habitat Map Link: http://www.basic.ncsu.edu/segap/datazip/maps/SE_Dist_bROSP.pdf

GAP Online Tool Link: <http://www.gapservice.ncsu.edu/segap/segap/index2.php?species=bROSP>

Data Download: http://www.basic.ncsu.edu/segap/datazip/region/vert/bROSP_se00.zip

PROTECTION STATUS:

Reported on March 14, 2011

Federal Status: ---

State Status: FL (SSC), KY (N), NV (YES), UT (None)

NS Global Rank: G5

NS State Rank: AL (SNR), AR (SNA), AZ (SNA), CA (SNA), CO (SNA), FL (S2), GA (SNA), IL (SX), IN (SNA), KS (SNA), KY (SNA), LA (S3), MD (SNA), MS (S1B,S2N), NC (SNA), NM (SNA), NV (SNA), OK (SNA), PA (SNA), TX (S4B), UT (SNA), WI (SNA), NS (SNA)

SUMMARY OF PREDICTED HABITAT BY MANAGMENT AND GAP PROTECTION STATUS:

| | US FWS | | US Forest Service | | Tenn. Valley Author. | | US DOD/ACOE | |
|----------|------------------------|-----|-----------------------|-----|----------------------|-----|-----------------------|-----|
| | ha | % | ha | % | ha | % | ha | % |
| Status 1 | 8,586.9 | 4 | 0.0 | 0 | 0.0 | 0 | 0.0 | 0 |
| Status 2 | 0.0 | 0 | 0.0 | 0 | 0.0 | 0 | 0.0 | 0 |
| Status 3 | 0.0 | 0 | 0.0 | 0 | 0.0 | 0 | 839.3 | < 1 |
| Status 4 | 0.0 | 0 | 0.0 | 0 | 0.0 | 0 | 0.0 | 0 |
| Total | 8,586.9 | 4 | 0.0 | 0 | 0.0 | 0 | 839.3 | < 1 |
| | US Dept. of Energy | | US Nat. Park Service | | NOAA | | Other Federal Lands | |
| | ha | % | ha | % | ha | % | ha | % |
| Status 1 | 0.0 | 0 | 92,470.7 | 46 | 0.0 | 0 | 4,512.2 | 2 |
| Status 2 | 0.0 | 0 | 910.9 | < 1 | 8,996.8 | 4 | < 0.1 | < 1 |
| Status 3 | 0.0 | 0 | 0.0 | 0 | 0.0 | 0 | 0.0 | 0 |
| Status 4 | 0.0 | 0 | 0.0 | 0 | 0.0 | 0 | 0.0 | 0 |
| Total | 0.0 | 0 | 93,381.6 | 47 | 8,996.8 | 4 | 4,512.2 | 2 |
| | Native Am. Reserv. | | State Park/Hist. Park | | State WMA/Gameland | | State Forest | |
| | ha | % | ha | % | ha | % | ha | % |
| Status 1 | 0.0 | 0 | 0.0 | 0 | 0.0 | 0 | 0.0 | 0 |
| Status 2 | 0.0 | 0 | 0.0 | 0 | 254.5 | < 1 | 0.0 | 0 |
| Status 3 | 0.0 | 0 | 19,500.4 | 10 | 0.0 | 0 | 28.1 | < 1 |
| Status 4 | 0.0 | 0 | 0.0 | 0 | 0.0 | 0 | 0.0 | 0 |
| Total | 0.0 | 0 | 19,500.4 | 10 | 254.5 | < 1 | 28.1 | < 1 |
| | State Coastal Reserve | | ST Nat.Area/Preserve | | Other State Lands | | Private Cons. Easemt. | |
| | ha | % | ha | % | ha | % | ha | % |
| Status 1 | 0.0 | 0 | 0.0 | 0 | 0.0 | 0 | 0.0 | 0 |
| Status 2 | 0.0 | 0 | 0.0 | 0 | 0.0 | 0 | 0.0 | 0 |
| Status 3 | 0.0 | 0 | 0.0 | 0 | 0.0 | 0 | 0.0 | 0 |
| Status 4 | 0.0 | 0 | 0.0 | 0 | 0.0 | 0 | 0.0 | 0 |
| Total | 0.0 | 0 | 0.0 | 0 | 0.0 | 0 | 0.0 | 0 |
| | Private Land - No Res. | | Water | | Overall Total | | | |
| | ha | % | ha | % | ha | % | ha | % |
| Status 1 | 0.0 | 0 | 0.0 | 0 | 105,569.7 53 | | | |
| Status 2 | 0.0 | 0 | 0.0 | 0 | 10,162.3 5 | | | |
| Status 3 | < 0.1 | < 1 | 0.0 | 0 | 20,367.8 10 | | | |
| Status 4 | 47,620.5 | 24 | 16,217.6 | 8 | 63,838.1 32 | | | |
| Total | 47,620.6 | 24 | 16,217.6 | 8 | 199,937.9 100 | | | |

GAP Status 1: An area having permanent protection from conversion of natural land cover and a mandated management plan in operation to maintain a natural state within which disturbance events (of natural type, frequency, and intensity) are allowed to proceed without interference or are mimicked through management.

GAP Status 2: An area having permanent protection from conversion of natural land cover and a mandated management plan in operation to maintain a primarily natural state, but which may receive use or management practices that degrade the quality of existing natural communities.

GAP Status 3: An area having permanent protection from conversion of natural land cover for the majority of the area, but subject to extractive uses of either a broad, low-intensity type or localized intense type. It also confers protection to federally listed endangered and threatened species throughout the area.

GAP Status 4: Lack of irrevocable easement or mandate to prevent conversion of natural habitat types to anthropogenic habitat types. Allows for intensive use throughout the tract. Also includes those tracts for which the existence of such restrictions or sufficient information to establish a higher status is unknown.

PREDICTED HABITAT MODEL(S):

Summer Model:

Habitat Description: Breeds in a variety of marine, brackish and freshwater habitats. Along coast, in bays, inlets estuaries, mangroves, marshes, and beaches; inland, in marshes, forested swamps, rivers, lakes, and wet prairies. Nests primarily on island or over standing water in trees and shrubs. Feeds in shallow water in variety of hypersaline, marine, brackish, and freshwater habitats on coast and inland, including coastal bays, estuaries, lagoons, sea grass meadows, marsh, wet prairies (Everglades), swamps (including mangroves), canals tidal mudflats, tidal pools, sloughs, lakes, ponds etc.. (Dumas 2000) M. Rubino, 21dec04.

Hydrography Mask:

Utilizes flowing water features with buffers of 500m from and 30m into selected water features.

Utilizes open water features with buffers of 500m from and 30m into selected water features.

Selected Map Units:

| Functional Group | Map Unit Name |
|-----------------------------------|--|
| Beach | South Florida Shell Hash Beach |
| Beach | Southeast Florida Beach |
| Beach | Southwest Florida Beach |
| Beach | Unconsolidated Shore (Beach/Dune) |
| Brackish Tidal Marsh & Wetland | Atlantic Coastal Plain Indian River Lagoon Tidal Marsh |
| Brackish Tidal Marsh & Wetland | Atlantic Coastal Plain Southern Tidal Wooded Swamp |
| Brackish Tidal Marsh & Wetland | Florida Big Bend Salt-Brackish Tidal Marsh |
| Brackish Tidal Marsh & Wetland | South Florida Everglades Sawgrass Marsh |
| Brackish Tidal Marsh & Wetland | South Florida Mangrove Swamp |
| Brackish Tidal Marsh & Wetland | Southwest Florida Perched Barriers Salt Swamp and Lagoon - Mangrove Modifier |
| Brackish Tidal Marsh & Wetland | Southwest Florida Perched Barriers Salt Swamp and Lagoon - Marsh Modifier |
| Coastal Dune & Freshwater Wetland | Atlantic and Gulf Coastal Plain Interdunal Wetland |
| Freshwater Tidal Marsh & Wetland | Florida Big Bend Fresh-Oligohaline Tidal Marsh |
| Water | Open Water (Aquaculture) |
| Water | Open Water (Brackish/Salt) |
| Water | Open Water (Fresh) |
| Wetlands | South Florida Bayhead Swamp |
| Wetlands | South Florida Freshwater Slough and Gator Hole |
| Wetlands | South Florida Pond-Apple/Popash Slough |
| Wetlands | South Florida Wet Marl Prairie |
| Wetlands | South Florida Willow Head |
| Wetlands | Southern Coastal Plain Blackwater River Floodplain Forest |
| Wetlands | Unconsolidated Shore (Lake/River/Pond) |

CITATIONS: Allen, R.P. 1942. The roseate spoonbill. Nat. Audubon Soc. Resources Report no. 2.

American Ornithologists' Union (AOU), Committee on Classification and Nomenclature. 1983. Check-list of North American Birds. Sixth Edition. American Ornithologists' Union, Allen Press, Inc., Lawrence, Kansas.

Dumas, Jeannette V. 2000. Roseate Spoonbill (*Platalea ajaja*), The Birds of North America Online (A. Poole, Ed.). Ithaca: Cornell Lab of Ornithology; No. 490.

Hancock, J. A., J. A. Kushlan, and M. P. Kahl. 1992. Storks, ibises, and spoonbills off the world. Academic Press. ca. 464 pp.

Harrison, C. 1978. A field guide to the nests, eggs and nestlings of North American birds. Collins, Cleveland, Ohio.

Harrison, H.H. 1979. A field guide to western birds' nests. Houghton Mifflin Company, Boston. 279 pp.

National Geographic Society (NGS). 1983. Field guide to the birds of North America. National Geographic Society, Washington, D.C.

Palmer, R. S. (editor). 1962. Handbook of North American birds. Vol. 1. Loons through flamingos. Yale University Press, New Haven. 567 pp.

Powell, G. V. N. 1987. Habitat use by wading birds in a subtropical estuary: implications of hydrography. Auk 104:740-749.

Root, T. 1988. Atlas of wintering North American birds:An analysis of Christmas Bird Count data. University of Chicago Press. 336 pp.

Spendelow, J.A., and S.R. Patton. 1988. National atlas of coastal waterbird colonies in the contiguous United States:1976-1982. U.S. Fish and Wildlife Service, Biological Report 88(5). x + 326 pp.

Stiles, F.G., and A.F. Skutch. 1989. A guide to the birds of Costa Rica. Comstock Publ. Associates, Cornell University Press, Ithaca, New York. 511 pp.

Terres, J.K. 1980. The Audubon Society encyclopedia of North American birds. Alfred A. Knopf, New York.

For more information:: SE-GAP Analysis Project / BaSIC
127 David Clark Labs
Dept. of Biology, NCSU
Raleigh, NC 27695-7617
(919) 513-2853
www.basic.ncsu.edu/segap

Compiled: 15 September 2011

This data was compiled and/or developed
by the Southeast GAP Analysis Project at
The Biodiversity and Spatial Information
Center, North Carolina State University.