



SOUTHEAST GAP ANALYSIS PROJECT



Species Modeling Report

Rock Pigeon

Columba livia

Taxa: Avian

Order: Columbiformes

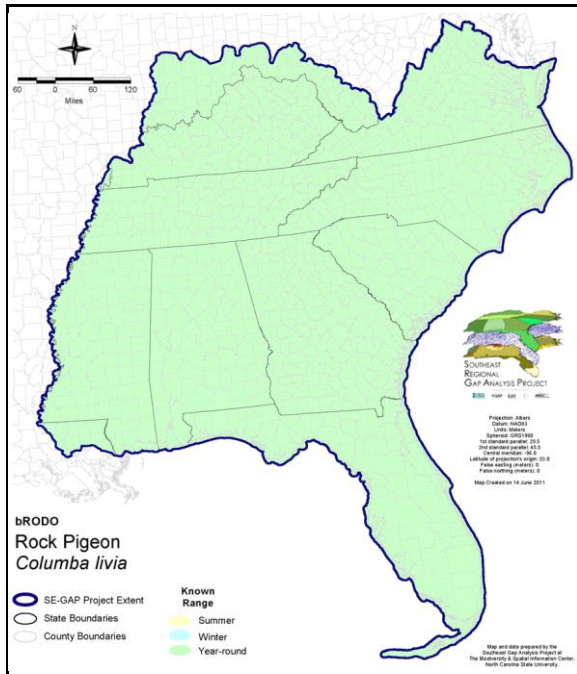
Family: Columbidae

SE-GAP Spp Code: **bRODO**

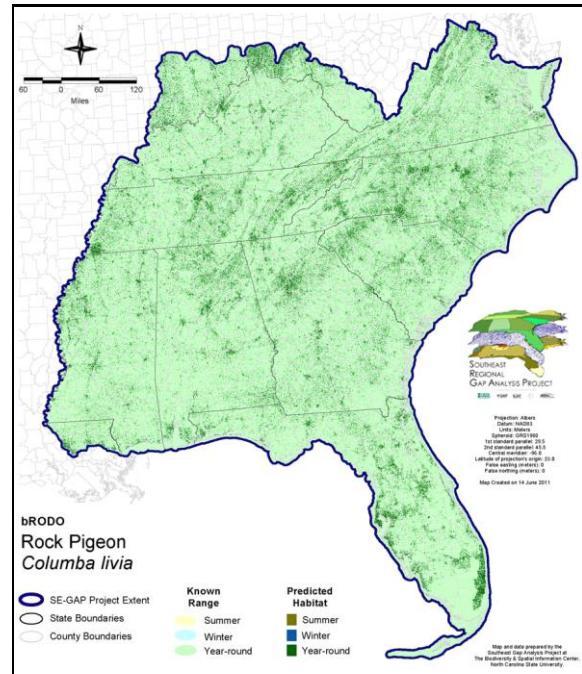
ITIS Species Code: 177071

NatureServe Element Code: ABNPB01010

KNOWN RANGE:



PREDICTED HABITAT:



Range Map Link: http://www.basic.ncsu.edu/segap/datazip/maps/SE_Range_bRODO.pdf

Predicted Habitat Map Link: http://www.basic.ncsu.edu/segap/datazip/maps/SE_Dist_bRODO.pdf

GAP Online Tool Link: <http://www.gapservice.ncsu.edu/segap/segap/index2.php?species=bRODO>

Data Download: http://www.basic.ncsu.edu/segap/datazip/region/vert/bRODO_se00.zip

PROTECTION STATUS:

Reported on March 14, 2011

Federal Status: ---

State Status: KY (N), NJ (I/), NV (YES), NY (U), RI (Not Listed), UT (None), BC (7 (2005)), QC (Non suivie)

NS Global Rank: G5

NS State Rank: AL (SNA), AR (SNA), AZ (SNA), CA (SNA), CO (SNA), CT (SNA), DC (SNA), DE (SNA), FL (SNA), GA (SNA), HI (SNA), IA (SNA), ID (SNA), IL (SNA), IN (SNA), KS (SNA), KY (SNA), LA (SNA), MA (SNA), MD (SNA), ME (SNA), MI (SNA), MN (SNA), MO (SNA), MS (SNA), MT (SNA), NC (SNA), ND (SNA), NE (SNA), NH (SNA), NJ (SNA), NM (SNA), NV (SNA), NY (SNA), OH (SNA), OK (SNA), OR (SNA), PA (SNA), RI (SNA), SC (SNA), SD (SNA), TN (SNA), TX (SNA), UT (SNA), VA (SNA), VT (SNA), WA (SNA), WI (SNA), WV (SNA), WY (SNA), AB (SNA), BC (SNA), LB (SNA), MB (SNA), NB (SNA), NF (SNA), NS (SNA), NT (SNA), NU (SNA), ON (SNA), PE (SNA), QC (SNA), SK (SNA), YT (SNA)

SUMMARY OF PREDICTED HABITAT BY MANAGMENT AND GAP PROTECTION STATUS:

	US FWS		US Forest Service		Tenn. Valley Author.		US DOD/ACOE	
	ha	%	ha	%	ha	%	ha	%
Status 1	1,598.0	< 1	110.3	< 1	0.0	0	0.0	0
Status 2	5,433.9	< 1	3,677.8	< 1	0.0	0	69.6	< 1
Status 3	72.5	< 1	42,443.5	< 1	11,003.8	< 1	95,044.2	< 1
Status 4	11.2	< 1	0.0	0	0.0	0	379.0	< 1
Total	7,115.6	< 1	46,231.5	< 1	11,003.8	< 1	95,492.8	< 1
	US Dept. of Energy		US Nat. Park Service		NOAA		Other Federal Lands	
	ha	%	ha	%	ha	%	ha	%
Status 1	0.0	0	2,917.4	< 1	0.0	0	368.4	< 1
Status 2	0.0	0	1,490.1	< 1	720.3	< 1	16.3	< 1
Status 3	2,795.4	< 1	16,085.1	< 1	0.0	0	1,627.0	< 1
Status 4	0.0	0	0.0	0	0.0	0	0.0	0
Total	2,795.4	< 1	20,492.6	< 1	720.3	< 1	2,011.7	< 1
	Native Am. Reserv.		State Park/Hist. Park		State WMA/Gameland		State Forest	
	ha	%	ha	%	ha	%	ha	%
Status 1	0.0	0	31.2	< 1	0.0	0	0.0	0
Status 2	0.0	0	464.8	< 1	14,626.9	< 1	12.0	< 1
Status 3	2,333.8	< 1	25,889.1	< 1	5,770.9	< 1	11,194.4	< 1
Status 4	0.0	0	0.0	0	2,397.2	< 1	0.6	< 1
Total	2,333.8	< 1	26,385.1	< 1	22,794.9	< 1	11,207.0	< 1
	State Coastal Reserve		ST Nat.Area/Preserve		Other State Lands		Private Cons. Easemt.	
	ha	%	ha	%	ha	%	ha	%
Status 1	0.0	0	172.4	< 1	0.0	0	0.0	0
Status 2	494.6	< 1	1,395.6	< 1	< 0.1	< 1	38.4	< 1
Status 3	0.0	0	549.8	< 1	3,499.7	< 1	3,864.7	< 1
Status 4	0.0	0	0.0	0	490.6	< 1	0.0	0
Total	494.6	< 1	2,117.8	< 1	3,990.4	< 1	3,903.1	< 1
	Private Land - No Res.		Water		Overall Total			
	ha	%	ha	%	ha	%		
Status 1	0.0	0	0.0	0	5,197.6	< 1		
Status 2	0.0	0	0.0	0	28,440.4	< 1		
Status 3	83.9	< 1	0.0	0	222,257.8	2		
Status 4	12,142,313.3	97	9,345.6	< 1	12,157,323.4	98		
Total	12,142,397.2	97	9,345.6	< 1	12,413,219.1	100		

GAP Status 1: An area having permanent protection from conversion of natural land cover and a mandated management plan in operation to maintain a natural state within which disturbance events (of natural type, frequency, and intensity) are allowed to proceed without interference or are mimicked through management.

GAP Status 2: An area having permanent protection from conversion of natural land cover and a mandated management plan in operation to maintain a primarily natural state, but which may receive use or management practices that degrade the quality of existing natural communities.

GAP Status 3: An area having permanent protection from conversion of natural land cover for the majority of the area, but subject to extractive uses of either a broad, low-intensity type or localized intense type. It also confers protection to federally listed endangered and threatened species throughout the area.

GAP Status 4: Lack of irrevocable easement or mandate to prevent conversion of natural habitat types to anthropogenic habitat types. Allows for intensive use throughout the tract. Also includes those tracts for which the existence of such restrictions or sufficient information to establish a higher status is unknown.

PREDICTED HABITAT MODEL(S):

Year-round Model:

Habitat Description: An introduced species, rock pigeons nest gregariously on ledges and manmade structures of various types within one kilometer of foraging areas in open country with short vegetation such as parks, yards, pastures, plowed fields, and farmyards. In cities, rely heavily on human food sources and thus consume a great deal of bread and other scraps (Goodwin 1983, Nicholson 1997). Always found near human habitation (Ehrlich et al. 1988). Non-feral populations nest in crevices, caves, rocky seaside cliffs or interior uplands, in particular near open scrub vegetation or human agriculture (Johnston 1992). However, rarely nests on its ancestral habitat of cliffs, but rather primarily on man-made structures such as barns, buildings, bridges (Nicholson 1997). Amy Silvano 26may05

Ecosystem Classifier: Urban, Disturbed, Cliffs, unconsolidated shores with cliffs as AMUs. Amy Silvano 26may05

Plausible gradation among dove species exploitation of urban environments with Rock Pigeon in Highly Urban, Collared dove in Medium (rare but possibly using only the fringes of natural forests for nesting and roosting), and mourning doves utilizing lower intensity urban environments to natural forested areas (pers. com R.E. Mirarchi). So included in Med & low urban. Amy Silvano 26may05

Customized Model: Use reverse urban avoid mask for an inclusion mask in addition to selected MUs for this species. Select AMUs within 1 KM buffer from PMUs. Amy Silvano 26may05

Avoidance Mask: High - very intolerant of human disturbance.

Selected Map Units:

Functional Group	Map Unit Name
Anthropogenic	Developed Open Space
Anthropogenic	High Intensity Developed
Anthropogenic	Medium Intensity Developed
Anthropogenic	Pasture/Hay
Anthropogenic	Row Crop

Selected Secondary Map Units within 1000m of Primary Map Units:

Functional Group	Map Unit Name
Rock Outcrop	Southern Appalachian Spray Cliff
Rock Outcrop	Southern Interior Acid Cliff
Rock Outcrop	Southern Appalachian Montane Cliff
Rock Outcrop	Southern Interior Calcareous Cliff
Rock Outcrop	Southern Piedmont Cliff
Rock Outcrop	North-Central Appalachian Acidic Cliff and Talus
Rock Outcrop	North-Central Appalachian Circumneutral Cliff and Talus
Rock Outcrop	Central Interior Acidic Cliff and Talus
Rock Outcrop	Central Interior Calcareous Cliff and Talus
Wetlands	Unconsolidated Shore (Lake/River/Pond)

CITATIONS: American Ornithologists' Union (AOU), Committee on Classification and Nomenclature. 1983. Check-list of North American Birds. Sixth Edition. American Ornithologists' Union, Allen Press, Inc., Lawrence, Kansas.

Banks, R. C., and M. R. Browning. 1995. Comments on the status of revived old names for some North American birds. *Auk* 112:633-648.

Droege, S., and J.R. Sauer. 1990. North American Breeding Bird Survey, annual summary, 1989. U.S. Fish and Wildlife Service, Biological Report 90(8). 22 pp.

Ehrlich, P.R., D.S. Dobkin, and D. Wheye. 1988. *The birder's handbook: a field guide to the natural history of North American birds*. Simon and Shuster, Inc., New York. xxx + 785 pp.

Goodwin, D. 1983. *Pigeons and doves of the world*. Third edition. British Museum (Natural History), London, and Cornell Univ. Press, Ithaca. 363 pp. [496 pp.?).

Harrison, C. 1978. *A field guide to the nests, eggs and nestlings of North American birds*. Collins, Cleveland, Ohio.

Harrison, H.H. 1979. *A field guide to western birds' nests*. Houghton Mifflin Company, Boston. 279 pp.

Johnston, R. F., and S. G. Johnson. 1990. Reproductive ecology of feral pigeons. Pages 237-252 in J. Pinowski and J. D. Summers-Smith, editors. Granivorous birds in the agricultural landscape. Polish Scientific Publisher, Warszawa. 360 pp.

Johnston, R.F. 1992. Rock dove (*Columba livia*). In A. Poole, P. Stettenheim, and F. Gill, eds., *The Birds of North America*, No. 13. The Academy of Natural Sciences, Philadelphia and The American Ornithologists' Union, Washington, DC.

Nicholson CP. 1997. *Atlas of the breeding birds of Tennessee*. Knoxville: University of Tennessee Press.

Potter, E. F., J. F. Parnell, and R. P. Teulings. 1980. *Birds of the Carolinas*. Univ. North Carolina Press, Chapel Hill. 408 pp.

Simpson MB Jr. 1992. *Birds of the Blue Ridge Mountains*. Chapel Hill and London: University of North Carolina Press.

Tansey, M. F., and R. P. Roth. 1970. Pigeons, a new role in air pollution. *J. Air Pollution Control Assoc.* 20:307-309.

Terres, J.K. 1980. *The Audubon Society encyclopedia of North American birds*. Alfred A. Knopf, New York.

For more information:: SE-GAP Analysis Project / BaSIC
127 David Clark Labs
Dept. of Biology, NCSU
Raleigh, NC 27695-7617
(919) 513-2853
www.basic.ncsu.edu/segap

Compiled: 15 September 2011

This data was compiled and/or developed
by the Southeast GAP Analysis Project at
The Biodiversity and Spatial Information
Center, North Carolina State University.