



SOUTHEAST GAP ANALYSIS PROJECT



Species Modeling Report

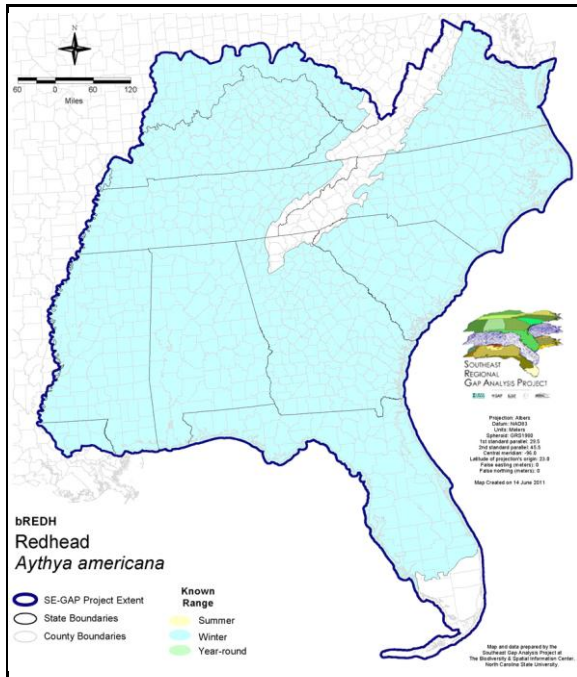
Redhead

Aythya americana

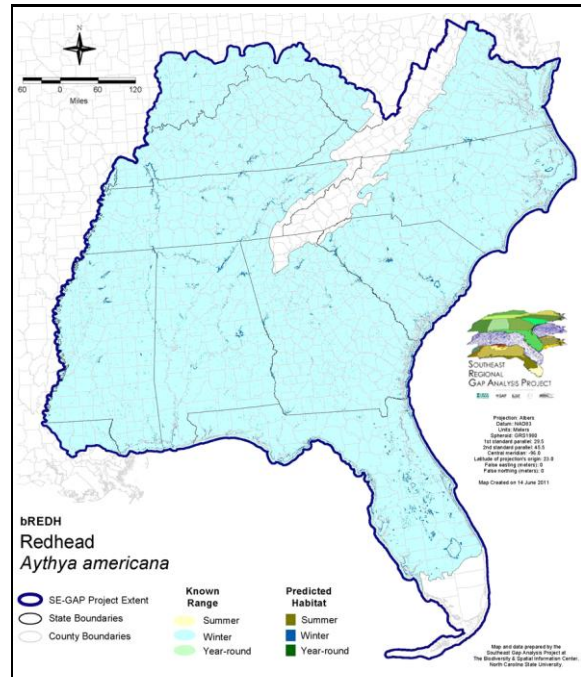
Taxa: Avian
 Order: Anseriformes
 Family: Anatidae

SE-GAP Spp Code: **bREDH**
 ITIS Species Code: 175125
 NatureServe Element Code: ABNJB11030

KNOWN RANGE:



PREDICTED HABITAT:



Range Map Link: http://www.basic.ncsu.edu/segap/datazip/maps/SE_Range_bREDH.pdf

Predicted Habitat Map Link: http://www.basic.ncsu.edu/segap/datazip/maps/SE_Dist_bREDH.pdf

GAP Online Tool Link: <http://www.gapservice.ncsu.edu/segap/segap/index2.php?species=bREDH>

Data Download: http://www.basic.ncsu.edu/segap/datazip/region/vert/bREDH_se00.zip

PROTECTION STATUS:

Reported on March 14, 2011

Federal Status: ---

State Status: AL (GB), CA (None), ID (G), ID (G), KY (N), ND (Level II), NV (YES), NY (PB - GS), OH (SI), RI (Not Listed), UT (None), WI (SC/M), WI (SC/M), BC (4 (2005)), QC (Non suivie)

NS Global Rank: G5

NS State Rank: AK (S3S4B), AK (S3S4B), AL (S4N), AR (S3N), AZ (S4), CA (SNR), CO (S4B), CO (S4B), CT (SNA), DC (S1N), DE (S2N), FL (SNRN), GA (S4), IA (S2B,S4N), ID (S5B), ID (S5B), IL (SNA), IN (S1B), IN (S1B), KS (S1B,S4N), KY (SNA), LA (S4N), MA (S3N), MD (S2N), ME (SNA), MI (S3), MN (SNRB,SNRM), MO (SNRN,SNRM), MS (S4N), MT (S5B), MT (S5B), NC (S3N), ND (SNRB), NE (S4), NH (SNA), NJ (SNA), NM (S4B,S5N), NV (S4B), NY (SNA), OH (SNA), OK (S5N), OR (S4), PA (S2S3N), RI (S2N), SC (SNRN), SD (S4B), SD (S4B), TN (S4N), TX (S3B,S4N), UT (S3B,S3S4N), VA (SNRN), VT (S2N), WA (S3N,S5B), WI (S2B), WI (S2B), WV (S2N), WY (S4N,S5B), AB (S5), BC (S4S5B,S5N), LB (SNA), MB (S4S5B), MB (S4S5B), NB (SNA), NF (SNA), NS (SNA), NT (SNRB), ON (S2B,S4N), ON (S2B,S4N), PE (SNA), QC (S4B), SK (S5B,S5M,S2N), YT (S3B)

SUMMARY OF PREDICTED HABITAT BY MANAGMENT AND GAP PROTECTION STATUS:

	US FWS		US Forest Service		Tenn. Valley Author.		US DOD/ACOE	
	ha	%	ha	%	ha	%	ha	%
Status 1	12,191.7	4	0.0	0	0.0	0	0.0	0
Status 2	7,098.0	3	40.5	< 1	0.0	0	44.2	< 1
Status 3	189.9	< 1	362.2	< 1	26.8	< 1	5,144.4	2
Status 4	1.5	< 1	0.0	0	0.0	0	11.0	< 1
Total	19,481.1	7	402.7	< 1	26.8	< 1	5,199.6	2
	US Dept. of Energy		US Nat. Park Service		NOAA		Other Federal Lands	
	ha	%	ha	%	ha	%	ha	%
Status 1	0.0	0	49.4	< 1	359.8	< 1	660.2	< 1
Status 2	0.0	0	8,375.4	3	7,246.2	3	2.6	< 1
Status 3	0.0	0	875.3	< 1	0.0	0	5.7	< 1
Status 4	0.0	0	3.0	0	0.0	0	0.0	0
Total	0.0	0	9,303.2	3	7,606.0	3	668.5	< 1
	Native Am. Reserv.		State Park/Hist. Park		State WMA/Gameland		State Forest	
	ha	%	ha	%	ha	%	ha	%
Status 1	0.0	0	2.2	< 1	0.0	0	0.0	0
Status 2	0.0	0	41.9	< 1	14,518.7	5	0.0	0
Status 3	0.0	0	9,532.0	3	2,293.5	< 1	382.8	< 1
Status 4	0.0	0	0.0	0	187.7	< 1	0.0	0
Total	0.0	0	9,576.1	3	16,999.9	6	382.8	< 1
	State Coastal Reserve		ST Nat.Area/Preserve		Other State Lands		Private Cons. Easemt.	
	ha	%	ha	%	ha	%	ha	%
Status 1	0.0	0	175.6	< 1	0.0	0	0.0	0
Status 2	8,602.4	3	4,831.0	2	0.0	0	0.7	< 1
Status 3	0.0	0	171.6	< 1	163.7	< 1	190.6	< 1
Status 4	0.0	0	0.0	0	0.3	< 1	0.0	0
Total	8,602.4	3	5,178.2	2	164.0	< 1	191.3	< 1
	Private Land - No Res.		Water		Overall Total			
	ha	%	ha	%	ha	%		
Status 1	0.0	3	0.0	0	13,439.0	5		
Status 2	0.6	< 1	0.0	6	50,802.5	18		
Status 3	72.6	< 1	< 0.1	< 1	19,411.2	7		
Status 4	174,013.0	62	23,929.1	8	198,331.9	70		
Total	174,086.4	62	23,929.4	8	281,984.6	100		

GAP Status 1: An area having permanent protection from conversion of natural land cover and a mandated management plan in operation to maintain a natural state within which disturbance events (of natural type, frequency, and intensity) are allowed to proceed without interference or are mimicked through management.

GAP Status 2: An area having permanent protection from conversion of natural land cover and a mandated management plan in operation to maintain a primarily natural state, but which may receive use or management practices that degrade the quality of existing natural communities.

GAP Status 3: An area having permanent protection from conversion of natural land cover for the majority of the area, but subject to extractive uses of either a broad, low-intensity type or localized intense type. It also confers protection to federally listed endangered and threatened species throughout the area.

GAP Status 4: Lack of irrevocable easement or mandate to prevent conversion of natural habitat types to anthropogenic habitat types. Allows for intensive use throughout the tract. Also includes those tracts for which the existence of such restrictions or sufficient information to establish a higher status is unknown.

PREDICTED HABITAT MODEL(S):

Winter Model:

Habitat Description: Redhead winter mostly in brackish and salt lagoons and bays (NatureServe 2005). Inland this species prefers deeper lakes, rivers and bays but it will utilize shallow ponds to a lesser extent (Stevenson & Anderson 1994).

Ecosystem Classifiers: Open water, Coastal, Freshwater & Brackish Marshes, Lakes/ponds/Rivers, Floodplain/Riparian. Amy Silvano 05Sept05

Hydrography Mask:

Slow Current Only

Utilizes flowing water features with buffers of 30m from and 1000m into selected water features.

Utilizes open water features with buffers of 30m from and 1000m into selected water features.

Selected Map Units:

Functional Group	Map Unit Name
Brackish Tidal Marsh & Wetland	Atlantic Coastal Plain Central Salt and Brackish Tidal Marsh
Brackish Tidal Marsh & Wetland	Atlantic Coastal Plain Embayed Region Tidal Salt and Brackish Marsh
Brackish Tidal Marsh & Wetland	Atlantic Coastal Plain Indian River Lagoon Tidal Marsh
Brackish Tidal Marsh & Wetland	Atlantic Coastal Plain Northern Sea-Level Fen
Brackish Tidal Marsh & Wetland	Atlantic Coastal Plain Northern Tidal Salt Marsh
Brackish Tidal Marsh & Wetland	Atlantic Coastal Plain Northern Tidal Wooded Swamp
Brackish Tidal Marsh & Wetland	Atlantic Coastal Plain Southern Tidal Wooded Swamp
Brackish Tidal Marsh & Wetland	East Gulf Coastal Plain Tidal Wooded Swamp
Brackish Tidal Marsh & Wetland	Florida Big Bend Salt-Brackish Tidal Marsh
Brackish Tidal Marsh & Wetland	Mississippi Sound Salt and Brackish Tidal Marsh
Brackish Tidal Marsh & Wetland	South Florida Everglades Sawgrass Marsh
Brackish Tidal Marsh & Wetland	South Florida Mangrove Swamp
Brackish Tidal Marsh & Wetland	Southwest Florida Perched Barriers Salt Swamp and Lagoon - Mangrove Modifier
Brackish Tidal Marsh & Wetland	Southwest Florida Perched Barriers Salt Swamp and Lagoon - Marsh Modifier
Coastal Dune & Freshwater Wetland	Atlantic and Gulf Coastal Plain Interdunal Wetland
Freshwater Tidal Marsh & Wetland	Atlantic Coastal Plain Central Fresh-Oligohaline Tidal Marsh
Freshwater Tidal Marsh & Wetland	Atlantic Coastal Plain Embayed Region Tidal Freshwater Marsh
Freshwater Tidal Marsh & Wetland	Atlantic Coastal Plain Northern Fresh and Oligohaline Tidal Marsh
Freshwater Tidal Marsh & Wetland	Florida Big Bend Fresh-Oligohaline Tidal Marsh
Water	Open Water (Brackish/Salt)
Water	Open Water (Fresh)
Wetlands	Atlantic Coastal Plain Blackwater Stream Floodplain Forest - Herbaceous Modifier
Wetlands	Atlantic Coastal Plain Large Natural Lakeshore
Wetlands	Atlantic Coastal Plain Xeric River Dune
Wetlands	Central Appalachian Floodplain - Herbaceous Modifier
Wetlands	Central Appalachian Riparian - Herbaceous Modifier
Wetlands	East Gulf Coastal Plain Large River Floodplain Forest - Herbaceous Modifier
Wetlands	Lower Mississippi River Bottomland Depressions - Herbaceous Modifier
Wetlands	South Florida Pond-Apple/Popash Slough
Wetlands	South-Central Interior Large Floodplain - Herbaceous Modifier
Wetlands	Southern Coastal Plain Spring-run Stream Aquatic Vegetation
Wetlands	Southern Piedmont Large Floodplain Forest - Herbaceous Modifier
Wetlands	Unconsolidated Shore (Lake/River/Pond)

CITATIONS: American Ornithologists' Union (AOU), Committee on Classification and Nomenclature. 1983. Check-list of North American Birds. Sixth Edition. American Ornithologists' Union, Allen Press, Inc., Lawrence, Kansas.

Bellrose, F. C. 1980. Ducks, geese and swans of North America. Stackpole Books, Harrisburg, Pennsylvania. 540 pp.

Bellrose, F.C. 1976. Ducks, geese and swans of North America. Stackpole Books, Harrisburg, Pa.

- Custer, C. M. 1993. Life history traits and habitat needs of the redhead. Part 13.1.11 of Waterfowl management handbook. 7 pp.
- Harrison, C. 1978. A field guide to the nests, eggs and nestlings of North American birds. Collins, Cleveland, Ohio.
- Marcy, L. E. 1986. Waterfowl nest baskets. Section 5.1.3, US Army Corps of Engineers Wildlife Resources Management Manual. Tech. Rep. EL-86-15. Waterways Expt. Station, Vicksburg, Mississippi. 16 pp.
- Root, T. 1988. Atlas of wintering North American birds:An analysis of Christmas Bird Count data. University of Chicago Press. 336 pp.
- Terres, J.K. 1980. The Audubon Society encyclopedia of North American birds. Alfred A. Knopf, New York.
- U.S. Fish & Wildl. Serv. 1988. SEIS 88. Final supplemental environmental impact statement:issuance of annual regulations permitting the sport hunting of migratory birds. x + 340 pp.
- Woodin, M. C., and G. A. Swanson. 1989. Foods and dietary strategies of prairie-nesting ruddy ducks and redheads. Condor 91:280-287.
- Woodin, M. C., and T. C. Michot. 2007. Redhead (*Aythya americana*). In The Birds of North America, No. 695 (A. Poole and F. Gill, eds.). The Birds of North America, Inc., Philadelphia, PA.

For more information:: SE-GAP Analysis Project / BaSIC
127 David Clark Labs
Dept. of Biology, NCSU
Raleigh, NC 27695-7617
(919) 513-2853
www.basic.ncsu.edu/segap

Compiled: 15 September 2011

This data was compiled and/or developed
by the Southeast GAP Analysis Project at
The Biodiversity and Spatial Information
Center, North Carolina State University.