



SOUTHEAST GAP ANALYSIS PROJECT



Species Modeling Report

Rose-breasted Grosbeak

Pheucticus ludovicianus

Taxa: Avian

Order: Passeriformes

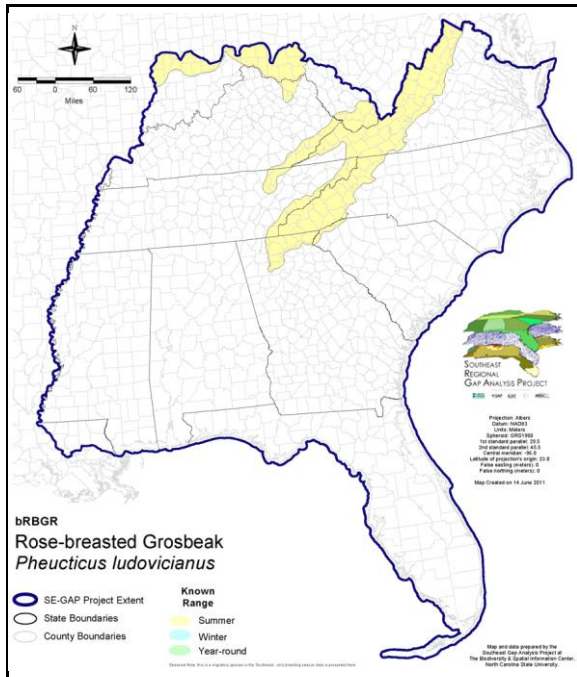
Family: Cardinalidae

SE-GAP Spp Code: **bRBGR**

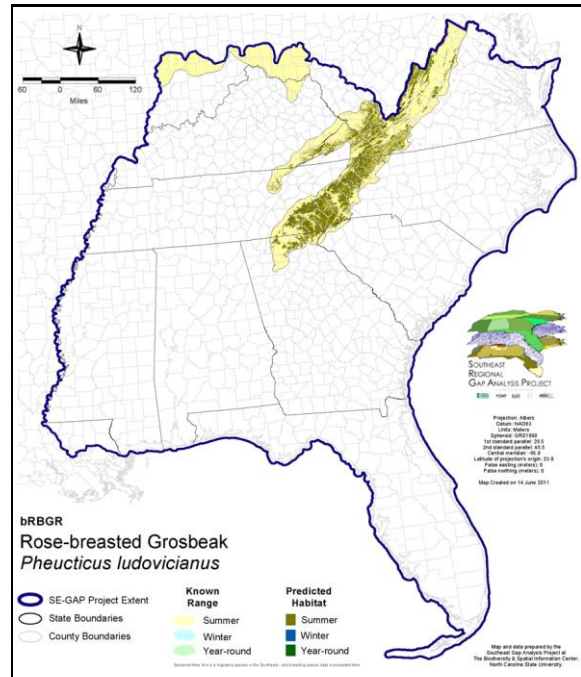
ITIS Species Code: 179139

NatureServe Element Code: ABPBX61030

KNOWN RANGE:



PREDICTED HABITAT:



Range Map Link: http://www.basic.ncsu.edu/segap/datazip/maps/SE_Range_bRBGR.pdf

Predicted Habitat Map Link: http://www.basic.ncsu.edu/segap/datazip/maps/SE_Dist_bRBGR.pdf

GAP Online Tool Link: <http://www.gapservice.ncsu.edu/segap/segap/index2.php?species=bRBGR>

Data Download: http://www.basic.ncsu.edu/segap/datazip/region/vert/bRBGR_se00.zip

PROTECTION STATUS:

Reported on March 14, 2011

Federal Status: ---

State Status: ID (P), KY (S), NJ (S/S), NV (YES), NY (PB), RI (Not Listed), UT (None), BC (4 (2005)), QC (Non suivie)

NS Global Rank: G5

NS State Rank: AK (SNA), AL (SNR), AR (SNA), AZ (S3N), CA (SNA), CO (SNA), CO (SNA), CT (S5B), CT (S5B), DC (S3N), DE (SNA), DE (SNA), FL (SNA), GA (S4), IA (S5B,S5N), ID (SNA), IL (S5), IN (S4B), KS (S3B), KY (S3S4B), LA (SNA), MA (S5B), MD (S3S4B), ME (S5B), MI (S5), MN (SNRB), MO (SNRB), MS (SNA), MT (SNA), NC (S3B), NC (S3B), ND (SNRB), NE (S4), NH (S5B), NJ (S4B), NM (S4N), NV (SNA), NY (S5), OH (S5), OK (S2B), OR (SNA), PA (S5B), RI (S4B), SC (S3?B), SD (S5B), SD (S5B), TN (S4B,S5N), TX (S4), UT (SNA), VA (S4), VT (S5B), VT (S5B), WA (SNA), WI (S5B), WI (S5B), WV (S5B), WY (S1), WY (S1), AB (S5), BC (S4S5B), LB (SNA), MB (S4S5B), MB (S4S5B), NB (S5B), NF (S1S2B), NS (S4B), NT (SNRB), ON (S4B), PE (S5B), QC (S4S5B), SK (S5B), SK (S5B), YT (S2B)

SUMMARY OF PREDICTED HABITAT BY MANAGMENT AND GAP PROTECTION STATUS:

	US FWS		US Forest Service		Tenn. Valley Author.		US DOD/ACOE	
	ha	%	ha	%	ha	%	ha	%
Status 1	0.0	0	24,171.6	< 1	0.0	0	0.0	0
Status 2	0.0	0	204,869.4	5	0.0	0	0.0	0
Status 3	0.0	0	806,083.5	21	0.0	0	0.0	0
Status 4	0.0	0	0.0	0	0.0	0	0.0	0
Total	0.0	0	1,035,124.5	27	0.0	0	0.0	0
	US Dept. of Energy		US Nat. Park Service		NOAA		Other Federal Lands	
	ha	%	ha	%	ha	%	ha	%
Status 1	0.0	0	188,647.1	5	0.0	0	0.0	0
Status 2	0.0	0	3,895.7	< 1	0.0	0	0.0	0
Status 3	0.0	0	28,754.9	< 1	0.0	0	0.0	0
Status 4	0.0	0	0.0	0	0.0	0	0.0	0
Total	0.0	0	221,297.8	6	0.0	0	0.0	0
	Native Am. Reserv.		State Park/Hist. Park		State WMA/Gameland		State Forest	
	ha	%	ha	%	ha	%	ha	%
Status 1	0.0	0	0.0	0	0.0	0	0.0	0
Status 2	0.0	0	5,318.7	< 1	47,372.9	1	1.9	< 1
Status 3	16,315.8	< 1	10,311.2	< 1	8,094.2	< 1	5,674.2	< 1
Status 4	0.0	0	0.0	0	845.4	< 1	0.0	0
Total	16,315.8	< 1	15,629.9	< 1	56,312.5	1	5,676.1	< 1
	State Coastal Reserve		ST Nat.Area/Preserve		Other State Lands		Private Cons. Easemt.	
	ha	%	ha	%	ha	%	ha	%
Status 1	0.0	0	1,659.2	< 1	0.0	0	0.0	0
Status 2	0.0	0	6,916.7	< 1	0.0	0	0.0	0
Status 3	0.0	0	0.0	0	36.7	< 1	0.0	0
Status 4	0.0	0	0.0	0	102.6	< 1	0.0	0
Total	0.0	0	8,575.9	< 1	139.3	< 1	0.0	0
	Private Land - No Res.		Water		Overall Total			
	ha	%	ha	%	ha	%		
Status 1	0.0	0	0.0	0	214,477.9	5		
Status 2	0.0	0	0.0	0	268,375.4	7		
Status 3	0.0	0	0.0	0	875,270.5	43		
Status 4	1,739,582.7	45	26.8	< 1	1,741,402.9	45		
Total	1,739,582.7	45	26.8	< 1	3,099,526.7	100		

GAP Status 1: An area having permanent protection from conversion of natural land cover and a mandated management plan in operation to maintain a natural state within which disturbance events (of natural type, frequency, and intensity) are allowed to proceed without interference or are mimicked through management.

GAP Status 2: An area having permanent protection from conversion of natural land cover and a mandated management plan in operation to maintain a primarily natural state, but which may receive use or management practices that degrade the quality of existing natural communities.

GAP Status 3: An area having permanent protection from conversion of natural land cover for the majority of the area, but subject to extractive uses of either a broad, low-intensity type or localized intense type. It also confers protection to federally listed endangered and threatened species throughout the area.

GAP Status 4: Lack of irrevocable easement or mandate to prevent conversion of natural habitat types to anthropogenic habitat types. Allows for intensive use throughout the tract. Also includes those tracts for which the existence of such restrictions or sufficient information to establish a higher status is unknown.

PREDICTED HABITAT MODEL(S):

Summer Model:

Habitat Description: Rose-breasted grosbeaks occur in a wide variety of deciduous and mixed wooded upland and lowland habitats (Wyatt & Francis 2002). They are found in second growth (Ehrlich et al. 1988), medium, or mature deciduous forests (Simpson 1992) with a medium to dense understory (Nicholson 1997), or wherever there is a dense growth of trees and shrubs along the margin of forests, pastures, or streams (Bent 1968), gardens and orchards (Wyatt & Francis 2002). Has also been known to nest in heath balds and abandoned strip mines (Nicholson 1997). This species 'exhibits a preference for mesic woodlands, swamp forests, riparian corridors; and avoids dry oak woodlands' (Wyatt & Francis 2002). Amy Silvano 9jum05

***Portions quoted directly from state hab notes. Amy Silvano 9jum05

Elevation Mask: > 670m and < 2500m

Selected Map Units:

Functional Group	Map Unit Name
Anthropogenic	Deciduous Plantations
Anthropogenic	Developed Open Space
Anthropogenic	Successional Shrub/Scrub (Clear Cut)
Anthropogenic	Successional Shrub/Scrub (Other)
Anthropogenic	Successional Shrub/Scrub (Utility Swath)
Bald	Central Appalachian Montane Rocky Bald - Shrub Modifier
Bald	Southern Appalachian Grass and Shrub Bald - Shrub Modifier
Forest/Woodland	Allegheny-Cumberland Dry Oak Forest and Woodland
Forest/Woodland	Allegheny-Cumberland Dry Oak Forest and Woodland - Hardwood Modifier
Forest/Woodland	Appalachian Hemlock-Hardwood Forest
Forest/Woodland	Central and Southern Appalachian Montane Oak Forest
Forest/Woodland	Central and Southern Appalachian Northern Hardwood Forest
Forest/Woodland	Central Appalachian Oak and Pine Forest
Forest/Woodland	Northeastern Interior Dry Oak Forest - Mixed Modifier
Forest/Woodland	Northeastern Interior Dry Oak Forest-Hardwood Modifier
Forest/Woodland	South-Central Interior Mesophytic Forest
Forest/Woodland	Southern and Central Appalachian Cove Forest
Forest/Woodland	Southern and Central Appalachian Oak Forest
Forest/Woodland	Southern and Central Appalachian Oak Forest - Xeric
Forest/Woodland	Southern Appalachian Montane Pine Forest and Woodland
Forest/Woodland	Southern Interior Low Plateau Dry-Mesic Oak Forest
Forest/Woodland	Southern Interior Low Plateau Dry-Mesic Oak Forest - Evergreen Modifier
Forest/Woodland	Southern Piedmont Dry Oak-Heath Forest - Virginia/Pitch Pine Modifier
Forest/Woodland	Southern Ridge and Valley Dry Calcareous Forest
Forest/Woodland	Southern Ridge and Valley Dry Calcareous Forest - Hardwood Modifier
Wetlands	Central Appalachian Floodplain - Forest Modifier
Wetlands	Central Appalachian Riparian - Forest Modifier
Wetlands	Central Interior Highlands and Appalachian Sinkhole and Depression Pond
Wetlands	North-Central Appalachian Acidic Swamp
Wetlands	North-Central Appalachian Seepage Fen
Wetlands	North-Central Interior and Appalachian Rich Swamp
Wetlands	South-Central Interior Large Floodplain - Forest Modifier
Wetlands	South-Central Interior Small Stream and Riparian
Wetlands	Southern and Central Appalachian Bog and Fen

CITATIONS: American Ornithologists' Union (AOU), Committee on Classification and Nomenclature. 1983. Check-list of North American Birds. Sixth Edition. American Ornithologists' Union, Allen Press, Inc., Lawrence, Kansas.

Bent, A. C. 1968. Life histories of North American cardinals, grosbeaks, buntings, towhees, finches, sparrows, and allies. Bull. U.S. Nat. Mus. 237.

- Ehrlich, P.R., D.S. Dobkin, and D. Wheye. 1988. *The birder's handbook: a field guide to the natural history of North American birds*. Simon and Shuster, Inc., New York. xxx + 785 pp.
- Hagan, J.M., III, and D.W. Johnston, editors. 1992. *Ecology and conservation of neotropical migrant landbirds*. Smithsonian Institution Press, Washington, D.C. xiii + 609 pp.
- Harrison, C. 1978. *A field guide to the nests, eggs and nestlings of North American birds*. Collins, Cleveland, Ohio.
- Harrison, H.H. 1979. *A field guide to western birds' nests*. Houghton Mifflin Company, Boston. 279 pp.
- Hilty, S.L., and W.L. Brown. 1986. *A guide to the birds of Colombia*. Princeton University Press, Princeton, New Jersey. 836 pp.
- Nicholson CP. 1997. *Atlas of the breeding birds of Tennessee*. Knoxville: University of Tennessee Press.
- Raffaele, H.A. 1983. *A guide to the birds of Puerto Rico and the Virgin Islands*. Fondo Educativo Interamericano, San Juan, Puerto Rico. 255 pp.
- Ridgely, R.S., and G. Tudor. 1989. *The birds of South America*. Vol. 1. *The Oscine passerines*. Univ. Texas Press, Austin. 516 pp.
- Sauer, J.R., and S. Droege. 1992. Geographical patterns in population trends of neotropical migrants in North America. Pages 26-42 in J.M. Hagan III and D.W. Johnston, editors. *Ecology and conservation of neotropical migrant landbirds*. Smithsonian Institution Press.
- Simpson MB Jr. 1992. *Birds of the Blue Ridge Mountains*. Chapel Hill and London: University of North Carolina Press.
- Stiles, F.G., and A.F. Skutch. 1989. *A guide to the birds of Costa Rica*. Comstock Publ. Associates, Cornell University Press, Ithaca, New York. 511 pp.
- Terres, J.K. 1980. *The Audubon Society encyclopedia of North American birds*. Alfred A. Knopf, New York.
- Wyatt, V.E. and C.M. Francis. 2002. Rose-breasted Grosbeak (*Pheucticus ludovicianus*). In *The Birds of North America*, No. 692 (A. Poole and F. Gill, eds.). The Birds of North America, Inc., Philadelphia, PA.

For more information:: SE-GAP Analysis Project / BaSIC
127 David Clark Labs
Dept. of Biology, NCSU
Raleigh, NC 27695-7617
(919) 513-2853
www.basic.ncsu.edu/segap

Compiled: 15 September 2011

This data was compiled and/or developed
by the Southeast GAP Analysis Project at
The Biodiversity and Spatial Information
Center, North Carolina State University.