



# SOUTHEAST GAP ANALYSIS PROJECT



## Species Modeling Report

### Purple Gallinule

*Porphyrio martinica*

Taxa: Avian

Order: Gruiformes

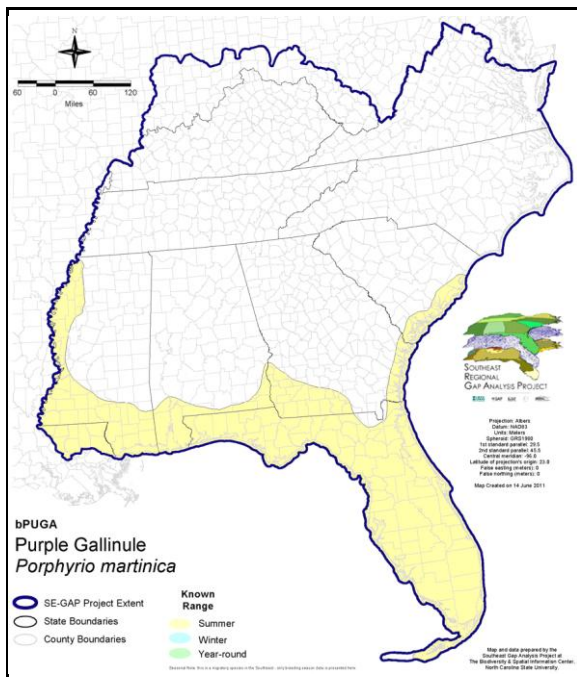
Family: Rallidae

SE-GAP Spp Code: **bPUGA**

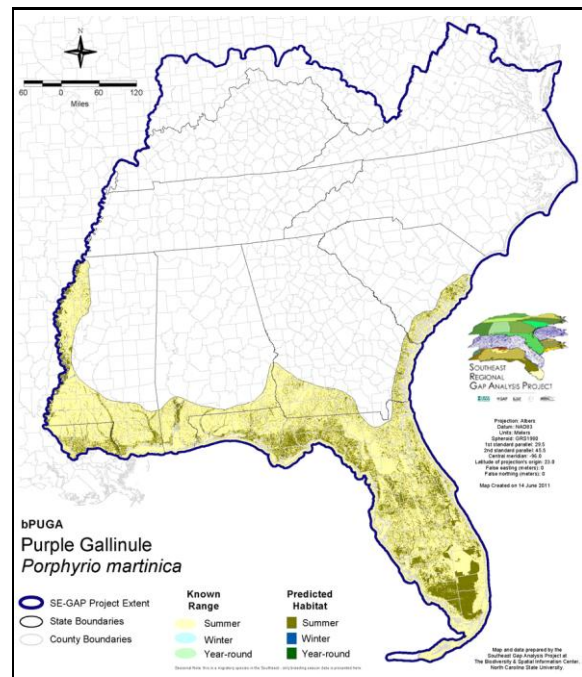
ITIS Species Code: 176280

NatureServe Element Code: ABNME12010

#### KNOWN RANGE:



#### PREDICTED HABITAT:



Range Map Link: [http://www.basic.ncsu.edu/segap/datazip/maps/SE\\_Range\\_bPUGA.pdf](http://www.basic.ncsu.edu/segap/datazip/maps/SE_Range_bPUGA.pdf)

Predicted Habitat Map Link: [http://www.basic.ncsu.edu/segap/datazip/maps/SE\\_Dist\\_bPUGA.pdf](http://www.basic.ncsu.edu/segap/datazip/maps/SE_Dist_bPUGA.pdf)

GAP Online Tool Link: <http://www.gapservice.ncsu.edu/segap/segap/index2.php?species=bPUGA>

Data Download: [http://www.basic.ncsu.edu/segap/datazip/region/vert/bPUGA\\_se00.zip](http://www.basic.ncsu.edu/segap/datazip/region/vert/bPUGA_se00.zip)

#### PROTECTION STATUS:

Reported on March 14, 2011

Federal Status: ---

State Status: AL (GB), IL (RE), KY (N), NC (SR), NV (YES), NY (PB - GS), UT (None), QC (Non suivie)

NS Global Rank: G5

NS State Rank: AL (S3B), AR (S1B), AZ (SNA), CO (SNA), CT (SNA), DC (SNA), DE (SNA), FL (SNR), GA (S4), IL (SNA), IN (SNA), KS (SNA), KY (SNA), LA (S4B), MD (SNA), ME (SNA), MI (SNA), MS (S3B), NC (S1?B), NJ (SNA), NM (SNA), NV (SNA), NY (SNRN), OH (SNA), OK (S1), PA (SNA), SC (S4), TN (S1B), TX (S4B), UT (SNA), VA (SNA), WI (SNA), WY (SNA), LB (SNA), NB (SNA), NF (SNA), NS (SNA), ON (SNA), QC (SNA)

**SUMMARY OF PREDICTED HABITAT BY MANAGMENT AND GAP PROTECTION STATUS:**

	US FWS		US Forest Service		Tenn. Valley Author.		US DOD/ACOE	
	ha	%	ha	%	ha	%	ha	%
Status 1	35,579.2	< 1	5,270.3	< 1	0.0	0	0.0	0
Status 2	43,474.2	< 1	30,150.2	< 1	0.0	0	1.5	< 1
Status 3	0.0	0	226,716.6	3	0.0	0	67,074.4	1
Status 4	0.0	0	0.0	0	0.0	0	0.0	0
Total	79,053.4	1	262,137.1	4	0.0	0	67,075.9	1
	US Dept. of Energy		US Nat. Park Service		NOAA		Other Federal Lands	
	ha	%	ha	%	ha	%	ha	%
Status 1	0.0	0	213,148.9	3	23.9	< 1	7,808.0	< 1
Status 2	0.0	0	4,573.3	< 1	5,461.1	< 1	65.9	< 1
Status 3	0.0	0	266,098.7	4	0.0	0	2,729.2	< 1
Status 4	0.0	0	1.0	2	0.0	0	0.0	0
Total	0.0	0	483,822.6	7	5,485.0	< 1	10,603.0	< 1
	Native Am. Reserv.		State Park/Hist. Park		State WMA/Gameland		State Forest	
	ha	%	ha	%	ha	%	ha	%
Status 1	0.0	0	85.6	< 1	0.0	0	0.0	0
Status 2	0.0	0	344.1	< 1	539,285.6	8	0.0	0
Status 3	9.6	< 1	448,147.9	7	20,451.2	< 1	170,312.9	3
Status 4	0.0	0	< 0.1	< 1	3,688.8	< 1	4.0	< 1
Total	9.6	< 1	448,577.6	7	563,425.6	9	170,316.9	3
	State Coastal Reserve		ST Nat.Area/Preserve		Other State Lands		Private Cons. Easemt.	
	ha	%	ha	%	ha	%	ha	%
Status 1	0.0	0	1,562.9	< 1	0.0	0	0.0	0
Status 2	14,627.5	< 1	6,343.1	< 1	0.0	0	1,638.6	< 1
Status 3	0.0	0	17,941.0	< 1	5,164.5	< 1	87,000.8	1
Status 4	0.0	0	0.0	0	134.8	< 1	0.0	0
Total	14,627.5	< 1	25,847.0	< 1	5,299.3	< 1	88,639.4	1
	Private Land - No Res.		Water		Overall Total			
	ha	%	ha	%	ha	%	ha	%
Status 1	0.0	2	0.0	0	263,478.9 4			
Status 2	0.8	< 1	0.0	< 1	645,966.0 10			
Status 3	98.4	< 1	1.1	< 1	1,311,746.0 24			
Status 4	3,999,788.1	62	34,731.1	< 1	4,042,037.5 62			
Total	3,999,887.5	62	34,732.3	< 1	6,263,228.4 100			

GAP Status 1: An area having permanent protection from conversion of natural land cover and a mandated management plan in operation to maintain a natural state within which disturbance events (of natural type, frequency, and intensity) are allowed to proceed without interference or are mimicked through management.

GAP Status 2: An area having permanent protection from conversion of natural land cover and a mandated management plan in operation to maintain a primarily natural state, but which may receive use or management practices that degrade the quality of existing natural communities.

GAP Status 3: An area having permanent protection from conversion of natural land cover for the majority of the area, but subject to extractive uses of either a broad, low-intensity type or localized intense type. It also confers protection to federally listed endangered and threatened species throughout the area.

GAP Status 4: Lack of irrevocable easement or mandate to prevent conversion of natural habitat types to anthropogenic habitat types. Allows for intensive use throughout the tract. Also includes those tracts for which the existence of such restrictions or sufficient information to establish a higher status is unknown.

## PREDICTED HABITAT MODEL(S):

### Summer Model:

Habitat Description: Breeds mainly in fresh water, but also brackish (<5ppt salt content) waters such as deep marshes, lakes, and impoundments with steady water levels and floating, emergent, and submerged vegetation; prefers there to be considerable edge region between vegetation and open water (Helm 1994, Taylor 1998). Also found on shores of lakes, ponds, and slow rivers, especially in cattails. Not in salt marshes (Layne et al. 1977).

The nest is surrounded by water 4-10 feet deep, located slightly above to 5 feet above water level, placed in floating islands of vegetation or often in pickerelweed (Harrison 1975).

- K. Cook, 15Feb05

### Hydrography Mask:

Utilizes open water features with buffers of 250m from and 30m into selected water features.

Utilizes wet vegetation features with buffers of 250m from and unlimited into selected vegetation features.

### Selected Map Units:

Functional Group	Map Unit Name
Brackish Tidal Marsh & Wetland	Atlantic Coastal Plain Embayed Region Tidal Salt and Brackish Marsh
Brackish Tidal Marsh & Wetland	Mississippi Sound Salt and Brackish Tidal Marsh
Brackish Tidal Marsh & Wetland	South Florida Everglades Sawgrass Marsh
Coastal Dune & Freshwater Wetland	Atlantic and Gulf Coastal Plain Interdunal Wetland
Freshwater Tidal Marsh & Wetland	Atlantic Coastal Plain Central Fresh-Oligohaline Tidal Marsh
Freshwater Tidal Marsh & Wetland	Atlantic Coastal Plain Embayed Region Tidal Freshwater Marsh
Freshwater Tidal Marsh & Wetland	Atlantic Coastal Plain Northern Fresh and Oligohaline Tidal Marsh
Freshwater Tidal Marsh & Wetland	Florida Big Bend Fresh-Oligohaline Tidal Marsh
Water	Open Water (Brackish/Salt)
Water	Open Water (Fresh)
Wetlands	Atlantic Coastal Plain Blackwater Stream Floodplain Forest - Forest Modifier
Wetlands	Atlantic Coastal Plain Blackwater Stream Floodplain Forest - Herbaceous Modifier
Wetlands	Atlantic Coastal Plain Brownwater Stream Floodplain Forest
Wetlands	Atlantic Coastal Plain Clay-Based Carolina Bay Forested Wetland
Wetlands	Atlantic Coastal Plain Clay-Based Carolina Bay Herbaceous Wetland
Wetlands	Atlantic Coastal Plain Depression Pondshore
Wetlands	Atlantic Coastal Plain Large Natural Lakeshore
Wetlands	Atlantic Coastal Plain Nonriverine Swamp and Wet Hardwood Forest - Taxodium/Nyssa Modifier
Wetlands	Atlantic Coastal Plain Nonriverine Swamp and Wet Hardwood Forest - Oak Dominated Modifier
Wetlands	Atlantic Coastal Plain Northern Basin Peat Swamp
Wetlands	Atlantic Coastal Plain Northern Pondshore
Wetlands	Atlantic Coastal Plain Northern Wet Longleaf Pine Savanna and Flatwoods
Wetlands	Atlantic Coastal Plain Peatland Pocosin
Wetlands	Atlantic Coastal Plain Sandhill Seep
Wetlands	Atlantic Coastal Plain Small Blackwater River Floodplain Forest
Wetlands	Atlantic Coastal Plain Small Brownwater River Floodplain Forest
Wetlands	Atlantic Coastal Plain Southern Wet Pine Savanna and Flatwoods
Wetlands	Atlantic Coastal Plain Streamhead Seepage Swamp, Pocosin, and Baygall
Wetlands	Central Appalachian Floodplain - Herbaceous Modifier
Wetlands	Central Appalachian Riparian - Herbaceous Modifier
Wetlands	Central Florida Herbaceous Pondshore
Wetlands	Central Florida Herbaceous Seep
Wetlands	Central Florida Pine Flatwoods
Wetlands	East Gulf Coastal Plain Interior Shrub Bog
Wetlands	East Gulf Coastal Plain Large River Floodplain Forest - Forest Modifier
Wetlands	East Gulf Coastal Plain Large River Floodplain Forest - Herbaceous Modifier
Wetlands	East Gulf Coastal Plain Near-Coast Pine Flatwoods - Offsite Hardwood Modifier
Wetlands	East Gulf Coastal Plain Near-Coast Pine Flatwoods - Open Understory Modifier

Wetlands	East Gulf Coastal Plain Near-Coast Pine Flatwoods - Scrub/Shrub Understory Modifier
Wetlands	East Gulf Coastal Plain Northern Depression Pondshore
Wetlands	East Gulf Coastal Plain Northern Seepage Swamp
Wetlands	East Gulf Coastal Plain Small Stream and River Floodplain Forest
Wetlands	East Gulf Coastal Plain Southern Depression Pondshore
Wetlands	East Gulf Coastal Plain Southern Loblolly-Hardwood Flatwoods
Wetlands	East Gulf Coastal Plain Treeless Savanna and Wet Prairie
Wetlands	Floridian Highlands Freshwater Marsh
Wetlands	Lower Mississippi River Bottomland and Floodplain Forest
Wetlands	Lower Mississippi River Bottomland Depressions - Forest Modifier
Wetlands	Lower Mississippi River Bottomland Depressions - Herbaceous Modifier
Wetlands	Mississippi River Low Floodplain (Bottomland) Forest
Wetlands	Mississippi River Riparian Forest
Wetlands	South Florida Bayhead Swamp
Wetlands	South Florida Cypress Dome
Wetlands	South Florida Dwarf Cypress Savanna
Wetlands	South Florida Freshwater Slough and Gator Hole
Wetlands	South Florida Pine Flatwoods
Wetlands	South Florida Pond-Apple/Popash Slough
Wetlands	South Florida Wet Marl Prairie
Wetlands	South Florida Willow Head
Wetlands	Southern Coastal Plain Blackwater River Floodplain Forest
Wetlands	Southern Coastal Plain Herbaceous Seepage Bog
Wetlands	Southern Coastal Plain Hydric Hammock
Wetlands	Southern Coastal Plain Nonriverine Basin Swamp
Wetlands	Southern Coastal Plain Nonriverine Cypress Dome
Wetlands	Southern Coastal Plain Seepage Swamp and Baygall
Wetlands	Southern Coastal Plain Spring-run Stream Aquatic Vegetation

**CITATIONS:** American Ornithologists' Union (AOU), Committee on Classification and Nomenclature. 1983. Check-list of North American Birds. Sixth Edition. American Ornithologists' Union, Allen Press, Inc., Lawrence, Kansas.

Bent, A. C. 1926. Life histories of North American marsh birds. U.S. National Museum Bulletin No. 135. [reprint. 1963. Dover Publications, Inc., New York, New York].

Harrison, C. 1978. A field guide to the nests, eggs and nestlings of North American birds. Collins, Cleveland, Ohio.

Harrison, H.H. 1975. A field guide to bird's nests in the U.S. east of the Mississippi River. Houghton Mifflin Company, Boston, Massachusetts. 257 p.

Harrison, H.H. 1979. A field guide to western birds' nests. Houghton Mifflin Company, Boston. 279 pp.

Helm, R.N. 1994. Purple gallinule. Pages 159-165 in T.S. Tacha and C.E. Braun, eds. Migratory shore and upland game bird management in North America. Allen Press, Lawrence, KS.

Hilty, S.L., and W.L. Brown. 1986. A guide to the birds of Colombia. Princeton University Press, Princeton, New Jersey. 836 pp.

Layne, J.N.; Stallcup, J.A.; Woolfenden, G.E.; McCauley, M.N.; Worley, D.J. 1977. Fish and Wildlife Inventory of the Seven-County Region Included in the Central Florida Phosphate Industry Area-Wide Environmental Impact Study. Volumes I and II. Also avai

Potter, E. F., J. F. Parnell, and R. P. Teulings. 1980. Birds of the Carolinas. Univ. North Carolina Press, Chapel Hill. 408 pp.

Raffaele, H.A. 1983. A guide to the birds of Puerto Rico and the Virgin Islands. Fondo Educativo Interamericano, San Juan, Puerto Rico. 255 pp.

Stiles, F.G., and A.F. Skutch. 1989. A guide to the birds of Costa Rica. Comstock Publ. Associates, Cornell University Press, Ithaca, New York. 511 pp.

Taylor, B. 1998. Rails. A guide to the rails, crakes, gallinules, and coots of the world. New Haven and London: Yale University Press. 600p.

Terres, J.K. 1980. The Audubon Society encyclopedia of North American birds. Alfred A. Knopf, New York.

For more information:: SE-GAP Analysis Project / BaSIC  
127 David Clark Labs  
Dept. of Biology, NCSU  
Raleigh, NC 27695-7617  
(919) 513-2853  
[www.basic.ncsu.edu/segap](http://www.basic.ncsu.edu/segap)

Compiled: 15 September 2011

This data was compiled and/or developed  
by the Southeast GAP Analysis Project at  
The Biodiversity and Spatial Information  
Center, North Carolina State University.