



SOUTHEAST GAP ANALYSIS PROJECT



Species Modeling Report

Pine Warbler

Dendroica pinus

Taxa: Avian

Order: Passeriformes

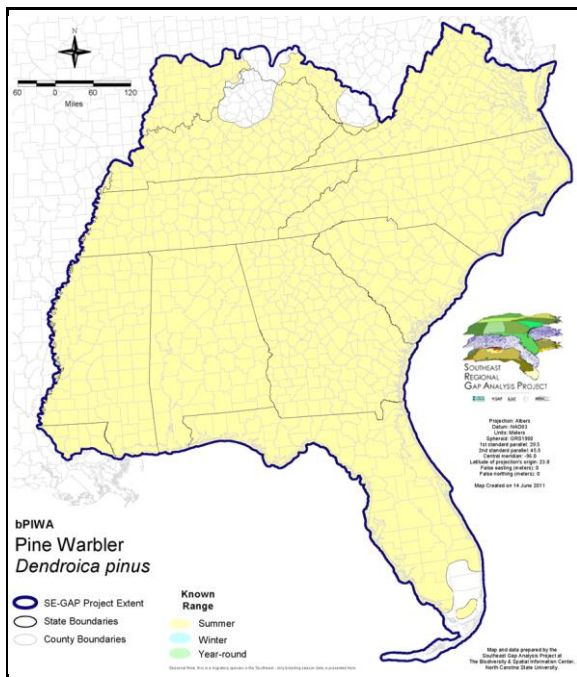
Family: Parulidae

SE-GAP Spp Code: **bPIWA**

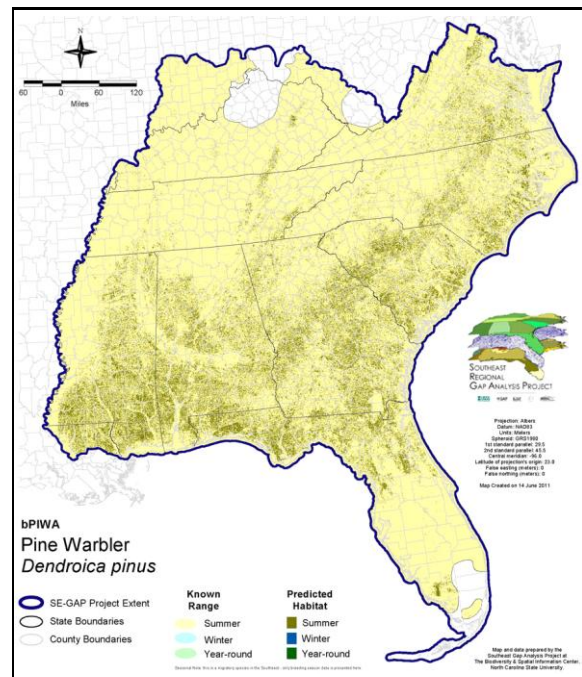
ITIS Species Code: 178914

NatureServe Element Code: ABPBX03170

KNOWN RANGE:



PREDICTED HABITAT:



Range Map Link: http://www.basic.ncsu.edu/segap/datazip/maps/SE_Range_bPIWA.pdf

Predicted Habitat Map Link: http://www.basic.ncsu.edu/segap/datazip/maps/SE_Dist_bPIWA.pdf

GAP Online Tool Link: <http://www.gapservice.ncsu.edu/segap/segap/index2.php?species=bPIWA>

Data Download: http://www.basic.ncsu.edu/segap/datazip/region/vert/bPIWA_se00.zip

PROTECTION STATUS:

Reported on March 14, 2011

Federal Status: ---

State Status: KY (N), KY (N), NJ (S/S), NV (YES), NY (PB), RI (Not Listed), QC (Non suivie)

NS Global Rank: G5

NS State Rank: AL (S5), AR (S4), AZ (SNA), CO (SNA), CT (S4B), CT (S4B), DC (S1B,S1S3N), DE (S5B,S5N), FL (SNR), GA (S5), IA (S1N), IL (S3S4), IN (S3B), KS (SNA), KY (S4S5B), KY (S4S5B), LA (S5), MA (S4B), MD (S4B,S2N), ME (S5B), MI (S5), MN (SNRB), MO (SNRB,SNRN), MS (S5B,S5N), MT (SNA), NC (S5B,S4N), ND (SNA), NE (SNRN), NH (S5B), NJ (S4B,S4N), NM (SNA), NV (SNA), NY (S5), OH (S3S4), OK (S4), PA (S3S4B), RI (S4B), SC (SNR), SD (SNA), TN (S5), TX (S5B), VA (S5), VT (S3B), VT (S3B), WI (S3B), WI (S3B), WV (S2N,S4B), WY (SNA), AB (SNA), BC (SNA), MB (S2B), MB (S2B), NB (S4B), NF (SNA), NS (SNA), ON (S5B), PE (SNA), QC (S4B), SK (SNA)

SUMMARY OF PREDICTED HABITAT BY MANAGMENT AND GAP PROTECTION STATUS:

	US FWS		US Forest Service		Tenn. Valley Author.		US DOD/ACOE	
	ha	%	ha	%	ha	%	ha	%
Status 1	19,964.0	< 1	3,721.0	< 1	0.0	0	0.0	0
Status 2	19,084.1	< 1	62,876.2	< 1	0.0	0	915.8	< 1
Status 3	3.4	< 1	863,006.7	5	2,771.4	< 1	286,490.7	2
Status 4	31.4	< 1	0.0	0	0.0	0	0.0	0
Total	39,083.0	< 1	929,603.8	6	2,771.4	< 1	287,406.5	2
	US Dept. of Energy		US Nat. Park Service		NOAA		Other Federal Lands	
	ha	%	ha	%	ha	%	ha	%
Status 1	0.0	0	23,792.9	< 1	0.0	0	< 0.1	< 1
Status 2	0.0	0	920.3	< 1	143.7	< 1	29.9	< 1
Status 3	43,331.5	< 1	47,631.9	< 1	0.0	0	2,561.1	< 1
Status 4	0.0	0	0.0	0	0.0	0	0.0	0
Total	43,331.5	< 1	72,345.0	< 1	143.7	< 1	2,591.1	< 1
	Native Am. Reserv.		State Park/Hist. Park		State WMA/Gameland		State Forest	
	ha	%	ha	%	ha	%	ha	%
Status 1	0.0	0	211.2	< 1	0.0	0	0.0	0
Status 2	0.0	0	1,526.3	< 1	114,316.7	< 1	5.0	< 1
Status 3	3,835.5	< 1	103,691.2	< 1	34,678.4	< 1	170,213.9	1
Status 4	0.0	0	0.0	0	67,858.7	< 1	31.6	< 1
Total	3,835.5	< 1	105,428.7	< 1	216,853.7	1	170,250.4	1
	State Coastal Reserve		ST Nat.Area/Preserve		Other State Lands		Private Cons. Easemt.	
	ha	%	ha	%	ha	%	ha	%
Status 1	0.0	0	2,349.8	< 1	0.0	0	0.0	0
Status 2	339.8	< 1	10,199.3	< 1	0.0	0	432.4	< 1
Status 3	0.0	0	2,401.2	< 1	11,136.7	< 1	19,423.1	< 1
Status 4	0.0	0	0.0	0	958.1	< 1	0.0	0
Total	339.8	< 1	14,950.4	< 1	12,094.7	< 1	19,855.4	< 1
	Private Land - No Res.		Water		Overall Total			
	ha	%	ha	%	ha	%		
Status 1	0.0	0	0.0	0	50,038.9	< 1		
Status 2	0.0	0	0.0	0	210,789.4	1		
Status 3	387.5	< 1	0.0	0	1,591,564.0	15		
Status 4	13,056,057.5	82	893.3	< 1	13,193,657.8	83		
Total	13,056,445.0	82	893.3	< 1	15,046,050.1	100		

GAP Status 1: An area having permanent protection from conversion of natural land cover and a mandated management plan in operation to maintain a natural state within which disturbance events (of natural type, frequency, and intensity) are allowed to proceed without interference or are mimicked through management.

GAP Status 2: An area having permanent protection from conversion of natural land cover and a mandated management plan in operation to maintain a primarily natural state, but which may receive use or management practices that degrade the quality of existing natural communities.

GAP Status 3: An area having permanent protection from conversion of natural land cover for the majority of the area, but subject to extractive uses of either a broad, low-intensity type or localized intense type. It also confers protection to federally listed endangered and threatened species throughout the area.

GAP Status 4: Lack of irrevocable easement or mandate to prevent conversion of natural habitat types to anthropogenic habitat types. Allows for intensive use throughout the tract. Also includes those tracts for which the existence of such restrictions or sufficient information to establish a higher status is unknown.

PREDICTED HABITAT MODEL(S):

Summer Model:

Habitat Description: A habitat specialist, always found in association with pine, but can occur in mixed forests with as little as 10% pine (Morse 1989). Prefers open stands with a large canopy and little understory (Anderson and Shugart 1974) such as a savannah with many tall, mature trees (Dunn and Garrett 1997). Not often found in pine plantations due to small canopy size of young trees (Nicholson 1997). The highest numbers seem to occur where pure stands of pine are found; less abundant as the proportion of hardwood tree species increases. Birds are rarely found in deciduous forest, scrub, and thickets, except during migration and winter (NatureServe 2005). Within the mid-Atlantic and Southeast pine warblers breed in a variety of pine forest types such as Virginia Pine-pitch pine or oak, longleaf-slash pine, loblolly-shortleaf pine, and pine flatwoods and savannahs (Rodewald et al. 1999, Stevenson & Anderson 1994). They prefer long-leaved varieties of pine (Stevenson & Anderson) and generally do not breed in white stands, pond or sand pine (Schroeder 1982). Amy Silvano 6jun05

***Portions quoted directly from compiled habitat. Amy Silvano 6jun05

Ecosystem classifier: Xeric Uplands & Pine Rocklands, Evergreen (excluding scrub/shrub and juniper mods), Mixed (excluding heath modifier), Hemlock, Montane Pine, Flatwoods (no cypress or treeless) & pine plantations. Amy silvano 6jun05

Contiguous Patch Minimum Size (hectares): 10

Selected Map Units:

Functional Group	Map Unit Name
Anthropogenic	Evergreen Plantations
Forest/Woodland	Allegheny-Cumberland Dry Oak Forest and Woodland - Pine Modifier
Forest/Woodland	Appalachian Hemlock-Hardwood Forest
Forest/Woodland	Appalachian Serpentine Woodland
Forest/Woodland	Atlantic Coastal Plain Fall-Line Sandhills Longleaf Pine Woodland - Loblolly Modifier
Forest/Woodland	Atlantic Coastal Plain Fall-line Sandhills Longleaf Pine Woodland - Open Understory Modifier
Forest/Woodland	Atlantic Coastal Plain Upland Longleaf Pine Woodland
Forest/Woodland	Central Appalachian Oak and Pine Forest
Forest/Woodland	Central Appalachian Pine-Oak Rocky Woodland
Forest/Woodland	East Gulf Coastal Plain Interior Shortleaf Pine-Oak Forest - Mixed Modifier
Forest/Woodland	East Gulf Coastal Plain Interior Shortleaf Pine-Oak Forest - Pine Modifier
Forest/Woodland	East Gulf Coastal Plain Interior Upland Longleaf Pine Woodland - Loblolly Modifier
Forest/Woodland	East Gulf Coastal Plain Interior Upland Longleaf Pine Woodland - Open Understory Modifier
Forest/Woodland	East Gulf Coastal Plain Northern Dry Upland Hardwood Forest - Offsite Pine Modifier
Forest/Woodland	Florida Longleaf Pine Sandhill - Open Understory Modifier
Forest/Woodland	Northeastern Interior Dry Oak Forest - Mixed Modifier
Forest/Woodland	Northeastern Interior Dry Oak Forest - Virginia/Pitch Pine Modifier
Forest/Woodland	South Florida Pine Rockland
Forest/Woodland	Southeastern Interior Longleaf Pine Woodland
Forest/Woodland	Southern Appalachian Low Mountain Pine Forest
Forest/Woodland	Southern Appalachian Montane Pine Forest and Woodland
Forest/Woodland	Southern Piedmont Dry Oak-(Pine) Forest - Loblolly Pine Modifier
Forest/Woodland	Southern Piedmont Dry Oak-(Pine) Forest - Mixed Modifier
Forest/Woodland	Southern Piedmont Dry Oak-Heath Forest - Mixed Modifier
Forest/Woodland	Southern Piedmont Dry Oak-Heath Forest - Virginia/Pitch Pine Modifier
Forest/Woodland	Southern Ridge and Valley Dry Calcareous Forest - Pine Modifier
Wetlands	East Gulf Coastal Plain Jackson Plain Dry Flatwoods - Open Understory Modifier
Wetlands	East Gulf Coastal Plain Jackson Plain Dry Flatwoods - Scrub/Shrub Understory Modifier
Wetlands	East Gulf Coastal Plain Near-Coast Pine Flatwoods - Open Understory Modifier
Wetlands	East Gulf Coastal Plain Near-Coast Pine Flatwoods - Scrub/Shrub Understory Modifier
Wetlands	South Florida Dwarf Cypress Savanna

- CITATIONS:** American Ornithologists' Union (AOU), Committee on Classification and Nomenclature. 1983. Check-list of North American Birds. Sixth Edition. American Ornithologists' Union, Allen Press, Inc., Lawrence, Kansas.
- Anderson, S. H., and H. H. Shugart, Jr. 1974. Habitat selection of breeding birds in an east Tennessee deciduous forest. *Ecology* 55:828-37.
- Barden LS, Brown RD, Matthews JF, Cross RE. 1986. Vegetation structure and bird species diversity in a North Carolina piedmont forest. *Journal of the Elisha Mitchell Scientific Society* 102(1):35-41.
- Bent, A.C. 1953. Life histories of North American wood warblers. U.S. Natl. Mus. Bull. 203. Washington, D.C.
- Conner, R.N., J.G. Dickson, B.A. Locke, and C.A. Segelquist. 1983. Vegetation characteristics important to common songbirds in east Texas (USA). *Wilson Bulletin* 95: 349-361.
- Droege, S., and J.R. Sauer. 1990. North American Breeding Bird Survey, annual summary, 1989. U.S. Fish and Wildlife Service, Biological Report 90(8). 22 pp.
- Dunn, J.L., and K.L. Garrett. 1997. A field guide to warblers of North America. Houghton Mifflin Company, Boston.
- Fussell, J.O. III. 1994. A birder's guide to coastal North Carolina. Chapel Hill and London: The University of North Carolina Press.
- Griscom, L., and A. Sprunt, Jr. 1979. The warblers of America. Doubleday and Co., Garden City, New York. 302 pp.
- Hamel, P. B. 1992. The land manager's guide to the birds of the south. The Nature Conservancy, Chapel Hill, North Carolina. 367 pp + several appendices.
- Harrison, C. 1978. A field guide to the nests, eggs and nestlings of North American birds. Collins, Cleveland, Ohio.
- Harrison, H.H. 1979. A field guide to western birds' nests. Houghton Mifflin Company, Boston. 279 pp.
- Harrison, H.H. 1984. Wood warblers' world. Simon and Schuster, New York. 335 pp.
- Morse, D. H. 1989. American warblers: an ecological and behavioral perspective. Harvard University Press. 384 pp.
- Nicholson CP. 1997. Atlas of the breeding birds of Tennessee. Knoxville: University of Tennessee Press.
- Nolan, V., Jr. 1978. Ecology and behavior of the prairie warbler *DENDROICA DISCOLOR*. American Ornithologists' Union, Ornithological Monographs No. 26. 595 pp.
- Noss, R.F. 1991. Effects of edge and internal patchiness on avian habitat use in an old-growth Florida hammock. *Natural Areas Journal* 11:34-47.
- Palmer-Ball, B.L., Jr. 1996. The Kentucky Breeding Bird Atlas. The University Press of Kentucky, Lexington.
- Potter, E. F., J. F. Parnell, and R. P. Teulings. 1980. Birds of the Carolinas. Univ. North Carolina Press, Chapel Hill. 408 pp.
- Repenning, R. W., and R. F. Labisky. 1985. Effects of even-age timber management on bird communities of the longleaf pine forest in northern Florida. *Journal of Wildlife Management* 49:1088-98.
- Robbins, C. S., D. K. Dawson, and B. A. Dowell. 1989. Habitat area requirements of breeding forest birds of the middle Atlantic states: Wildlife Monographs No. 103.
- Robbins, C.S. 1979. Effect of forest fragmentation on bird populations. Pp. 198-212 in: R.M. DeGraff and K.E. Evans (ed.). Management of north central and northeastern forests for nongame birds. U.S. Dep. Agric. For. Serv., Gen. Tech. Rep. NC-51. 268pp.
- Rodewald, P.G., J.H. Withgott, and K.G. Smith. 1999. Pine warbler (*Dendroica pinus*). In A. Poole and F. Gill, eds., *The Birds of North America*, No. 438. The Academy of Natural Sciences, Philadelphia and The American Ornithologists' Union, Washington, DC.
- Schroeder, R. L. 1985. Habitat suitability index models: Pine Warbler (revised). Biol. Rep. 82(10.28). U.S. Fish and Wildlife Service. 8 pp.
- Schroeder, R.L. 1982. Habitat suitability index models: pine warbler. FWS/OBS-82/10.28. Washington, DC: U.S. Department of Interior, Fish and Wildlife Service. 8 p.
- Simpson MB Jr. 1992. Birds of the Blue Ridge Mountains. Chapel Hill and London: University of North Carolina Press.
- Stevenson, H. M., and B. H. Anderson. 1994. The birdlife of Florida. University Press of Florida, Gainesville. 892 pp.
- Terres, J.K. 1980. The Audubon Society encyclopedia of North American birds. Alfred A. Knopf, New York.
- Whitcomb, R. F., C. S. Robbins, J. F. Lynch, B. L. Whitcomb, M. K. Klimciewicz, and D. Bystrak. 1981. Effects of forest fragmentation on avifauna of the eastern deciduous forest. Pages 125-206 in R. L. Burgess, and B. L. Sharpe (editors). *Forest island dy*
- Wilson, C. W., R. E. Masters, and G. A. Bukenhofer. 1995. Breeding bird response to pine-grassland community restoration for red-cockaded woodpeckers. *Journal of Wildlife Management* 59:56-67.

For more information:: SE-GAP Analysis Project / BaSIC
127 David Clark Labs
Dept. of Biology, NCSU
Raleigh, NC 27695-7617
(919) 513-2853
www.basic.ncsu.edu/segap

Compiled: 15 September 2011

This data was compiled and/or developed
by the Southeast GAP Analysis Project at
The Biodiversity and Spatial Information
Center, North Carolina State University.