



# SOUTHEAST GAP ANALYSIS PROJECT



## Species Modeling Report

### Nelson's Sharp-tailed Sparrow

*Ammodramus nelsoni*

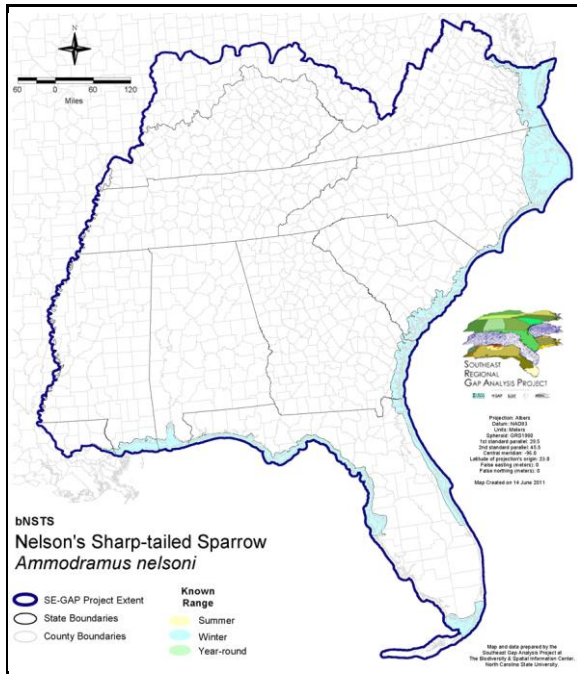
Taxa: Avian  
 Order: Passeriformes  
 Family: Emberizidae

SE-GAP Spp Code: **bNSTS**

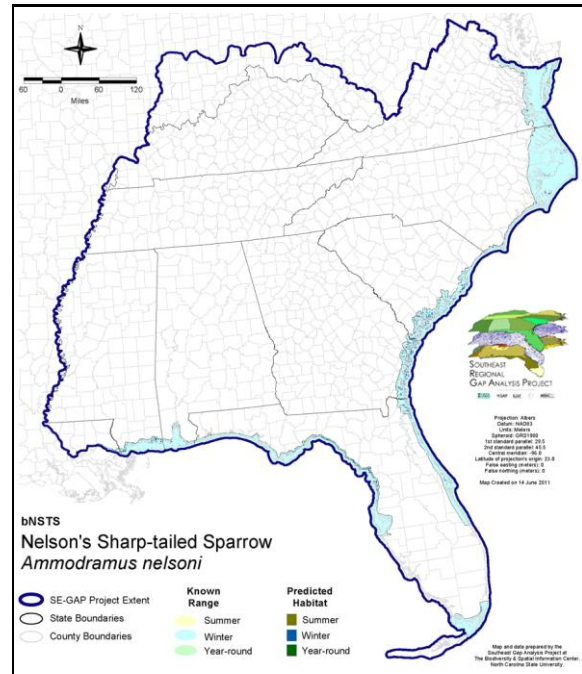
ITIS Species Code: 554031

NatureServe Element Code: ABPBXA0070

#### KNOWN RANGE:



#### PREDICTED HABITAT:



Range Map Link: [http://www.basic.ncsu.edu/segap/datazip/maps/SE\\_Range\\_bNSTS.pdf](http://www.basic.ncsu.edu/segap/datazip/maps/SE_Range_bNSTS.pdf)

Predicted Habitat Map Link: [http://www.basic.ncsu.edu/segap/datazip/maps/SE\\_Dist\\_bNSTS.pdf](http://www.basic.ncsu.edu/segap/datazip/maps/SE_Dist_bNSTS.pdf)

GAP Online Tool Link: <http://www.gapservice.ncsu.edu/segap/segap/index2.php?species=bNSTS>

Data Download: [http://www.basic.ncsu.edu/segap/datazip/region/vert/bNSTS\\_se00.zip](http://www.basic.ncsu.edu/segap/datazip/region/vert/bNSTS_se00.zip)

#### PROTECTION STATUS:

Reported on March 14, 2011

Federal Status: ---

State Status: KY (N), ME (SC), MN (SPC), ND (Level I), NH (SC), NY (PB), RI (Not Listed), WI (SC/M), WI (SC/M), BC (2 (2005)), ON (NAR), QC (Susceptible)

NS Global Rank: G5

NS State Rank: AL (S3N), AR (SNA), CA (SNA), CO (SNA), CT (SNA), DC (SNA), DE (S3B), FL (SNRN), GA (S3), IA (SNR), IL (SNA), IN (SNA), KS (SNA), KY (SNA), LA (S5N), MA (S2N), MA (S2N), MD (SNA), ME (S3S4B), MI (SNRN), MN (S3B), MO (SNA), MS (S3N), MT (S1B), NC (S4N), ND (SU), NE (SNRN), NH (S3B), NJ (SNRN), NV (SNA), NY (SNA), OH (SNA), OK (S1N), PA (SNA), RI (SNA), SC (SNRN), SD (S2B), SD (S2B), TN (SNA), TX (S4N), VA (SNRN), VT (SNA), WA (SNA), WI (S1B), WI (S1B), AB (S4), BC (S2B), MB (S4B), MB (S4B), NB (S3B), NF (SNA), NS (S3B), NT (SNRB), ON (S4B), PE (S3B), QC (S3S4B), SK (S5B)

**SUMMARY OF PREDICTED HABITAT BY MANAGMENT AND GAP PROTECTION STATUS:**

	US FWS		US Forest Service		Tenn. Valley Author.		US DOD/ACOE	
	ha	%	ha	%	ha	%	ha	%
Status 1	46,215.5	7	0.9	< 1	0.0	0	0.0	0
Status 2	29,918.2	4	70.1	< 1	0.0	0	0.0	0
Status 3	705.2	< 1	468.8	< 1	0.0	0	13,282.6	2
Status 4	0.0	0	0.0	0	0.0	0	13.0	< 1
Total	76,838.9	11	539.8	< 1	0.0	0	13,295.5	2
	US Dept. of Energy		US Nat. Park Service		NOAA		Other Federal Lands	
	ha	%	ha	%	ha	%	ha	%
Status 1	0.0	0	1,975.2	< 1	1,002.1	< 1	4,364.9	< 1
Status 2	0.0	0	28,967.2	4	26,834.1	4	0.0	0
Status 3	0.0	0	1,566.0	< 1	0.0	0	0.0	0
Status 4	0.0	0	3.0	0	0.0	0	0.0	0
Total	0.0	0	32,511.6	5	27,836.2	4	4,364.9	< 1
	Native Am. Reserv.		State Park/Hist. Park		State WMA/Gameland		State Forest	
	ha	%	ha	%	ha	%	ha	%
Status 1	0.0	0	1.8	< 1	0.0	0	0.0	0
Status 2	0.0	0	53.1	< 1	52,317.0	7	0.0	0
Status 3	0.0	0	25,079.0	4	4,407.3	< 1	1,766.3	< 1
Status 4	0.0	0	0.0	0	417.5	< 1	0.0	0
Total	0.0	0	25,133.9	4	57,141.8	8	1,766.3	< 1
	State Coastal Reserve		ST Nat.Area/Preserve		Other State Lands		Private Cons. Easemt.	
	ha	%	ha	%	ha	%	ha	%
Status 1	0.0	0	433.5	< 1	0.0	0	0.0	0
Status 2	24,925.6	4	18,191.3	3	0.0	0	0.0	0
Status 3	0.0	0	740.2	< 1	0.0	0	377.8	< 1
Status 4	0.0	0	0.0	0	5.1	< 1	0.0	0
Total	24,925.6	4	19,364.9	3	5.1	< 1	377.8	< 1
	Private Land - No Res.		Water		Overall Total			
	ha	%	ha	%	ha	%	ha	%
Status 1	0.0	2	0.0	0	53,994.1 8			
Status 2	0.8	< 1	0.0	2	181,277.6 26			
Status 3	129.4	< 1	0.0	0	48,522.6 7			
Status 4	402,814.4	58	12,554.6	2	416,225.3 59			
Total	402,944.9	58	12,554.8	2	700,019.6 100			

GAP Status 1: An area having permanent protection from conversion of natural land cover and a mandated management plan in operation to maintain a natural state within which disturbance events (of natural type, frequency, and intensity) are allowed to proceed without interference or are mimicked through management.

GAP Status 2: An area having permanent protection from conversion of natural land cover and a mandated management plan in operation to maintain a primarily natural state, but which may receive use or management practices that degrade the quality of existing natural communities.

GAP Status 3: An area having permanent protection from conversion of natural land cover for the majority of the area, but subject to extractive uses of either a broad, low-intensity type or localized intense type. It also confers protection to federally listed endangered and threatened species throughout the area.

GAP Status 4: Lack of irrevocable easement or mandate to prevent conversion of natural habitat types to anthropogenic habitat types. Allows for intensive use throughout the tract. Also includes those tracts for which the existence of such restrictions or sufficient information to establish a higher status is unknown.

## PREDICTED HABITAT MODEL(S):

### Winter Model:

Habitat Description: Until 1995, Saltmarsh and Nelson's Sharp-tailed Sparrow were considered a single species. Nelson's Sharp-tailed is the only species of the two that is found away from the Atlantic coast. " Most of the Atlantic Coast population winters in coastal cordgrass salt marshes, occasionally in cattail; birds often leave tidal marshes only when forced out by high tides, when they may become concentrated along the shoreline" (quoted directly from Greenlaw and Rising 1994). These two species will have map unit overlaps, with Nelson's being included in additional, geographically appropriate map units. M. Rubino, 12Jan05.

### Selected Map Units:

Functional Group	Map Unit Name
Brackish Tidal Marsh & Wetland	Atlantic Coastal Plain Central Salt and Brackish Tidal Marsh
Brackish Tidal Marsh & Wetland	Atlantic Coastal Plain Embayed Region Tidal Salt and Brackish Marsh
Brackish Tidal Marsh & Wetland	Atlantic Coastal Plain Indian River Lagoon Tidal Marsh
Brackish Tidal Marsh & Wetland	Atlantic Coastal Plain Northern Tidal Salt Marsh
Brackish Tidal Marsh & Wetland	Florida Big Bend Salt-Brackish Tidal Marsh
Brackish Tidal Marsh & Wetland	Mississippi Sound Salt and Brackish Tidal Marsh
Brackish Tidal Marsh & Wetland	South Florida Everglades Sawgrass Marsh
Brackish Tidal Marsh & Wetland	Southwest Florida Perched Barriers Salt Swamp and Lagoon - Marsh Modifier
Coastal Dune & Freshwater Wetland	Atlantic and Gulf Coastal Plain Interdunal Wetland
Coastal Dune & Freshwater Wetland	Atlantic Coastal Plain Northern Dune and Maritime Grassland
Coastal Dune & Freshwater Wetland	Atlantic Coastal Plain Southern Dune and Maritime Grassland
Coastal Dune & Freshwater Wetland	East Gulf Coastal Plain Dune and Coastal Grassland
Coastal Dune & Freshwater Wetland	Southwest Florida Dune and Coastal Grassland
Freshwater Tidal Marsh & Wetland	Atlantic Coastal Plain Central Fresh-Oligohaline Tidal Marsh
Freshwater Tidal Marsh & Wetland	Atlantic Coastal Plain Embayed Region Tidal Freshwater Marsh
Freshwater Tidal Marsh & Wetland	Atlantic Coastal Plain Northern Fresh and Oligohaline Tidal Marsh
Freshwater Tidal Marsh & Wetland	Florida Big Bend Fresh-Oligohaline Tidal Marsh

- CITATIONS:** American Ornithologists' Union (AOU), Committee on Classification and Nomenclature. 1983. Check-list of North American Birds. Sixth Edition. American Ornithologists' Union, Allen Press, Inc., Lawrence, Kansas.
- American Ornithologists' Union (AOU). 1995. Fortieth supplement to the American Ornithologists' Union Check-list of North American Birds. *Auk* 112:819-30.
- Bent, A. C. 1968. Life histories of North American cardinals, grosbeaks, buntings, towhees, finches, sparrows, and allies. *Bull. U.S. Nat. Mus.* 237.
- Carter, M., G. Fenwick, C. Hunter, D. Pashley, D. Petit, J. Price, and J. Trapp. 1996. Watchlist 1996:For the future. *Field Notes* 50(3):238-240.
- DeBenedictus, P. A. 1995. Sharp-tailed sparrow:a parable of field ornithology. *Birding* 27(4):312-314.
- Greenlaw, J. S. 1993. Behavioral and morphological diversification in sharp-tailed sparrows (*AMMODRAMUS CAUDACUTUS*) of the Atlantic coast. *Auk* 110:286-303.
- Greenlaw, J. S. and J. D. Rising. 1994. Sharp-tailed Sparrow. *The Birds of North America*. A. Poole, P. Stettenheim, and F. Gill ed. Philadelphia: The Academy of Natural Sciences; Washington, D.C.: The American Ornithologists Union; 1994; 3 (112).
- Hanowski, J.M., and G.J. Niemi. 1990. An approach for quantifying habitat characteristics for rare wetland birds. Pages 51-56 in Mitchell et al., editors. *Ecosystem management:rare species and significant habitats*. New York State Museum Bulletin 471.
- Harrison, C. 1978. *A field guide to the nests, eggs and nestlings of North American birds*. Collins, Cleveland, Ohio.
- Harrison, H.H. 1979. *A field guide to western birds' nests*. Houghton Mifflin Company, Boston. 279 pp.
- Rising, J. D., and J. C. Avise. 1993. Application of genealogical-concordance principles to the taxonomy and evolutionary history of the sharp-tailed sparrow (*AMMODRAMUS CAUDACUTUS*). *Auk* 110:844-856.
- Sibley, C.G., and B.L. Monroe. 1990. *Distribution and taxonomy of birds of the world*. Yale University Press, New Haven, Connecticut. xxiv + 1111 pp.
- Terres, J.K. 1980. *The Audubon Society encyclopedia of North American birds*. Alfred A. Knopf, New York.
- Zink, R.M., and J.C. Avise. 1990. Patterns of mitochondrial DNA and allozyme evolution in the avian genus *AMMODRAMUS*. *Syst. Zool.* 39:148-161.

For more information:: SE-GAP Analysis Project / BaSIC  
127 David Clark Labs  
Dept. of Biology, NCSU  
Raleigh, NC 27695-7617  
(919) 513-2853  
[www.basic.ncsu.edu/segap](http://www.basic.ncsu.edu/segap)

Compiled: 15 September 2011

This data was compiled and/or developed  
by the Southeast GAP Analysis Project at  
The Biodiversity and Spatial Information  
Center, North Carolina State University.