



# SOUTHEAST GAP ANALYSIS PROJECT



## Species Modeling Report

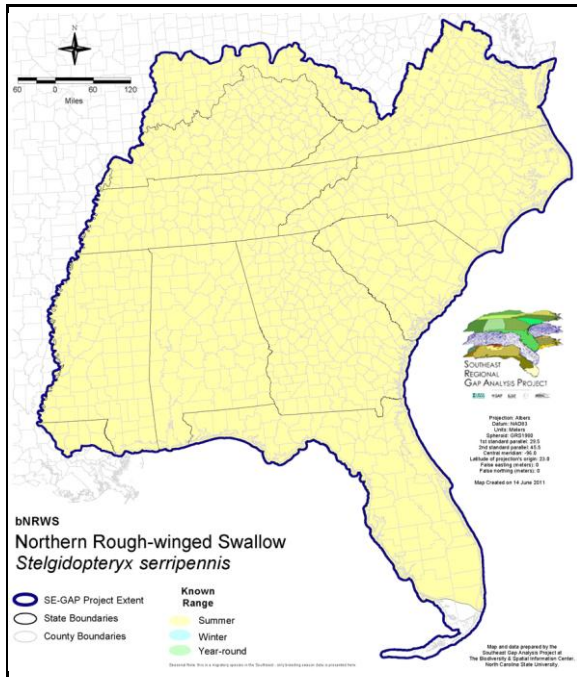
### Northern Rough-winged Swallow

*Stelgidopteryx serripennis*

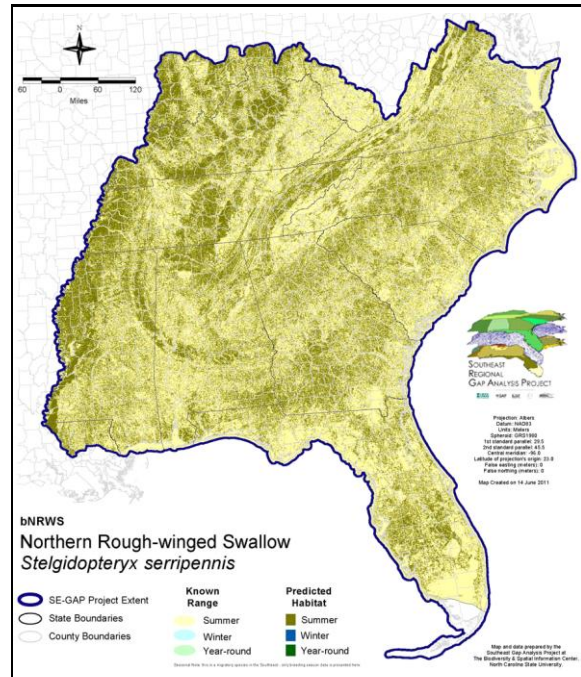
Taxa: Avian  
 Order: Passeriformes  
 Family: Hirundinidae

SE-GAP Spp Code: **bNRWS**  
 ITIS Species Code: 178443  
 NatureServe Element Code: ABPAU07010

#### KNOWN RANGE:



#### PREDICTED HABITAT:



Range Map Link: [http://www.basic.ncsu.edu/segap/datazip/maps/SE\\_Range\\_bNRWS.pdf](http://www.basic.ncsu.edu/segap/datazip/maps/SE_Range_bNRWS.pdf)

Predicted Habitat Map Link: [http://www.basic.ncsu.edu/segap/datazip/maps/SE\\_Dist\\_bNRWS.pdf](http://www.basic.ncsu.edu/segap/datazip/maps/SE_Dist_bNRWS.pdf)

GAP Online Tool Link: <http://www.gapservice.ncsu.edu/segap/segap/index2.php?species=bNRWS>

Data Download: [http://www.basic.ncsu.edu/segap/datazip/region/vert/bNRWS\\_se00.zip](http://www.basic.ncsu.edu/segap/datazip/region/vert/bNRWS_se00.zip)

#### PROTECTION STATUS:

Reported on March 14, 2011

Federal Status: ---

State Status: ID (P), ID (P), KY (N), ME (SC), NJ (S/S), NV (YES), NY (PB), RI (Not Listed), UT (None), BC (4 (2005)), QC (Non suivie)

NS Global Rank: G5

NS State Rank: AK (S3B), AL (S5B), AR (S4B,S4N), AZ (S5), CA (S5), CO (S5), CT (S5B), CT (S5B), DC (S2N,S3B), DE (S5B), FL (SNRB), GA (S5), IA (S5B,S5N), ID (S5B), ID (S5B), IL (S5), IN (S4B), KS (S4B), KY (S5B), LA (S4B), MA (S4B), MD (S4B), ME (S3S4B), MI (S5), MN (SNRB), MO (SNRB), MS (S5B), MS (S5B), MT (S5B), MT (S5B), NC (S4B), NC (S4B), ND (SNRB), NE (SNRB), NH (S5B), NJ (S4B), NM (S4B,S5N), NV (S5B), NY (S5), OH (S5), OK (S4B), OR (S4), PA (S4B), RI (S3B), SC (SNRB), SD (S4B), SD (S4B), TN (S5), TX (S3B,S4N), UT (S4S5B), VA (S5), VT (S4B), VT (S4B), WA (S4S5B), WA (S4S5B), WI (S4B), WI (S4B), WV (S5B), WY (S5B,S5N), AB (S3S4), BC (S4B), MB (S3S4B), MB (S3S4B), NB (S1S2B), NF (SNA), NS (SNA), ON (S4B), PE (SNA), QC (S4B), SK (S5B), YT (S3B)

**SUMMARY OF PREDICTED HABITAT BY MANAGMENT AND GAP PROTECTION STATUS:**

	US FWS		US Forest Service		Tenn. Valley Author.		US DOD/ACOE	
	ha	%	ha	%	ha	%	ha	%
Status 1	12,432.0	< 1	596.4	< 1	0.0	0	0.0	0
Status 2	43,277.1	< 1	14,642.7	< 1	0.0	0	680.9	< 1
Status 3	530.8	< 1	151,098.8	< 1	30,143.6	< 1	218,602.5	< 1
Status 4	22.6	< 1	0.0	0	0.0	0	203.8	< 1
Total	56,262.5	< 1	166,338.0	< 1	30,143.6	< 1	219,487.1	< 1
	US Dept. of Energy		US Nat. Park Service		NOAA		Other Federal Lands	
	ha	%	ha	%	ha	%	ha	%
Status 1	0.0	0	7,441.3	< 1	179.1	< 1	889.2	< 1
Status 2	0.0	0	10,318.7	< 1	4,086.8	< 1	23.7	< 1
Status 3	5,118.8	< 1	32,516.1	< 1	0.0	0	3,918.0	< 1
Status 4	0.0	0	0.0	2	0.0	0	0.0	0
Total	5,118.8	< 1	50,276.2	< 1	4,265.9	< 1	4,830.8	< 1
	Native Am. Reserv.		State Park/Hist. Park		State WMA/Gameland		State Forest	
	ha	%	ha	%	ha	%	ha	%
Status 1	0.0	0	167.4	< 1	10.5	< 1	0.0	0
Status 2	0.0	0	1,156.1	< 1	129,006.4	< 1	58.2	< 1
Status 3	4,407.3	< 1	139,757.2	< 1	35,431.9	< 1	49,890.5	< 1
Status 4	0.0	0	0.0	0	22,951.9	< 1	4.1	< 1
Total	4,407.3	< 1	141,080.7	< 1	187,400.7	< 1	49,952.8	< 1
	State Coastal Reserve		ST Nat.Area/Preserve		Other State Lands		Private Cons. Easemt.	
	ha	%	ha	%	ha	%	ha	%
Status 1	0.0	0	1,023.1	< 1	0.0	0	0.0	0
Status 2	2,335.1	< 1	10,514.9	< 1	2.1	< 1	1,067.0	< 1
Status 3	0.0	0	5,490.6	< 1	14,432.9	< 1	52,349.9	< 1
Status 4	0.0	0	0.0	0	2,372.0	< 1	< 0.1	< 1
Total	2,335.1	< 1	17,028.6	< 1	16,807.0	< 1	53,416.9	< 1
	Private Land - No Res.		Water		Overall Total			
	ha	%	ha	%	ha	%	ha	%
Status 1	0.0	0	0.0	0	22,739.0 < 1			
Status 2	0.0	0	0.0	0	217,169.6 < 1			
Status 3	187.0	< 1	< 0.1	< 1	743,876.1 2			
Status 4	38,545,742.9	97	35,272.2	< 1	38,629,498.8 97			
Total	38,545,929.9	97	35,272.3	< 1	39,613,283.5 100			

GAP Status 1: An area having permanent protection from conversion of natural land cover and a mandated management plan in operation to maintain a natural state within which disturbance events (of natural type, frequency, and intensity) are allowed to proceed without interference or are mimicked through management.

GAP Status 2: An area having permanent protection from conversion of natural land cover and a mandated management plan in operation to maintain a primarily natural state, but which may receive use or management practices that degrade the quality of existing natural communities.

GAP Status 3: An area having permanent protection from conversion of natural land cover for the majority of the area, but subject to extractive uses of either a broad, low-intensity type or localized intense type. It also confers protection to federally listed endangered and threatened species throughout the area.

GAP Status 4: Lack of irrevocable easement or mandate to prevent conversion of natural habitat types to anthropogenic habitat types. Allows for intensive use throughout the tract. Also includes those tracts for which the existence of such restrictions or sufficient information to establish a higher status is unknown.

## PREDICTED HABITAT MODEL(S):

### Summer Model:

Habitat Description: Prefers open areas including open woodlands. Nests predominantly near rocky gorges, shale banks, stony road cuts, railroad embankments, eroded stream margins, other such exposed banks of clay, sand, or gravel. Also common in coastal (marine) harbors, jetties, etc. foraging over nearby waters and marshes (De Jong 1996). M. Rubino, 06jan05.

### Hydrography Mask:

Utilizes flowing water features with buffers of 500m from and 250m into selected water features.

Utilizes open water features with buffers of 500m from and 250m into selected water features.

Utilizes wet vegetation features with buffer of unlimited into selected vegetation features.

### Selected Map Units:

Functional Group	Map Unit Name
Anthropogenic	Bare Sand
Anthropogenic	Bare Soil
Anthropogenic	Developed Open Space
Anthropogenic	Low Intensity Developed
Anthropogenic	Pasture/Hay
Anthropogenic	Quarry/Strip Mine/Gravel Pit
Anthropogenic	Row Crop
Anthropogenic	Successional Grassland/Herbaceous
Anthropogenic	Successional Grassland/Herbaceous (Other)
Anthropogenic	Successional Grassland/Herbaceous (Utility Swath)
Anthropogenic	Successional Shrub/Scrub (Clear Cut)
Anthropogenic	Successional Shrub/Scrub (Other)
Anthropogenic	Successional Shrub/Scrub (Utility Swath)
Coastal Dune & Freshwater Wetland	Atlantic Coastal Plain Northern Dune and Maritime Grassland
Coastal Dune & Freshwater Wetland	Atlantic Coastal Plain Southern Dune and Maritime Grassland
Coastal Dune & Freshwater Wetland	East Gulf Coastal Plain Dune and Coastal Grassland
Coastal Dune & Freshwater Wetland	Southwest Florida Dune and Coastal Grassland
Forest/Woodland	Alabama Ketona Glade and Woodland
Forest/Woodland	Appalachian Shale Barrens
Forest/Woodland	Central Appalachian Alkaline Glade and Woodland
Forest/Woodland	Central Appalachian Pine-Oak Rocky Woodland
Forest/Woodland	Central Interior Highlands Calcareous Glade and Barrens
Forest/Woodland	Central Interior Highlands Dry Acidic Glade and Barrens
Forest/Woodland	Cumberland Sandstone Glade and Barrens
Forest/Woodland	East Gulf Coastal Plain Black Belt Calcareous Prairie and Woodland - Woodland Modifier
Forest/Woodland	East Gulf Coastal Plain Northern Loess Bluff Forest
Forest/Woodland	East Gulf Coastal Plain Southern Loess Bluff Forest
Forest/Woodland	Nashville Basin Limestone Glade
Forest/Woodland	Ridge and Valley Calcareous Valley Bottom Glade and Woodland
Forest/Woodland	Southern and Central Appalachian Mafic Glade and Barrens
Forest/Woodland	Southern Piedmont Glade and Barrens
Prairie	Bluegrass Basin Savanna and Woodland
Prairie	East Gulf Coastal Plain Black Belt Calcareous Prairie and Woodland
Prairie	East Gulf Coastal Plain Black Belt Calcareous Prairie and Woodland - Herbaceous Modifier
Prairie	East Gulf Coastal Plain Jackson Plain Prairie and Barrens
Prairie	East Gulf Coastal Plain Jackson Prairie and Woodland
Prairie	Eastern Highland Rim Prairie and Barrens
Prairie	Eastern Highland Rim Prairie and Barrens - Dry Modifier
Prairie	Florida Dry Prairie
Prairie	Panhandle Florida Limestone Glade
Prairie	Pennyroyal Karst Plain Prairie and Barrens
Prairie	Southern Ridge and Valley Patch Prairie

Prairie	Western Highland Rim Prairie and Barrens
Rock Outcrop	Allegheny-Cumberland Sandstone Box Canyon and Rockhouse
Rock Outcrop	Central Interior Acidic Cliff and Talus
Rock Outcrop	Central Interior Calcareous Cliff and Talus
Rock Outcrop	East Gulf Coastal Plain Dry Chalk Bluff
Rock Outcrop	North-Central Appalachian Acidic Cliff and Talus
Rock Outcrop	North-Central Appalachian Circumneutral Cliff and Talus
Rock Outcrop	Southern Appalachian Montane Cliff
Rock Outcrop	Southern Interior Acid Cliff
Rock Outcrop	Southern Interior Calcareous Cliff
Rock Outcrop	Southern Piedmont Cliff
Water	Open Water (Brackish/Salt)
Water	Open Water (Fresh)
Wetlands	Atlantic Coastal Plain Depression Pondshore
Wetlands	Atlantic Coastal Plain Large Natural Lakeshore
Wetlands	Atlantic Coastal Plain Northern Pondshore
Wetlands	Central Florida Herbaceous Pondshore
Wetlands	Cumberland Riverscour
Wetlands	East Gulf Coastal Plain Northern Depression Pondshore
Wetlands	East Gulf Coastal Plain Southern Depression Pondshore
Wetlands	Southern Coastal Plain Spring-run Stream Aquatic Vegetation
Wetlands	Unconsolidated Shore (Lake/River/Pond)

**CITATIONS:**

American Ornithologists' Union (AOU), Committee on Classification and Nomenclature. 1983. Check-list of North American Birds. Sixth Edition. American Ornithologists' Union, Allen Press, Inc., Lawrence, Kansas.

DeJong, M.J. 1996. Northern rough-winged swallow (*Stelgidopteryx serripennis*). In A. Poole and F. Gill, eds., *The Birds of North America*, No. 234). The Academy of Natural Sciences, Philadelphia and The American Ornithologists' Union, Washington, DC.

Ehrlich, P.R., D.S. Dobkin, and D. Wheye. 1988. *The birder's handbook: a field guide to the natural history of North American birds*. Simon and Shuster, Inc., New York. xxx + 785 pp.

Godfrey, W.E. 1966. *The birds of Canada*. National Museums of Canada. Ottawa. 428 pp.

Hagan, J.M., III, and D.W. Johnston, editors. 1992. *Ecology and conservation of neotropical migrant landbirds*. Smithsonian Institution Press, Washington, D.C. xiii + 609 pp.

Harrison, C. 1978. *A field guide to the nests, eggs and nestlings of North American birds*. Collins, Cleveland, Ohio.

Johnson, N. K. 1994. Old-school taxonomy versus modern biosystematics: species-level decisions in *STELGIDOPTERYX* and *EMPIDONAX*. *Auk* 111:773-780.

Kaufman K. 1996. *Lives of North American Birds*. Boston, New York: Houghton Mifflin Company.

Lunk, W.A. 1962. The rough-winged swallow *STELGIDOPTERYX RUFICOLLIS* (Veillot) [= *S. SERRIPENNIS*] - A study based on its breeding biology in Michigan. 241 pp.

Nicholson CP. 1997. *Atlas of the breeding birds of Tennessee*. Knoxville: University of Tennessee Press.

Oberholser, H.C. 1974. *The bird life of Texas*. 2 vols. Univ. of Texas Press, Austin.

Phillips, A. R. 1994. The Known Birds of North and Middle America versus the current AOU list. *Auk* 111:770-773.

Phillips, A.R. 1986. *The known birds of North and Middle America: distribution and variations, migrations, changes, hybrids, etc.* Part I, Hirundinidae to Mimidae, Certhiidae. Published by the author, Denver, Colorado. lxi + 259 pp.

Potter, E. F., J. F. Parnell, and R. P. Teulings. 1980. *Birds of the Carolinas*. Univ. North Carolina Press, Chapel Hill. 408 pp.

Robbins, C.S., D. Bystrak, and P.H. Geissler. 1986. *The Breeding Bird Survey: its first fifteen years*. U.S. Fish and Wildlife Serv. Resource Publ. 157. iii + 196 pp.

Sauer, J.R., and S. Droege. 1992. Geographical patterns in population trends of neotropical migrants in North America. Pages 26-42 in J.M. Hagan III and D.W. Johnston, editors. *Ecology and conservation of neotropical migrant landbirds*. Smithsonian Institution Press, Washington, D.C.

Sheldon, F. H., and D. W. Winkler. 1993. Intergeneric phylogenetic relationships of swallows estimated by DNA-DNA hybridization. *Auk* 110:798-824.

Stiles, F.G., and A.F. Skutch. 1989. *A guide to the birds of Costa Rica*. Comstock Publ. Associates, Cornell University Press, Ithaca, New York. 511 pp.

Terres, J.K. 1980. The Audubon Society encyclopedia of North American birds. Alfred A. Knopf, New York.

Turner, A., and C. Rose. 1989. Swallows and martins an identification guide. Houghton Mifflin Co., Boston.

---

For more information:: SE-GAP Analysis Project / BaSIC  
127 David Clark Labs  
Dept. of Biology, NCSU  
Raleigh, NC 27695-7617  
(919) 513-2853  
[www.basic.ncsu.edu/segap](http://www.basic.ncsu.edu/segap)

Compiled: 15 September 2011

This data was compiled and/or developed  
by the Southeast GAP Analysis Project at  
The Biodiversity and Spatial Information  
Center, North Carolina State University.