



SOUTHEAST GAP ANALYSIS PROJECT



Species Modeling Report

Mottled Duck

Anas fulvigula

Taxa: Avian

Order: Anseriformes

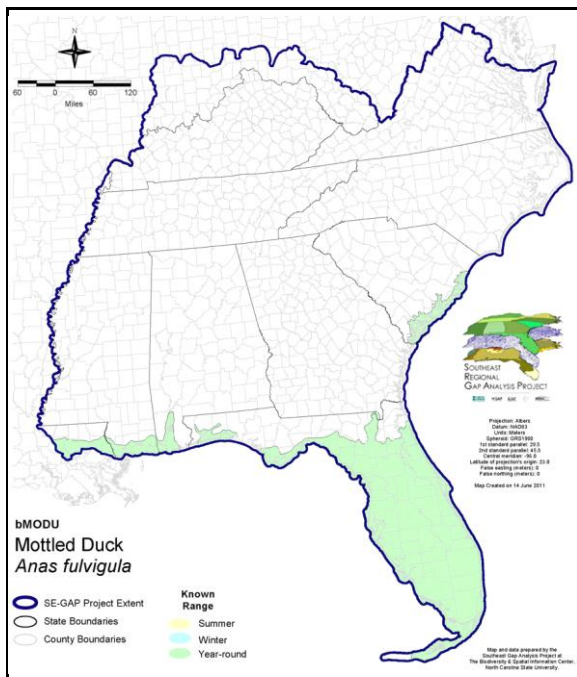
Family: Anatidae

SE-GAP Spp Code: **bMODU**

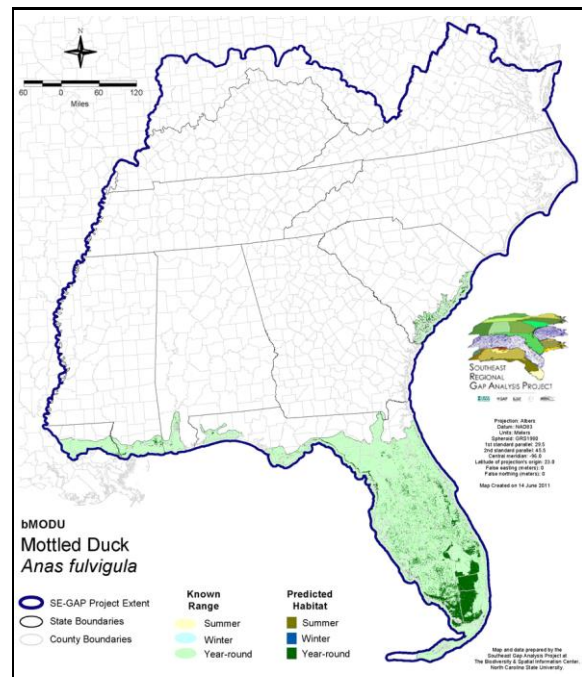
ITIS Species Code: 175070

NatureServe Element Code: ABNJB10050

KNOWN RANGE:



PREDICTED HABITAT:



Range Map Link: http://www.basic.ncsu.edu/segap/datazip/maps/SE_Range_bMODU.pdf

Predicted Habitat Map Link: http://www.basic.ncsu.edu/segap/datazip/maps/SE_Dist_bMODU.pdf

GAP Online Tool Link: <http://www.gapservice.ncsu.edu/segap/segap/index2.php?species=bMODU>

Data Download: http://www.basic.ncsu.edu/segap/datazip/region/vert/bMODU_se00.zip

PROTECTION STATUS:

Reported on March 14, 2011

Federal Status: ---

State Status: AL (GB)

NS Global Rank: G4

NS State Rank: AL (S2N,S3B), FL (SNR), GA (SNA), KS (S1B), KS (S1B), LA (S4), MS (S2B,S4N), NC (SNA), NE (SNA), NM (SNA), SC (SNR), TX (S4B)

SUMMARY OF PREDICTED HABITAT BY MANAGMENT AND GAP PROTECTION STATUS:

	US FWS		US Forest Service		Tenn. Valley Author.		US DOD/ACOE	
	ha	%	ha	%	ha	%	ha	%
Status 1	45,067.0	2	0.0	0	0.0	0	0.0	0
Status 2	13,973.3	< 1	458.5	< 1	0.0	0	0.0	0
Status 3	0.0	0	2,097.7	< 1	0.0	0	11,453.6	< 1
Status 4	0.0	0	0.0	0	0.0	0	0.0	0
Total	59,040.3	3	2,556.2	< 1	0.0	0	11,453.6	< 1
	US Dept. of Energy		US Nat. Park Service		NOAA		Other Federal Lands	
	ha	%	ha	%	ha	%	ha	%
Status 1	0.0	0	350,236.2	17	704.8	< 1	1,553.2	< 1
Status 2	0.0	0	2,260.4	< 1	35,258.2	2	11.3	< 1
Status 3	0.0	0	129,585.2	6	0.0	0	12.8	< 1
Status 4	0.0	0	2.0	0	0.0	0	0.0	0
Total	0.0	0	482,084.6	23	35,963.0	2	1,577.3	< 1
	Native Am. Reserv.		State Park/Hist. Park		State WMA/Gameland		State Forest	
	ha	%	ha	%	ha	%	ha	%
Status 1	0.0	0	30.6	< 1	0.0	0	0.0	0
Status 2	0.0	0	67.9	< 1	369,327.2	18	0.0	0
Status 3	0.0	0	174,444.8	8	2,191.0	< 1	17,691.8	< 1
Status 4	0.0	0	0.0	0	463.5	< 1	0.0	0
Total	0.0	0	174,543.3	8	371,981.7	18	17,691.8	< 1
	State Coastal Reserve		ST Nat.Area/Preserve		Other State Lands		Private Cons. Easemt.	
	ha	%	ha	%	ha	%	ha	%
Status 1	0.0	0	432.9	< 1	0.0	0	0.0	0
Status 2	14,578.2	< 1	10,739.0	< 1	0.0	0	507.2	< 1
Status 3	0.0	0	4,743.3	< 1	618.9	< 1	14,624.2	< 1
Status 4	0.0	0	0.0	0	2.3	< 1	0.0	0
Total	14,578.2	< 1	15,915.2	< 1	621.2	< 1	15,131.4	< 1
	Private Land - No Res.		Water		Overall Total			
	ha	%	ha	%	ha	%		
Status 1	0.0	8	0.0	0	398,024.8	19		
Status 2	0.8	< 1	0.0	8	447,182.2	22		
Status 3	129.2	< 1	0.0	0	357,592.4	17		
Status 4	825,978.6	40	44,126.6	2	871,037.4	42		
Total	826,108.7	40	44,126.8	2	2,073,836.8	100		

GAP Status 1: An area having permanent protection from conversion of natural land cover and a mandated management plan in operation to maintain a natural state within which disturbance events (of natural type, frequency, and intensity) are allowed to proceed without interference or are mimicked through management.

GAP Status 2: An area having permanent protection from conversion of natural land cover and a mandated management plan in operation to maintain a primarily natural state, but which may receive use or management practices that degrade the quality of existing natural communities.

GAP Status 3: An area having permanent protection from conversion of natural land cover for the majority of the area, but subject to extractive uses of either a broad, low-intensity type or localized intense type. It also confers protection to federally listed endangered and threatened species throughout the area.

GAP Status 4: Lack of irrevocable easement or mandate to prevent conversion of natural habitat types to anthropogenic habitat types. Allows for intensive use throughout the tract. Also includes those tracts for which the existence of such restrictions or sufficient information to establish a higher status is unknown.

PREDICTED HABITAT MODEL(S):

Year-round Model:

Habitat Description: Mottled ducks can be found inhabiting nontidal, brackish, freshwater, and occasionally saltwater coastal marshes (Stevenson and Anderson 1994, Moorman and Gray 1994). However, they are also commonly found in flooded agricultural fields adjacent to these coastal marshes (Stevenson & Anderson 1994). Most habitat for this species is restricted to coastal lowlands containing some cattail or tule/tidal marsh vegetation (Anderson 1981). Amy Silvano 01Sept05

Ecosystem Classifiers: Open Water, Coastal, Brackish, and Freshwater marshes, Depressional, Floodplain/Riparian (herb modifiers only). Amy Silvano 01Sept05

Hydrography Mask:

- Utilizes flowing water features with buffers of 120m from and 60m into selected water features.
- Utilizes open water features with buffers of 120m from and 60m into selected water features.
- Utilizes wet vegetation features with buffers of 120m from and unlimited into selected vegetation features.

Selected Map Units:

Functional Group	Map Unit Name
Brackish Tidal Marsh & Wetland	Atlantic Coastal Plain Central Salt and Brackish Tidal Marsh
Brackish Tidal Marsh & Wetland	Atlantic Coastal Plain Embayed Region Tidal Salt and Brackish Marsh
Brackish Tidal Marsh & Wetland	Atlantic Coastal Plain Southern Tidal Wooded Swamp
Brackish Tidal Marsh & Wetland	East Gulf Coastal Plain Tidal Wooded Swamp
Brackish Tidal Marsh & Wetland	Florida Big Bend Salt-Brackish Tidal Marsh
Brackish Tidal Marsh & Wetland	Mississippi Sound Salt and Brackish Tidal Marsh
Brackish Tidal Marsh & Wetland	South Florida Everglades Sawgrass Marsh
Brackish Tidal Marsh & Wetland	South Florida Mangrove Swamp
Brackish Tidal Marsh & Wetland	Southwest Florida Perched Barriers Salt Swamp and Lagoon - Mangrove Modifier
Brackish Tidal Marsh & Wetland	Southwest Florida Perched Barriers Salt Swamp and Lagoon - Marsh Modifier
Coastal Dune & Freshwater Wetland	Atlantic and Gulf Coastal Plain Interdunal Wetland
Freshwater Tidal Marsh & Wetland	Atlantic Coastal Plain Central Fresh-Oligohaline Tidal Marsh
Freshwater Tidal Marsh & Wetland	Atlantic Coastal Plain Embayed Region Tidal Freshwater Marsh
Freshwater Tidal Marsh & Wetland	Florida Big Bend Fresh-Oligohaline Tidal Marsh
Water	Open Water (Brackish/Salt)
Water	Open Water (Fresh)
Wetlands	Atlantic Coastal Plain Blackwater Stream Floodplain Forest - Herbaceous Modifier
Wetlands	Atlantic Coastal Plain Depression Pondshore
Wetlands	Central Florida Herbaceous Pondshore
Wetlands	Central Florida Herbaceous Seep
Wetlands	East Gulf Coastal Plain Large River Floodplain Forest - Herbaceous Modifier
Wetlands	East Gulf Coastal Plain Southern Depression Pondshore
Wetlands	Floridian Highlands Freshwater Marsh
Wetlands	Lower Mississippi River Bottomland Depressions - Herbaceous Modifier
Wetlands	South Florida Freshwater Slough and Gator Hole
Wetlands	South Florida Pond-Apple/Popash Slough
Wetlands	South Florida Willow Head
Wetlands	Southern Coastal Plain Herbaceous Seepage Bog
Wetlands	Southern Coastal Plain Seepage Swamp and Baygall

Selected Secondary Map Units within 250m of Primary Map Units:

Functional Group	Map Unit Name
Anthropogenic	Row Crop

CITATIONS: Anderson, S. H. 1981. Correlating habitat variables and birds. *Studies in Avian Biology*. 6:538-542.

Anderson, Stanley H., Chandler S Robbins and Janet R Partelow. 1981. *Synthesis and Evaluation of Avian Population and Habitat Data for Alabama*. Final Project Report Performed for Eastern Energy and Land Use Team, Office of Biological Services, Fish and

Moorman, T.T. and P.N. Gray. 1994. Mottled Duck (*Anas fulvigula*). In *The Birds of North America*, No. 81 (A. Poole and F. Gill, eds.). The Academy of Natrual Sciences, Philadelphia, PA, and The American Ornithologists'Union, Washington, D.C.

Stevenson, H. M., and B. H. Anderson. 1994. *The birdlife of Florida*. University Press of Florida, Gainesville. 892 pp.

For more information:: SE-GAP Analysis Project / BaSIC
127 David Clark Labs
Dept. of Biology, NCSU
Raleigh, NC 27695-7617
(919) 513-2853
www.basic.ncsu.edu/segap

Compiled: 15 September 2011

This data was compiled and/or developed
by the Southeast GAP Analysis Project at
The Biodiversity and Spatial Information
Center, North Carolina State University.