



# SOUTHEAST GAP ANALYSIS PROJECT



## Species Modeling Report

### Limpkin

*Aramus guarauna*

Taxa: Avian

Order: Gruiformes

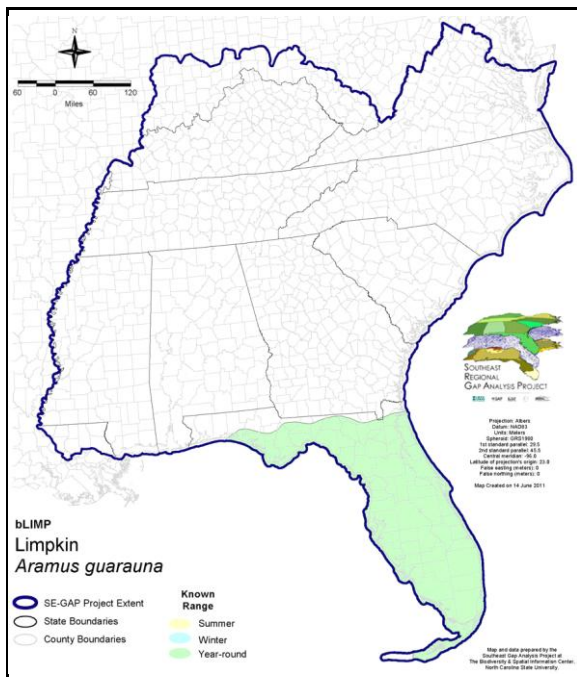
Family: Aramidae

SE-GAP Spp Code: **bLIMP**

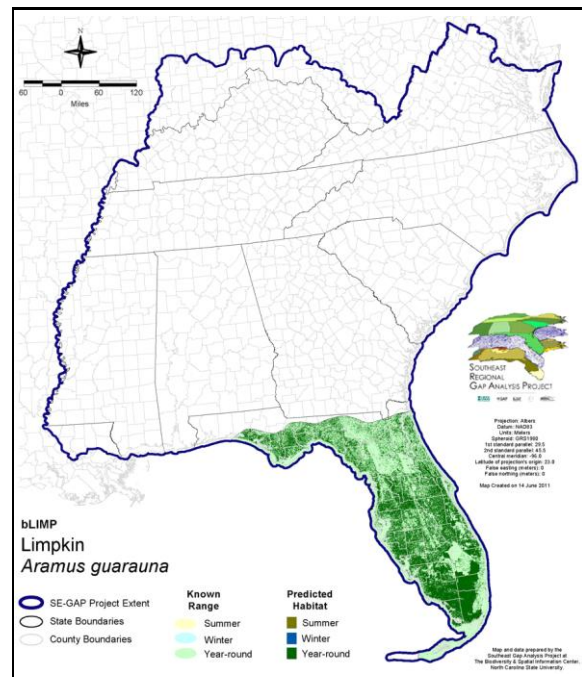
ITIS Species Code: 176197

NatureServe Element Code: ABNMJ01010

#### KNOWN RANGE:



#### PREDICTED HABITAT:



Range Map Link: [http://www.basic.ncsu.edu/segap/datazip/maps/SE\\_Range\\_bLIMP.pdf](http://www.basic.ncsu.edu/segap/datazip/maps/SE_Range_bLIMP.pdf)

Predicted Habitat Map Link: [http://www.basic.ncsu.edu/segap/datazip/maps/SE\\_Dist\\_bLIMP.pdf](http://www.basic.ncsu.edu/segap/datazip/maps/SE_Dist_bLIMP.pdf)

GAP Online Tool Link: <http://www.gapservice.ncsu.edu/segap/segap/index2.php?species=bLIMP>

Data Download: [http://www.basic.ncsu.edu/segap/datazip/region/vert/bLIMP\\_se00.zip](http://www.basic.ncsu.edu/segap/datazip/region/vert/bLIMP_se00.zip)

#### PROTECTION STATUS:

Reported on March 14, 2011

Federal Status: ---

State Status: FL (SSC)

NS Global Rank: G5

NS State Rank: AL (SNA), FL (S3), GA (S1S2), IL (SNA), MD (SNA), MS (SNA), NC (SNA), TX (SNA), VA (SNA), NS (SNA)

**SUMMARY OF PREDICTED HABITAT BY MANAGMENT AND GAP PROTECTION STATUS:**

|          | US FWS                 |     | US Forest Service     |     | Tenn. Valley Author. |     | US DOD/ACOE           |     |
|----------|------------------------|-----|-----------------------|-----|----------------------|-----|-----------------------|-----|
|          | ha                     | %   | ha                    | %   | ha                   | %   | ha                    | %   |
| Status 1 | 34,779.2               | < 1 | 120.6                 | < 1 | 0.0                  | 0   | 0.0                   | 0   |
| Status 2 | 18,984.4               | < 1 | 26,563.7              | < 1 | 0.0                  | 0   | 0.0                   | 0   |
| Status 3 | 0.0                    | 0   | 154,688.7             | 2   | 0.0                  | 0   | 31,698.2              | < 1 |
| Status 4 | 0.0                    | 0   | 0.0                   | 0   | 0.0                  | 0   | 0.0                   | 0   |
| Total    | 53,763.7               | < 1 | 181,373.0             | 3   | 0.0                  | 0   | 31,698.2              | < 1 |
|          | US Dept. of Energy     |     | US Nat. Park Service  |     | NOAA                 |     | Other Federal Lands   |     |
|          | ha                     | %   | ha                    | %   | ha                   | %   | ha                    | %   |
| Status 1 | 0.0                    | 0   | 362,645.8             | 5   | 0.0                  | 0   | 8,464.4               | < 1 |
| Status 2 | 0.0                    | 0   | 3,173.0               | < 1 | 12,062.5             | < 1 | 77.1                  | < 1 |
| Status 3 | 0.0                    | 0   | 270,295.1             | 4   | 0.0                  | 0   | 0.0                   | 0   |
| Status 4 | 0.0                    | 0   | 0.0                   | 0   | 0.0                  | 0   | 0.0                   | 0   |
| Total    | 0.0                    | 0   | 636,113.9             | 9   | 12,062.5             | < 1 | 8,541.5               | < 1 |
|          | Native Am. Reserv.     |     | State Park/Hist. Park |     | State WMA/Gameland   |     | State Forest          |     |
|          | ha                     | %   | ha                    | %   | ha                   | %   | ha                    | %   |
| Status 1 | 0.0                    | 0   | 0.0                   | 0   | 0.0                  | 0   | 0.0                   | 0   |
| Status 2 | 0.0                    | 0   | 108.0                 | < 1 | 481,369.3            | 7   | 0.0                   | 0   |
| Status 3 | 0.0                    | 0   | 488,288.9             | 7   | 161.2                | < 1 | 169,883.3             | 3   |
| Status 4 | 0.0                    | 0   | < 0.1                 | < 1 | 0.0                  | 0   | 0.0                   | 0   |
| Total    | 0.0                    | 0   | 488,397.0             | 7   | 481,530.5            | 7   | 169,883.3             | 3   |
|          | State Coastal Reserve  |     | ST Nat.Area/Preserve  |     | Other State Lands    |     | Private Cons. Easemt. |     |
|          | ha                     | %   | ha                    | %   | ha                   | %   | ha                    | %   |
| Status 1 | 0.0                    | 0   | 0.0                   | 0   | 0.0                  | 0   | 0.0                   | 0   |
| Status 2 | 172.3                  | < 1 | 3,649.8               | < 1 | 0.0                  | 0   | 1,815.6               | < 1 |
| Status 3 | 0.0                    | 0   | 18,443.3              | < 1 | 7,434.7              | < 1 | 101,279.9             | 2   |
| Status 4 | 0.0                    | 0   | 0.0                   | 0   | 167.1                | < 1 | < 0.1                 | < 1 |
| Total    | 172.3                  | < 1 | 22,093.0              | < 1 | 7,601.9              | < 1 | 103,095.5             | 2   |
|          | Private Land - No Res. |     | Water                 |     | Overall Total        |     |                       |     |
|          | ha                     | %   | ha                    | %   | ha                   | %   | ha                    | %   |
| Status 1 | 0.0                    | 0   | 0.0                   | 0   | 406,010.1 6          |     |                       |     |
| Status 2 | 0.0                    | 0   | 0.0                   | 0   | 547,975.6 8          |     |                       |     |
| Status 3 | < 0.1                  | < 1 | 1.0                   | < 1 | 1,242,174.2 21       |     |                       |     |
| Status 4 | 4,353,984.5            | 65  | 34,746.0              | < 1 | 4,388,897.8 65       |     |                       |     |
| Total    | 4,353,984.5            | 65  | 34,747.0              | < 1 | 6,585,057.7 100      |     |                       |     |

GAP Status 1: An area having permanent protection from conversion of natural land cover and a mandated management plan in operation to maintain a natural state within which disturbance events (of natural type, frequency, and intensity) are allowed to proceed without interference or are mimicked through management.

GAP Status 2: An area having permanent protection from conversion of natural land cover and a mandated management plan in operation to maintain a primarily natural state, but which may receive use or management practices that degrade the quality of existing natural communities.

GAP Status 3: An area having permanent protection from conversion of natural land cover for the majority of the area, but subject to extractive uses of either a broad, low-intensity type or localized intense type. It also confers protection to federally listed endangered and threatened species throughout the area.

GAP Status 4: Lack of irrevocable easement or mandate to prevent conversion of natural habitat types to anthropogenic habitat types. Allows for intensive use throughout the tract. Also includes those tracts for which the existence of such restrictions or sufficient information to establish a higher status is unknown.

## PREDICTED HABITAT MODEL(S):

### Year-round Model:

Habitat Description: Limpkins nest in sawgrass or loose mass of leaves just above water, in vines growing over shrubs along streams, or in bushes or trees along deeper streams (Terres 1980).

Swampy forest, marshes, mangroves are also used in addition to open freshwater marshes, pond and river margins (Stiles and Skutch 1989). (BREEDING?)

Quoted directly from existing state habitat notes - K. Cook, 16Feb05

### Hydrography Mask:

Freshwater Only

Utilizes open water features with buffer of 250m from selected water features.

Utilizes wet vegetation features with buffers of 250m from and unlimited into selected vegetation features.

### Selected Map Units:

| Functional Group                  | Map Unit Name  |
|-----------------------------------|--|
| Anthropogenic                     | Developed Open Space   |
| Anthropogenic                     | Low Intensity Developed  |
| Anthropogenic                     | Pasture/Hay  |
| Anthropogenic                     | Row Crop   |
| Brackish Tidal Marsh & Wetland    | Atlantic Coastal Plain Embayed Region Tidal Salt and Brackish Marsh                        |
| Brackish Tidal Marsh & Wetland    | Atlantic Coastal Plain Southern Tidal Wooded Swamp   |
| Brackish Tidal Marsh & Wetland    | East Gulf Coastal Plain Tidal Wooded Swamp   |
| Brackish Tidal Marsh & Wetland    | South Florida Everglades Sawgrass Marsh  |
| Brackish Tidal Marsh & Wetland    | South Florida Mangrove Swamp   |
| Coastal Dune & Freshwater Wetland | Atlantic and Gulf Coastal Plain Interdunal Wetland   |
| Freshwater Tidal Marsh & Wetland  | Atlantic Coastal Plain Central Fresh-Oligohaline Tidal Marsh                               |
| Freshwater Tidal Marsh & Wetland  | Atlantic Coastal Plain Embayed Region Tidal Freshwater Marsh                               |
| Freshwater Tidal Marsh & Wetland  | Atlantic Coastal Plain Northern Fresh and Oligohaline Tidal Marsh                          |
| Freshwater Tidal Marsh & Wetland  | Florida Big Bend Fresh-Oligohaline Tidal Marsh   |
| Wetlands                          | Atlantic Coastal Plain Blackwater Stream Floodplain Forest - Forest Modifier               |
| Wetlands                          | Atlantic Coastal Plain Blackwater Stream Floodplain Forest - Herbaceous Modifier           |
| Wetlands                          | Atlantic Coastal Plain Brownwater Stream Floodplain Forest                                 |
| Wetlands                          | Atlantic Coastal Plain Clay-Based Carolina Bay Herbaceous Wetland                          |
| Wetlands                          | Atlantic Coastal Plain Large Natural Lakeshore   |
| Wetlands                          | Atlantic Coastal Plain Nonriverine Swamp and Wet Hardwood Forest - Taxodium/Nyssa Modifier |
| Wetlands                          | Atlantic Coastal Plain Nonriverine Swamp and Wet Hardwood Forest - Oak Dominated Modifier  |
| Wetlands                          | Atlantic Coastal Plain Northern Wet Longleaf Pine Savanna and Flatwoods                    |
| Wetlands                          | Atlantic Coastal Plain Sandhill Seep   |
| Wetlands                          | Atlantic Coastal Plain Small Blackwater River Floodplain Forest                            |
| Wetlands                          | Atlantic Coastal Plain Small Brownwater River Floodplain Forest                            |
| Wetlands                          | Atlantic Coastal Plain Southern Wet Pine Savanna and Flatwoods                             |
| Wetlands                          | Atlantic Coastal Plain Streamhead Seepage Swamp, Pocosin, and Baygall                      |
| Wetlands                          | Central Florida Herbaceous Seep  |
| Wetlands                          | Central Florida Pine Flatwoods   |
| Wetlands                          | East Gulf Coastal Plain Large River Floodplain Forest - Forest Modifier                    |
| Wetlands                          | East Gulf Coastal Plain Large River Floodplain Forest - Herbaceous Modifier                |
| Wetlands                          | East Gulf Coastal Plain Near-Coast Pine Flatwoods - Open Understory Modifier               |
| Wetlands                          | East Gulf Coastal Plain Near-Coast Pine Flatwoods - Scrub/Shrub Understory Modifier        |
| Wetlands                          | East Gulf Coastal Plain Northern Depression Pondshore                                      |
| Wetlands                          | East Gulf Coastal Plain Small Stream and River Floodplain Forest                           |
| Wetlands                          | East Gulf Coastal Plain Southern Depression Pondshore                                      |
| Wetlands                          | East Gulf Coastal Plain Treeless Savanna and Wet Prairie                                   |
| Wetlands                          | Floridian Highlands Freshwater Marsh   |

|          |   |
|----------|---|
| Wetlands | South Florida Bayhead Swamp                               |
| Wetlands | South Florida Cypress Dome                                |
| Wetlands | South Florida Dwarf Cypress Savanna                       |
| Wetlands | South Florida Freshwater Slough and Gator Hole            |
| Wetlands | South Florida Pine Flatwoods                              |
| Wetlands | South Florida Pond-Apple/Popash Slough                    |
| Wetlands | South Florida Wet Marl Prairie                            |
| Wetlands | South Florida Willow Head                                 |
| Wetlands | Southern Coastal Plain Blackwater River Floodplain Forest |
| Wetlands | Southern Coastal Plain Herbaceous Seepage Bog             |
| Wetlands | Southern Coastal Plain Hydric Hammock                     |
| Wetlands | Southern Coastal Plain Nonriverine Basin Swamp            |
| Wetlands | Southern Coastal Plain Nonriverine Cypress Dome           |
| Wetlands | Southern Coastal Plain Seepage Swamp and Baygall          |

**CITATIONS:** American Ornithologists' Union (AOU), Committee on Classification and Nomenclature. 1983. Check-list of North American Birds. Sixth Edition. American Ornithologists' Union, Allen Press, Inc., Lawrence, Kansas.

Bent, A. C. 1926. Life histories of North American marsh birds. U.S. National Museum Bulletin No. 135. [reprint. 1963. Dover Publications, Inc., New York, New York].

Carter, M., G. Fenwick, C. Hunter, D. Pashley, D. Petit, J. Price, and J. Trapp. 1996. Watchlist 1996:For the future. Field Notes 50(3):238-240.

Harrison, C. 1978. A field guide to the nests, eggs and nestlings of North American birds. Collins, Cleveland, Ohio.

National Geographic Society (NGS). 1983. Field guide to the birds of North America. National Geographic Society, Washington, D.C.

Raffaele, H.A. 1983. A guide to the birds of Puerto Rico and the Virgin Islands. Fondo Educativo Interamericano, San Juan, Puerto Rico. 255 pp.

Stiles, F.G., and A.F. Skutch. 1989. A guide to the birds of Costa Rica. Comstock Publ. Associates, Cornell University Press, Ithaca, New York. 511 pp.

Terres, J.K. 1980. The Audubon Society encyclopedia of North American birds. Alfred A. Knopf, New York.

For more information:: SE-GAP Analysis Project / BaSIC  
 127 David Clark Labs  
 Dept. of Biology, NCSU  
 Raleigh, NC 27695-7617  
 (919) 513-2853  
[www.basic.ncsu.edu/segap](http://www.basic.ncsu.edu/segap)

Compiled: 15 September 2011

This data was compiled and/or developed by the Southeast GAP Analysis Project at The Biodiversity and Spatial Information Center, North Carolina State University.