



# SOUTHEAST GAP ANALYSIS PROJECT



## Species Modeling Report

### Least Bittern

*Ixobrychus exilis*

Taxa: Avian

Order: Ciconiiformes

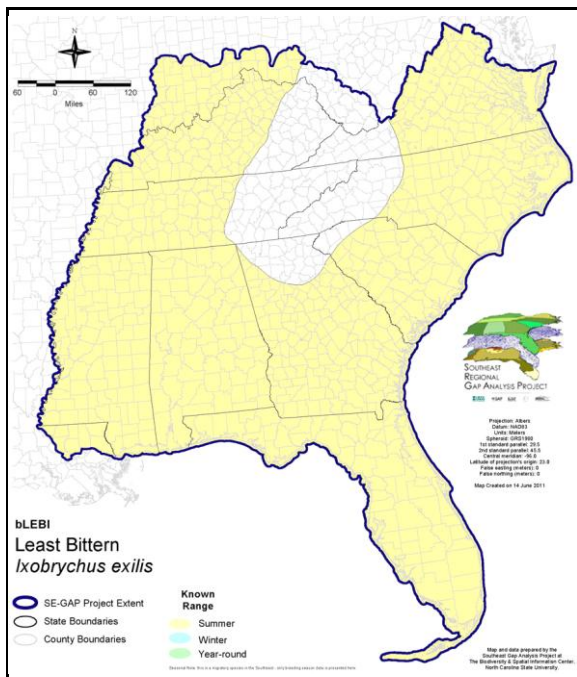
Family: Ardeidae

SE-GAP Spp Code: **bLEBI**

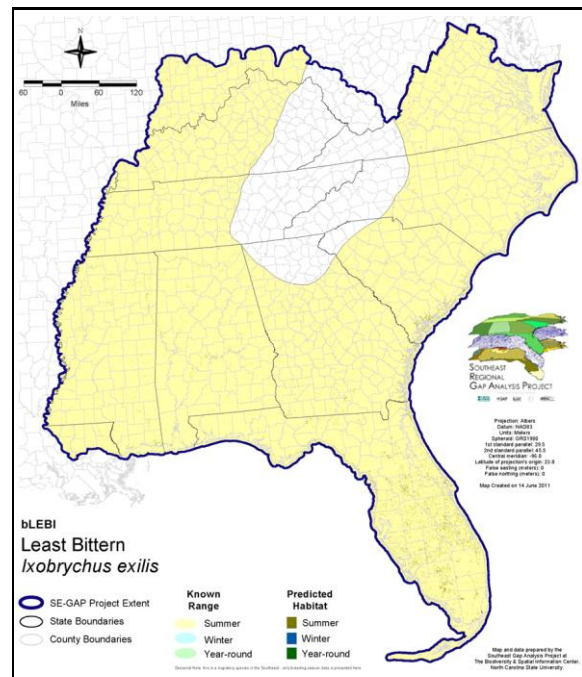
ITIS Species Code: 174846

NatureServe Element Code: ABNGA02010

#### KNOWN RANGE:



#### PREDICTED HABITAT:



Range Map Link: [http://www.basic.ncsu.edu/segap/datazip/maps/SE\\_Range\\_bLEBI.pdf](http://www.basic.ncsu.edu/segap/datazip/maps/SE_Range_bLEBI.pdf)

Predicted Habitat Map Link: [http://www.basic.ncsu.edu/segap/datazip/maps/SE\\_Dist\\_bLEBI.pdf](http://www.basic.ncsu.edu/segap/datazip/maps/SE_Dist_bLEBI.pdf)

GAP Online Tool Link: <http://www.gapservice.ncsu.edu/segap/segap/index2.php?species=bLEBI>

Data Download: [http://www.basic.ncsu.edu/segap/datazip/region/vert/bLEBI\\_se00.zip](http://www.basic.ncsu.edu/segap/datazip/region/vert/bLEBI_se00.zip)

#### PROTECTION STATUS:

Reported on March 14, 2011

Federal Status: ---

State Status: AR (W), AZ (WSC), CA (None), CT (T), CT (T), ID (P), IL (LT), IN (SE), KY (T), MA (E), MD (I), ME (E), MI (T), NC (SC), NC (SC), NH (SC), NJ (SC/sC), NV (YES), NY (T), OH (T), PA (PE), RI (State Threatened), TN (D), UT (None), WI (SC/M), WI (SC/M), BC (8 (2005)), ON (THR), QC (Susceptible)

NS Global Rank: G5

NS State Rank: AL (S2N,S4B), AR (S2B,S2N), AZ (S3), CA (S1), CO (S2B), CO (S2B), CT (S2B), CT (S2B), DC (S1B,S2N), DE (S1B), FL (S4), GA (S4), IA (S3B,S2N), ID (SNA), IL (S2), IN (S3B), KS (S2B), KY (S1S2B), LA (S5B), MA (S1S2B), MD (S2S3B), ME (S2B), MI (S2), MN (SNRB), MO (S3), MS (S3B), MT (SNA), NC (S3B), NC (S3B), ND (SNRB), NE (S4), NH (S1B), NJ (S3B,S3N), NM (S3B,S3N), NV (S2B), NY (S3B,S1N), OH (S2), OK (S4?), OR (S1B), PA (S1B), RI (S2B,S2N), SC (SNRB,SNRN), SD (S2B), SD (S2B), TN (S2B), TX (S4B), UT (SHB), VA (S3B,S3N), VT (S2B,S2N), WI (S3B), WI (S3B), WV (S1B), WY (SNA), BC (SNA), MB (S2S3B), MB (S2S3B), NB (S2B), NF (SNA), NS (S1B), ON (S4B), PE (SNA), QC (S2S3B), SK (SNA)

**SUMMARY OF PREDICTED HABITAT BY MANAGMENT AND GAP PROTECTION STATUS:**

	US FWS		US Forest Service		Tenn. Valley Author.		US DOD/ACOE	
	ha	%	ha	%	ha	%	ha	%
Status 1	20,332.8	3	0.0	0	0.0	0	0.0	0
Status 2	13,687.3	2	335.2	< 1	0.0	0	22.3	< 1
Status 3	399.2	< 1	1,833.0	< 1	0.0	0	12,644.6	2
Status 4	1.9	< 1	0.0	0	0.0	0	10.4	< 1
Total	34,421.2	4	2,168.2	< 1	0.0	0	12,677.3	2
	US Dept. of Energy		US Nat. Park Service		NOAA		Other Federal Lands	
	ha	%	ha	%	ha	%	ha	%
Status 1	0.0	0	5,939.5	< 1	363.2	< 1	3,431.5	< 1
Status 2	0.0	0	16,711.6	2	12,212.6	2	14.7	< 1
Status 3	0.0	0	19,275.3	3	0.0	0	7.3	< 1
Status 4	0.0	0	1.0	0	0.0	0	0.0	0
Total	0.0	0	41,928.2	5	12,575.7	2	3,453.5	< 1
	Native Am. Reserv.		State Park/Hist. Park		State WMA/Gameland		State Forest	
	ha	%	ha	%	ha	%	ha	%
Status 1	0.0	0	1.6	< 1	0.0	0	0.0	0
Status 2	0.0	0	69.7	< 1	37,157.8	5	0.0	0
Status 3	0.0	0	39,553.7	5	3,748.1	< 1	5,289.8	< 1
Status 4	0.0	0	0.0	0	351.7	< 1	0.0	0
Total	0.0	0	39,625.0	5	41,257.6	5	5,289.8	< 1
	State Coastal Reserve		ST Nat.Area/Preserve		Other State Lands		Private Cons. Easemt.	
	ha	%	ha	%	ha	%	ha	%
Status 1	0.0	0	229.6	< 1	0.0	0	0.0	0
Status 2	10,405.0	1	8,652.9	1	0.0	0	243.3	< 1
Status 3	0.0	0	1,006.3	< 1	949.4	< 1	7,923.9	1
Status 4	0.0	0	0.0	0	7.7	< 1	0.0	0
Total	10,405.0	1	9,888.8	1	957.1	< 1	8,167.1	1
	Private Land - No Res.		Water		Overall Total			
	ha	%	ha	%	ha	%	ha	%
Status 1	0.0	2	0.0	0	30,298.3 4			
Status 2	0.8	< 1	0.0	< 1	99,513.0 13			
Status 3	36.1	< 1	< 0.1	< 1	92,666.9 12			
Status 4	523,495.9	68	21,509.8	3	545,729.1 71			
Total	523,533.0	68	21,510.0	3	768,207.3 100			

GAP Status 1: An area having permanent protection from conversion of natural land cover and a mandated management plan in operation to maintain a natural state within which disturbance events (of natural type, frequency, and intensity) are allowed to proceed without interference or are mimicked through management.

GAP Status 2: An area having permanent protection from conversion of natural land cover and a mandated management plan in operation to maintain a primarily natural state, but which may receive use or management practices that degrade the quality of existing natural communities.

GAP Status 3: An area having permanent protection from conversion of natural land cover for the majority of the area, but subject to extractive uses of either a broad, low-intensity type or localized intense type. It also confers protection to federally listed endangered and threatened species throughout the area.

GAP Status 4: Lack of irrevocable easement or mandate to prevent conversion of natural habitat types to anthropogenic habitat types. Allows for intensive use throughout the tract. Also includes those tracts for which the existence of such restrictions or sufficient information to establish a higher status is unknown.

## PREDICTED HABITAT MODEL(S):

### Summer Model:

Habitat Description: Breed in freshwater and brackish marshes with dense, tall growths of aquatic or semi-aquatic emergent vegetation interspersed with clumps of woody vegetation and open water. Occasionally in salt marshes and mangrove swamps. Forage in thick vegetation of freshwater wetlands and adjacent open water. In Everglades, especially found in dense stands of mixed sawgrass/cattail and homogenous cattail (Gibbs et al. 1992). M. Rubino, 10nov04.

### Hydrography Mask:

Utilizes flowing water features with buffers of 500m from and 30m into selected water features.

Utilizes open water features with buffers of 500m from and 30m into selected water features.

Utilizes wet vegetation features with buffers of 500m from and 120m into selected vegetation features.

### Selected Map Units:

Functional Group	Map Unit Name
Beach	Unconsolidated Shore (Beach/Dune)
Brackish Tidal Marsh & Wetland	Atlantic Coastal Plain Central Salt and Brackish Tidal Marsh
Brackish Tidal Marsh & Wetland	Atlantic Coastal Plain Embayed Region Tidal Salt and Brackish Marsh
Brackish Tidal Marsh & Wetland	Atlantic Coastal Plain Indian River Lagoon Tidal Marsh
Brackish Tidal Marsh & Wetland	Atlantic Coastal Plain Northern Tidal Salt Marsh
Brackish Tidal Marsh & Wetland	Florida Big Bend Salt-Brackish Tidal Marsh
Brackish Tidal Marsh & Wetland	Mississippi Sound Salt and Brackish Tidal Marsh
Brackish Tidal Marsh & Wetland	South Florida Everglades Sawgrass Marsh
Brackish Tidal Marsh & Wetland	Southwest Florida Perched Barriers Salt Swamp and Lagoon - Marsh Modifier
Coastal Dune & Freshwater Wetland	Atlantic and Gulf Coastal Plain Interdunal Wetland
Freshwater Tidal Marsh & Wetland	Atlantic Coastal Plain Central Fresh-Oligohaline Tidal Marsh
Freshwater Tidal Marsh & Wetland	Atlantic Coastal Plain Embayed Region Tidal Freshwater Marsh
Freshwater Tidal Marsh & Wetland	Atlantic Coastal Plain Northern Fresh and Oligohaline Tidal Marsh
Freshwater Tidal Marsh & Wetland	Florida Big Bend Fresh-Oligohaline Tidal Marsh
Water	Open Water (Brackish/Salt)
Water	Open Water (Fresh)
Wetlands	Atlantic Coastal Plain Clay-Based Carolina Bay Herbaceous Wetland
Wetlands	Atlantic Coastal Plain Depression Pondshore
Wetlands	Atlantic Coastal Plain Large Natural Lakeshore
Wetlands	Atlantic Coastal Plain Northern Pondshore
Wetlands	Atlantic Coastal Plain Sandhill Seep
Wetlands	Central Appalachian Floodplain - Herbaceous Modifier
Wetlands	Central Appalachian Riparian - Herbaceous Modifier
Wetlands	Central Florida Herbaceous Pondshore
Wetlands	Central Florida Herbaceous Seep
Wetlands	East Gulf Coastal Plain Large River Floodplain Forest - Herbaceous Modifier
Wetlands	East Gulf Coastal Plain Northern Depression Pondshore
Wetlands	East Gulf Coastal Plain Southern Depression Pondshore
Wetlands	Floridian Highlands Freshwater Marsh
Wetlands	Lower Mississippi River Bottomland Depressions - Herbaceous Modifier
Wetlands	South Florida Freshwater Slough and Gator Hole
Wetlands	South Florida Pond-Apple/Popash Slough
Wetlands	South-Central Interior Large Floodplain - Herbaceous Modifier
Wetlands	Southern Appalachian Seepage Wetland
Wetlands	Southern Coastal Plain Herbaceous Seepage Bog
Wetlands	Southern Coastal Plain Spring-run Stream Aquatic Vegetation
Wetlands	Southern Piedmont Large Floodplain Forest - Herbaceous Modifier
Wetlands	Unconsolidated Shore (Lake/River/Pond)
Wetlands	Western Highland Rim Seepage Fen

- CITATIONS:** American Ornithologists' Union (AOU), Committee on Classification and Nomenclature. 1983. Check-list of North American Birds. Sixth Edition. American Ornithologists' Union, Allen Press, Inc., Lawrence, Kansas.
- Andrle, R.F., and J.R. Carroll. 1988. The atlas of breeding birds in New York State. Cornell Univ., Ithaca, New York. 551 pp.
- Aniskowicz, B. T. 1981. Behavior of a male least bittern *IXOBRYCHUS EXILIS* after loss of mate. *Wilson Bulletin* 93:395-397.
- Brewer, R., G.A. McPeck, and R.J. Adams, Jr. 1991. The Atlas of Breeding Birds of Michigan. Michigan State University Press, East Lansing, Michigan. xvii + 594 pp.
- Brown, M., and J.J. Dinsmore. 1986. Implications of marsh size and isolation for marsh bird management. *Journal of Wildlife Management* 50:392-397.
- Cogswell, H.L. 1977. Water birds of California. Univ. California Press, Berkeley. 399 pp.
- Ehrlich, P.R., D.S. Dobkin, and D. Wheye. 1988. The birder's handbook: a field guide to the natural history of North American birds. Simon and Shuster, Inc., New York. xxx + 785 pp.
- Ehrlich, P.R., D.S. Dobkin, and D. Wheye. 1992. Birds in jeopardy: the imperiled and extinct birds of the United States and Canada, including Hawaii and Puerto Rico. Stanford University Press, Stanford, California. 259 pp.
- Evers, D. C. 1992. A guide to Michigan's endangered wildlife. Univ. Michigan Press, Ann Arbor. viii + 103 pp.
- Frederick, P. C., et al. 1990. Relative abundance and habitat preferences of least bitterns (*IXOBRYCHUS EXILIS*) in the Everglades. *Florida Field Nat.* 18:1-20.
- Fredrickson, L.H., and F.A. Reid. 1986. Wetlands and riparian habitats: a nongame management overview. Pages 59-96 in J.B. Hale, L.B. Best, and R. L. Clawson, (eds.) Management of nongame wildlife in the Midwest: a developing art. Proc. Symp. 47th Midwest F
- Fussell, J. III and M. Lyons. 1990. Birds of the Outer Banks [pamphlet]. Eastern National Parks and Monument Association Coastal Wildlife Refuge Society.
- Gibbs, J. P., and S. M. Melvin. 1992. Least bittern, *IXOBRYCHUS EXILIS*. Pages 71-88 in K. J. Schneider and D. M. Pence, editors. Migratory nongame birds of management concern in the Northeast. U.S. Fish and Wildlife Service, Newton Corner, Massachusetts.
- Gibbs, J. P., F. A. Reid, and S. M. Melvin. American Bittern. The Birds of North America. A. Poole, P. Stettenheim, and F. Gill ed. Philadelphia: The Academy of Natural Sciences; Washington, D.C.: The American Ornithologists Union; 1992; 1 (18).
- Hands, H.M., R.D. Drobney, and M.R. Ryan. 1989. Status of the least bittern in the northcentral United States. *Missouri Coop. Fish Wildl. Res. Unit Rep.* 13 pp.
- Harrison, H.H. 1979. A field guide to western birds' nests. Houghton Mifflin Company, Boston. 279 pp.
- Herkert, J. R., editor. 1992. Endangered and threatened species of Illinois: status and distribution. Vol. 2: Animals. Illinois Endangered Species Protection Board. iv + 142 pp.
- Kaufman K. 1996. Lives of North American Birds. Boston, New York: Houghton Mifflin Company.
- Kushlan, J. A. 1973. Least bittern nesting colonially. *Auk* 90:685-686.
- Manci, K.M., and D.H. Rusch. 1988. Indices to distribution and abundance of some inconspicuous waterbirds at Horicon Marsh. *Journal of Field Ornithology* 59:67-75.
- National Geographic Society (NGS). 1983. Field guide to the birds of North America. National Geographic Society, Washington, D.C.
- Palmer, R. S. (editor). 1962. Handbook of North American birds. Vol. 1. Loons through flamingos. Yale University Press, New Haven. 567 pp.
- Payne, R. B., and C. J. Risley. 1976. Systematics and evolutionary relationships among the herons (Ardeidae). *Univ. Michigan Mus. Zool., Misc. Publ. No. 150.* 115 pp.
- Potter, E. F., J. F. Parnell, and R. P. Teulings. 1980. Birds of the Carolinas. Univ. North Carolina Press, Chapel Hill. 408 pp.
- Root, T. 1988. Atlas of wintering North American birds: An analysis of Christmas Bird Count data. University of Chicago Press. 336 pp.
- Simpson MB Jr. 1992. Birds of the Blue Ridge Mountains. Chapel Hill and London: University of North Carolina Press.
- Stiles, F.G., and A.F. Skutch. 1989. A guide to the birds of Costa Rica. Comstock Publ. Associates, Cornell University Press, Ithaca, New York. 511 pp.
- Swift, B. L. 1987. An analysis of avian breeding habitats in Hudson river tidal marshes. New York State Department of Environmental Conservation, Division of Fish and Wildlife, Delmar, New York. Unpublished report. 62 pp.
- Terres, J.K. 1980. The Audubon Society encyclopedia of North American birds. Alfred A. Knopf, New York.
- Weller, M. W. 1961. Breeding biology of the least bittern. *Wilson Bulletin.* 73:11-35.

For more information:: SE-GAP Analysis Project / BaSIC  
127 David Clark Labs  
Dept. of Biology, NCSU  
Raleigh, NC 27695-7617  
(919) 513-2853  
[www.basic.ncsu.edu/segap](http://www.basic.ncsu.edu/segap)

Compiled: 15 September 2011

This data was compiled and/or developed  
by the Southeast GAP Analysis Project at  
The Biodiversity and Spatial Information  
Center, North Carolina State University.