



SOUTHEAST GAP ANALYSIS PROJECT



Species Modeling Report

Greater Scaup

Aythya marila

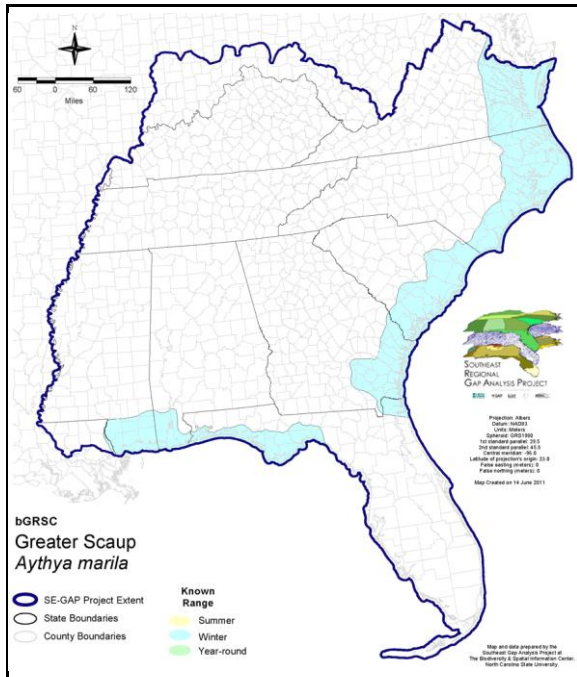
Taxa: Avian
 Order: Anseriformes
 Family: Anatidae

SE-GAP Spp Code: **bGRSC**

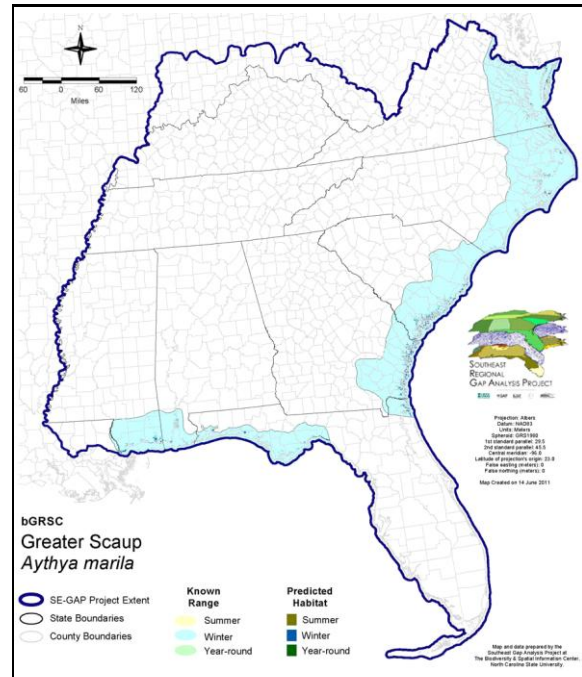
ITIS Species Code: 175130

NatureServe Element Code: ABNJB11060

KNOWN RANGE:



PREDICTED HABITAT:



Range Map Link: http://www.basic.ncsu.edu/segap/datazip/maps/SE_Range_bGRSC.pdf

Predicted Habitat Map Link: http://www.basic.ncsu.edu/segap/datazip/maps/SE_Dist_bGRSC.pdf

GAP Online Tool Link: <http://www.gapservice.ncsu.edu/segap/segap/index2.php?species=bGRSC>

Data Download: http://www.basic.ncsu.edu/segap/datazip/region/vert/bGRSC_se00.zip

PROTECTION STATUS:

Reported on March 14, 2011

Federal Status: ---

State Status: AL (GB), ID (G), KY (N), ME (SC), NV (YES), NY (PB - GS), RI (Not Listed), UT (None), BC (4 (2005)), QC (Non suivie)

NS Global Rank: G5

NS State Rank: AK (S5B,S5N), AL (S4N), AR (SNA), AZ (S1N), CA (SNRN), CO (SNA), CT (SNA), DC (S1N), DE (S4N), FL (SNRN), GA (S4), IA (S2N), ID (SNA), IL (SNA), IN (S3N), KS (S2N), KY (S2S3N), LA (S4N), MA (S5N), MD (S4N), ME (S3S4N), MI (SNRN), MN (SNRM), MO (SNRN), MS (S5N), MT (SNA), NC (S2N), ND (SNA), NE (SNRN), NH (SNA), NJ (SNA), NM (S4N), NV (S1N), NY (SNRN), OH (SNRN), OK (SNA), OR (S4), PA (S2S3N), RI (SNA), SC (SNRN), SD (SNA), TN (S4N), TX (S3N), UT (SNA), VA (SNRN), VT (S4N), WA (S3N), WI (SNA), WV (S3N), WY (S4N), AB (SNA), AB (SNA), BC (S4N), LB (S5B), MB (S5B), MB (S5B), NB (S1B,S2N), NF (S4B), NS (S3N), NT (SNRB), NU (SNRB), ON (S4), ON (S4), PE (S1B,S1N,S3M), QC (S4B), SK (S5M), SK (S5M), SK (S5M), YT (S4B)

SUMMARY OF PREDICTED HABITAT BY MANAGMENT AND GAP PROTECTION STATUS:

	US FWS		US Forest Service		Tenn. Valley Author.		US DOD/ACOE	
	ha	%	ha	%	ha	%	ha	%
Status 1	41,473.6	7	0.0	0	0.0	0	0.0	0
Status 2	20,875.6	3	72.7	< 1	0.0	0	0.6	< 1
Status 3	806.5	< 1	586.5	< 1	0.0	0	15,660.5	3
Status 4	0.0	0	0.0	0	0.0	0	12.1	< 1
Total	63,155.7	11	659.3	< 1	0.0	0	15,673.1	3
	US Dept. of Energy		US Nat. Park Service		NOAA		Other Federal Lands	
	ha	%	ha	%	ha	%	ha	%
Status 1	0.0	0	134.3	< 1	952.3	< 1	0.0	0
Status 2	0.0	0	22,127.3	4	21,923.5	4	25.7	< 1
Status 3	0.0	0	1,639.4	< 1	0.0	0	10.2	< 1
Status 4	0.0	0	3.0	0	0.0	0	0.0	0
Total	0.0	0	23,904.0	4	22,875.8	4	35.8	< 1
	Native Am. Reserv.		State Park/Hist. Park		State WMA/Gameland		State Forest	
	ha	%	ha	%	ha	%	ha	%
Status 1	0.0	0	30.5	< 1	0.0	0	0.0	0
Status 2	0.0	0	79.7	< 1	35,689.7	6	0.0	0
Status 3	0.0	0	8,277.7	1	6,406.9	1	1,125.7	< 1
Status 4	0.0	0	0.0	0	521.7	< 1	0.0	0
Total	0.0	0	8,387.9	1	42,618.3	7	1,125.7	< 1
	State Coastal Reserve		ST Nat.Area/Preserve		Other State Lands		Private Cons. Easemt.	
	ha	%	ha	%	ha	%	ha	%
Status 1	0.0	0	453.8	< 1	0.0	0	0.0	0
Status 2	25,189.7	4	17,582.0	3	0.0	0	0.0	0
Status 3	0.0	0	0.0	0	0.0	0	309.7	< 1
Status 4	0.0	0	0.0	0	4.1	< 1	0.0	0
Total	25,189.7	4	18,035.8	3	4.1	< 1	309.7	< 1
	Private Land - No Res.		Water		Overall Total			
	ha	%	ha	%	ha	%	ha	%
Status 1	0.0	2	0.0	0	43,044.7 7			
Status 2	0.8	< 1	0.0	2	143,567.5 24			
Status 3	129.4	< 1	< 0.1	< 1	34,952.5 6			
Status 4	371,315.8	62	6,538.7	1	378,917.2 63			
Total	371,446.2	62	6,539.0	1	600,481.8 100			

GAP Status 1: An area having permanent protection from conversion of natural land cover and a mandated management plan in operation to maintain a natural state within which disturbance events (of natural type, frequency, and intensity) are allowed to proceed without interference or are mimicked through management.

GAP Status 2: An area having permanent protection from conversion of natural land cover and a mandated management plan in operation to maintain a primarily natural state, but which may receive use or management practices that degrade the quality of existing natural communities.

GAP Status 3: An area having permanent protection from conversion of natural land cover for the majority of the area, but subject to extractive uses of either a broad, low-intensity type or localized intense type. It also confers protection to federally listed endangered and threatened species throughout the area.

GAP Status 4: Lack of irrevocable easement or mandate to prevent conversion of natural habitat types to anthropogenic habitat types. Allows for intensive use throughout the tract. Also includes those tracts for which the existence of such restrictions or sufficient information to establish a higher status is unknown.

PREDICTED HABITAT MODEL(S):

Winter Model:

Habitat Description: Greater scaup almost exclusively use marine habitats within thier winter range (Kessel et al. 2002). They typically can be found on shallow, saltwater bays, and brackish river inlets (Kessel et al. 2002, Stevenson & Anderson 1994). Amy Silvano 05Sept05

Ecosystem Classifiers: Coastal Brackish Marshes, open Water (Salt), Floodplain/Riparian Herb only. Amy Silvano 05Sept05

Selected Map Units:

Functional Group	Map Unit Name
Brackish Tidal Marsh & Wetland	Atlantic Coastal Plain Central Salt and Brackish Tidal Marsh
Brackish Tidal Marsh & Wetland	Atlantic Coastal Plain Embayed Region Tidal Salt and Brackish Marsh
Brackish Tidal Marsh & Wetland	Atlantic Coastal Plain Indian River Lagoon Tidal Marsh
Brackish Tidal Marsh & Wetland	Atlantic Coastal Plain Northern Sea-Level Fen
Brackish Tidal Marsh & Wetland	Atlantic Coastal Plain Northern Tidal Salt Marsh
Brackish Tidal Marsh & Wetland	Atlantic Coastal Plain Northern Tidal Wooded Swamp
Brackish Tidal Marsh & Wetland	Atlantic Coastal Plain Southern Tidal Wooded Swamp
Brackish Tidal Marsh & Wetland	East Gulf Coastal Plain Tidal Wooded Swamp
Brackish Tidal Marsh & Wetland	Florida Big Bend Salt-Brackish Tidal Marsh
Brackish Tidal Marsh & Wetland	Mississippi Sound Salt and Brackish Tidal Marsh
Wetlands	Atlantic Coastal Plain Blackwater Stream Floodplain Forest - Herbaceous Modifier
Wetlands	East Gulf Coastal Plain Large River Floodplain Forest - Herbaceous Modifier
Wetlands	Lower Mississippi River Bottomland Depressions - Herbaceous Modifier

CITATIONS: American Ornithologists' Union (AOU), Committee on Classification and Nomenclature. 1983. Check-list of North American Birds. Sixth Edition. American Ornithologists' Union, Allen Press, Inc., Lawrence, Kansas.

Barclay, J., and J. Zingo. 1994. Winter scaup populations in Connecticut coastal waters. Connecticut Warbler 13:136-150.

Bellrose, F.C. 1976. Ducks, geese and swans of North America. Stackpole Books, Harrisburg, Pa.

Harrison, C. 1978. A field guide to the nests, eggs and nestlings of North American birds. Collins, Cleveland, Ohio.

Johnson, S.R., and D.R. Herter. 1989. The birds of the Beaufort Sea. BP Exploration (Alaska) Inc., Anchorage, Alaska. 372 pp.

Kessel, B., D.A. Rocque, and J.S. Barclay. 2002. Greater Scaup (*Aythya marila*). In The Birds of North America, No.650 (A. Poole and F. Gill, eds.). The Birds of North America, Inc., Philadelphia, PA.

McAlpine, D. F., S. Makepeace, and M. Phinney. 1988. Breeding records of the greater scaup, *AYTHYA MARILA*, in New Brunswick. Canadian Field-Nat. 102:718-719.

Root, T. 1988. Atlas of wintering North American birds:An analysis of Christmas Bird Count data. University of Chicago Press. 336 pp.

Terres, J.K. 1980. The Audubon Society encyclopedia of North American birds. Alfred A. Knopf, New York.

For more information:: SE-GAP Analysis Project / BaSIC
127 David Clark Labs
Dept. of Biology, NCSU
Raleigh, NC 27695-7617
(919) 513-2853
www.basic.ncsu.edu/segap

Compiled: 15 September 2011

This data was compiled and/or developed by the Southeast GAP Analysis Project at The Biodiversity and Spatial Information Center, North Carolina State University.