



SOUTHEAST GAP ANALYSIS PROJECT



Species Modeling Report

Forster's Tern

Sterna forsteri

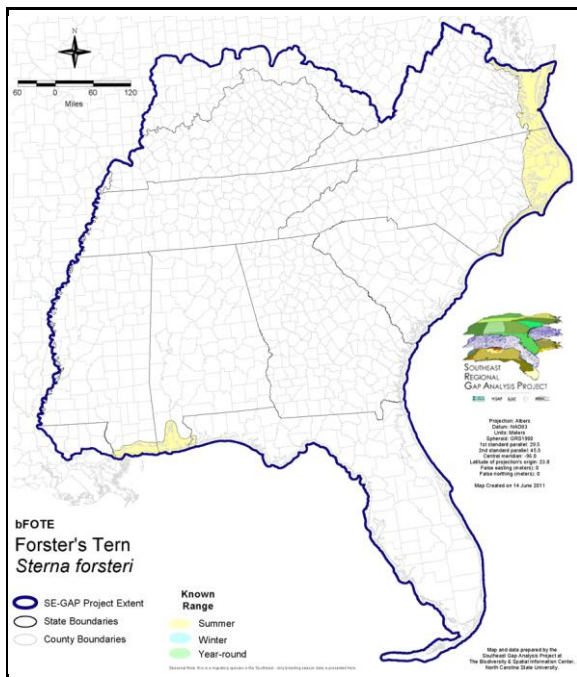
Taxa: Avian
 Order: Charadriiformes
 Family: Laridae

SE-GAP Spp Code: **bFOTE**

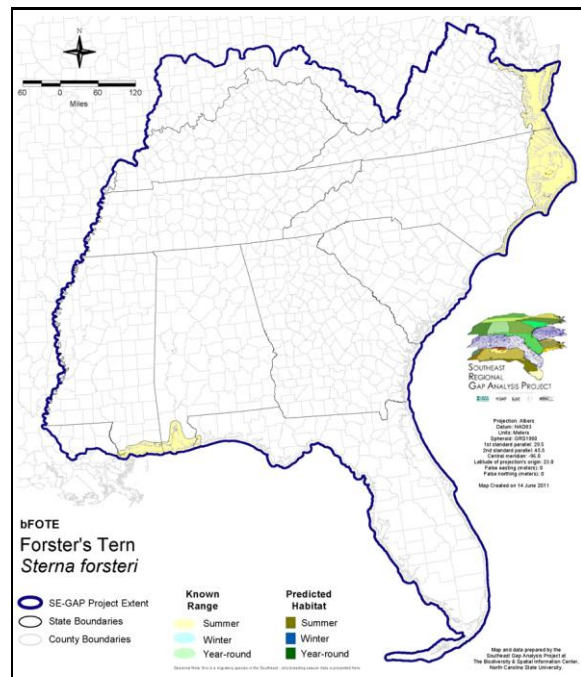
ITIS Species Code: 176887

NatureServe Element Code: ABNNM08090

KNOWN RANGE:



PREDICTED HABITAT:



Range Map Link: http://www.basic.ncsu.edu/segap/datazip/maps/SE_Range_bFOTE.pdf

Predicted Habitat Map Link: http://www.basic.ncsu.edu/segap/datazip/maps/SE_Dist_bFOTE.pdf

GAP Online Tool Link: <http://www.gapservice.ncsu.edu/segap/segap/index2.php?species=bFOTE>

Data Download: http://www.basic.ncsu.edu/segap/datazip/region/vert/bFOTE_se00.zip

PROTECTION STATUS:

Reported on March 14, 2011

Federal Status: ---

State Status: CA (None), DE (E), DE (E), IA (S), ID (P), ID (P), IL (LE), KY (N), MI (T), MN (SPC), NC (W2), NJ (INC/S), NV (YES), NY (PB), RI (Not Listed), UT (None), VA (SC), WA (M), WA (M), WI (END), WI (END), BC (2 (2005)), ON (DD), QC (Non suivie)

NS Global Rank: G5

NS State Rank: AL (S1B,S5N), AR (SNA), AZ (S2N), CA (S4), CO (S2B,S4N), CT (SNA), DC (S2S3N), DE (S1B), DE (S1B), FL (SNRN), GA (S5), IA (S2B,S3N), ID (S1B), ID (S1B), IL (S1), IN (SHB), IN (SHB), KS (S1B), KS (S1B), KY (SNA), LA (S5), MA (S1B,S2N), MA (S1B,S2N), MD (S4B), ME (SNA), MI (S2), MN (S3B), MO (SNA), MS (S5N), MT (S2B), NC (S3B,S5N), ND (SU), NE (S3), NH (SNA), NJ (S4B), NM (S4N), NM (S4N), NV (S3B), NY (S1), OH (SNA), OK (S4N), OR (S3B), PA (SNA), RI (S2N), SC (SNRN), SC (SNRN), SD (S4B), SD (S4B), TN (S3N), TX (S5), UT (S4B), VA (S3B,S3N), VT (SNA), WA (S3B), WA (S3B), WI (S1B), WI (S1B), WY (S1), WY (S1), AB (S2), BC (S1B), MB (S4B), MB (S4B), NB (SNA), NF (SNA), NS (SNA), ON (S2B), QC (S3N), SK (S4B), SK (S4B)

SUMMARY OF PREDICTED HABITAT BY MANAGMENT AND GAP PROTECTION STATUS:

	US FWS		US Forest Service		Tenn. Valley Author.		US DOD/ACOE	
	ha	%	ha	%	ha	%	ha	%
Status 1	14,995.9	9	0.0	0	0.0	0	0.0	0
Status 2	11,544.2	7	0.0	0	0.0	0	0.0	0
Status 3	608.0	< 1	79.0	< 1	0.0	0	5,994.4	3
Status 4	0.0	0	0.0	0	0.0	0	4.9	< 1
Total	27,148.1	16	79.0	< 1	0.0	0	5,999.2	3
	US Dept. of Energy		US Nat. Park Service		NOAA		Other Federal Lands	
	ha	%	ha	%	ha	%	ha	%
Status 1	0.0	0	0.0	0	245.2	< 1	0.0	0
Status 2	0.0	0	13,479.8	8	1,306.0	< 1	0.0	0
Status 3	0.0	0	7.7	< 1	0.0	0	0.0	0
Status 4	0.0	0	2.0	0	0.0	0	0.0	0
Total	0.0	0	13,489.6	8	1,551.2	< 1	0.0	0
	Native Am. Reserv.		State Park/Hist. Park		State WMA/Gameland		State Forest	
	ha	%	ha	%	ha	%	ha	%
Status 1	0.0	0	1.4	< 1	0.0	0	0.0	0
Status 2	0.0	0	45.5	< 1	5,931.6	3	0.0	0
Status 3	0.0	0	1,502.4	< 1	3,381.0	2	0.0	0
Status 4	0.0	0	0.0	0	400.6	< 1	0.0	0
Total	0.0	0	1,549.3	< 1	9,713.3	6	0.0	0
	State Coastal Reserve		ST Nat.Area/Preserve		Other State Lands		Private Cons. Easemt.	
	ha	%	ha	%	ha	%	ha	%
Status 1	0.0	0	350.0	< 1	0.0	0	0.0	0
Status 2	18,504.8	11	4,845.0	3	0.0	0	0.0	0
Status 3	0.0	0	0.0	0	0.0	0	88.1	< 1
Status 4	0.0	0	0.0	0	0.0	0	0.0	0
Total	18,504.8	11	5,195.0	3	0.0	0	88.1	< 1
	Private Land - No Res.		Water		Overall Total			
	ha	%	ha	%	ha	%		
Status 1	0.0	0	0.0	0	15,592.7	9		
Status 2	0.8	< 1	0.0	0	55,657.9	32		
Status 3	96.1	< 1	0.0	0	11,756.7	6		
Status 4	86,269.8	50	4,128.4	2	91,206.3	53		
Total	86,366.9	50	4,128.6	2	174,213.5	100		

GAP Status 1: An area having permanent protection from conversion of natural land cover and a mandated management plan in operation to maintain a natural state within which disturbance events (of natural type, frequency, and intensity) are allowed to proceed without interference or are mimicked through management.

GAP Status 2: An area having permanent protection from conversion of natural land cover and a mandated management plan in operation to maintain a primarily natural state, but which may receive use or management practices that degrade the quality of existing natural communities.

GAP Status 3: An area having permanent protection from conversion of natural land cover for the majority of the area, but subject to extractive uses of either a broad, low-intensity type or localized intense type. It also confers protection to federally listed endangered and threatened species throughout the area.

GAP Status 4: Lack of irrevocable easement or mandate to prevent conversion of natural habitat types to anthropogenic habitat types. Allows for intensive use throughout the tract. Also includes those tracts for which the existence of such restrictions or sufficient information to establish a higher status is unknown.

PREDICTED HABITAT MODEL(S):

Summer Model:

Habitat Description: Along Atlantic Coast, breeds in marshy portions of beach and estuarine areas, as well as barrier islands. Forages throughout marshes in which they breed. In saltwater, coastal areas, forages in shallow water (< 1m) over flood-tide mudflats or in areas of calm water offering high visibility (McNicholl et al. 2001). M. Rubino, 31dec04.

Hydrography Mask:

Brackish/Saltwater Only

Utilizes open water features with buffers of unlimited from and 500m into selected water features.

Selected Map Units:

Functional Group	Map Unit Name
Beach	Atlantic Coastal Plain Northern Sandy Beach
Beach	Unconsolidated Shore (Beach/Dune)
Brackish Tidal Marsh & Wetland	Atlantic Coastal Plain Central Salt and Brackish Tidal Marsh
Brackish Tidal Marsh & Wetland	Atlantic Coastal Plain Embayed Region Tidal Salt and Brackish Marsh
Brackish Tidal Marsh & Wetland	Atlantic Coastal Plain Northern Tidal Salt Marsh
Brackish Tidal Marsh & Wetland	Mississippi Sound Salt and Brackish Tidal Marsh
Coastal Dune & Freshwater Wetland	Atlantic and Gulf Coastal Plain Interdunal Wetland
Coastal Dune & Freshwater Wetland	Atlantic Coastal Plain Northern Dune and Maritime Grassland
Coastal Dune & Freshwater Wetland	Atlantic Coastal Plain Southern Dune and Maritime Grassland
Coastal Dune & Freshwater Wetland	East Gulf Coastal Plain Dune and Coastal Grassland
Water	Open Water (Aquaculture)
Water	Open Water (Brackish/Salt)

- CITATIONS:** American Ornithologists' Union (AOU), Committee on Classification and Nomenclature. 1983. Check-list of North American Birds. Sixth Edition. American Ornithologists' Union, Allen Press, Inc., Lawrence, Kansas.
- Byrd, M.A., and D.W. Johnston. 1991. Birds. Pages 477-537 in K. Terwilliger, coordinator. Virginia's endangered species: proceedings of a symposium. McDonald and Woodward Publ. Co., Blacksburg, Virginia.
- Clapp, R. B., and P. A. Buckley. 1984. Status and conservation of seabirds in the southeastern United States. Pages 135-155 in Croxall et al., eds. Status and conservation of the world's seabirds. ICBP Tech. Pub. No. 2.
- Cuthbert, F. J., and M.-Y. Louis. 1993. The Forster's tern in Minnesota: status, distribution, and reproductive success. Wilson Bull. 105:184-187.
- Ehrlich, P.R., D.S. Dobkin, and D. Wheye. 1988. The birder's handbook: a field guide to the natural history of North American birds. Simon and Shuster, Inc., New York. xxx + 785 pp.
- Fussell, J.O. III. 1994. A birder's guide to coastal North Carolina. Chapel Hill and London: The University of North Carolina Press.
- Harrison, C. 1978. A field guide to the nests, eggs and nestlings of North American birds. Collins, Cleveland, Ohio.
- Herkert, J. R., editor. 1992. Endangered and threatened species of Illinois: status and distribution. Vol. 2: Animals. Illinois Endangered Species Protection Board. iv + 142 pp.
- Kaufman K. 1996. Lives of North American Birds. Boston, New York: Houghton Mifflin Company.
- McNicholl, M. K., P. E. Lowther, and J. A. Hall. 2001. Forster's Tern (*Sterna forsteri*). In The Birds of North America, No. 595 (A. Poole and F. Gill, eds.). The Birds of North America, Inc., Philadelphia, PA.
- Oberholser, H.C. 1974. The bird life of Texas. 2 vols. Univ. of Texas Press, Austin.
- Spendlow, J.A., and S.R. Patton. 1988. National atlas of coastal waterbird colonies in the contiguous United States: 1976-1982. U.S. Fish and Wildlife Service, Biological Report 88(5). x + 326 pp.
- Stiles, F.G., and A.F. Skutch. 1989. A guide to the birds of Costa Rica. Comstock Publ. Associates, Cornell University Press, Ithaca, New York. 511 pp.
- Terres, J.K. 1980. The Audubon Society encyclopedia of North American birds. Alfred A. Knopf, New York.

For more information:: SE-GAP Analysis Project / BaSIC
127 David Clark Labs
Dept. of Biology, NCSU
Raleigh, NC 27695-7617
(919) 513-2853
www.basic.ncsu.edu/segap

Compiled: 15 September 2011

This data was compiled and/or developed
by the Southeast GAP Analysis Project at
The Biodiversity and Spatial Information
Center, North Carolina State University.