



# SOUTHEAST GAP ANALYSIS PROJECT



## Species Modeling Report

### European Starling

*Sturnus vulgaris*

Taxa: Avian

Order: Passeriformes

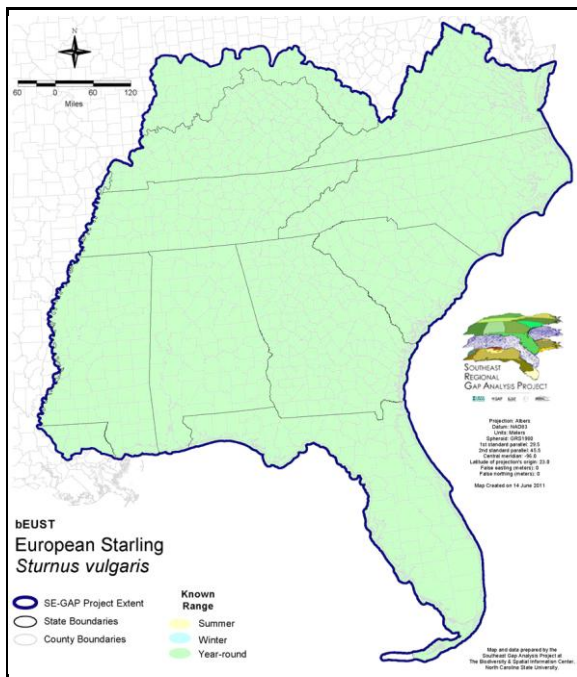
Family: Sturnidae

SE-GAP Spp Code: **bEUST**

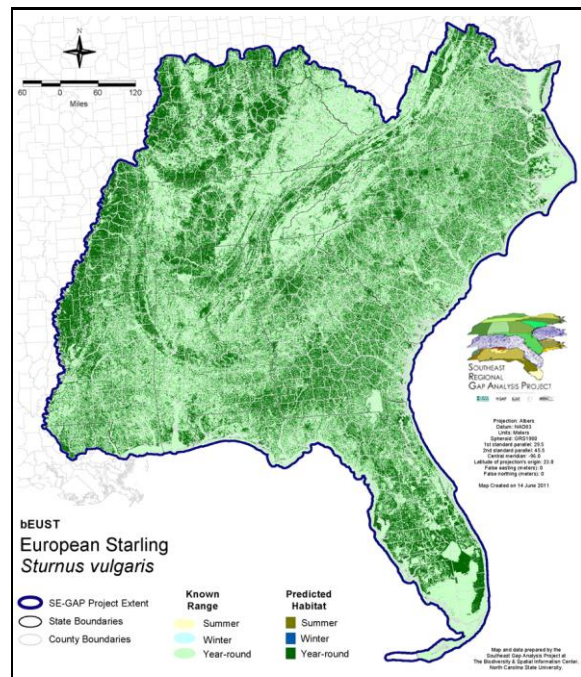
ITIS Species Code: 179637

NatureServe Element Code: ABPBT01010

#### KNOWN RANGE:



#### PREDICTED HABITAT:



Range Map Link: [http://www.basic.ncsu.edu/segap/datazip/maps/SE\\_Range\\_bEUST.pdf](http://www.basic.ncsu.edu/segap/datazip/maps/SE_Range_bEUST.pdf)

Predicted Habitat Map Link: [http://www.basic.ncsu.edu/segap/datazip/maps/SE\\_Dist\\_bEUST.pdf](http://www.basic.ncsu.edu/segap/datazip/maps/SE_Dist_bEUST.pdf)

GAP Online Tool Link: <http://www.gapservice.ncsu.edu/segap/segap/index2.php?species=bEUST>

Data Download: [http://www.basic.ncsu.edu/segap/datazip/region/vert/bEUST\\_se00.zip](http://www.basic.ncsu.edu/segap/datazip/region/vert/bEUST_se00.zip)

#### PROTECTION STATUS:

Reported on March 14, 2011

Federal Status: ---

State Status: ID (PR), KY (N), NJ (I/), NY (U), RI (Not Listed), UT (None), BC (7 (2005)), QC (Non suivie)

NS Global Rank: G5

NS State Rank: AK (SNA), AL (SNA), AR (SNA), AZ (SNA), CA (SNA), CO (SNA), CT (SNA), DC (SNA), DE (SNA), FL (SNA), GA (SNA), IA (SNA), ID (SNA), IL (SNA), IN (SNA), KS (SNA), KY (SNA), LA (SNA), MA (SNA), MD (SNA), ME (SNA), MI (SNA), MN (SNA), MO (SNA), MS (SNA), MT (SNA), NC (SNA), ND (SNA), NE (SNA), NH (SNA), NJ (SNA), NM (SNA), NV (SNA), NY (SNA), OH (SNA), OK (SNA), OR (SNA), PA (SNA), RI (SNA), SC (SNA), SD (SNA), TN (SNA), TX (SNA), UT (SNA), VA (SNA), VT (SNA), WA (SNA), WI (SNA), WV (SNA), WY (SNA), AB (SNA), BC (SNA), LB (SNA), MB (SNA), NB (SNA), NF (SNA), NS (SNA), NT (SNA), NU (SNA), ON (SNA), PE (SNA), QC (SNA), SK (SNA), YT (SNA)

**SUMMARY OF PREDICTED HABITAT BY MANAGMENT AND GAP PROTECTION STATUS:**

	US FWS		US Forest Service		Tenn. Valley Author.		US DOD/ACOE	
	ha	%	ha	%	ha	%	ha	%
Status 1	11,068.3	< 1	468.5	< 1	0.0	0	0.0	0
Status 2	45,185.1	< 1	12,933.1	< 1	0.0	0	859.3	< 1
Status 3	488.7	< 1	236,106.6	< 1	26,771.8	< 1	270,318.1	< 1
Status 4	25.5	< 1	0.0	0	0.0	0	505.9	< 1
Total	56,767.6	< 1	249,508.2	< 1	26,771.8	< 1	271,683.3	< 1
	US Dept. of Energy		US Nat. Park Service		NOAA		Other Federal Lands	
	ha	%	ha	%	ha	%	ha	%
Status 1	0.0	0	10,765.0	< 1	7.5	< 1	1,479.5	< 1
Status 2	0.0	0	3,811.2	< 1	2,996.6	< 1	34.0	< 1
Status 3	17,360.8	< 1	31,403.6	< 1	0.0	0	3,064.6	< 1
Status 4	0.0	0	0.0	0	0.0	0	0.0	0
Total	17,360.8	< 1	45,979.8	< 1	3,004.1	< 1	4,578.1	< 1
	Native Am. Reserv.		State Park/Hist. Park		State WMA/Gameland		State Forest	
	ha	%	ha	%	ha	%	ha	%
Status 1	0.0	0	142.6	< 1	7.1	< 1	0.0	0
Status 2	0.0	0	1,017.5	< 1	136,966.0	< 1	29.7	< 1
Status 3	4,273.7	< 1	189,792.1	< 1	36,302.0	< 1	92,394.2	< 1
Status 4	0.0	0	0.0	0	22,578.0	< 1	4.5	< 1
Total	4,273.7	< 1	190,952.2	< 1	195,853.1	< 1	92,428.4	< 1
	State Coastal Reserve		ST Nat.Area/Preserve		Other State Lands		Private Cons. Easemt.	
	ha	%	ha	%	ha	%	ha	%
Status 1	0.0	0	688.8	< 1	0.0	0	0.0	0
Status 2	2,092.1	< 1	7,756.1	< 1	1.6	< 1	734.5	< 1
Status 3	0.0	0	4,993.5	< 1	17,642.2	< 1	56,942.2	< 1
Status 4	0.0	0	0.0	0	2,301.9	< 1	< 0.1	< 1
Total	2,092.1	< 1	13,438.4	< 1	19,945.7	< 1	57,676.8	< 1
	Private Land - No Res.		Water		Overall Total			
	ha	%	ha	%	ha	%		
Status 1	0.0	0	0.0	0	24,627.2	< 1		
Status 2	0.0	0	0.0	0	214,417.0	< 1		
Status 3	264.8	< 1	< 0.1	< 1	988,118.8	3		
Status 4	41,663,253.9	96	25,089.0	< 1	41,736,311.4	97		
Total	41,663,518.7	96	25,089.1	< 1	42,963,474.3	100		

GAP Status 1: An area having permanent protection from conversion of natural land cover and a mandated management plan in operation to maintain a natural state within which disturbance events (of natural type, frequency, and intensity) are allowed to proceed without interference or are mimicked through management.

GAP Status 2: An area having permanent protection from conversion of natural land cover and a mandated management plan in operation to maintain a primarily natural state, but which may receive use or management practices that degrade the quality of existing natural communities.

GAP Status 3: An area having permanent protection from conversion of natural land cover for the majority of the area, but subject to extractive uses of either a broad, low-intensity type or localized intense type. It also confers protection to federally listed endangered and threatened species throughout the area.

GAP Status 4: Lack of irrevocable easement or mandate to prevent conversion of natural habitat types to anthropogenic habitat types. Allows for intensive use throughout the tract. Also includes those tracts for which the existence of such restrictions or sufficient information to establish a higher status is unknown.

## PREDICTED HABITAT MODEL(S):

### Year-round Model:

Habitat Description: Occupies a wide variety of habitats, preferring areas of open country with short, mown or grazed fields. Only avoid large expanses of undisturbed non-grassland native habitats: wooded or forested areas, arid chaparral, desert, etc...(Cabe 1993). M. Rubino, 07jan05.

Elevation Mask: < 1524m

Mask of Forest Interior Avoidance: Exclude forest interiors with 120m buffer into them.

### Selected Map Units:

Functional Group	Map Unit Name
Anthropogenic	Bare Sand
Anthropogenic	Bare Soil
Anthropogenic	Deciduous Plantations
Anthropogenic	Developed Open Space
Anthropogenic	Evergreen Plantations
Anthropogenic	High Intensity Developed
Anthropogenic	Low Intensity Developed
Anthropogenic	Medium Intensity Developed
Anthropogenic	Pasture/Hay
Anthropogenic	Quarry/Strip Mine/Gravel Pit
Anthropogenic	Row Crop
Anthropogenic	Successional Shrub/Scrub (Clear Cut)
Anthropogenic	Successional Shrub/Scrub (Other)
Anthropogenic	Successional Shrub/Scrub (Utility Swath)
Forest/Woodland	East Gulf Coastal Plain Northern Dry Upland Hardwood Forest - Offsite Pine Modifier

**CITATIONS:** American Ornithologists' Union (AOU), Committee on Classification and Nomenclature. 1983. Check-list of North American Birds. Sixth Edition. American Ornithologists' Union, Allen Press, Inc., Lawrence, Kansas.

Bureau of Land Management. Life History Summaries.

Cabe, P.R. 1993. European starling (*Sturnus vulgaris*). In A. Poole and F. Gill, eds., *The Birds of North America*, No. 48. The Academy of Natural Sciences, Philadelphia and The American Ornithologists' Union, Washington, DC.

Caccamise, D. F., L. A. Lyon, and J. Fischl. 1983. Seasonal patterns in roosting flocks of starlings and common grackles. *Condor* 85:474-481.

Feare, C. 1984. *The starling*. Oxford Univ. Press. 190 pp.

Fussell, J.O. III. 1994. *A birder's guide to coastal North Carolina*. Chapel Hill and London: The University of North Carolina Press.

Glahn, J.F., et al. 1991. Impact of roost control on local urban and agricultural blackbird problems. *Wildlife Society Bulletin* 19:511-522.

Godfrey, W.E. 1966. *The birds of Canada*. National Museums of Canada. Ottawa. 428 pp.

Harrison, C. 1978. *A field guide to the nests, eggs and nestlings of North American birds*. Collins, Cleveland, Ohio.

Ingold, D. J. 1989. Nesting phenology and competition for nest sites among red-headed and red-bellied woodpeckers and European starlings. *Auk* 106:209-217.

Ingold, D. J. 1994. Influence of nest-site competition between European starlings and woodpeckers. *Wilson Bull.* 106:227-241.

Kerpez, T. A., and N. S. Smith. 1990. Competition between European starlings and native woodpeckers for nest cavities in saguaros. *Auk* 107:367-375.

Nicholson CP. 1997. *Atlas of the breeding birds of Tennessee*. Knoxville: University of Tennessee Press.

Potter, E. F., J. F. Parnell, and R. P. Teulings. 1980. *Birds of the Carolinas*. Univ. North Carolina Press, Chapel Hill. 408 pp.

Pratt, H.D., P.L. Bruner, and D.G. Berrett. 1987. *A field guide to the birds of Hawaii and the tropical Pacific*. Princeton University Press, Princeton, New Jersey. 409 pp. + 45 plates.

Raffaele, H.A. 1983. A guide to the birds of Puerto Rico and the Virgin Islands. Fondo Educativo Interamericano, San Juan, Puerto Rico. 255 pp.

Raffaele, H.A. 1989. A guide to the birds of Puerto Rico and the Virgin Islands. Revised edition. Princeton Univ. Press. 220 pp.

Terres, J.K. 1980. The Audubon Society encyclopedia of North American birds. Alfred A. Knopf, New York.

Weitzel, N. H. 1988. Nest-site competition between the European starling and native breeding birds in northwestern Nevada. Condor 90:515-517.

---

For more information:: SE-GAP Analysis Project / BaSIC  
127 David Clark Labs  
Dept. of Biology, NCSU  
Raleigh, NC 27695-7617  
(919) 513-2853  
[www.basic.ncsu.edu/segap](http://www.basic.ncsu.edu/segap)

Compiled: 15 September 2011

This data was compiled and/or developed  
by the Southeast GAP Analysis Project at  
The Biodiversity and Spatial Information  
Center, North Carolina State University.