



SOUTHEAST GAP ANALYSIS PROJECT



Species Modeling Report

Eastern Meadowlark

Sturnella magna

Taxa: Avian

Order: Passeriformes

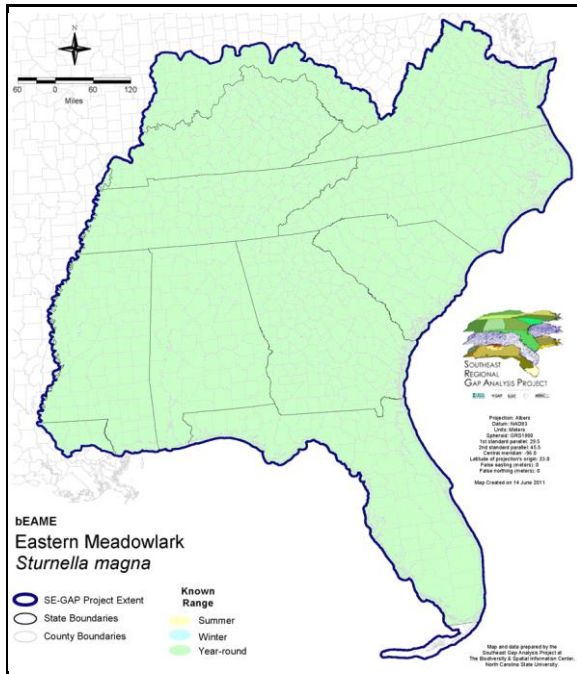
Family: Icteridae

SE-GAP Spp Code: **bEAME**

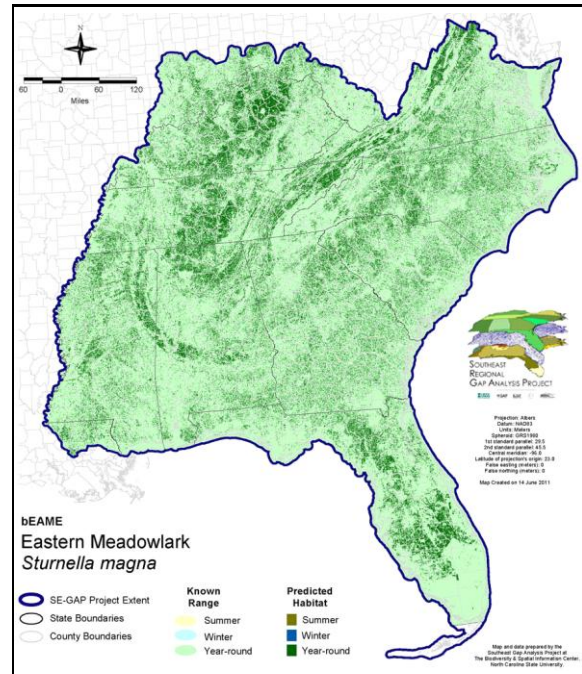
ITIS Species Code: 179034

NatureServe Element Code: ABPBXB2020

KNOWN RANGE:



PREDICTED HABITAT:



Range Map Link: http://www.basic.ncsu.edu/segap/datazip/maps/SE_Range_bEAME.pdf

Predicted Habitat Map Link: http://www.basic.ncsu.edu/segap/datazip/maps/SE_Dist_bEAME.pdf

GAP Online Tool Link: <http://www.gapservice.ncsu.edu/segap/segap/index2.php?species=bEAME>

Data Download: http://www.basic.ncsu.edu/segap/datazip/region/vert/bEAME_se00.zip

PROTECTION STATUS:

Reported on March 14, 2011

Federal Status: ---

State Status: CT (SC), CT (SC), KY (N), ME (SC), NH (SC), NJ (SC/SC), NY (PB), RI (Not Listed), WI (SC/M), QC (Non suivie)

NS Global Rank: G5

NS State Rank: AL (S5), AR (S5), AZ (S5), CO (SNA), CT (S4B), CT (S4B), DC (S1B,S4N), DE (S3), FL (SNR), GA (S5), IA (S4B,S4N), IL (S5), IN (S3N,S4B), KS (S5), KY (S5B,S5N), LA (S5), MA (S3S4B), MD (S5B,S3N), ME (S3S4B), MI (S5), MN (SNRB), MN (SNRB), MO (SNR), MS (S5B,S5N), NC (S5B,S5N), NE (S5), NH (S3B), NJ (S3B,S3N), NM (S4B,S5N), NY (S5), OH (S5), OK (S5), PA (S5B,S4N), RI (S3B), SC (SNR), SD (S2B), SD (S2B), TN (S5), TX (S5B), VA (S5), VT (S5B), VT (S5B), WI (S4B), WV (S4N,S5B), WY (SNA), AB (SNA), MB (SNA), NB (S2B), NF (SNA), NS (S1B), ON (S4B), PE (SNA), QC (S4B)

SUMMARY OF PREDICTED HABITAT BY MANAGMENT AND GAP PROTECTION STATUS:

	US FWS		US Forest Service		Tenn. Valley Author.		US DOD/ACOE	
	ha	%	ha	%	ha	%	ha	%
Status 1	2,155.3	< 1	20.6	< 1	0.0	0	0.0	0
Status 2	15,494.7	< 1	1,611.1	< 1	0.0	0	157.4	< 1
Status 3	8.4	< 1	36,959.9	< 1	16,874.3	< 1	76,772.4	< 1
Status 4	5.4	< 1	0.0	0	0.0	0	0.0	0
Total	17,663.8	< 1	38,591.6	< 1	16,874.3	< 1	76,929.8	< 1
	US Dept. of Energy		US Nat. Park Service		NOAA		Other Federal Lands	
	ha	%	ha	%	ha	%	ha	%
Status 1	0.0	0	1,110.9	< 1	0.0	0	161.8	< 1
Status 2	0.0	0	489.5	< 1	1,376.2	< 1	0.0	0
Status 3	1,610.5	< 1	11,175.0	< 1	0.0	0	2,799.5	< 1
Status 4	0.0	0	0.0	0	0.0	0	0.0	0
Total	1,610.5	< 1	12,775.4	< 1	1,376.2	< 1	2,961.4	< 1
	Native Am. Reserv.		State Park/Hist. Park		State WMA/Gameland		State Forest	
	ha	%	ha	%	ha	%	ha	%
Status 1	0.0	0	7.3	< 1	7.3	< 1	0.0	0
Status 2	0.0	0	279.8	< 1	56,503.5	< 1	10.8	< 1
Status 3	1,690.8	< 1	91,901.6	< 1	12,547.4	< 1	30,958.0	< 1
Status 4	0.0	0	0.0	0	8,785.1	< 1	< 0.1	< 1
Total	1,690.8	< 1	92,188.7	< 1	77,843.3	< 1	30,968.9	< 1
	State Coastal Reserve		ST Nat.Area/Preserve		Other State Lands		Private Cons. Easemt.	
	ha	%	ha	%	ha	%	ha	%
Status 1	0.0	0	374.4	< 1	0.0	0	0.0	0
Status 2	334.0	< 1	2,988.5	< 1	2.1	< 1	804.5	< 1
Status 3	0.0	0	3,357.8	< 1	8,031.5	< 1	47,957.2	< 1
Status 4	0.0	0	0.0	0	1,854.7	< 1	< 0.1	< 1
Total	334.0	< 1	6,720.8	< 1	9,888.3	< 1	48,761.8	< 1
	Private Land - No Res.		Water		Overall Total			
	ha	%	ha	%	ha	%	ha	%
Status 1	0.0	0	0.0	0	3,837.6 < 1			
Status 2	0.0	0	0.0	0	80,052.1 < 1			
Status 3	203.1	< 1	0.0	0	342,847.6 2			
Status 4	21,851,099.6	98	2,148.7	< 1	21,872,673.3 98			
Total	21,851,302.7	98	2,148.7	< 1	22,299,410.6 100			

GAP Status 1: An area having permanent protection from conversion of natural land cover and a mandated management plan in operation to maintain a natural state within which disturbance events (of natural type, frequency, and intensity) are allowed to proceed without interference or are mimicked through management.

GAP Status 2: An area having permanent protection from conversion of natural land cover and a mandated management plan in operation to maintain a primarily natural state, but which may receive use or management practices that degrade the quality of existing natural communities.

GAP Status 3: An area having permanent protection from conversion of natural land cover for the majority of the area, but subject to extractive uses of either a broad, low-intensity type or localized intense type. It also confers protection to federally listed endangered and threatened species throughout the area.

GAP Status 4: Lack of irrevocable easement or mandate to prevent conversion of natural habitat types to anthropogenic habitat types. Allows for intensive use throughout the tract. Also includes those tracts for which the existence of such restrictions or sufficient information to establish a higher status is unknown.

PREDICTED HABITAT MODEL(S):

Year-round Model:

Habitat Description: Eastern meadowlarks are found in open, unwooded areas covered with grass or other herbaceous growth (Skutch 1996), but is not sensitive to the density of the vegetation (Nicholson 1997). Such habitats include meadows, pastures, large lawns, fields, roadsides, and grasslands (Potter et al. 1980). They are reported as less common in hay and alfalfa fields, roadsides, orchards, golf courses, airports and marshes. They prefer good grass and litter cover (Lanyon 1995 NAB). They prefer short to medium-height grasses; fields, pastures, and other grassy places. Favor somewhat taller grasses (up to 2 feet) for nesting than for foraging (Hamel 1992). In southeastern Arizona, meadowlarks avoided recently burned grassland habitats (Southwest. Nat. 37:73).

This species nests on the ground, often in a small depression, among concealing vegetation which is arched over the nest (Skutch 1996). Males sing from fences, telephone lines, and isolated trees (Nicholson 1997). They glean insects from the surface of or beneath the ground (Skutch 1996).

An average home range size of 7.5 acres is reported (Schoener 1968).

Quoted form habitat notes K. Cook -4-27-05

Elevation Mask: < 1219m

Contiguous Patch Minimum Size (hectares): 6

Selected Map Units:

Functional Group	Map Unit Name
Anthropogenic	Pasture/Hay
Anthropogenic	Successional Grassland/Herbaceous
Anthropogenic	Successional Grassland/Herbaceous (Other)
Anthropogenic	Successional Grassland/Herbaceous (Utility Swath)
Forest/Woodland	East Gulf Coastal Plain Black Belt Calcareous Prairie and Woodland - Woodland Modifier
Prairie	Bluegrass Basin Savanna and Woodland
Prairie	East Gulf Coastal Plain Black Belt Calcareous Prairie and Woodland
Prairie	East Gulf Coastal Plain Black Belt Calcareous Prairie and Woodland - Herbaceous Modifier
Prairie	East Gulf Coastal Plain Jackson Plain Prairie and Barrens
Prairie	East Gulf Coastal Plain Jackson Prairie and Woodland
Prairie	Eastern Highland Rim Prairie and Barrens
Prairie	Eastern Highland Rim Prairie and Barrens - Dry Modifier
Prairie	Florida Dry Prairie
Prairie	Panhandle Florida Limestone Glade
Prairie	Pennyroyal Karst Plain Prairie and Barrens
Prairie	Southern Ridge and Valley Patch Prairie
Prairie	Western Highland Rim Prairie and Barrens

Selected Secondary Map Units within 60m of Primary Map Units:

Functional Group	Map Unit Name
Anthropogenic	Developed Open Space
Anthropogenic	Row Crop

- CITATIONS:** American Ornithologists' Union (AOU), Committee on Classification and Nomenclature. 1983. Check-list of North American Birds. Sixth Edition. American Ornithologists' Union, Allen Press, Inc., Lawrence, Kansas.
- Bent, A.C. 1958. Life histories of North American blackbirds, orioles, tanagers, and their allies. U.S. National Museum Bulletin 211. Washington, DC.
- Bock, C. E., J. H. Bock. 1992. Response of birds to wildfire in native versus exotic Arizona grassland. Southwest. Nat. 37: 73-81.
- Dickerman, R. W. 1989. Notes on STURNELLA MAGNA in South America with a description of a new subspecies. Bull. Br. Ornithol. Club 109:160-162.
- Droege, S., and J.R. Sauer. 1990. North American Breeding Bird Survey, annual summary, 1989. U.S. Fish and Wildlife Service, Biological Report 90(8). 22 pp.

- Ehrlich, P.R., D.S. Dobkin, and D. Wheye. 1992. Birds in jeopardy: the imperiled and extinct birds of the United States and Canada, including Hawaii and Puerto Rico. Stanford University Press, Stanford, California. 259 pp.
- Hamel, P. B. 1992. The land manager's guide to the birds of the south. The Nature Conservancy, Chapel Hill, North Carolina. 367 pp + several appendices.
- Harrison, C. 1978. A field guide to the nests, eggs and nestlings of North American birds. Collins, Cleveland, Ohio.
- Harrison, H.H. 1979. A field guide to western birds' nests. Houghton Mifflin Company, Boston. 279 pp.
- Hilty, S.L., and W.L. Brown. 1986. A guide to the birds of Colombia. Princeton University Press, Princeton, New Jersey. 836 pp.
- Jones, A.L., and P.D. Vickery. 1997. Conserving grassland birds: managing agricultural lands including hayfields, crop fields, and pastures for grassland birds. Massachusetts Audubon Society, Lincoln, MA.
- Knapton, R. W. 1988. Nesting success in higher for polygynously mated females than for monogamously mated females in the eastern meadowlark. *Auk* 105:325-329.
- Lanyon, W. E. 1957. The comparative biology of the meadowlarks (*STURNELLA*) in Wisconsin. *Nuttall*. 66 pp.
- Lanyon, W. E. 1995. Eastern Meadowlark (*Sturnella magna*). In *The Birds of North America*, No. 160 (A. Poole and F. Gill, eds.). The Academy of Natural Sciences, Philadelphia, PA, and The American Ornithologists' Union, Washington, D.C.
- Nicholson CP. 1997. Atlas of the breeding birds of Tennessee. Knoxville: University of Tennessee Press.
- Peterjohn, B.G., J.R. Sauer, and W.A. Link. 1994. The 1992 and 1993 summary of the North American Breeding Bird Survey. *Bird Populations* 2:46-61.
- Potter, E. F., J. F. Parnell, and R. P. Teulings. 1980. Birds of the Carolinas. Univ. North Carolina Press, Chapel Hill. 408 pp.
- Ridgely, R.S., and G. Tudor. 1989. The birds of South America. Vol. 1. The Oscine passerines. Univ. Texas Press, Austin. 516 pp.
- Schoener, T. W. 1968. Sizes of feeding territories among birds. *Ecology*. 49 (1):123-141.
- Sibley, C.G., and B.L. Monroe. 1990. Distribution and taxonomy of birds of the world. Yale University Press, New Haven, Connecticut. xxiv + 1111 pp.
- Simpson MB Jr. 1992. Birds of the Blue Ridge Mountains. Chapel Hill and London: University of North Carolina Press.
- Skutch, A.F. 1996. Orioles, blackbirds, and their kin. A natural history. Tuscon: University of Arizona Press. 291p.
- Stiles, F.G., and A.F. Skutch. 1989. A guide to the birds of Costa Rica. Comstock Publ. Associates, Cornell University Press, Ithaca, New York. 511 pp.
- Terres, J.K. 1980. The Audubon Society encyclopedia of North American birds. Alfred A. Knopf, New York.

For more information:: SE-GAP Analysis Project / BaSIC
 127 David Clark Labs
 Dept. of Biology, NCSU
 Raleigh, NC 27695-7617
 (919) 513-2853
www.basic.ncsu.edu/segap

Compiled: 15 September 2011

This data was compiled and/or developed by the Southeast GAP Analysis Project at The Biodiversity and Spatial Information Center, North Carolina State University.