



SOUTHEAST GAP ANALYSIS PROJECT



Species Modeling Report

Eastern Kingbird

Tyrannus tyrannus

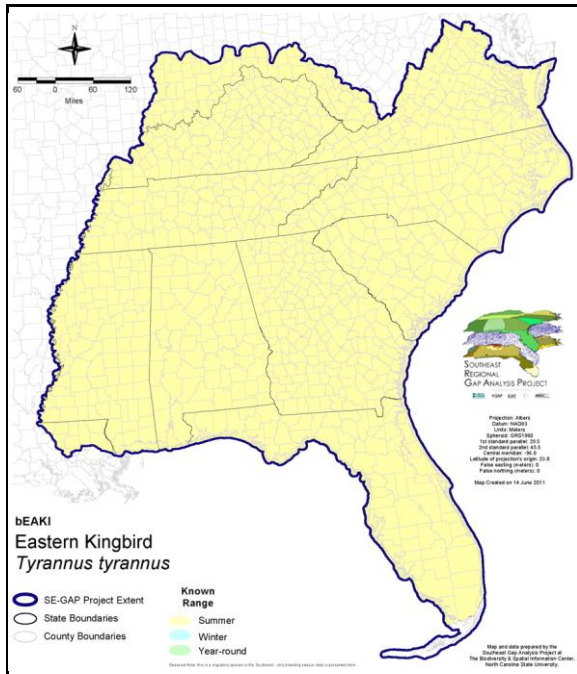
Taxa: Avian
 Order: Passeriformes
 Family: Tyrannidae

SE-GAP Spp Code: **bEAKI**

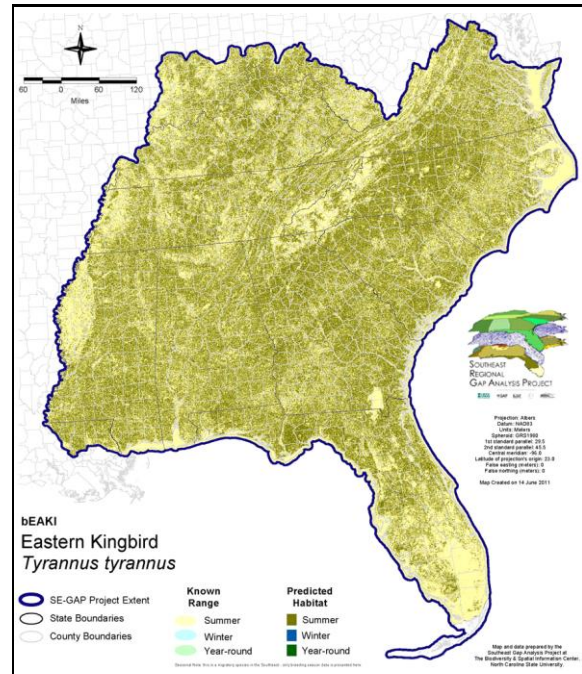
ITIS Species Code: 178279

NatureServe Element Code: ABPAE52060

KNOWN RANGE:



PREDICTED HABITAT:



Range Map Link: http://www.basic.ncsu.edu/segap/datazip/maps/SE_Range_bEAKI.pdf

Predicted Habitat Map Link: http://www.basic.ncsu.edu/segap/datazip/maps/SE_Dist_bEAKI.pdf

GAP Online Tool Link: <http://www.gapservice.ncsu.edu/segap/segap/index2.php?species=bEAKI>

Data Download: http://www.basic.ncsu.edu/segap/datazip/region/vert/bEAKI_se00.zip

PROTECTION STATUS:

Reported on March 14, 2011

Federal Status: ---

State Status: ID (P), ID (P), KY (N), ME (SC), NJ (D/D), NV (YES), NY (PB), RI (Not Listed), UT (None), BC (4 (2005)), QC (Non suivie)

NS Global Rank: G5

NS State Rank: AK (SNA), AL (S5B), AR (S5B,S5N), AZ (S1S2M), CA (S1), CO (S5B), CO (S5B), CT (S5B), CT (S5B), DC (S4B), DE (S5B), FL (SNRB), GA (S5), IA (S5B,S5N), ID (S4B), ID (S4B), IL (S5), IN (S4B), KS (S5B), KY (S5B), LA (S5B), MA (S5B), MD (S5B), ME (S4S5B), MI (S5), MN (SNRB), MO (SNRB), MS (S5B), MS (S5B), MT (S5B), MT (S5B), NC (S5B), NC (S5B), ND (SNRB), NE (S5), NH (S5B), NJ (S4B), NM (S4B,S4N), NV (S1B), NY (S5), OH (S5), OK (S5B), OR (S4), PA (S5B), RI (S5B,S5N), SC (SNRB), SD (S5B), SD (S5B), TN (S5), TX (S4B), UT (S3?B), VA (S5), VT (S5B), VT (S5B), WA (S4S5B), WA (S4S5B), WI (S5B), WI (S5B), WV (S5B), WY (S5B,S5N), AB (S5), BC (S4S5B), LB (SNA), MB (S4B), MB (S4B), NB (S4B), NF (S1B,S2M), NF (S1B,S2M), NS (S4B), NT (SNRB), ON (S4B), PE (S4B), QC (S5B), SK (S5B,S5M), YT (SU)

SUMMARY OF PREDICTED HABITAT BY MANAGMENT AND GAP PROTECTION STATUS:

	US FWS		US Forest Service		Tenn. Valley Author.		US DOD/ACOE	
	ha	%	ha	%	ha	%	ha	%
Status 1	61,905.2	< 1	5,527.7	< 1	0.0	0	0.0	0
Status 2	98,218.1	< 1	81,941.4	< 1	0.0	0	3,101.8	< 1
Status 3	1,759.8	< 1	910,107.0	2	56,224.0	< 1	489,327.1	< 1
Status 4	71.7	< 1	0.0	0	0.0	0	54.1	< 1
Total	161,954.8	< 1	997,576.1	2	56,224.0	< 1	492,483.0	< 1
	US Dept. of Energy		US Nat. Park Service		NOAA		Other Federal Lands	
	ha	%	ha	%	ha	%	ha	%
Status 1	0.0	0	33,659.4	< 1	37.0	< 1	8,997.8	< 1
Status 2	0.0	0	7,098.1	< 1	6,334.2	< 1	43.5	< 1
Status 3	54,888.9	< 1	162,203.4	< 1	0.0	0	3,445.4	< 1
Status 4	0.0	0	0.0	0	0.0	0	0.0	0
Total	54,888.9	< 1	202,960.9	< 1	6,371.2	< 1	12,486.6	< 1
	Native Am. Reserv.		State Park/Hist. Park		State WMA/Gameland		State Forest	
	ha	%	ha	%	ha	%	ha	%
Status 1	0.0	0	741.2	< 1	28.6	< 1	0.0	0
Status 2	0.0	0	3,711.9	< 1	365,230.5	< 1	258.4	< 1
Status 3	10,107.3	< 1	357,641.2	< 1	118,789.8	< 1	286,586.1	< 1
Status 4	0.0	0	< 0.1	< 1	62,442.5	< 1	42.3	< 1
Total	10,107.3	< 1	362,094.3	< 1	546,491.4	1	286,886.8	< 1
	State Coastal Reserve		ST Nat.Area/Preserve		Other State Lands		Private Cons. Easemt.	
	ha	%	ha	%	ha	%	ha	%
Status 1	0.0	0	4,490.4	< 1	0.0	0	0.0	0
Status 2	6,576.7	< 1	35,641.9	< 1	5.6	< 1	2,606.7	< 1
Status 3	0.0	0	14,615.6	< 1	25,316.3	< 1	92,347.5	< 1
Status 4	0.0	0	0.0	0	2,868.0	< 1	< 0.1	< 1
Total	6,576.7	< 1	54,747.9	< 1	28,189.9	< 1	94,954.2	< 1
	Private Land - No Res.		Water		Overall Total			
	ha	%	ha	%	ha	%		
Status 1	0.0	0	0.0	0	115,387.2	< 1		
Status 2	0.0	0	0.0	0	610,768.6	1		
Status 3	554.7	< 1	0.0	0	2,583,914.0	7		
Status 4	49,232,833.0	92	47,651.0	< 1	49,408,333.5	92		
Total	49,233,387.7	92	47,651.0	< 1	52,718,403.3	100		

GAP Status 1: An area having permanent protection from conversion of natural land cover and a mandated management plan in operation to maintain a natural state within which disturbance events (of natural type, frequency, and intensity) are allowed to proceed without interference or are mimicked through management.

GAP Status 2: An area having permanent protection from conversion of natural land cover and a mandated management plan in operation to maintain a primarily natural state, but which may receive use or management practices that degrade the quality of existing natural communities.

GAP Status 3: An area having permanent protection from conversion of natural land cover for the majority of the area, but subject to extractive uses of either a broad, low-intensity type or localized intense type. It also confers protection to federally listed endangered and threatened species throughout the area.

GAP Status 4: Lack of irrevocable easement or mandate to prevent conversion of natural habitat types to anthropogenic habitat types. Allows for intensive use throughout the tract. Also includes those tracts for which the existence of such restrictions or sufficient information to establish a higher status is unknown.

PREDICTED HABITAT MODEL(S):

Summer Model:

Habitat Description: The eastern kingbird is a woodland savannah and open savannah bird. However, given suitable nesting conditions it will use other open habitat types such as (aspen, parkland, recently burned forest, beaver ponds, golf courses, and forested river valleys and urban environments with tall trees and scattered open spaces (Murphy 1996). It is often seen on utility wires and along roads & fences in farm country. It is reported to prefer open areas near ponds (B84BUC01AL). Can breed in dead stumps and snags in swamps and marshes, shrubby streambanks, fields with scattered shrubs and trees, orchards shelterbelts, and along woodland edges in forested regions (Murphy 1996). Georgia GAP cites studies that show that kingbirds occupy the middle of the extremes between open agriculture, devoid of trees, and dense forest.

Nests average 10 to 20 feet above the ground, the nest is usually well out from the trunk on a limb (Potter et al 1980). Often it is exposed on the canopy edge or on dead snag (Murphy 1996). Odd nest site locations such as on top of a fencepost, in martin gourds, rain gauges, and old oriole nests are sometimes found (Kaufman 1996, Potter et al 1980). Occasionally builds in a hole in a hollow tree (B76IMH01AL).

Limited research suggests an average home range size of 20.7 acres (Schoener 1968)

They are migrants in Costa Rica roost in isolated clumps of trees or amid tall coarse grass (Stiles and Skutch 1989).

Partially quoted from state habitat notes - K. Cook 4-8-05

Additional information:

McIntyre (1995) found that of 20 sites (control =10 > 13.25 ha., large = 5 between 10 and 13.25 ha. And small =5 < 3.25 ha.) in the Georgia Piedmont, Eastern kingbirds were detected only in large and small tracts of forest, suggesting the avoidance of dense forest. (Therefore I chose 250m as the into forest buffer). Hadidian et. al (1997) found that Eastern Kingbirds are common breeders in Washington DC across a variety of land uses, from low to high density residential to parks and industrial areas. Data on the distance into forest edges at which kingbirds can nest is lacking. K. Cook 4-8-05

Elevation Mask: < 914m

Mask of Forest/Open Ecotone: Include within 125m of ecotone edge.

Selected Map Units:

Functional Group	Map Unit Name
Anthropogenic	Deciduous Plantations
Anthropogenic	Developed Open Space
Anthropogenic	Evergreen Plantations
Anthropogenic	Low Intensity Developed
Anthropogenic	Medium Intensity Developed
Anthropogenic	Pasture/Hay
Anthropogenic	Successional Grassland/Herbaceous
Anthropogenic	Successional Grassland/Herbaceous (Other)
Anthropogenic	Successional Grassland/Herbaceous (Utility Swath)
Anthropogenic	Successional Shrub/Scrub (Clear Cut)
Anthropogenic	Successional Shrub/Scrub (Other)
Anthropogenic	Successional Shrub/Scrub (Utility Swath)
Bald	Central Appalachian Montane Rocky Bald - Herbaceous Modifier
Bald	Central Appalachian Montane Rocky Bald - Shrub Modifier
Bald	Southern Appalachian Grass and Shrub Bald - Herbaceous Modifier
Bald	Southern Appalachian Grass and Shrub Bald - Shrub Modifier
Forest/Woodland	Alabama Ketona Glade and Woodland
Forest/Woodland	Allegheny-Cumberland Dry Oak Forest and Woodland
Forest/Woodland	Allegheny-Cumberland Dry Oak Forest and Woodland - Hardwood Modifier
Forest/Woodland	Allegheny-Cumberland Dry Oak Forest and Woodland - Pine Modifier
Forest/Woodland	Appalachian Hemlock-Hardwood Forest

Forest/Woodland	Appalachian Serpentine Woodland
Forest/Woodland	Appalachian Shale Barrens
Forest/Woodland	Atlantic Coastal Plain Dry and Dry-Mesic Oak Forest
Forest/Woodland	Atlantic Coastal Plain Fall-Line Sandhills Longleaf Pine Woodland - Loblolly Modifier
Forest/Woodland	Atlantic Coastal Plain Fall-line Sandhills Longleaf Pine Woodland - Offsite Hardwood Modifier
Forest/Woodland	Atlantic Coastal Plain Fall-line Sandhills Longleaf Pine Woodland - Open Understory Modifier
Forest/Woodland	Atlantic Coastal Plain Fall-line Sandhills Longleaf Pine Woodland - Scrub/Shrub Understory Modifier
Forest/Woodland	Atlantic Coastal Plain Mesic Hardwood and Mixed Forest
Forest/Woodland	Atlantic Coastal Plain Northern Mixed Oak-Heath Forest
Forest/Woodland	Atlantic Coastal Plain Upland Longleaf Pine Woodland
Forest/Woodland	Central Appalachian Alkaline Glade and Woodland
Forest/Woodland	Central Appalachian Oak and Pine Forest
Forest/Woodland	Central Appalachian Pine-Oak Rocky Woodland
Forest/Woodland	Central Interior Highlands Calcareous Glade and Barrens
Forest/Woodland	Central Interior Highlands Dry Acidic Glade and Barrens
Forest/Woodland	Cumberland Sandstone Glade and Barrens
Forest/Woodland	East Gulf Coastal Plain Black Belt Calcareous Prairie and Woodland - Woodland Modifier
Forest/Woodland	East Gulf Coastal Plain Interior Shortleaf Pine-Oak Forest - Hardwood Modifier
Forest/Woodland	East Gulf Coastal Plain Interior Shortleaf Pine-Oak Forest - Mixed Modifier
Forest/Woodland	East Gulf Coastal Plain Interior Shortleaf Pine-Oak Forest - Pine Modifier
Forest/Woodland	East Gulf Coastal Plain Interior Upland Longleaf Pine Woodland - Loblolly Modifier
Forest/Woodland	East Gulf Coastal Plain Interior Upland Longleaf Pine Woodland - Offsite Hardwood Modifier
Forest/Woodland	East Gulf Coastal Plain Interior Upland Longleaf Pine Woodland - Open Understory Modifier
Forest/Woodland	East Gulf Coastal Plain Interior Upland Longleaf Pine Woodland - Scrub/Shrub Modifier
Forest/Woodland	East Gulf Coastal Plain Limestone Forest
Forest/Woodland	East Gulf Coastal Plain Northern Dry Upland Hardwood Forest
Forest/Woodland	East Gulf Coastal Plain Northern Dry Upland Hardwood Forest - Offsite Pine Modifier
Forest/Woodland	East Gulf Coastal Plain Northern Loess Bluff Forest
Forest/Woodland	East Gulf Coastal Plain Northern Loess Plain Oak-Hickory Upland - Hardwood Modifier
Forest/Woodland	East Gulf Coastal Plain Northern Mesic Hardwood Forest
Forest/Woodland	East Gulf Coastal Plain Southern Loess Bluff Forest
Forest/Woodland	East Gulf Coastal Plain Southern Mesic Slope Forest
Forest/Woodland	Florida Longleaf Pine Sandhill - Open Understory Modifier
Forest/Woodland	Florida Longleaf Pine Sandhill - Scrub/Shrub Understory Modifier
Forest/Woodland	Florida Peninsula Inland Scrub
Forest/Woodland	Nashville Basin Limestone Glade
Forest/Woodland	Northeastern Interior Dry Oak Forest - Mixed Modifier
Forest/Woodland	Northeastern Interior Dry Oak Forest - Virginia/Pitch Pine Modifier
Forest/Woodland	Northeastern Interior Dry Oak Forest-Hardwood Modifier
Forest/Woodland	Northern Atlantic Coastal Plain Dry Hardwood Forest
Forest/Woodland	Ridge and Valley Calcareous Valley Bottom Glade and Woodland
Forest/Woodland	South Florida Pine Rockland
Forest/Woodland	South-Central Interior Mesophytic Forest
Forest/Woodland	Southeastern Interior Longleaf Pine Woodland
Forest/Woodland	Southern and Central Appalachian Cove Forest
Forest/Woodland	Southern and Central Appalachian Mafic Glade and Barrens
Forest/Woodland	Southern and Central Appalachian Oak Forest
Forest/Woodland	Southern and Central Appalachian Oak Forest - Xeric
Forest/Woodland	Southern Appalachian Low Mountain Pine Forest
Forest/Woodland	Southern Coastal Plain Dry Upland Hardwood Forest
Forest/Woodland	Southern Coastal Plain Oak Dome and Hammock
Forest/Woodland	Southern Interior Low Plateau Dry-Mesic Oak Forest
Forest/Woodland	Southern Interior Low Plateau Dry-Mesic Oak Forest - Evergreen Modifier
Forest/Woodland	Southern Piedmont Dry Oak-(Pine) Forest - Hardwood Modifier
Forest/Woodland	Southern Piedmont Dry Oak-(Pine) Forest - Loblolly Pine Modifier
Forest/Woodland	Southern Piedmont Dry Oak-(Pine) Forest - Mixed Modifier

Forest/Woodland	Southern Piedmont Dry Oak-Heath Forest - Hardwood Modifier
Forest/Woodland	Southern Piedmont Dry Oak-Heath Forest - Mixed Modifier
Forest/Woodland	Southern Piedmont Dry Oak-Heath Forest - Virginia/Pitch Pine Modifier
Forest/Woodland	Southern Piedmont Glade and Barrens
Forest/Woodland	Southern Piedmont Mafic Hardpan Woodland
Forest/Woodland	Southern Piedmont Mesic Forest
Forest/Woodland	Southern Piedmont Northern Triassic Basin Dry Forest
Forest/Woodland	Southern Ridge and Valley Dry Calcareous Forest
Forest/Woodland	Southern Ridge and Valley Dry Calcareous Forest - Hardwood Modifier
Forest/Woodland	Southern Ridge and Valley Dry Calcareous Forest - Pine Modifier
Freshwater Tidal Marsh & Wetland	Atlantic Coastal Plain Central Fresh-Oligohaline Tidal Marsh
Freshwater Tidal Marsh & Wetland	Atlantic Coastal Plain Embayed Region Tidal Freshwater Marsh
Freshwater Tidal Marsh & Wetland	Atlantic Coastal Plain Northern Fresh and Oligohaline Tidal Marsh
Freshwater Tidal Marsh & Wetland	Florida Big Bend Fresh-Oligohaline Tidal Marsh
Prairie	Bluegrass Basin Savanna and Woodland
Prairie	East Gulf Coastal Plain Black Belt Calcareous Prairie and Woodland
Prairie	East Gulf Coastal Plain Black Belt Calcareous Prairie and Woodland - Herbaceous Modifier
Prairie	East Gulf Coastal Plain Jackson Plain Prairie and Barrens
Prairie	East Gulf Coastal Plain Jackson Prairie and Woodland
Prairie	Eastern Highland Rim Prairie and Barrens
Prairie	Eastern Highland Rim Prairie and Barrens - Dry Modifier
Prairie	Florida Dry Prairie
Prairie	Panhandle Florida Limestone Glade
Prairie	Pennyroyal Karst Plain Prairie and Barrens
Prairie	Southern Ridge and Valley Patch Prairie
Prairie	Western Highland Rim Prairie and Barrens
Rock Outcrop	Central Interior Acidic Cliff and Talus
Rock Outcrop	Central Interior Calcareous Cliff and Talus
Rock Outcrop	North-Central Appalachian Acidic Cliff and Talus
Rock Outcrop	North-Central Appalachian Circumneutral Cliff and Talus
Rock Outcrop	Southern Appalachian Granitic Dome
Rock Outcrop	Southern Piedmont Granite Flatrock
Wetlands	Atlantic Coastal Plain Blackwater Stream Floodplain Forest - Forest Modifier
Wetlands	Atlantic Coastal Plain Blackwater Stream Floodplain Forest - Herbaceous Modifier
Wetlands	Atlantic Coastal Plain Brownwater Stream Floodplain Forest
Wetlands	Atlantic Coastal Plain Clay-Based Carolina Bay Forested Wetland
Wetlands	Atlantic Coastal Plain Clay-Based Carolina Bay Herbaceous Wetland
Wetlands	Atlantic Coastal Plain Depression Pondshore
Wetlands	Atlantic Coastal Plain Large Natural Lakeshore
Wetlands	Atlantic Coastal Plain Nonriverine Swamp and Wet Hardwood Forest - Taxodium/Nyssa Modifier
Wetlands	Atlantic Coastal Plain Nonriverine Swamp and Wet Hardwood Forest - Oak Dominated Modifier
Wetlands	Atlantic Coastal Plain Northern Basin Peat Swamp
Wetlands	Atlantic Coastal Plain Northern Basin Swamp and Wet Hardwood Forest
Wetlands	Atlantic Coastal Plain Northern Pondshore
Wetlands	Atlantic Coastal Plain Northern Wet Longleaf Pine Savanna and Flatwoods
Wetlands	Atlantic Coastal Plain Peatland Pocosin
Wetlands	Atlantic Coastal Plain Sandhill Seep
Wetlands	Atlantic Coastal Plain Small Blackwater River Floodplain Forest
Wetlands	Atlantic Coastal Plain Small Brownwater River Floodplain Forest
Wetlands	Atlantic Coastal Plain Southern Wet Pine Savanna and Flatwoods
Wetlands	Atlantic Coastal Plain Streamhead Seepage Swamp, Pocosin, and Baygall
Wetlands	Atlantic Coastal Plain Xeric River Dune
Wetlands	Central Appalachian Floodplain - Forest Modifier
Wetlands	Central Appalachian Floodplain - Herbaceous Modifier
Wetlands	Central Appalachian Riparian - Forest Modifier
Wetlands	Central Appalachian Riparian - Herbaceous Modifier

Wetlands	Central Florida Herbaceous Pondshore
Wetlands	Central Florida Herbaceous Seep
Wetlands	Central Florida Pine Flatwoods
Wetlands	Central Interior Highlands and Appalachian Sinkhole and Depression Pond
Wetlands	East Gulf Coastal Plain Interior Shrub Bog
Wetlands	East Gulf Coastal Plain Jackson Plain Dry Flatwoods - Open Understory Modifier
Wetlands	East Gulf Coastal Plain Jackson Plain Dry Flatwoods - Scrub/Shrub Understory Modifier
Wetlands	East Gulf Coastal Plain Large River Floodplain Forest - Forest Modifier
Wetlands	East Gulf Coastal Plain Large River Floodplain Forest - Herbaceous Modifier
Wetlands	East Gulf Coastal Plain Near-Coast Pine Flatwoods - Offsite Hardwood Modifier
Wetlands	East Gulf Coastal Plain Near-Coast Pine Flatwoods - Open Understory Modifier
Wetlands	East Gulf Coastal Plain Near-Coast Pine Flatwoods - Scrub/Shrub Understory Modifier
Wetlands	East Gulf Coastal Plain Northern Depression Pondshore
Wetlands	East Gulf Coastal Plain Northern Seepage Swamp
Wetlands	East Gulf Coastal Plain Small Stream and River Floodplain Forest
Wetlands	East Gulf Coastal Plain Southern Depression Pondshore
Wetlands	East Gulf Coastal Plain Southern Loblolly-Hardwood Flatwoods
Wetlands	East Gulf Coastal Plain Treeless Savanna and Wet Prairie
Wetlands	Floridian Highlands Freshwater Marsh
Wetlands	Lower Mississippi River Bottomland and Floodplain Forest
Wetlands	Lower Mississippi River Bottomland Depressions - Forest Modifier
Wetlands	Lower Mississippi River Bottomland Depressions - Herbaceous Modifier
Wetlands	Mississippi River Low Floodplain (Bottomland) Forest
Wetlands	Mississippi River Riparian Forest
Wetlands	North-Central Appalachian Acidic Swamp
Wetlands	North-Central Appalachian Seepage Fen
Wetlands	North-Central Interior and Appalachian Rich Swamp
Wetlands	South Florida Bayhead Swamp
Wetlands	South Florida Cypress Dome
Wetlands	South Florida Freshwater Slough and Gator Hole
Wetlands	South Florida Hardwood Hammock
Wetlands	South Florida Pine Flatwoods
Wetlands	South Florida Pond-Apple/Popash Slough
Wetlands	South Florida Wet Marl Prairie
Wetlands	South Florida Willow Head
Wetlands	South-Central Interior Large Floodplain - Forest Modifier
Wetlands	South-Central Interior Large Floodplain - Herbaceous Modifier
Wetlands	South-Central Interior Small Stream and Riparian
Wetlands	South-Central Interior/Upper Coastal Plain Wet Flatwoods
Wetlands	Southern and Central Appalachian Bog and Fen
Wetlands	Southern Appalachian Seepage Wetland
Wetlands	Southern Coastal Plain Blackwater River Floodplain Forest
Wetlands	Southern Coastal Plain Herbaceous Seepage Bog
Wetlands	Southern Coastal Plain Hydric Hammock
Wetlands	Southern Coastal Plain Nonriverine Basin Swamp
Wetlands	Southern Coastal Plain Nonriverine Cypress Dome
Wetlands	Southern Coastal Plain Seepage Swamp and Baygall
Wetlands	Southern Coastal Plain Spring-run Stream Aquatic Vegetation
Wetlands	Southern Piedmont Large Floodplain Forest - Forest Modifier
Wetlands	Southern Piedmont Large Floodplain Forest - Herbaceous Modifier
Wetlands	Southern Piedmont Seepage Wetland
Wetlands	Southern Piedmont Small Floodplain and Riparian Forest
Wetlands	Southern Piedmont/Ridge and Valley Upland Depression Swamp
Wetlands	Western Highland Rim Seepage Fen

CITATIONS: American Ornithologists' Union (AOU), Committee on Classification and Nomenclature. 1983. Check-list of North American Birds. Sixth

Edition. American Ornithologists' Union, Allen Press, Inc., Lawrence, Kansas.

Bent, A.C. 1942. Life histories of North American flycatchers, larks, swallows, and their allies. U.S. National Museum Bulletin 179. Washington, DC.

Blancher, P. J., and R. J. Robertson. 1985. A comparison of Eastern Kingbird breeding biology in lakeshore and upland habitats. *Can. J. Zool.* 63: 2305–2312.

Davis, D.E. 1955. Observations on the breeding biology of kingbirds. *Condor* 57: 208–212.

DeGraaf, R.M., and J.H. Rappole. 1995. Neotropical migratory birds:natural history, distribution, and population change. Comstock Publishing Associates, Ithaca, NY.

Ehrlich, P.R., D.S. Dobkin, and D. Wheye. 1988. *The birder's handbook:a field guide to the natural history of North American birds.* Simon and Shuster, Inc., New York. xxx + 785 pp.

Hadidian, J., J. Sauer, C. Swarth, P. Handy, S. Droege. 1997. A citywide breeding bird survey for Washington, D.C. *Urban Ecosystems.* 1: 87–102.

Hamel, P. B. 1992. *The land manager's guide to the birds of the south.* The Nature Conservancy, Chapel Hill, North Carolina. 367 pp + several appendices.

Harrison, C. 1978. *A field guide to the nests, eggs and nestlings of North American birds.* Collins, Cleveland, Ohio.

Harrison, H.H. 1975. *A field guide to bird's nests in the U.S. east of the Mississippi River.* Houghton Mifflin Company, Boston, Massachusetts. 257 p.

Harrison, H.H. 1979. *A field guide to western birds' nests.* Houghton Mifflin Company, Boston. 279 pp.

Hilty, S.L., and W.L. Brown. 1986. *A guide to the birds of Colombia.* Princeton University Press, Princeton, New Jersey. 836 pp.

Kaufman K. 1996. *Lives of North American Birds.* Boston, New York: Houghton Mifflin Company.

Keast, A., and E. S. Morton. 1980. *Migrant birds in the Neotropics; ecology, distribution, and conservation.* Smithsonian Inst. Press, Washington, D.C.

McIntyre, N. E. 1995. Effects of forest patch size on avian diversity. *Landscape Ecology* 10:85-99.

Murphy, M. T. 1996. Eastern Kingbird (*Tyrannus tyrannus*). In *The Birds of North America*, No. 253 (A. Poole and F. Gill, eds.). The Academy of Natural Sciences, Philadelphia, PA, and The American Ornithologists' Union, Washington, D.C.

Potter, E. F., J. F. Parnell, and R. P. Teulings. 1980. *Birds of the Carolinas.* Univ. North Carolina Press, Chapel Hill. 408 pp.

Ridgely, R. S., and J. A. Gwynne, Jr. 1989. *A guide to the birds of Panama with Costa Rica, Nicaragua, and Honduras.* Second edition. Princeton Univ. Press, Princeton, New Jersey. 534 pp.

Schoener, T. W. 1968. Sizes of feeding territories among birds. *Ecology.* 49 (1):123-141.

Simpson MB Jr. 1992. *Birds of the Blue Ridge Mountains.* Chapel Hill and London: University of North Carolina Press.

Stiles, F.G., and A.F. Skutch. 1989. *A guide to the birds of Costa Rica.* Comstock Publ. Associates, Cornell University Press, Ithaca, New York. 511 pp.

Terres, J.K. 1980. *The Audubon Society encyclopedia of North American birds.* Alfred A. Knopf, New York.

Van Wynsberghe, N. R., J. D. Rising, and D. I. MacKenzie. 1992. Geographic variation in size of the eastern kingbird. *Wilson Bull.* 104:612-629.

For more information:: SE-GAP Analysis Project / BaSIC
127 David Clark Labs
Dept. of Biology, NCSU
Raleigh, NC 27695-7617
(919) 513-2853
www.basic.ncsu.edu/segap

Compiled: 15 September 2011

This data was compiled and/or developed
by the Southeast GAP Analysis Project at
The Biodiversity and Spatial Information
Center, North Carolina State University.