



# SOUTHEAST GAP ANALYSIS PROJECT



## Species Modeling Report

### Eastern Bluebird

*Sialia sialis*

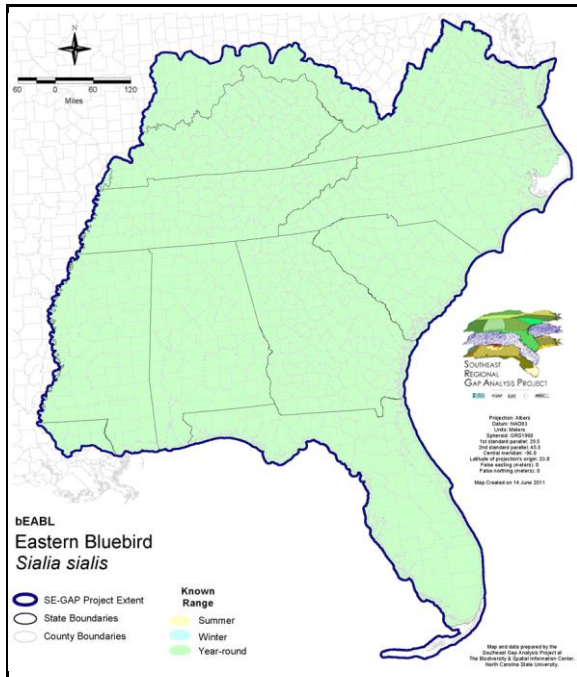
Taxa: Avian  
 Order: Passeriformes  
 Family: Turdidae

SE-GAP Spp Code: **bEABL**

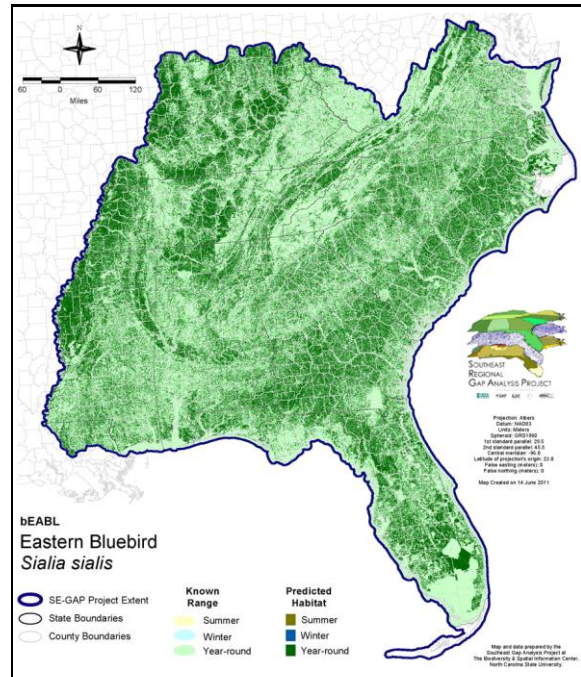
ITIS Species Code: 179801

NatureServe Element Code: ABPBJ15010

#### KNOWN RANGE:



#### PREDICTED HABITAT:



Range Map Link: [http://www.basic.ncsu.edu/segap/datazip/maps/SE\\_Range\\_bEABL.pdf](http://www.basic.ncsu.edu/segap/datazip/maps/SE_Range_bEABL.pdf)

Predicted Habitat Map Link: [http://www.basic.ncsu.edu/segap/datazip/maps/SE\\_Dist\\_bEABL.pdf](http://www.basic.ncsu.edu/segap/datazip/maps/SE_Dist_bEABL.pdf)

GAP Online Tool Link: <http://www.gapservice.ncsu.edu/segap/segap/index2.php?species=bEABL>

Data Download: [http://www.basic.ncsu.edu/segap/datazip/region/vert/bEABL\\_se00.zip](http://www.basic.ncsu.edu/segap/datazip/region/vert/bEABL_se00.zip)

#### PROTECTION STATUS:

Reported on March 14, 2011

Federal Status: ---

State Status: KY (N), NJ (S/S), NY (PB), RI (Not Listed), UT (None), ON (NAR), QC (Non suivie)

NS Global Rank: G5

NS State Rank: AL (S5), AR (S4), AZ (S4), CO (S2B), CO (S2B), CT (S4), DC (S4N), DE (S5), FL (SNR), GA (S4S5), IA (S4B,S5N), IL (S5), IN (S4B), IN (S4B), KS (S5), KY (S5B,S5N), LA (S5), MA (S3B,S4N), MD (S5B,S4N), ME (S4B), MI (S5), MN (SNRB), MN (SNRB), MO (SNR), MS (S5B,S5N), MT (S2B), NC (S5B,S5N), ND (SU), NE (S3S4), NH (S4B), NJ (S4B,S4N), NM (S1B,S5N), NY (S5), OH (S5), OK (S5), PA (S5B,S5N), RI (S3B), SC (SNR), SD (S4B), SD (S4B), TN (S5), TX (S5B), UT (SNA), VA (S5), VT (S4B,S4N), WI (S4B), WI (S4B), WV (S4B,S4N), WY (S2), WY (S2), AB (SNA), AB (SNA), MB (S4B), MB (S4B), NB (S3B), NF (SNA), NS (S2S3B), ON (S5B), PE (S1B), QC (S5B), SK (S4B), SK (S4B)

**SUMMARY OF PREDICTED HABITAT BY MANAGMENT AND GAP PROTECTION STATUS:**

	US FWS		US Forest Service		Tenn. Valley Author.		US DOD/ACOE	
	ha	%	ha	%	ha	%	ha	%
Status 1	11,343.2	< 1	975.2	< 1	0.0	0	0.0	0
Status 2	57,402.6	< 1	16,141.8	< 1	0.0	0	755.2	< 1
Status 3	467.7	< 1	270,325.0	< 1	29,560.1	< 1	357,209.2	< 1
Status 4	27.2	< 1	0.0	0	0.0	0	202.5	< 1
Total	69,240.8	< 1	287,442.0	< 1	29,560.1	< 1	358,166.9	< 1
	US Dept. of Energy		US Nat. Park Service		NOAA		Other Federal Lands	
	ha	%	ha	%	ha	%	ha	%
Status 1	0.0	0	11,089.8	< 1	13.3	< 1	1,272.8	< 1
Status 2	0.0	0	2,942.9	< 1	4,082.4	< 1	21.2	< 1
Status 3	14,435.0	< 1	30,456.4	< 1	0.0	0	4,349.3	< 1
Status 4	0.0	0	0.0	0	0.0	0	0.0	0
Total	14,435.0	< 1	44,489.1	< 1	4,095.7	< 1	5,643.4	< 1
	Native Am. Reserv.		State Park/Hist. Park		State WMA/Gameland		State Forest	
	ha	%	ha	%	ha	%	ha	%
Status 1	0.0	0	178.5	< 1	10.5	< 1	0.0	0
Status 2	0.0	0	1,148.9	< 1	158,614.8	< 1	58.2	< 1
Status 3	4,356.5	< 1	207,768.1	< 1	43,937.6	< 1	129,287.7	< 1
Status 4	0.0	0	0.0	0	24,405.8	< 1	16.7	< 1
Total	4,356.5	< 1	209,095.4	< 1	226,968.8	< 1	129,362.6	< 1
	State Coastal Reserve		ST Nat.Area/Preserve		Other State Lands		Private Cons. Easemt.	
	ha	%	ha	%	ha	%	ha	%
Status 1	0.0	0	1,355.2	< 1	0.0	0	0.0	0
Status 2	1,899.7	< 1	11,831.1	< 1	2.1	< 1	1,295.6	< 1
Status 3	0.0	0	7,476.8	< 1	20,208.6	< 1	73,436.5	< 1
Status 4	0.0	0	0.0	0	2,644.7	< 1	< 0.1	< 1
Total	1,899.7	< 1	20,663.2	< 1	22,855.4	< 1	74,732.1	< 1
	Private Land - No Res.		Water		Overall Total			
	ha	%	ha	%	ha	%	ha	%
Status 1	0.0	0	0.0	0			26,238.6	< 1
Status 2	0.0	0	0.0	0			256,196.5	< 1
Status 3	331.2	< 1	< 0.1	< 1			1,193,605.8	3
Status 4	43,494,862.1	96	22,249.5	< 1			43,568,787.3	96
Total	43,495,193.3	96	22,249.6	< 1			45,044,828.3	100

GAP Status 1: An area having permanent protection from conversion of natural land cover and a mandated management plan in operation to maintain a natural state within which disturbance events (of natural type, frequency, and intensity) are allowed to proceed without interference or are mimicked through management.

GAP Status 2: An area having permanent protection from conversion of natural land cover and a mandated management plan in operation to maintain a primarily natural state, but which may receive use or management practices that degrade the quality of existing natural communities.

GAP Status 3: An area having permanent protection from conversion of natural land cover for the majority of the area, but subject to extractive uses of either a broad, low-intensity type or localized intense type. It also confers protection to federally listed endangered and threatened species throughout the area.

GAP Status 4: Lack of irrevocable easement or mandate to prevent conversion of natural habitat types to anthropogenic habitat types. Allows for intensive use throughout the tract. Also includes those tracts for which the existence of such restrictions or sufficient information to establish a higher status is unknown.

## PREDICTED HABITAT MODEL(S):

### Year-round Model:

Habitat Description: Bluebirds forage in short sparse vegetation (Nicholson 1997), and nest in cavities located in fairly isolated trees (Alsop 1991). These requirements can be found in a variety of semi-open habitats with scattered trees, such as farms, roadsides, burned areas, forest clearings, open pine woods, suburbs (Kaufman 1996), swamps (Harrison 1975), lawns, and golf courses (Nicholson 1997). Blue-birds are absent on the barrier islands (Fussell and Lyons 1990).

They Require a nesting cavity located away from other overhanging trees (Alsop 1991). Cavities may include old woodpecker holes, birdhouses (Harrison 1975), mailboxes, or holes in fence posts (Potter et al. 1980).

K.Cook - 4-17-05

Elevation Mask: < 1219m

### Selected Map Units:

Functional Group	Map Unit Name
Anthropogenic	Developed Open Space
Anthropogenic	Low Intensity Developed
Anthropogenic	Pasture/Hay
Anthropogenic	Row Crop
Anthropogenic	Successional Grassland/Herbaceous
Anthropogenic	Successional Grassland/Herbaceous (Other)
Anthropogenic	Successional Grassland/Herbaceous (Utility Swath)
Anthropogenic	Successional Shrub/Scrub (Clear Cut)
Anthropogenic	Successional Shrub/Scrub (Other)
Anthropogenic	Successional Shrub/Scrub (Utility Swath)
Forest/Woodland	Alabama Ketona Glade and Woodland
Forest/Woodland	Appalachian Shale Barrens
Forest/Woodland	Atlantic Coastal Plain Fall-line Sandhills Longleaf Pine Woodland - Open Understory Modifier
Forest/Woodland	Atlantic Coastal Plain Upland Longleaf Pine Woodland
Forest/Woodland	Central Appalachian Alkaline Glade and Woodland
Forest/Woodland	Central Interior Highlands Calcareous Glade and Barrens
Forest/Woodland	Central Interior Highlands Dry Acidic Glade and Barrens
Forest/Woodland	Cumberland Sandstone Glade and Barrens
Forest/Woodland	East Gulf Coastal Plain Black Belt Calcareous Prairie and Woodland - Woodland Modifier
Forest/Woodland	East Gulf Coastal Plain Interior Upland Longleaf Pine Woodland - Open Understory Modifier
Forest/Woodland	Florida Longleaf Pine Sandhill - Open Understory Modifier
Forest/Woodland	Nashville Basin Limestone Glade
Forest/Woodland	Ridge and Valley Calcareous Valley Bottom Glade and Woodland
Forest/Woodland	Southeastern Interior Longleaf Pine Woodland
Forest/Woodland	Southern and Central Appalachian Mafic Glade and Barrens
Forest/Woodland	Southern Piedmont Glade and Barrens
Prairie	Bluegrass Basin Savanna and Woodland
Prairie	East Gulf Coastal Plain Black Belt Calcareous Prairie and Woodland
Prairie	East Gulf Coastal Plain Black Belt Calcareous Prairie and Woodland - Herbaceous Modifier
Prairie	East Gulf Coastal Plain Jackson Plain Prairie and Barrens
Prairie	East Gulf Coastal Plain Jackson Prairie and Woodland
Prairie	Eastern Highland Rim Prairie and Barrens
Prairie	Eastern Highland Rim Prairie and Barrens - Dry Modifier
Prairie	Florida Dry Prairie
Prairie	Panhandle Florida Limestone Glade
Prairie	Pennyroyal Karst Plain Prairie and Barrens
Prairie	Southern Ridge and Valley Patch Prairie
Prairie	Western Highland Rim Prairie and Barrens

- CITATIONS:** Alsop FJ III. 1991. Birds of the Smokies. Gatlinburg: Great Smoky Mountains Natural History Association.
- American Ornithologists' Union (AOU), Committee on Classification and Nomenclature. 1983. Check-list of North American Birds. Sixth Edition. American Ornithologists' Union, Allen Press, Inc., Lawrence, Kansas.
- Bent, A. C. 1949. Life histories of North American thrushes, kinglets, and their allies. U. S. Nat. Mus. Bull.196. 452 pp., 51 pls.
- Brewer, R., G.A. McPeck, and R.J. Adams, Jr. 1991. The Atlas of Breeding Birds of Michigan. Michigan State University Press, East Lansing, Michigan. xvii + 594 pp.
- Ehrlich, P.R., D.S. Dobkin, and D. Wheye. 1992. Birds in jeopardy:the imperiled and extinct birds of the United States and Canada, including Hawaii and Puerto Rico. Stanford University Press, Stanford, California. 259 pp.
- Fussell, J. III and M. Lyons. 1990. Birds of the Outer Banks [pamphlet]. Eastern National Parks and Monument Association Coastal Wildlife Refuge Society.
- Grooms, S., and D. Peterson. 1991. Bluebirds! NorthWord Press, Inc. 160 pp.
- Harrison, C. 1978. A field guide to the nests, eggs and nestlings of North American birds. Collins, Cleveland, Ohio.
- Harrison, H.H. 1975. A field guide to bird's nests in the U.S. east of the Mississippi River. Houghton Mifflin Company, Boston, Massachusetts. 257 p.
- Harrison, H.H. 1979. A field guide to western birds' nests. Houghton Mifflin Company, Boston. 279 pp.
- Kaufman K. 1996. Lives of North American Birds. Boston, New York: Houghton Mifflin Company.
- Krieg, D. 1971. The behavior patterns of the eastern bluebird. 476 pp.
- Lumsden, H. G. 1989. Test of nest box preferences of eastern bluebirds, SIALIA SIALIS, and tree swallows, TACHYCINETA BICOLOR. Can. Field-Nat. 103:595-597.
- McComb, W. C., W. H. Davis, and P. N. Allaire. 1987. Excluding starlings from a slot-entrance bluebird nest box. Wildl. Soc. Bull. 15:204-207.
- Mitchell, W.A. 1988. Songbird nest boxes. Section 5.1.8, U.S. Army Corps of Engineers, Wildlife Resources Management Manual. Tech. Rep. EL-88-19. Waterways Experiment Station, Vicksburg, Mississippi. 48 pp.
- Nicholson CP. 1997. Atlas of the breeding birds of Tennessee. Knoxville: University of Tennessee Press.
- Palmer-Ball, B.L., Jr. 1996. The Kentucky Breeding Bird Atlas. The University Press of Kentucky, Lexington.
- Parren, S. G. 1991. Evaluation of nest-box sites selected by eastern bluebirds, tree swallows, and house wrens. Wildl. Soc. Bull. 19:270-277.
- Peterson, R. P. 1987. A new bluebird nesting structure for highway rights-of-way. Wildl. Soc. Bull. 15:200-204.
- Potter, E. F., J. F. Parnell, and R. P. Teulings. 1980. Birds of the Carolinas. Univ. North Carolina Press, Chapel Hill. 408 pp.
- Sauer, J. R., and S. Droege. 1990. Recent population trends of the eastern bluebird. Wilson Bull. 102:239-252.
- Terres, J.K. 1980. The Audubon Society encyclopedia of North American birds. Alfred A. Knopf, New York.

---

For more information:: SE-GAP Analysis Project / BaSIC  
127 David Clark Labs  
Dept. of Biology, NCSU  
Raleigh, NC 27695-7617  
(919) 513-2853  
[www.basic.ncsu.edu/segap](http://www.basic.ncsu.edu/segap)

Compiled: 15 September 2011

This data was compiled and/or developed by the Southeast GAP Analysis Project at The Biodiversity and Spatial Information Center, North Carolina State University.