



SOUTHEAST GAP ANALYSIS PROJECT



Species Modeling Report

Common Yellowthroat

Geothlypis trichas

Taxa: Avian

Order: Passeriformes

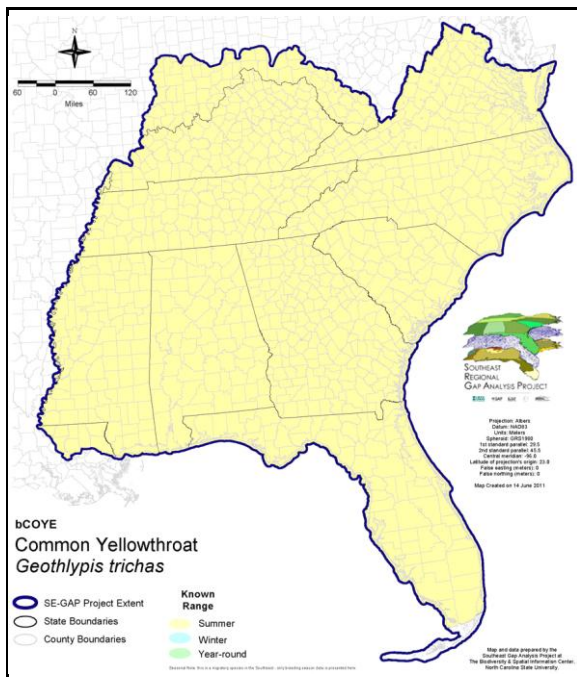
Family: Parulidae

SE-GAP Spp Code: **bCOYE**

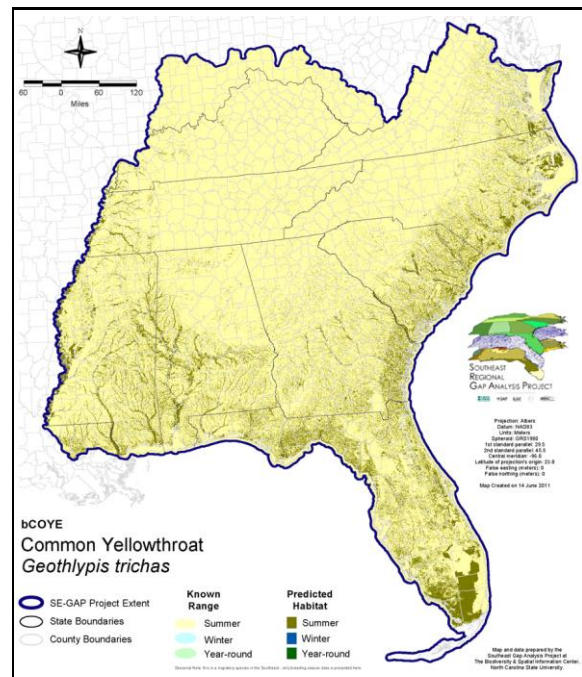
ITIS Species Code: 178944

NatureServe Element Code: ABPBX12010

KNOWN RANGE:



PREDICTED HABITAT:



Range Map Link: http://www.basic.ncsu.edu/segap/datazip/maps/SE_Range_bCOYE.pdf

Predicted Habitat Map Link: http://www.basic.ncsu.edu/segap/datazip/maps/SE_Dist_bCOYE.pdf

GAP Online Tool Link: <http://www.gapservice.ncsu.edu/segap/segap/index2.php?species=bCOYE>

Data Download: http://www.basic.ncsu.edu/segap/datazip/region/vert/bCOYE_se00.zip

PROTECTION STATUS:

Reported on March 14, 2011

Federal Status: ---

State Status: ID (P), ID (P), KY (N), NJ (S/S), NV (YES), NY (PB), RI (Not Listed), UT (None), BC (4 (2005)), QC (Non suivie)

NS Global Rank: G5

NS State Rank: AK (S4B), AL (S5), AR (S3N,S4B), AZ (S4), CA (S3), CO (S4B), CO (S4B), CT (S5B), CT (S5B), DC (S3B,S4N), DE (S5B), FL (SNR), GA (S5), IA (S5B,S5N), ID (S5B), ID (S5B), IL (S5), IN (S4B), KS (S5B), KY (S5B), LA (S3S4N,S5B), MA (S5B), MD (S5B), ME (S4S5B), MI (S5), MN (SNRB), MO (SNRB), MS (S5B), MS (S5B), MT (S5B), MT (S5B), NC (S5B,S4N), ND (SNRB), NE (S5), NH (S5B), NJ (S4B), NM (S4B,S4N), NV (S3B), NY (S5), OH (S5), OK (S5B), OR (S5), PA (S5B), RI (S5B), SC (SNR), SD (S5B), SD (S5B), TN (S5), TX (S5B), UT (S3S4B), VA (S5), VT (S5B), VT (S5B), WA (S5B), WA (S5B), WI (S5B), WI (S5B), WV (S2N,S5B), WY (S4B,S4N), AB (S5), BC (S5B), LB (S3?B), MB (S5B), MB (S5B), NB (S5B), NF (S5B), NS (S5B), NT (SNRB), ON (S5B), PE (S5B), QC (S5B), SK (S5B), YT (S5B)

SUMMARY OF PREDICTED HABITAT BY MANAGMENT AND GAP PROTECTION STATUS:

	US FWS		US Forest Service		Tenn. Valley Author.		US DOD/ACOE	
	ha	%	ha	%	ha	%	ha	%
Status 1	147,279.7	< 1	6,146.2	< 1	0.0	0	0.0	0
Status 2	221,429.0	1	31,991.1	< 1	0.0	0	2,176.6	< 1
Status 3	2,365.3	< 1	386,188.6	2	8,009.7	< 1	200,205.5	1
Status 4	39.3	< 1	0.0	0	0.0	0	18.7	< 1
Total	371,113.3	2	424,325.9	3	8,009.7	< 1	202,400.8	1
	US Dept. of Energy		US Nat. Park Service		NOAA		Other Federal Lands	
	ha	%	ha	%	ha	%	ha	%
Status 1	0.0	0	384,150.7	2	1,063.4	< 1	10,099.3	< 1
Status 2	0.0	0	30,151.4	< 1	43,733.3	< 1	61.4	< 1
Status 3	22,145.4	< 1	195,378.9	1	0.0	0	1,866.7	< 1
Status 4	0.0	0	3.0	< 1	0.0	0	0.0	0
Total	22,145.4	< 1	609,684.2	4	44,796.7	< 1	12,027.3	< 1
	Native Am. Reserv.		State Park/Hist. Park		State WMA/Gameland		State Forest	
	ha	%	ha	%	ha	%	ha	%
Status 1	0.0	0	232.7	< 1	3.1	< 1	0.0	0
Status 2	0.0	0	1,319.9	< 1	711,075.3	4	28.4	< 1
Status 3	2,155.5	< 1	457,599.4	3	119,959.0	< 1	175,647.6	1
Status 4	0.0	0	0.0	0	13,410.9	< 1	8.0	< 1
Total	2,155.5	< 1	459,152.0	3	844,448.3	5	175,684.1	1
	State Coastal Reserve		ST Nat.Area/Preserve		Other State Lands		Private Cons. Easemt.	
	ha	%	ha	%	ha	%	ha	%
Status 1	0.0	0	2,840.7	< 1	0.0	0	0.0	0
Status 2	39,434.3	< 1	64,642.1	< 1	2.5	< 1	1,698.8	< 1
Status 3	0.0	0	14,295.2	< 1	9,617.1	< 1	82,685.7	< 1
Status 4	0.0	0	0.0	0	1,073.8	< 1	0.0	0
Total	39,434.3	< 1	81,777.9	< 1	10,693.4	< 1	84,384.5	< 1
	Private Land - No Res.		Water		Overall Total			
	ha	%	ha	%	ha	%	ha	%
Status 1	0.0	< 1	0.0	0			551,815.8	3
Status 2	1.0	< 1	0.0	< 1			1,147,745.3	7
Status 3	824.5	< 1	0.0	0			1,678,944.2	12
Status 4	12,694,882.3	77	80,454.6	< 1			12,803,262.4	77
Total	12,695,708.0	77	80,454.8	< 1			16,181,767.6	100

GAP Status 1: An area having permanent protection from conversion of natural land cover and a mandated management plan in operation to maintain a natural state within which disturbance events (of natural type, frequency, and intensity) are allowed to proceed without interference or are mimicked through management.

GAP Status 2: An area having permanent protection from conversion of natural land cover and a mandated management plan in operation to maintain a primarily natural state, but which may receive use or management practices that degrade the quality of existing natural communities.

GAP Status 3: An area having permanent protection from conversion of natural land cover for the majority of the area, but subject to extractive uses of either a broad, low-intensity type or localized intense type. It also confers protection to federally listed endangered and threatened species throughout the area.

GAP Status 4: Lack of irrevocable easement or mandate to prevent conversion of natural habitat types to anthropogenic habitat types. Allows for intensive use throughout the tract. Also includes those tracts for which the existence of such restrictions or sufficient information to establish a higher status is unknown.

PREDICTED HABITAT MODEL(S):

Summer Model:

Habitat Description: Commonly found in the dense vegetation surrounding sloughs and islands, along the edges of swamps and creeks (Griscom and Sprunt 1957), and in bogs (Dunn and Garrett 1997). On the coastal plain, breeds in salt (Ehrlich et al. 1988), fresh, and brackish marshes, wet shrub thickets, and pocosins (Fussell 1994). Also found in the dense early successional growth (Nicholson 1997) of drier habitats such as open forests (Dunn and Garrett 1997), brushy fields, hedgerows, thickets, (Potter et al. 1980), stream borders, woodland openings (Simpson 1992) and edges (Ehrlich et al. 1988). At high elevations, usually found along streams bordered by deciduous shrubs (Alsop 1991). Yellowthroats will also utilize low wet vegetated areas in pinelands and prairies (Stevenson and Anderson 1994) and less frequently, dry upland pine forests with undergrowth (Guzy & Ritchison 1999). Nest is built in a clump of grass, sedges, or reeds (Nicholson 1997) very close to the ground or the surface of water and concealed in bushes, grasses or reeds (Potter et al. 1980), which often form a canopy over the nest (Nicholson 1997). Insects are gleaned low in the vegetation or in damp ground or mud. After breeding, may forage higher in shrubs and small trees (Dunn and Garrett 1997). Amy Silvano 6jun05

***Portions quoted directly from compiled habitat. Amy Silvano 6jun05

Ecosystem Classifiers: Evergreen (excluding juniper & pitch pine modifiers), maritime, Disturbed successional, pasture/hay, & All Wetlands. Amy Silvano 7jun05

Hydrography Mask:

Utilizes wet vegetation features with buffers of 60m from and unlimited into selected vegetation features.

Selected Map Units:

Functional Group	Map Unit Name
Anthropogenic	Developed Open Space
Anthropogenic	Evergreen Plantations
Anthropogenic	Successional Grassland/Herbaceous
Anthropogenic	Successional Grassland/Herbaceous (Other)
Anthropogenic	Successional Grassland/Herbaceous (Utility Swath)
Anthropogenic	Successional Shrub/Scrub (Clear Cut)
Anthropogenic	Successional Shrub/Scrub (Other)
Anthropogenic	Successional Shrub/Scrub (Utility Swath)
Brackish Tidal Marsh & Wetland	Atlantic Coastal Plain Central Salt and Brackish Tidal Marsh
Brackish Tidal Marsh & Wetland	Atlantic Coastal Plain Embayed Region Tidal Salt and Brackish Marsh
Brackish Tidal Marsh & Wetland	Atlantic Coastal Plain Indian River Lagoon Tidal Marsh
Brackish Tidal Marsh & Wetland	Atlantic Coastal Plain Northern Sea-Level Fen
Brackish Tidal Marsh & Wetland	Atlantic Coastal Plain Northern Tidal Salt Marsh
Brackish Tidal Marsh & Wetland	Atlantic Coastal Plain Northern Tidal Wooded Swamp
Brackish Tidal Marsh & Wetland	Atlantic Coastal Plain Southern Tidal Wooded Swamp
Brackish Tidal Marsh & Wetland	East Gulf Coastal Plain Tidal Wooded Swamp
Brackish Tidal Marsh & Wetland	Florida Big Bend Salt-Brackish Tidal Marsh
Brackish Tidal Marsh & Wetland	Mississippi Sound Salt and Brackish Tidal Marsh
Brackish Tidal Marsh & Wetland	South Florida Everglades Sawgrass Marsh
Brackish Tidal Marsh & Wetland	South Florida Mangrove Swamp
Brackish Tidal Marsh & Wetland	Southwest Florida Perched Barriers Salt Swamp and Lagoon - Mangrove Modifier
Brackish Tidal Marsh & Wetland	Southwest Florida Perched Barriers Salt Swamp and Lagoon - Marsh Modifier
Coastal Dune & Freshwater Wetland	Atlantic and Gulf Coastal Plain Interdunal Wetland
Coastal Dune & Freshwater Wetland	Atlantic Coastal Plain Northern Dune and Maritime Grassland
Coastal Dune & Freshwater Wetland	Atlantic Coastal Plain Southern Dune and Maritime Grassland
Coastal Dune & Freshwater Wetland	East Gulf Coastal Plain Dune and Coastal Grassland
Coastal Dune & Freshwater Wetland	Southwest Florida Dune and Coastal Grassland
Forest/Woodland	Allegheny-Cumberland Dry Oak Forest and Woodland
Forest/Woodland	Allegheny-Cumberland Dry Oak Forest and Woodland - Hardwood Modifier
Forest/Woodland	Allegheny-Cumberland Dry Oak Forest and Woodland - Pine Modifier
Forest/Woodland	Atlantic Coastal Plain Central Maritime Forest

Forest/Woodland	Atlantic Coastal Plain Dry and Dry-Mesic Oak Forest
Forest/Woodland	Atlantic Coastal Plain Fall-Line Sandhills Longleaf Pine Woodland - Loblolly Modifier
Forest/Woodland	Atlantic Coastal Plain Fall-line Sandhills Longleaf Pine Woodland - Offsite Hardwood Modifier
Forest/Woodland	Atlantic Coastal Plain Fall-line Sandhills Longleaf Pine Woodland - Scrub/Shrub Understory Modifier
Forest/Woodland	Atlantic Coastal Plain Northern Maritime Forest
Forest/Woodland	East Gulf Coastal Plain Interior Shortleaf Pine-Oak Forest - Hardwood Modifier
Forest/Woodland	East Gulf Coastal Plain Interior Shortleaf Pine-Oak Forest - Pine Modifier
Forest/Woodland	East Gulf Coastal Plain Interior Upland Longleaf Pine Woodland - Loblolly Modifier
Forest/Woodland	East Gulf Coastal Plain Interior Upland Longleaf Pine Woodland - Offsite Hardwood Modifier
Forest/Woodland	East Gulf Coastal Plain Interior Upland Longleaf Pine Woodland - Scrub/Shrub Modifier
Forest/Woodland	East Gulf Coastal Plain Limestone Forest
Forest/Woodland	East Gulf Coastal Plain Maritime Forest
Forest/Woodland	East Gulf Coastal Plain Northern Dry Upland Hardwood Forest
Forest/Woodland	East Gulf Coastal Plain Northern Dry Upland Hardwood Forest - Offsite Pine Modifier
Forest/Woodland	East Gulf Coastal Plain Northern Loess Plain Oak-Hickory Upland - Hardwood Modifier
Forest/Woodland	Florida Longleaf Pine Sandhill - Scrub/Shrub Understory Modifier
Forest/Woodland	Mississippi Delta Maritime Forest
Forest/Woodland	Northeastern Interior Dry Oak Forest-Hardwood Modifier
Forest/Woodland	Northern Atlantic Coastal Plain Dry Hardwood Forest
Forest/Woodland	Southeast Florida Coastal Strand and Maritime Hammock
Forest/Woodland	Southern and Central Appalachian Oak Forest
Forest/Woodland	Southern Coastal Plain Dry Upland Hardwood Forest
Forest/Woodland	Southern Interior Low Plateau Dry-Mesic Oak Forest
Forest/Woodland	Southern Interior Low Plateau Dry-Mesic Oak Forest - Evergreen Modifier
Forest/Woodland	Southern Piedmont Dry Oak-(Pine) Forest - Hardwood Modifier
Forest/Woodland	Southern Piedmont Dry Oak-(Pine) Forest - Loblolly Pine Modifier
Forest/Woodland	Southern Piedmont Dry Oak-Heath Forest - Hardwood Modifier
Forest/Woodland	Southern Ridge and Valley Dry Calcareous Forest
Forest/Woodland	Southern Ridge and Valley Dry Calcareous Forest - Hardwood Modifier
Forest/Woodland	Southern Ridge and Valley Dry Calcareous Forest - Pine Modifier
Forest/Woodland	Southwest Florida Coastal Strand and Maritime Hammock
Freshwater Tidal Marsh & Wetland	Atlantic Coastal Plain Central Fresh-Oligohaline Tidal Marsh
Freshwater Tidal Marsh & Wetland	Atlantic Coastal Plain Embayed Region Tidal Freshwater Marsh
Freshwater Tidal Marsh & Wetland	Atlantic Coastal Plain Northern Fresh and Oligohaline Tidal Marsh
Freshwater Tidal Marsh & Wetland	Florida Big Bend Fresh-Oligohaline Tidal Marsh
Prairie	Bluegrass Basin Savanna and Woodland
Prairie	East Gulf Coastal Plain Black Belt Calcareous Prairie and Woodland
Prairie	East Gulf Coastal Plain Jackson Plain Prairie and Barrens
Prairie	East Gulf Coastal Plain Jackson Prairie and Woodland
Wetlands	Atlantic Coastal Plain Blackwater Stream Floodplain Forest - Forest Modifier
Wetlands	Atlantic Coastal Plain Blackwater Stream Floodplain Forest - Herbaceous Modifier
Wetlands	Atlantic Coastal Plain Brownwater Stream Floodplain Forest
Wetlands	Atlantic Coastal Plain Clay-Based Carolina Bay Forested Wetland
Wetlands	Atlantic Coastal Plain Clay-Based Carolina Bay Herbaceous Wetland
Wetlands	Atlantic Coastal Plain Depression Pondshore
Wetlands	Atlantic Coastal Plain Large Natural Lakeshore
Wetlands	Atlantic Coastal Plain Nonriverine Swamp and Wet Hardwood Forest - Taxodium/Nyssa Modifier
Wetlands	Atlantic Coastal Plain Nonriverine Swamp and Wet Hardwood Forest - Oak Dominated Modifier
Wetlands	Atlantic Coastal Plain Northern Basin Peat Swamp
Wetlands	Atlantic Coastal Plain Northern Basin Swamp and Wet Hardwood Forest
Wetlands	Atlantic Coastal Plain Northern Pondshore
Wetlands	Atlantic Coastal Plain Northern Wet Longleaf Pine Savanna and Flatwoods
Wetlands	Atlantic Coastal Plain Peatland Pocosin
Wetlands	Atlantic Coastal Plain Sandhill Seep
Wetlands	Atlantic Coastal Plain Small Blackwater River Floodplain Forest
Wetlands	Atlantic Coastal Plain Small Brownwater River Floodplain Forest

Wetlands	Atlantic Coastal Plain Southern Wet Pine Savanna and Flatwoods
Wetlands	Atlantic Coastal Plain Streamhead Seepage Swamp, Pocosin, and Baygall
Wetlands	Central Appalachian Floodplain - Forest Modifier
Wetlands	Central Appalachian Floodplain - Herbaceous Modifier
Wetlands	Central Appalachian Riparian - Forest Modifier
Wetlands	Central Appalachian Riparian - Herbaceous Modifier
Wetlands	Central Florida Herbaceous Pondshore
Wetlands	Central Florida Herbaceous Seep
Wetlands	Central Florida Pine Flatwoods
Wetlands	Central Interior Highlands and Appalachian Sinkhole and Depression Pond
Wetlands	East Gulf Coastal Plain Interior Shrub Bog
Wetlands	East Gulf Coastal Plain Jackson Plain Dry Flatwoods - Open Understory Modifier
Wetlands	East Gulf Coastal Plain Jackson Plain Dry Flatwoods - Scrub/Shrub Understory Modifier
Wetlands	East Gulf Coastal Plain Large River Floodplain Forest - Forest Modifier
Wetlands	East Gulf Coastal Plain Large River Floodplain Forest - Herbaceous Modifier
Wetlands	East Gulf Coastal Plain Near-Coast Pine Flatwoods - Offsite Hardwood Modifier
Wetlands	East Gulf Coastal Plain Near-Coast Pine Flatwoods - Open Understory Modifier
Wetlands	East Gulf Coastal Plain Near-Coast Pine Flatwoods - Scrub/Shrub Understory Modifier
Wetlands	East Gulf Coastal Plain Northern Depression Pondshore
Wetlands	East Gulf Coastal Plain Northern Seepage Swamp
Wetlands	East Gulf Coastal Plain Small Stream and River Floodplain Forest
Wetlands	East Gulf Coastal Plain Southern Depression Pondshore
Wetlands	East Gulf Coastal Plain Southern Loblolly-Hardwood Flatwoods
Wetlands	East Gulf Coastal Plain Treeless Savanna and Wet Prairie
Wetlands	Floridian Highlands Freshwater Marsh
Wetlands	Lower Mississippi River Bottomland and Floodplain Forest
Wetlands	Lower Mississippi River Bottomland Depressions - Forest Modifier
Wetlands	Lower Mississippi River Bottomland Depressions - Herbaceous Modifier
Wetlands	Mississippi River Low Floodplain (Bottomland) Forest
Wetlands	Mississippi River Riparian Forest
Wetlands	North-Central Appalachian Acidic Swamp
Wetlands	North-Central Appalachian Seepage Fen
Wetlands	North-Central Interior and Appalachian Rich Swamp
Wetlands	South Florida Bayhead Swamp
Wetlands	South Florida Dwarf Cypress Savanna
Wetlands	South Florida Freshwater Slough and Gator Hole
Wetlands	South Florida Pine Flatwoods
Wetlands	South Florida Pond-Apple/Popash Slough
Wetlands	South Florida Wet Marl Prairie
Wetlands	South Florida Willow Head
Wetlands	South-Central Interior Large Floodplain - Forest Modifier
Wetlands	South-Central Interior Large Floodplain - Herbaceous Modifier
Wetlands	South-Central Interior Small Stream and Riparian
Wetlands	South-Central Interior/Upper Coastal Plain Wet Flatwoods
Wetlands	Southern and Central Appalachian Bog and Fen
Wetlands	Southern Appalachian Seepage Wetland
Wetlands	Southern Coastal Plain Blackwater River Floodplain Forest
Wetlands	Southern Coastal Plain Herbaceous Seepage Bog
Wetlands	Southern Coastal Plain Nonriverine Basin Swamp
Wetlands	Southern Coastal Plain Seepage Swamp and Baygall
Wetlands	Southern Coastal Plain Spring-run Stream Aquatic Vegetation
Wetlands	Southern Piedmont Large Floodplain Forest - Forest Modifier
Wetlands	Southern Piedmont Large Floodplain Forest - Herbaceous Modifier
Wetlands	Southern Piedmont Seepage Wetland
Wetlands	Southern Piedmont Small Floodplain and Riparian Forest
Wetlands	Southern Piedmont/Ridge and Valley Upland Depression Swamp

CITATIONS:

- Alsop FJ III. 1991. Birds of the Smokies. Gatlinburg: Great Smoky Mountains Natural History Association.
- American Ornithologists' Union (AOU), Committee on Classification and Nomenclature. 1983. Check-list of North American Birds. Sixth Edition. American Ornithologists' Union, Allen Press, Inc., Lawrence, Kansas.
- Ball, R. M., Jr., and J. C. Avise. 1992. Mitochondrial DNA phylogenetic differentiation among avian populations and the evolutionary significance of subspecies. *Auk* 109:626-636.
- Bent, A.C. 1953. Life histories of North American wood warblers. U.S. Natl. Mus. Bull. 203. Washington, D.C.
- Dunn, J.L., and K.L. Garrett. 1997. A field guide to warblers of North America. Houghton Mifflin Company, Boston.
- Ehrlich, P.R., D.S. Dobkin, and D. Wheye. 1988. The birder's handbook: a field guide to the natural history of North American birds. Simon and Schuster, Inc., New York. xxx + 785 pp.
- Fussell, J. III and M. Lyons. 1990. Birds of the Outer Banks [pamphlet]. Eastern National Parks and Monument Association Coastal Wildlife Refuge Society.
- Fussell, J.O. III. 1994. A birder's guide to coastal North Carolina. Chapel Hill and London: The University of North Carolina Press.
- Griscom, L and A. Sprunt Jr. 1957. The warblers of America. New York: Devin-Adair Company. 356 p.
- Griscom, L., and A. Sprunt, Jr. 1979. The warblers of America. Doubleday and Co., Garden City, New York. 302 pp.
- Guzy, M.J. and G. Ritchison. 1999. Common yellowthroat (*Geothlypis trichas*). In A. Poole and F. Gill, eds., *The Birds of North America*, No. 448. The Academy of Natural Sciences, Philadelphia and The American Ornithologists' Union, Washington, DC.
- Hagan, J.M., III, and D.W. Johnston, editors. 1992. Ecology and conservation of neotropical migrant landbirds. Smithsonian Institution Press, Washington, D.C. xiii + 609 pp.
- Harrison, C. 1978. A field guide to the nests, eggs and nestlings of North American birds. Collins, Cleveland, Ohio.
- Harrison, H.H. 1979. A field guide to western birds' nests. Houghton Mifflin Company, Boston. 279 pp.
- Harrison, H.H. 1984. Wood warblers' world. Simon and Schuster, New York. 335 pp.
- James, F.C., D.A. Wiedenfeld, and C.E. McCulloch. 1992. Trends in breeding populations of warblers: declines in the southern highlands and increases in the lowlands. Pages 43-56 in J.M. Hagan III and D.W. Johnston, editors. Ecology and conservation of neotropical migrant landbirds. Smithsonian Institution Press, Washington, D.C. xiii + 609 pp.
- Morimoto, D. C., and F. E. Wasserman. 1991. Dispersion patterns and habitat associations of rufous-sided towhees, common yellowthroats, and prairie warblers in the southeastern Massachusetts pine barrens. *Auk* 108:264-276.
- National Geographic Society (NGS). 1983. Field guide to the birds of North America. National Geographic Society, Washington, D.C.
- Nicholson CP. 1997. Atlas of the breeding birds of Tennessee. Knoxville: University of Tennessee Press.
- Potter, E. F., J. F. Parnell, and R. P. Teulings. 1980. Birds of the Carolinas. Univ. North Carolina Press, Chapel Hill. 408 pp.
- Raffaele, H.A. 1983. A guide to the birds of Puerto Rico and the Virgin Islands. Fondo Educativo Interamericano, San Juan, Puerto Rico. 255 pp.
- Ridgely, R.S., and G. Tudor. 1989. The birds of South America. Vol. 1. The Oscine passerines. Univ. Texas Press, Austin. 516 pp.
- Sauer, J.R., and S. Droege. 1992. Geographical patterns in population trends of neotropical migrants in North America. Pages 26-42 in J.M. Hagan III and D.W. Johnston, editors. Ecology and conservation of neotropical migrant landbirds. Smithsonian Institution Press, Washington, D.C. xiii + 609 pp.
- Simpson MB Jr. 1992. Birds of the Blue Ridge Mountains. Chapel Hill and London: University of North Carolina Press.
- Stevenson, H. M., and B. H. Anderson. 1994. The birdlife of Florida. University Press of Florida, Gainesville. 892 pp.
- Stiles, F.G., and A.F. Skutch. 1989. A guide to the birds of Costa Rica. Comstock Publ. Associates, Cornell University Press, Ithaca, New York. 511 pp.
- Terres, J.K. 1980. The Audubon Society encyclopedia of North American birds. Alfred A. Knopf, New York.

For more information:: SE-GAP Analysis Project / BaSIC
127 David Clark Labs
Dept. of Biology, NCSU
Raleigh, NC 27695-7617
(919) 513-2853
www.basic.ncsu.edu/segap

Compiled: 15 September 2011

This data was compiled and/or developed
by the Southeast GAP Analysis Project at
The Biodiversity and Spatial Information
Center, North Carolina State University.