



# SOUTHEAST GAP ANALYSIS PROJECT



## Species Modeling Report

### Common Moorhen

*Gallinula chloropus*

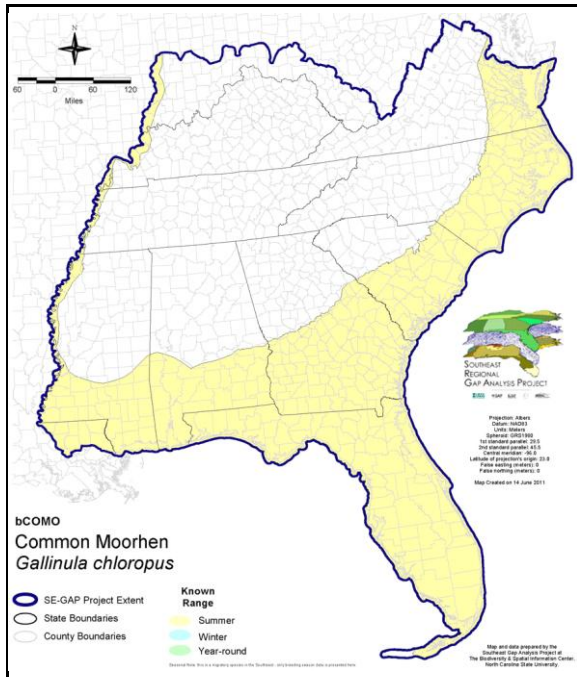
Taxa: Avian  
Order: Gruiformes  
Family: Rallidae

SE-GAP Spp Code: **bCOMO**

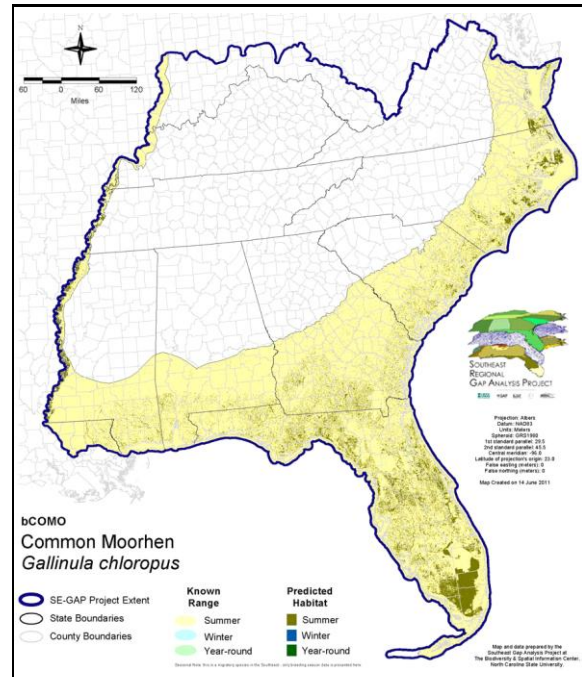
ITIS Species Code: 176284

NatureServe Element Code: ABNME13010

#### KNOWN RANGE:



#### PREDICTED HABITAT:



Range Map Link: [http://www.basic.ncsu.edu/segap/datazip/maps/SE\\_Range\\_bCOMO.pdf](http://www.basic.ncsu.edu/segap/datazip/maps/SE_Range_bCOMO.pdf)

Predicted Habitat Map Link: [http://www.basic.ncsu.edu/segap/datazip/maps/SE\\_Dist\\_bCOMO.pdf](http://www.basic.ncsu.edu/segap/datazip/maps/SE_Dist_bCOMO.pdf)

GAP Online Tool Link: <http://www.gapservice.ncsu.edu/segap/segap/index2.php?species=bCOMO>

Data Download: [http://www.basic.ncsu.edu/segap/datazip/region/vert/bCOMO\\_se00.zip](http://www.basic.ncsu.edu/segap/datazip/region/vert/bCOMO_se00.zip)

#### PROTECTION STATUS:

Reported on March 14, 2011

Federal Status: ---

State Status: AL (GB), CT (E), CT (E), ID (P), IL (LE), IN (SE), KY (T), MA (SC), MD (I), ME (T), MI (T), MN (SPC), NH (SC), NJ (SC), NV (YES), NY (PB - GS), OH (SC), RI (State Historical), RI (State Historical), TN (D), UT (None), VA (SC), WI (SC/M), WI (SC/M), BC (8 (2005)), QC (Non suivie)

NS Global Rank: G5

NS State Rank: AL (S3N,S4B), AR (S1B,S2N), AZ (S5), CA (SNR), CO (SNA), CT (S2B), CT (S2B), DC (S2N), DE (S3B), FL (SNR), GA (S5), HI (S2), IA (S2B,S2N), ID (SNA), IL (S3), IN (S3B), KS (S1B,S2N), KY (S1S2B), LA (S5), MA (S1B,S2N), MD (S2B), ME (S2?B), MI (S3), MN (S3B), MO (S2), MS (S5B,S5N), MT (SNA), NC (S3B,S2N), NH (S2B), NJ (S3N), NM (S4B,S4N), NV (S3), NY (S4), OH (S3), OK (S2B), OR (SNA), PA (S3B), RI (SHB), RI (SHB), SC (SNR), SD (SNA), SD (SNA), TN (S1B), TX (S4B), UT (S1?), VA (S1B,S1N), VT (S2B,S2N), WI (S2B), WI (S2B), WV (S1B), WY (SNA), BC (SNA), MB (SNA), NB (S2B), NF (SNA), NS (S1B), ON (S4B), PE (SNA), QC (S4B)

**SUMMARY OF PREDICTED HABITAT BY MANAGMENT AND GAP PROTECTION STATUS:**

	US FWS		US Forest Service		Tenn. Valley Author.		US DOD/ACOE	
	ha	%	ha	%	ha	%	ha	%
Status 1	63,069.7	1	3,607.7	< 1	0.0	0	0.0	0
Status 2	100,871.5	2	20,903.5	< 1	0.0	0	41.5	< 1
Status 3	663.5	< 1	167,047.8	3	0.0	0	52,539.0	< 1
Status 4	8.6	< 1	0.0	0	0.0	0	4.6	< 1
Total	164,613.2	3	191,559.1	3	0.0	0	52,585.1	< 1
	US Dept. of Energy		US Nat. Park Service		NOAA		Other Federal Lands	
	ha	%	ha	%	ha	%	ha	%
Status 1	0.0	0	189,067.6	3	9.7	< 1	6,154.6	< 1
Status 2	0.0	0	1,937.4	< 1	2,353.5	< 1	6.8	< 1
Status 3	1,868.6	< 1	231,172.2	4	0.0	0	614.6	< 1
Status 4	0.0	0	0.0	0	0.0	0	0.0	0
Total	1,868.6	< 1	422,177.2	7	2,363.2	< 1	6,776.0	< 1
	Native Am. Reserv.		State Park/Hist. Park		State WMA/Gameland		State Forest	
	ha	%	ha	%	ha	%	ha	%
Status 1	0.0	0	15.8	< 1	0.0	0	0.0	0
Status 2	0.0	0	115.0	< 1	472,179.2	8	0.0	0
Status 3	2.6	< 1	302,920.5	5	41,755.2	< 1	106,419.9	2
Status 4	0.0	0	< 0.1	< 1	3,256.8	< 1	3.9	< 1
Total	2.6	< 1	303,051.4	5	517,191.2	9	106,423.7	2
	State Coastal Reserve		ST Nat.Area/Preserve		Other State Lands		Private Cons. Easemt.	
	ha	%	ha	%	ha	%	ha	%
Status 1	0.0	0	478.1	< 1	0.0	0	0.0	0
Status 2	7,701.5	< 1	23,803.3	< 1	0.0	0	1,264.0	< 1
Status 3	0.0	0	13,367.4	< 1	3,367.9	< 1	58,459.0	1
Status 4	0.0	0	0.0	0	156.7	< 1	0.0	0
Total	7,701.5	< 1	37,648.8	< 1	3,524.6	< 1	59,722.9	1
	Private Land - No Res.		Water		Overall Total			
	ha	%	ha	%	ha	%		
Status 1	0.0	0	0.0	0	262,403.2 5			
Status 2	0.0	0	0.0	0	631,177.1 11			
Status 3	106.1	< 1	0.0	0	980,304.3 20			
Status 4	3,718,464.8	64	28,363.4	< 1	3,753,507.1 65			
Total	3,718,570.9	64	28,363.4	< 1	5,627,391.7 100			

GAP Status 1: An area having permanent protection from conversion of natural land cover and a mandated management plan in operation to maintain a natural state within which disturbance events (of natural type, frequency, and intensity) are allowed to proceed without interference or are mimicked through management.

GAP Status 2: An area having permanent protection from conversion of natural land cover and a mandated management plan in operation to maintain a primarily natural state, but which may receive use or management practices that degrade the quality of existing natural communities.

GAP Status 3: An area having permanent protection from conversion of natural land cover for the majority of the area, but subject to extractive uses of either a broad, low-intensity type or localized intense type. It also confers protection to federally listed endangered and threatened species throughout the area.

GAP Status 4: Lack of irrevocable easement or mandate to prevent conversion of natural habitat types to anthropogenic habitat types. Allows for intensive use throughout the tract. Also includes those tracts for which the existence of such restrictions or sufficient information to establish a higher status is unknown.

## PREDICTED HABITAT MODEL(S):

### Summer Model:

Habitat Description: Common Moorhens tend to breed in areas where the proportion of open, fresh water is approximately equal with emergent vegetation (Taylor 1998), in habitats such as freshwater ponds, backwaters (Potter et al. 1980), brackish impoundments, lakes (Fussell 1994), canals, and reservoirs (Harrison 1975). They also breed in mangroves (NATURESERVE). Quiet or slow moving bodies of water with emergent vegetation are used during breeding (Layne et al. 1977). Shallow fresh water with varying amounts of emergent vegetation are also used in urban areas (Stevenson and Anderson 1994). They are reported to avoid brackish or salty habitat.(Hamel 1992). Requires more vegetation than does American Coot (Kaufman 1996) and uses somewhat more open habitats than the Purple Gallinule (Hamel 1992).

The nest is anchored to vegetation over water, or occasionally in a shrub in or near the water (Harrison 1975).

Quoted directly from existing state habitat notes - K. Cook, 15Feb05

### Hydrography Mask:

Freshwater Only

Utilizes open water features with buffers of 120m from and 60m into selected water features.

Utilizes wet vegetation features with buffers of 120m from and unlimited into selected vegetation features.

### Selected Map Units:

Functional Group	Map Unit Name
Brackish Tidal Marsh & Wetland	Atlantic Coastal Plain Northern Tidal Wooded Swamp
Brackish Tidal Marsh & Wetland	Atlantic Coastal Plain Southern Tidal Wooded Swamp
Brackish Tidal Marsh & Wetland	East Gulf Coastal Plain Tidal Wooded Swamp
Brackish Tidal Marsh & Wetland	South Florida Everglades Sawgrass Marsh
Brackish Tidal Marsh & Wetland	South Florida Mangrove Swamp
Brackish Tidal Marsh & Wetland	Southwest Florida Perched Barriers Salt Swamp and Lagoon - Marsh Modifier
Coastal Dune & Freshwater Wetland	Atlantic and Gulf Coastal Plain Interdunal Wetland
Freshwater Tidal Marsh & Wetland	Atlantic Coastal Plain Central Fresh-Oligohaline Tidal Marsh
Freshwater Tidal Marsh & Wetland	Atlantic Coastal Plain Embayed Region Tidal Freshwater Marsh
Freshwater Tidal Marsh & Wetland	Atlantic Coastal Plain Northern Fresh and Oligohaline Tidal Marsh
Freshwater Tidal Marsh & Wetland	Florida Big Bend Fresh-Oligohaline Tidal Marsh
Water	Open Water (Fresh)
Wetlands	Atlantic Coastal Plain Blackwater Stream Floodplain Forest - Herbaceous Modifier
Wetlands	Atlantic Coastal Plain Clay-Based Carolina Bay Forested Wetland
Wetlands	Atlantic Coastal Plain Clay-Based Carolina Bay Herbaceous Wetland
Wetlands	Atlantic Coastal Plain Depression Pondshore
Wetlands	Atlantic Coastal Plain Large Natural Lakeshore
Wetlands	Atlantic Coastal Plain Nonriverine Swamp and Wet Hardwood Forest - Taxodium/Nyssa Modifier
Wetlands	Atlantic Coastal Plain Nonriverine Swamp and Wet Hardwood Forest - Oak Dominated Modifier
Wetlands	Atlantic Coastal Plain Northern Basin Peat Swamp
Wetlands	Atlantic Coastal Plain Northern Basin Swamp and Wet Hardwood Forest
Wetlands	Atlantic Coastal Plain Northern Pondshore
Wetlands	Atlantic Coastal Plain Peatland Pocosin
Wetlands	Atlantic Coastal Plain Streamhead Seepage Swamp, Pocosin, and Baygall
Wetlands	Central Florida Herbaceous Pondshore
Wetlands	East Gulf Coastal Plain Interior Shrub Bog
Wetlands	East Gulf Coastal Plain Large River Floodplain Forest - Herbaceous Modifier
Wetlands	East Gulf Coastal Plain Northern Depression Pondshore
Wetlands	East Gulf Coastal Plain Southern Depression Pondshore
Wetlands	Floridian Highlands Freshwater Marsh
Wetlands	Lower Mississippi River Bottomland and Floodplain Forest
Wetlands	Lower Mississippi River Bottomland Depressions - Herbaceous Modifier
Wetlands	Mississippi River Low Floodplain (Bottomland) Forest

Wetlands	Mississippi River Riparian Forest
Wetlands	South Florida Bayhead Swamp
Wetlands	South Florida Cypress Dome
Wetlands	South Florida Freshwater Slough and Gator Hole
Wetlands	South Florida Pond-Apple/Popash Slough
Wetlands	South Florida Willow Head
Wetlands	Southern Coastal Plain Blackwater River Floodplain Forest
Wetlands	Southern Coastal Plain Hydric Hammock
Wetlands	Southern Coastal Plain Nonriverine Basin Swamp
Wetlands	Southern Coastal Plain Nonriverine Cypress Dome
Wetlands	Southern Coastal Plain Seepage Swamp and Baygall
Wetlands	Southern Coastal Plain Spring-run Stream Aquatic Vegetation

## CITATIONS:

- American Ornithologists' Union (AOU), Committee on Classification and Nomenclature. 1983. Check-list of North American Birds. Sixth Edition. American Ornithologists' Union, Allen Press, Inc., Lawrence, Kansas.
- Bent, A. C. 1926. Life histories of North American marsh birds. U.S. National Museum Bulletin No. 135. [reprint. 1963. Dover Publications, Inc., New York, New York].
- Berger, A.J. 1981. Hawaiian Birdlife. Second Edition. University of Hawaii Press, Honolulu, Hawaii. xv + 260 pp.
- Byrd, G. V., and C. F. Zeilemaker. 1981. Ecology of nesting Hawaiian common gallinules at Hanalei, Hawaii. *W. Birds* 12:105-116.
- Eddleman, W. R., F. L. Knopf, B. Meanley, F. A. Reid, and R. Zembal. 1988. Conservation of North American rallids. *Wilson Bulletin* 100:458-475.
- Fussell, J.O. III. 1994. A birder's guide to coastal North Carolina. Chapel Hill and London: The University of North Carolina Press.
- Hamel, P. B. 1992. The land manager's guide to the birds of the south. The Nature Conservancy, Chapel Hill, North Carolina. 367 pp + several appendices.
- Harrison, C. 1978. A field guide to the nests, eggs and nestlings of North American birds. Collins, Cleveland, Ohio.
- Harrison, H.H. 1975. A field guide to bird's nests in the U.S. east of the Mississippi River. Houghton Mifflin Company, Boston, Massachusetts. 257 p.
- Harrison, H.H. 1979. A field guide to western birds' nests. Houghton Mifflin Company, Boston. 279 pp.
- Herkert, J. R., editor. 1992. Endangered and threatened species of Illinois:status and distribution. Vol. 2:Animals. Illinois Endangered Species Protection Board. iv + 142 pp.
- Kaufman K. 1996. Lives of North American Birds. Boston, New York: Houghton Mifflin Company.
- Layne, J.N.; Stallcup, J.A.; Woolfenden, G.E.; McCauley, M.N.; Worley, D.J. 1977. Fish and Wildlife Inventory of the Seven-County Region Included in the Central Florida Phosphate Industry Area-Wide Environmental Impact Study. Volumes I and II. Also avai
- National Geographic Society (NGS). 1983. Field guide to the birds of North America. National Geographic Society, Washington, D.C.
- Potter, E. F., J. F. Parnell, and R. P. Teulings. 1980. Birds of the Carolinas. Univ. North Carolina Press, Chapel Hill. 408 pp.
- Pratt, H.D., P.L. Bruner, and D.G. Berrett. 1987. A field guide to the birds of Hawaii and the tropical Pacific. Princeton University Press, Princeton, New Jersey. 409 pp. + 45 plates.
- Raffaele, H.A. 1983. A guide to the birds of Puerto Rico and the Virgin Islands. Fondo Educativo Interamericano, San Juan, Puerto Rico. 255 pp.
- Scott, J. M., and C. B. Kepler. 1985. Distribution and abundance of Hawaiian native birds:a status report. Pages 43-70 in Temple, S. A. (editor). Bird Conservation 2. University of Wisconsin Press, Madison, Wisconsin. 181 pp.
- Stevenson, H. M., and B. H. Anderson. 1994. The birdlife of Florida. University Press of Florida, Gainesville. 892 pp.
- Stiles, F.G., and A.F. Skutch. 1989. A guide to the birds of Costa Rica. Comstock Publ. Associates, Cornell University Press, Ithaca, New York. 511 pp.
- Stinson, D. W., M. W. Ritter, and J. D. Reichel. 1991. The Mariana common moorhen:decline of an island endemic. *Condor* 93:38-43.
- Taylor, B. 1998. Rails. A guide to the rails, crakes, gallinules, and coots of the world. New Haven and London: Yale University Press. 600p.
- Terres, J.K. 1980. The Audubon Society encyclopedia of North American birds. Alfred A. Knopf, New York.

For more information:: SE-GAP Analysis Project / BaSIC  
127 David Clark Labs  
Dept. of Biology, NCSU  
Raleigh, NC 27695-7617  
(919) 513-2853  
[www.basic.ncsu.edu/segap](http://www.basic.ncsu.edu/segap)

Compiled: 15 September 2011

This data was compiled and/or developed  
by the Southeast GAP Analysis Project at  
The Biodiversity and Spatial Information  
Center, North Carolina State University.