



SOUTHEAST GAP ANALYSIS PROJECT



Species Modeling Report

Common Goldeneye

Bucephala clangula

Taxa: Avian

Order: Anseriformes

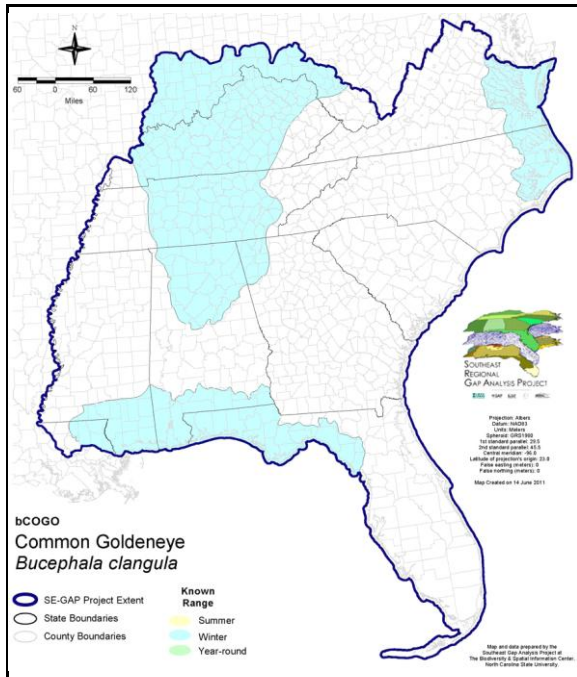
Family: Anatidae

SE-GAP Spp Code: **bCOGO**

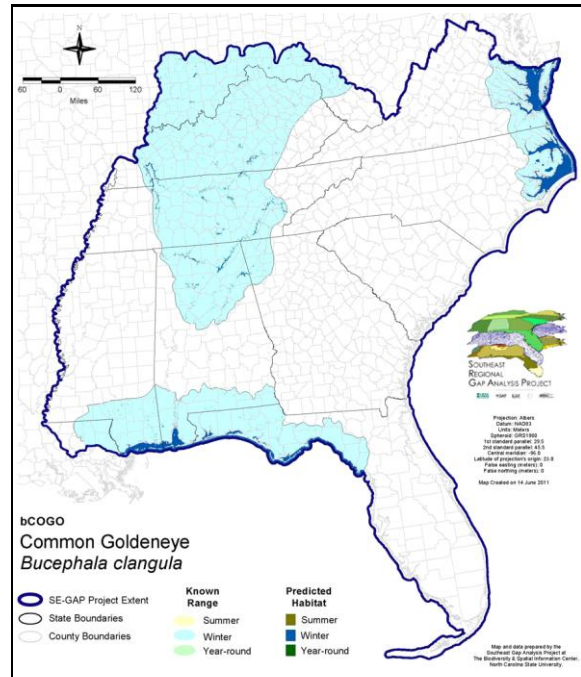
ITIS Species Code: 175141

NatureServe Element Code: ABNJB18010

KNOWN RANGE:



PREDICTED HABITAT:



Range Map Link: http://www.basic.ncsu.edu/segap/datazip/maps/SE_Range_bCOGO.pdf

Predicted Habitat Map Link: http://www.basic.ncsu.edu/segap/datazip/maps/SE_Dist_bCOGO.pdf

GAP Online Tool Link: <http://www.gapservice.ncsu.edu/segap/segap/index2.php?species=bCOGO>

Data Download: http://www.basic.ncsu.edu/segap/datazip/region/vert/bCOGO_se00.zip

PROTECTION STATUS:

Reported on March 14, 2011

Federal Status: ---

State Status: AL (GB), ID (G), KY (N), NV (YES), NY (PB - GS), RI (Not Listed), UT (None), WI (SC/M), WI (SC/M), BC (4 (2005)), QC (Non suivie)

NS Global Rank: G5

NS State Rank: AK (S5B,S4N), AL (S4N), AR (S3N), AZ (S5N), CA (SNRN), CO (S5N), CT (SNA), DE (S4N), FL (SNRN), GA (S4), IA (S4N), ID (S3B,S3N), IL (SNA), IN (S4N), KS (S3N), KY (S3N), LA (S3N), MA (S5N), MD (S5N), ME (S5B,S5N), MI (S3), MN (SNRB,SNRM), MO (SNRN), MS (S4N), MT (S5), NC (S3N), ND (S3), NE (SNRN), NH (S3B), NH (S3B), NJ (SNA), NM (S5N), NV (S4N), NY (S2), OH (SNRN), OR (S4), PA (S4N), RI (SNA), SC (SNRN), SD (SNA), TN (S4N), TX (S4N), UT (S3S4N), VA (SNRN), VT (S3B,S5N), WA (S5N), WA (S5N), WI (S2B), WI (S2B), WV (S3N), WY (S3B), WY (S3B), AB (S5), BC (S4S5B), LB (S5B), MB (S5B), MB (S5B), NB (S4B,S5M,S4N), NF (S5B), NS (S2B,S4N), NT (SNRB), NU (SNRB), ON (S5), ON (S5), PE (S4N), QC (S5B), SK (S5B,S3M,S3N), YT (S5B)

SUMMARY OF PREDICTED HABITAT BY MANAGMENT AND GAP PROTECTION STATUS:

	US FWS		US Forest Service		Tenn. Valley Author.		US DOD/ACOE	
	ha	%	ha	%	ha	%	ha	%
Status 1	36.4	3	0.0	0	0.0	0	0.0	0
Status 2	52.5	5	0.0	0	0.0	0	0.0	0
Status 3	1.1	< 1	0.0	0	0.0	0	21.4	2
Status 4	0.0	0	0.0	0	0.0	0	0.0	0
Total	89.9	8	0.0	0	0.0	0	21.4	2
	US Dept. of Energy		US Nat. Park Service		NOAA		Other Federal Lands	
	ha	%	ha	%	ha	%	ha	%
Status 1	0.0	0	0.0	0	0.0	0	0.0	0
Status 2	0.0	0	5.1	< 1	0.0	0	0.0	0
Status 3	0.0	0	0.0	0	0.0	0	0.0	0
Status 4	0.0	0	0.0	0	0.0	0	0.0	0
Total	0.0	0	5.1	< 1	0.0	0	0.0	0
	Native Am. Reserv.		State Park/Hist. Park		State WMA/Gameland		State Forest	
	ha	%	ha	%	ha	%	ha	%
Status 1	0.0	0	0.0	0	0.0	0	0.0	0
Status 2	0.0	0	0.0	0	12.8	1	0.0	0
Status 3	0.0	0	1.3	< 1	17.9	2	0.0	0
Status 4	0.0	0	0.0	0	0.0	0	0.0	0
Total	0.0	0	1.3	< 1	30.7	3	0.0	0
	State Coastal Reserve		ST Nat.Area/Preserve		Other State Lands		Private Cons. Easemt.	
	ha	%	ha	%	ha	%	ha	%
Status 1	0.0	0	0.0	0	0.0	0	0.0	0
Status 2	49.3	5	0.0	0	0.0	0	0.0	0
Status 3	0.0	0	0.0	0	0.0	0	0.0	0
Status 4	0.0	0	0.0	0	0.0	0	0.0	0
Total	49.3	5	0.0	0	0.0	0	0.0	0
	Private Land - No Res.		Water		Overall Total			
	ha	%	ha	%	ha	%	ha	%
Status 1	0.0	0	0.0	0	36.4	3		
Status 2	0.0	0	0.0	0	119.7	11		
Status 3	0.0	0	0.0	0	41.7	4		
Status 4	727.8	68	146.2	14	874.0	82		
Total	727.8	68	146.2	14	1,071.7	100		

GAP Status 1: An area having permanent protection from conversion of natural land cover and a mandated management plan in operation to maintain a natural state within which disturbance events (of natural type, frequency, and intensity) are allowed to proceed without interference or are mimicked through management.

GAP Status 2: An area having permanent protection from conversion of natural land cover and a mandated management plan in operation to maintain a primarily natural state, but which may receive use or management practices that degrade the quality of existing natural communities.

GAP Status 3: An area having permanent protection from conversion of natural land cover for the majority of the area, but subject to extractive uses of either a broad, low-intensity type or localized intense type. It also confers protection to federally listed endangered and threatened species throughout the area.

GAP Status 4: Lack of irrevocable easement or mandate to prevent conversion of natural habitat types to anthropogenic habitat types. Allows for intensive use throughout the tract. Also includes those tracts for which the existence of such restrictions or sufficient information to establish a higher status is unknown.

PREDICTED HABITAT MODEL(S):

Winter Model:

Habitat Description: Throughout the winter months, common goldeneyes are found primarily in marine coastal bays, estuaries and harbors and are also found inland on larger open lakes and rivers (Eadie et al. 1995). Amy Silvano 05sept05

Ecosystem Classifiers: Primarily aquatic feeding on mollusks and crustaceans. Open water, and large bodied lakes and rivers. Amy Silvano 05sept05

Hydrography Mask:

Utilizes flowing water features with buffer of unlimited into selected water features.

Utilizes open water features with buffer of unlimited into selected water features.

Contiguous Patch Minimum Size (hectares): 10

Selected Map Units:

Functional Group	Map Unit Name
Water	Open Water (Brackish/Salt)
Water	Open Water (Fresh)

CITATIONS: American Ornithologists' Union (AOU), Committee on Classification and Nomenclature. 1983. Check-list of North American Birds. Sixth Edition. American Ornithologists' Union, Allen Press, Inc., Lawrence, Kansas.

Bellrose, F.C. 1976. Ducks, geese and swans of North America. Stackpole Books, Harrisburg, Pa.

Desgranges, J.-L. and M. Dureau. 1985. Effect of lake acidity and morphometry on the distribution of aquatic birds in southern Quebec. Holarct. Ecol. 8: 181-190.

Eadie, J.M., M.L. Mallory, and H.G. Lumsden. 1995. Common Goldeneye (*Bucephala clangula*). In *The Birds of North America*, No. 170 (A. Poole and F. Gill, eds.). The Academy of Natural Sciences, Philadelphia, PA, and The American Ornithologists' Union, W

Harrison, C. 1978. A field guide to the nests, eggs and nestlings of North American birds. Collins, Cleveland, Ohio.

Johnson, S.R., and D.R. Herter. 1989. The birds of the Beaufort Sea. BP Exploration (Alaska) Inc., Anchorage, Alaska. 372 pp.

Mcnicol, D. K., B. E. Bendell and R. K. Ross. 1987a. Studies of the effects of acidification on aquatic wildlife in Canada: waterfowl and trophic relationships in small lakes in northern Ontario. Can. Wildl. Serv. Occ. Pap. 62.

Root, T. 1988. Atlas of wintering North American birds: An analysis of Christmas Bird Count data. University of Chicago Press. 336 pp.

Terres, J.K. 1980. The Audubon Society encyclopedia of North American birds. Alfred A. Knopf, New York.

Tobish, T. 1987. Separation of Barrow's and common goldeneyes in all plumages. *Birding* 18(1):17-27.

For more information:: SE-GAP Analysis Project / BaSIC
127 David Clark Labs
Dept. of Biology, NCSU
Raleigh, NC 27695-7617
(919) 513-2853
www.basic.ncsu.edu/segap

Compiled: 15 September 2011

This data was compiled and/or developed by the Southeast GAP Analysis Project at The Biodiversity and Spatial Information Center, North Carolina State University.