



SOUTHEAST GAP ANALYSIS PROJECT



Species Modeling Report

Clapper Rail

Rallus longirostris

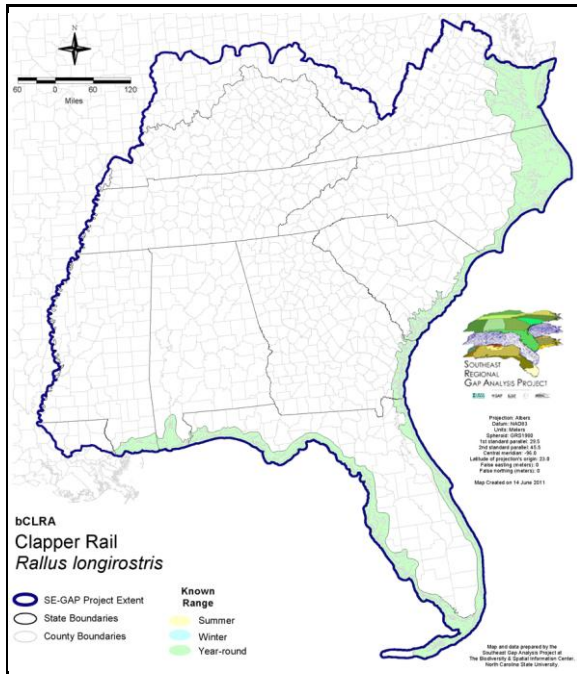
Taxa: Avian
 Order: Gruiformes
 Family: Rallidae

SE-GAP Spp Code: **bCLRA**

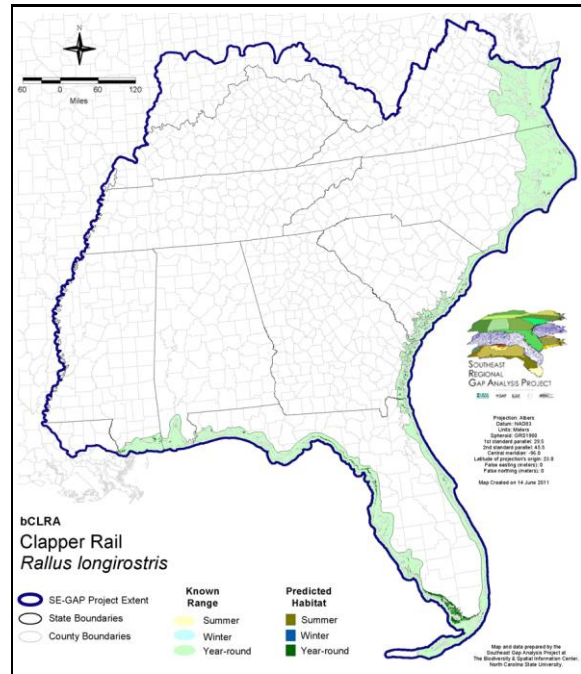
ITIS Species Code: 176209

NatureServe Element Code: ABNME05010

KNOWN RANGE:



PREDICTED HABITAT:



Range Map Link: http://www.basic.ncsu.edu/segap/datazip/maps/SE_Range_bCLRA.pdf

Predicted Habitat Map Link: http://www.basic.ncsu.edu/segap/datazip/maps/SE_Dist_bCLRA.pdf

GAP Online Tool Link: <http://www.gapservice.ncsu.edu/segap/segap/index2.php?species=bCLRA>

Data Download: http://www.basic.ncsu.edu/segap/datazip/region/vert/bCLRA_se00.zip

PROTECTION STATUS:

Reported on March 14, 2011

Federal Status: ---

State Status: AL (GB), NY (PB), RI (Concern), QC (Non suivie)

NS Global Rank: G5

NS State Rank: AL (S4), AZ (S3), CA (S1), CT (S3B), CT (S3B), DC (SNA), DE (S5), FL (SNR), GA (S5), IL (SNA), LA (S5), MA (S2B,S2N), MA (S2B,S2N), MD (S3S4B,S3N), ME (S1?N), MS (S4), NC (S4), NE (SNA), NH (SNA), NJ (S5), NM (SNR), NV (S1), NY (S3), PA (SNA), RI (S1B,S2N), SC (SNR), TX (S4B), VA (S5), WV (SNA), NB (SNA), NF (SNA), NS (SNA), QC (SNA)

SUMMARY OF PREDICTED HABITAT BY MANAGMENT AND GAP PROTECTION STATUS:

	US FWS		US Forest Service		Tenn. Valley Author.		US DOD/ACOE	
	ha	%	ha	%	ha	%	ha	%
Status 1	52,140.1	7	0.0	0	0.0	0	0.0	0
Status 2	22,871.7	3	64.6	< 1	0.0	0	0.0	0
Status 3	681.8	< 1	475.1	< 1	0.0	0	13,554.5	2
Status 4	0.0	0	0.0	0	0.0	0	4.2	< 1
Total	75,693.6	10	539.7	< 1	0.0	0	13,558.7	2
	US Dept. of Energy		US Nat. Park Service		NOAA		Other Federal Lands	
	ha	%	ha	%	ha	%	ha	%
Status 1	0.0	0	149,419.5	19	825.5	< 1	3,555.5	< 1
Status 2	0.0	0	20,174.9	3	31,810.2	4	25.0	< 1
Status 3	0.0	0	4,882.2	< 1	0.0	0	0.0	0
Status 4	0.0	0	1.0	0	0.0	0	0.0	0
Total	0.0	0	174,478.5	22	32,635.7	4	3,580.5	< 1
	Native Am. Reserv.		State Park/Hist. Park		State WMA/Gameland		State Forest	
	ha	%	ha	%	ha	%	ha	%
Status 1	0.0	0	23.0	< 1	0.0	0	0.0	0
Status 2	0.0	0	55.6	< 1	37,282.2	5	0.0	0
Status 3	0.0	0	43,805.6	6	3,910.5	< 1	1,147.5	< 1
Status 4	0.0	0	0.0	0	447.6	< 1	0.0	0
Total	0.0	0	43,884.3	6	41,640.3	5	1,147.5	< 1
	State Coastal Reserve		ST Nat.Area/Preserve		Other State Lands		Private Cons. Easemt.	
	ha	%	ha	%	ha	%	ha	%
Status 1	0.0	0	342.8	< 1	0.0	0	0.0	0
Status 2	21,230.1	3	15,641.1	2	0.0	0	0.0	0
Status 3	0.0	0	619.0	< 1	0.0	0	379.3	< 1
Status 4	0.0	0	0.0	0	0.0	0	0.0	0
Total	21,230.1	3	16,602.9	2	0.0	0	379.3	< 1
	Private Land - No Res.		Water		Overall Total			
	ha	%	ha	%	ha	%	ha	%
Status 1	0.0	2	0.0	0	206,306.6 26			
Status 2	0.8	< 1	0.0	< 1	149,156.5 19			
Status 3	95.9	< 1	< 0.1	< 1	69,551.6 9			
Status 4	344,069.8	44	14,765.9	2	359,736.9 46			
Total	344,166.8	44	14,766.1	2	784,751.5 100			

GAP Status 1: An area having permanent protection from conversion of natural land cover and a mandated management plan in operation to maintain a natural state within which disturbance events (of natural type, frequency, and intensity) are allowed to proceed without interference or are mimicked through management.

GAP Status 2: An area having permanent protection from conversion of natural land cover and a mandated management plan in operation to maintain a primarily natural state, but which may receive use or management practices that degrade the quality of existing natural communities.

GAP Status 3: An area having permanent protection from conversion of natural land cover for the majority of the area, but subject to extractive uses of either a broad, low-intensity type or localized intense type. It also confers protection to federally listed endangered and threatened species throughout the area.

GAP Status 4: Lack of irrevocable easement or mandate to prevent conversion of natural habitat types to anthropogenic habitat types. Allows for intensive use throughout the tract. Also includes those tracts for which the existence of such restrictions or sufficient information to establish a higher status is unknown.

PREDICTED HABITAT MODEL(S):

Year-round Model:

Habitat Description: Clapper rails use salt and brackish marshes, mangrove swamps and scrub, and freshwater marshes where associated with dense vegetation (Hammel 1992, Layne et al. 1977) and/or abundant crayfish (AOU 1983). They can also be found on natural beaches and mudflats (Robertson and Kushlan 1984). Home ranges are relatively small (.04-.81 ha) (Zemba et al. 1989) and consist of *Juncus roemerianus* and *Spartina alterniflora* marshes and mangrove swamps. They forage along edges of mangroves and tidal creeks and nest in *Juncus* or *Spartina* (Kale 1978).

The nest site is located in a drier, slightly elevated area of the marsh not flooded by the tide (Harrison 1975), in growing or dead herbage or under a small bush, or in places raised above the ground in a grass tuft or clump of rushes (Harrison 1978). Nests can also be attached to a plant over shallow water or among mangrove roots (Potter et al. 1980). Nests on the highest, driest place in the marsh (Terres 1980).

Quoted directly from existing state habitat notes - K. Cook, 15Feb05

Hydrography Mask:

Brackish/Saltwater Only

Utilizes open water features with buffers of 250m from and 30m into selected water features.

Utilizes wet vegetation features with buffers of 30m from and unlimited into selected vegetation features.

Selected Map Units:

Functional Group	Map Unit Name
Brackish Tidal Marsh & Wetland	Atlantic Coastal Plain Central Salt and Brackish Tidal Marsh
Brackish Tidal Marsh & Wetland	Atlantic Coastal Plain Embayed Region Tidal Salt and Brackish Marsh
Brackish Tidal Marsh & Wetland	Atlantic Coastal Plain Indian River Lagoon Tidal Marsh
Brackish Tidal Marsh & Wetland	Atlantic Coastal Plain Northern Sea-Level Fen
Brackish Tidal Marsh & Wetland	Atlantic Coastal Plain Northern Tidal Salt Marsh
Brackish Tidal Marsh & Wetland	Atlantic Coastal Plain Northern Tidal Wooded Swamp
Brackish Tidal Marsh & Wetland	Atlantic Coastal Plain Southern Tidal Wooded Swamp
Brackish Tidal Marsh & Wetland	East Gulf Coastal Plain Tidal Wooded Swamp
Brackish Tidal Marsh & Wetland	Florida Big Bend Salt-Brackish Tidal Marsh
Brackish Tidal Marsh & Wetland	Mississippi Sound Salt and Brackish Tidal Marsh
Brackish Tidal Marsh & Wetland	South Florida Everglades Sawgrass Marsh
Brackish Tidal Marsh & Wetland	South Florida Mangrove Swamp
Brackish Tidal Marsh & Wetland	Southwest Florida Perched Barriers Salt Swamp and Lagoon - Mangrove Modifier
Brackish Tidal Marsh & Wetland	Southwest Florida Perched Barriers Salt Swamp and Lagoon - Marsh Modifier
Water	Open Water (Brackish/Salt)
Wetlands	Atlantic Coastal Plain Clay-Based Carolina Bay Forested Wetland
Wetlands	South Florida Bayhead Swamp
Wetlands	South Florida Willow Head

CITATIONS: American Ornithologists' Union (AOU), Committee on Classification and Nomenclature. 1983. Check-list of North American Birds. Sixth Edition. American Ornithologists' Union, Allen Press, Inc., Lawrence, Kansas.

Anderson, B. W., and R. D. Ohmart. 1985. Habitat use by clapper rails in the lower Colorado River valley. *Condor* 87:116-126.

Avise, J.C., and R.M. Zink. 1988. Molecular genetic divergence between avian sibling species: king and clapper rails, long-billed and short-billed dowitchers, boat-tailed and great-tailed grackles, and tufted and black-crested titmice. *Auk* 105:516-528.

Bent, A. C. 1926. Life histories of North American marsh birds. U.S. National Museum Bulletin No. 135. [reprint. 1963. Dover Publications, Inc., New York, New York].

Crawford, R. L., S. L. Olson, and W. K. Taylor. 1983. Winter distribution of subspecies of clapper rails (*RALLUS LONGIROSTRIS*) in Florida with evidence for long-distance and overland movements. *Auk* 100:198-200.

Eddleman, W. R., F. L. Knopf, B. Meanley, F. A. Reid, and R. Zemba. 1988. Conservation of North American rallids. *Wilson Bulletin* 100:458-475.

Fussell, J. III and M. Lyons. 1990. Birds of the Outer Banks [pamphlet]. Eastern National Parks and Monument Association Coastal Wildlife Refuge Society.

- Fussell, J.O. III. 1994. A birder's guide to coastal North Carolina. Chapel Hill and London: The University of North Carolina Press.
- Hamel, P. B. 1992. The land manager's guide to the birds of the south. The Nature Conservancy, Chapel Hill, North Carolina. 367 pp + several appendices.
- Harrison, C. 1978. A field guide to the nests, eggs and nestlings of North American birds. Collins, Cleveland, Ohio.
- Harrison, H.H. 1975. A field guide to bird's nests in the U.S. east of the Mississippi River. Houghton Mifflin Company, Boston, Massachusetts. 257 p.
- Harrison, H.H. 1979. A field guide to western birds' nests. Houghton Mifflin Company, Boston. 279 pp.
- Layne, J.N.; Stallcup, J.A.; Woolfenden, G.E.; McCauley, M.N.; Worley, D.J. 1977. Fish and Wildlife Inventory of the Seven-County Region Included in the Central Florida Phosphate Industry Area-Wide Environmental Impact Study. Volumes I and II. Also avai
- Manser, P. 1990. The clapper rail (*RALLUS LONGIROSTRIS*). *Gosse Bird Club Broadsheet* 55:9-10.
- Meanley, B. 1985. The marsh hen:a natural history of the clapper rail of the Atlantic coast salt marsh. Tidewater Publishers, Centreville, MD. 123 pp.
- Potter, E. F., J. F. Parnell, and R. P. Teulings. 1980. *Birds of the Carolinas*. Univ. North Carolina Press, Chapel Hill. 408 pp.
- Raffaele, H.A. 1983. A guide to the birds of Puerto Rico and the Virgin Islands. Fondo Educativo Interamericano, San Juan, Puerto Rico. 255 pp.
- Ripley, S.D. 1977. *Rails of the world*. M.F. Fehely Publishers, Ltd., Toronto. 406 pp.
- Taylor, B. 1998. *Rails. A guide to the rails, crakes, gallinules, and coots of the world*. New Haven and London: Yale University Press. 600p.
- Terres, J.K. 1980. *The Audubon Society encyclopedia of North American birds*. Alfred A. Knopf, New York.
- Zemal, R., and J. M. Fancher. 1988. Foraging behavior and foods of the light-footed clapper rail. *Condor* 90:959-962.
- Zemal, R., B. M. Massey, and J. M. Fancher. 1989. Movements and activity patterns of the light-footed clapper rail. *J. Wildlife Management* 53:39-42.

For more information:: SE-GAP Analysis Project / BaSIC
127 David Clark Labs
Dept. of Biology, NCSU
Raleigh, NC 27695-7617
(919) 513-2853
www.basic.ncsu.edu/segap

Compiled: 15 September 2011

This data was compiled and/or developed
by the Southeast GAP Analysis Project at
The Biodiversity and Spatial Information
Center, North Carolina State University.